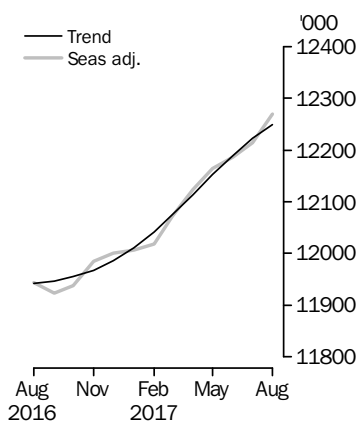


LABOUR FORCE

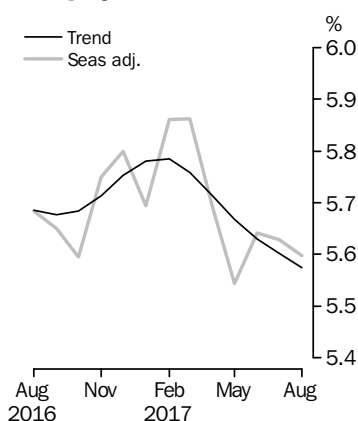
AUSTRALIA

EMBARGO: 11.30AM (CANBERRA TIME) THURS 14 SEP 2017

Employed Persons



Unemployment Rate



INQUIRIES

For further information about these and related statistics, email <client.services@abs.gov.au> or contact the National Information and Referral Service on 1300 135 070.

KEY FIGURES

	Jul 2017	Aug 2017	Jul 17 to Aug 17	Aug 16 to Aug 17
Trend				
Employed persons ('000)	12 222.4	12 249.5	27.1	2.6 %
Unemployed persons ('000)	725.3	723.2	-2.2	0.5 %
Unemployment rate (%)	5.6	5.6	0.0 pts	-0.1 pts
Participation rate (%)	65.1	65.2	0.1 pts	0.5 pts
Seasonally Adjusted				
Employed persons ('000)	12 214.7	12 269.0	54.2	2.7 %
Unemployed persons ('000)	728.5	727.5	-1.1	1.1 %
Unemployment rate (%)	5.6	5.6	0.0 pts	-0.1 pts
Participation rate (%)	65.1	65.3	0.2 pts	0.6 pts

KEY POINTS

TREND ESTIMATES (MONTHLY CHANGE)

- Employment increased 27,100 to 12,249,500.
- Unemployment decreased 2,200 to 723,200.
- Unemployment rate remained steady at 5.6%.
- Participation rate increased by 0.1 pts to 65.2%.
- Monthly hours worked in all jobs increased 3.9 million hours (0.2%) to 1,708.6 million hours.

SEASONALLY ADJUSTED ESTIMATES (MONTHLY CHANGE)

- Employment increased 54,200 to 12,269,000. Full-time employment increased 40,100 to 8,392,300 and part-time employment increased 14,100 to 3,876,700.
- Unemployment decreased 1,100 to 727,500. The number of unemployed persons looking for full-time work increased 6,400 to 501,600 and the number of unemployed persons only looking for part-time work decreased 7,500 to 225,900.
- Unemployment rate remained steady at 5.6%
- Participation rate increased by 0.2 pts to 65.3%.
- Monthly hours worked in all jobs increased 6.1 million hours (0.4%) to 1,705.4 million hours.

LABOUR UNDERUTILISATION (QUARTERLY CHANGE)

- Trend estimates: the labour force underemployment rate remained steady at 8.7%. The underutilisation rate decreased by 0.1 pts to 14.2%.
- Seasonally adjusted estimates: the labour force underemployment rate decreased 0.2 pts to 8.6%. The underutilisation rate decreased by 0.2 pts to 14.1%.

NOTES

FORTHCOMING ISSUES

ISSUE	RELEASE DATE
September 2017	19 October 2017
October 2017	16 November 2017
November 2017	14 December 2017
December 2017	18 January 2018
January 2018	15 February 2018
February 2018	22 March 2018

ANNUAL BENCHMARKING OF MONTHLY HOURS WORKED

Each year the monthly hours worked in all jobs series is benchmarked to a new annual hours worked estimate. This year the annual benchmarking also incorporated some minor process improvements in the calculation of annual benchmarks across the entire time series, which have resulted in some minor revisions throughout the series.

No changes have been made to the methodology used to produce these estimates. For more details on the methodology, refer to the *Information Paper: Expansion of Hours Worked Estimates from the Labour Force Survey, 2009* (cat. no. 6290.0.55.001).

ROUNDING

Estimates of changes shown on the front cover and used in the commentary have been calculated using unrounded estimates, and may be different from, but are more accurate than, movement obtained from the rounded estimates. The graphs on the front cover also depict unrounded estimates.

SAMPLING ERROR

The estimates in this publication are based on a sample survey. Published estimates and movements are subject to sampling variability. Standard errors give a measure of sampling variability. The interval bounded by two standard errors is the 95% confidence interval, which provides a way of looking at the variability inherent in estimates. There is a 95% chance that the true value of the estimate lies within that interval.

MOVEMENTS IN SEASONALLY ADJUSTED SERIES BETWEEN JULY 2017 AND AUGUST 2017

	<u>Monthly change</u>	<u>95% Confidence interval</u>	
Total Employment	54 200	-5 000	to 113 400
Total Unemployment	-1 100	-38 100	to 35 900
Unemployment rate	0.0 pts	-0.4 pts	to 0.4 pts
Participation rate	0.2 pts	-0.2 pts	to 0.6 pts

David W. Kalisch
Australian Statistician

LABOUR FORCE COMMENTARY AUGUST 2017

NATIONAL ESTIMATES

TREND ESTIMATES

Australia's trend estimate of employment increased by 27,100 persons in August 2017, with:

- the number of unemployed persons decreasing by 2,200 persons;
- the unemployment rate remaining steady at 5.6 per cent;
- the participation rate increasing by 0.1 percentage points to 65.2 per cent; and
- the employment to population ratio increasing by 0.1 percentage points to 61.5 per cent.

Over the past year, trend employment increased by 307,300 persons (or 2.6 per cent). Over the same 12 month period the trend employment to population ratio, which is a measure of how employed the population (aged 15 years and over) is, increased by 0.6 percentage points to 61.5 per cent, the highest it has been since February 2013.

In monthly terms, trend employment increased by 27,100 persons between July 2017 and August 2017. This represents an increase of 0.22 per cent, which is above the monthly average growth rate over the past 20 years of 0.16 per cent.

Trend full-time employment increased by 21,500 persons in August, while part-time employment also increased by 5,600 persons. Compared to a year ago, there are 253,300 more persons employed full-time and 54,000 more persons employed part time. The part-time share of employment decreased 0.4 percentage points over the last 6 months, from 31.9 per cent to 31.5 per cent.

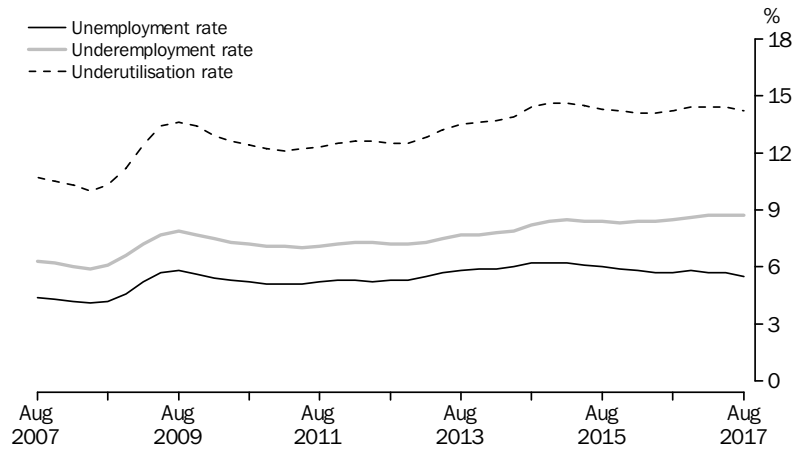
The trend estimate of monthly hours worked in all jobs increased by 3.9 million hours (or 0.23 per cent) in August 2017, to 1,708.6 million hours. Monthly hours worked have increased by 2.7 per cent over the past year, slightly above the estimate of employed persons. As a result, the average hours worked per employed person has also increased.

The trend unemployment rate remained at 5.6 per cent for the third consecutive month in August 2017, while the number of unemployed persons decreased by 2,200.

The quarterly trend underemployment rate remained steady at 8.7 per cent over the quarter to August 2017. Over the past year this rate increased by 0.2 percentage points, with the number of underemployed increasing by 52,200 persons. The quarterly underutilisation rate, which is a combined measure of unemployment and underemployment in the labour force, was 14.2 per cent in August 2017, down from 14.4 per cent in May 2017.

TREND ESTIMATES
continued

GRAPH 1, UNEMPLOYMENT, UNDEREMPLOYMENT AND UNDERUTILISATION RATES, August 2007 to August 2017



The trend participation rate increased by 0.1 percentage points to 65.2 per cent in August 2017, the highest it has been since April 2012.

The labour force includes the total number of employed and unemployed persons. Over the past year, the labour force has increased by 310,600 persons (2.5 per cent). This rate of increase is above the rate of increase for the total Civilian Population aged 15 years and over (325,500 persons, or 1.7 per cent).

The trend participation rate for 15-64 year olds, which controls (in part) for the effects of an ageing population, increased by 0.1 percentage points to 77.5 per cent in August 2017.

The trend participation rate for 15-24 year olds increased by 0.2 percentage points to 67.3 per cent in August 2017. The unemployment rate for this group decreased by 0.1 percentage points to 12.8 per cent in August 2017 and decreased by 0.2 percentage points over the year.

The trend series smooths the more volatile seasonally adjusted estimates and provide the best measure of the underlying behaviour of the labour market.

SEASONALLY ADJUSTED
ESTIMATES

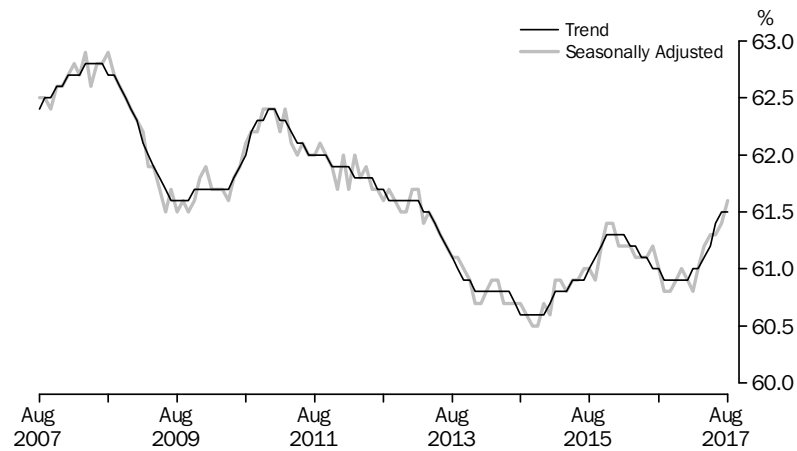
Seasonally adjusted employment increased by 54,200 persons from July to August 2017. Changes in the underlying composition of employment reflected an increase of 40,100 persons in full-time employment and a 14,100 increase in part-time employment. Since August 2016, full-time employment has increased by 251,200 persons, while part-time employment has increased by 74,500 persons.

Seasonally adjusted monthly hours worked in all jobs increased by 6.1 million hours in August 2017 to 1,705.4 million hours.

The seasonally adjusted employment to population ratio increased 0.2 per cent to 61.6 per cent in August 2017, representing an increase of 0.6 percentage points from the same time last year.

SEASONALLY ADJUSTED
ESTIMATES *continued*

GRAPH 2, EMPLOYMENT TO POPULATION RATIO, PERSONS, August 2007 to August 2017



The seasonally adjusted unemployment rate remained steady at 5.6 per cent in August 2017. The labour force participation rate increased by 0.2 percentage points to 65.3 per cent.

The quarterly seasonally adjusted underemployment rate decreased by 0.2 percentage points to 8.6 per cent. The quarterly underutilisation rate decreased by 0.2 percentage points to 14.1 per cent.

STATE AND TERRITORY
ESTIMATES
TREND ESTIMATES

In August 2017, increases in trend employment were observed in all states and territories except the Northern Territory where employment decreased by 1,300 persons. The largest increases were in Queensland (up 10,600 persons) and New South Wales (up 8,000 persons).

Similarly, over the past year, increases in employment were also observed in all states and territories except Northern Territory (down 2,300 persons). The largest increases were in Victoria (up 96,800 persons), Queensland (up 87,200 persons) and New South Wales (up 62,800 persons). The highest annual employment growth rates were in Tasmania (4.0 per cent), Queensland (3.7 per cent), Victoria (3.2 per cent) and Western Australia (2.6 per cent).

Increases in the trend unemployment rate were seen in the Northern Territory (up 0.2 percentage points) and the Australian Capital Territory (up 0.1 percentage points). The largest decreases were recorded in South Australia (down 0.2 percentage points) and Queensland (down 0.1 percentage points).

The quarterly trend underemployment rate recorded the largest increases in Tasmania (up 0.3 percentage points) and the Australian Capital Territory (up 0.2 percentage points). New South Wales and the Northern Territory recorded the largest decrease (both down 0.2 percentage points).

The trend participation rate increased in all states and territories except the Northern Territory (down 0.6 percentage points) and South Australia (down less than 0.1 percentage points). The largest increase was in Queensland (up 0.2 percentage points), followed by New South Wales, Western Australia, Tasmania and the Australian Capital Territory, which all recorded increases of 0.1 percentage points.

SEASONALLY ADJUSTED
ESTIMATES

In seasonally adjusted terms, the largest increase in employment was in Victoria (up 18,600 persons), followed by Queensland (up 16,700 persons) and New South Wales (up 12,900 persons).

The largest increase in the seasonally adjusted unemployment rate was in Western Australia (up 0.5 percentage points). Queensland and South Australia recorded the largest decrease in the seasonally adjusted unemployment rate (both down 0.5 percentage points), followed by Tasmania (down 0.3 percentage points).

The quarterly seasonally adjusted underemployment rate recorded the largest decreases in Western Australia (down 0.7 percentage points) and New South Wales (down 0.5 percentage points). The Tasmania underemployment rate increased by 1.7 percentage points, which followed a 1 percentage point decrease in the previous quarter.

The largest increase in the seasonally adjusted participation rate occurred in Victoria and Western Australia (both up 0.3 percentage points), while the largest decrease in the seasonally adjusted participation rate was observed in South Australia (down 0.2 percentage points).

Seasonally adjusted estimates are not published for the two territories.

TABLE 1, UNEMPLOYMENT RATE, STATES AND TERRITORIES

	TREND		SEASONALLY ADJUSTED	
	July	August	July	August
	%	%	%	%
New South Wales	4.9	4.9	5.0	5.0
Victoria	6.1	6.1	6.1	6.1
Queensland	6.1	6.0	6.2	5.7
South Australia	6.3	6.1	6.2	5.7
Western Australia	5.6	5.5	5.4	5.9
Tasmania	6.0	6.1	6.3	6.0
Northern Territory	3.5	3.6	np	np
Australian Capital Territory	4.6	4.7	np	np
Australia	5.6	5.6	5.6	5.6

np not available for publication but included in totals where applicable, unless otherwise indicated

INSIGHTS FROM THE ORIGINAL DATA

SAMPLE COMPOSITION

The Labour Force Survey sample can be thought of as comprising eight sub-samples (or rotation groups), with each sub-sample remaining in the survey for eight months, and one rotation group "rotating out" each month and being replaced by a new group "rotating in". This sample rotation is important in ensuring that seven-eighths of the sample are common from one month to the next, to ensure that changes in the estimates reflect real changes in the labour market, rather than the sample. In addition, the replacement sample is generally selected from the same geographic areas as the outgoing one, as part of a representative sampling approach.

When considering movements in the original estimates, it is possible to decompose the sample into three components:

- the matched common sample (survey respondents who responded in both July and August);
- the unmatched common sample (survey respondents who responded in August but who did not respond in July, or vice versa); and
- the incoming rotation group (survey respondents who replaced respondents who rotated out in July).

The detailed decomposition of each of these movements is included in the data cube 'Insights From the Original Data'.

In considering the three components of the sample, it is important to remember that the matched common sample describes the change observed for the same respondents in July and August, while the other two components reflect differences between the aggregate labour force status of different groups of people.

While the rotation groups are designed to be representative of the population, the outgoing and incoming rotation groups will almost always have somewhat different characteristics, as a result of the groups representing a sample of different households and people. The design of the survey, including the weighting and estimation processes, ensures that these differences are generally relatively minor and seeks to ensure that differences in characteristics of rotation groups do not affect the representativeness of the survey and its estimates. Monthly estimates are always designed to be representative of their respective months, regardless of the relative contribution of the three components of the sample.

INCOMING ROTATION GROUP

In original terms, the incoming rotation group in August 2017 had a lower employment to population ratio than the group it replaced (61.4 per cent in July, down to 60.5 per cent in August 2017), and was lower than the ratio for the entire sample (61.2 per cent).

The full-time employment to population ratio of the incoming rotation group was lower than the group it replaced (42.5 per cent in July 2017, down to 40.6 per cent in August 2017), and lower than the ratio for the entire sample (41.8 per cent).

The unemployment rate of the incoming rotation group was 1.3 percentage points higher than the whole sample (6.8 per cent, compared to 5.5 per cent), and it replaced a group with a lower rate (5.2 per cent in July). Its participation rate was above that of the sample as a whole (65.0 per cent, compared to 64.8 per cent), and the group it replaced (64.8 per cent in July).

OUTGOING ROTATION GROUP

In looking ahead to the September 2017 estimates, the outgoing rotation group in August 2017, which will be replaced by a new incoming rotation group in September 2017, had a higher employment to population ratio (61.7 per cent in August 2017) compared to the sample as a whole (61.2 per cent). The full-time employment to population ratio (41.6 per cent) was lower than the ratio for the entire sample (41.8 per cent).

In original terms, the unemployment rate for the outgoing rotation group in August 2017 was 5.4 per cent which was lower than the whole sample at 5.5 per cent. The participation rate for the outgoing rotation group in August 2017 was 65.2 per cent, which is higher than the rate for the whole sample (64.8 per cent).

THE IMPORTANCE OF TREND DATA

As the gross flows and rotation group data are presented in original terms they are not directly comparable to the seasonally adjusted and trend data discussed elsewhere in the commentary, and are included to provide additional information for the original data. Since the original data are unadjusted, they have a considerable level of inherent sampling variability, which is specifically adjusted for in the trend series. The trend data provide the best measure of the underlying behaviour of the labour market and are the focus of the commentary in this publication.

LABOUR FORCE STATUS (AGED 15 YEARS AND OVER), Australia: Trend

	EMPLOYED				UNEMPLOYED			LABOUR FORCE	
	Full-time	Part-time	Total	Employment to	Looked for	Total	Unemployment rate	Total	Participation rate
				population ratio					
	'000	'000	'000	%	'000	'000	%	'000	%
PERSONS									
August 2014	8 009.2	3 522.9	11 532.1	60.6	546.3	761.3	6.2	12 293.4	64.6
August 2015	8 125.7	3 642.1	11 767.9	61.0	547.6	767.2	6.1	12 535.1	65.0
2016									
August	8 135.0	3 807.2	11 942.2	61.0	497.0	720.0	5.7	12 662.2	64.6
September	8 132.1	3 815.0	11 947.1	60.9	500.2	718.9	5.7	12 666.0	64.6
October	8 133.9	3 820.9	11 954.8	60.9	505.5	720.4	5.7	12 675.2	64.5
November	8 141.8	3 825.3	11 967.0	60.9	512.2	725.2	5.7	12 692.2	64.5
December	8 155.0	3 830.6	11 985.6	60.9	518.0	731.6	5.8	12 717.2	64.6
2017									
January	8 174.0	3 837.0	12 011.0	60.9	521.0	737.0	5.8	12 748.0	64.6
February	8 198.0	3 843.4	12 041.4	61.0	520.3	739.3	5.8	12 780.7	64.7
March	8 228.1	3 847.6	12 075.6	61.0	516.2	737.8	5.8	12 813.4	64.8
April	8 263.6	3 849.6	12 113.2	61.1	510.0	734.0	5.7	12 847.2	64.8
May	8 301.7	3 850.6	12 152.3	61.2	504.3	730.2	5.7	12 882.5	64.9
June	8 336.6	3 852.8	12 189.4	61.4	499.8	727.2	5.6	12 916.6	65.0
July	8 366.8	3 855.6	12 222.4	61.5	496.7	725.3	5.6	12 947.8	65.1
August	8 388.3	3 861.2	12 249.5	61.5	494.1	723.2	5.6	12 972.7	65.2
MALES									
August 2014	5 162.1	1 069.4	6 231.5	66.5	322.4	406.9	6.1	6 638.5	70.9
August 2015	5 209.1	1 119.6	6 328.7	66.7	322.9	409.9	6.1	6 738.6	71.0
2016									
August	5 188.5	1 209.0	6 397.4	66.4	292.1	378.2	5.6	6 775.6	70.3
September	5 189.4	1 210.6	6 400.0	66.4	293.6	379.3	5.6	6 779.3	70.3
October	5 193.3	1 209.6	6 402.9	66.3	296.5	381.7	5.6	6 784.6	70.2
November	5 201.2	1 206.8	6 408.0	66.3	299.8	384.7	5.7	6 792.6	70.2
December	5 212.6	1 204.9	6 417.5	66.3	301.8	387.0	5.7	6 804.5	70.3
2017									
January	5 227.0	1 204.3	6 431.4	66.3	301.7	387.8	5.7	6 819.1	70.3
February	5 243.5	1 204.5	6 448.0	66.4	300.1	387.3	5.7	6 835.4	70.3
March	5 261.7	1 204.0	6 465.7	66.4	297.8	385.9	5.6	6 851.6	70.4
April	5 280.9	1 202.5	6 483.4	66.5	295.5	384.3	5.6	6 867.7	70.5
May	5 299.9	1 200.5	6 500.4	66.6	294.2	383.4	5.6	6 883.7	70.5
June	5 316.0	1 199.4	6 515.4	66.7	293.6	383.1	5.6	6 898.5	70.6
July	5 328.9	1 199.5	6 528.4	66.7	293.5	383.3	5.5	6 911.7	70.7
August	5 337.3	1 201.0	6 538.3	66.8	293.4	382.6	5.5	6 920.8	70.7
FEMALES									
August 2014	2 847.1	2 453.5	5 300.5	54.9	223.9	354.4	6.3	5 654.9	58.6
August 2015	2 916.6	2 522.6	5 439.2	55.5	224.7	357.3	6.2	5 796.5	59.1
2016									
August	2 946.5	2 598.3	5 544.8	55.7	204.9	341.8	5.8	5 886.6	59.1
September	2 942.7	2 604.4	5 547.1	55.7	206.5	339.6	5.8	5 886.7	59.1
October	2 940.6	2 611.3	5 551.9	55.6	209.0	338.7	5.7	5 890.6	59.0
November	2 940.6	2 618.5	5 559.1	55.6	212.4	340.5	5.8	5 899.6	59.0
December	2 942.4	2 625.7	5 568.1	55.6	216.2	344.6	5.8	5 912.7	59.1
2017									
January	2 947.0	2 632.6	5 579.6	55.7	219.3	349.2	5.9	5 928.9	59.1
February	2 954.5	2 638.8	5 593.4	55.7	220.2	351.9	5.9	5 945.3	59.2
March	2 966.4	2 643.6	5 610.0	55.8	218.4	351.9	5.9	5 961.8	59.3
April	2 982.7	2 647.1	5 629.8	55.9	214.5	349.7	5.8	5 979.5	59.4
May	3 001.8	2 650.1	5 651.9	56.1	210.1	346.8	5.8	5 998.7	59.5
June	3 020.5	2 653.5	5 674.0	56.2	206.2	344.1	5.7	6 018.1	59.6
July	3 037.9	2 656.1	5 694.0	56.3	203.2	342.0	5.7	6 036.0	59.7
August	3 051.0	2 660.2	5 711.3	56.5	200.8	340.6	5.6	6 051.9	59.8

LABOUR FORCE STATUS (AGED 15 YEARS AND OVER), Australia: **Seasonally adjusted**

	EMPLOYED				UNEMPLOYED			LABOUR FORCE	
	Full-time	Part-time	Total	Employment to	Looked for	Total	Unemployment rate	Total	Participation rate
				population ratio					
	'000	'000	'000	%	'000	'000	%	'000	%
PERSONS									
August 2014	8 011.9	3 529.3	11 541.2	60.7	546.5	754.4	6.1	12 295.6	64.6
August 2015	8 110.1	3 651.9	11 762.0	61.0	551.0	771.9	6.2	12 533.9	65.0
2016									
August	8 141.1	3 802.2	11 943.3	61.0	504.4	719.7	5.7	12 663.0	64.6
September	8 081.7	3 842.0	11 923.7	60.8	500.0	714.0	5.7	12 637.7	64.4
October	8 128.9	3 809.2	11 938.1	60.8	495.3	707.5	5.6	12 645.7	64.4
November	8 172.9	3 811.5	11 984.3	60.9	515.3	731.1	5.7	12 715.4	64.7
December	8 189.5	3 811.1	12 000.6	61.0	527.4	738.8	5.8	12 739.4	64.7
2017									
January	8 133.5	3 873.5	12 007.1	60.9	513.5	725.0	5.7	12 732.1	64.6
February	8 180.4	3 837.8	12 018.2	60.8	523.4	748.1	5.9	12 766.3	64.6
March	8 248.6	3 824.2	12 072.8	61.0	526.1	751.9	5.9	12 824.7	64.8
April	8 246.2	3 876.7	12 122.8	61.2	512.1	731.6	5.7	12 854.5	64.9
May	8 300.9	3 862.8	12 163.7	61.3	490.0	713.9	5.5	12 877.6	64.9
June	8 372.0	3 813.4	12 185.5	61.3	499.5	728.5	5.6	12 914.0	65.0
July	8 352.2	3 862.6	12 214.7	61.4	495.2	728.5	5.6	12 943.3	65.1
August	8 392.3	3 876.7	12 269.0	61.6	501.6	727.5	5.6	12 996.4	65.3
MALES									
August 2014	5 166.1	1 072.6	6 238.7	66.6	322.0	403.5	6.1	6 642.2	70.9
August 2015	5 202.2	1 119.1	6 321.3	66.6	333.0	415.7	6.2	6 737.0	71.0
2016									
August	5 192.8	1 210.6	6 403.4	66.5	291.0	379.6	5.6	6 783.0	70.4
September	5 158.8	1 224.7	6 383.5	66.2	297.6	380.1	5.6	6 763.6	70.1
October	5 191.5	1 207.5	6 399.0	66.3	289.6	374.4	5.5	6 773.5	70.1
November	5 215.1	1 202.1	6 417.2	66.4	303.4	386.0	5.7	6 803.2	70.4
December	5 227.2	1 196.7	6 423.9	66.4	306.4	398.0	5.8	6 821.9	70.5
2017									
January	5 214.8	1 204.7	6 419.5	66.2	298.6	375.1	5.5	6 794.6	70.0
February	5 236.6	1 203.0	6 439.6	66.3	302.2	395.4	5.8	6 835.0	70.3
March	5 262.7	1 202.5	6 465.2	66.4	302.8	392.8	5.7	6 858.0	70.4
April	5 275.7	1 226.7	6 502.4	66.7	291.0	374.9	5.5	6 877.3	70.6
May	5 298.9	1 203.5	6 502.4	66.6	285.2	378.5	5.5	6 880.9	70.5
June	5 345.8	1 156.9	6 502.7	66.6	298.3	385.7	5.6	6 888.4	70.5
July	5 319.3	1 210.7	6 530.0	66.8	298.3	388.7	5.6	6 918.6	70.7
August	5 327.8	1 217.6	6 545.4	66.8	292.0	381.3	5.5	6 926.7	70.7
FEMALES									
August 2014	2 845.8	2 456.7	5 302.5	54.9	224.5	350.9	6.2	5 653.5	58.6
August 2015	2 907.8	2 532.8	5 440.7	55.5	218.1	356.2	6.1	5 796.9	59.1
2016									
August	2 948.3	2 591.6	5 539.9	55.7	213.4	340.1	5.8	5 880.0	59.1
September	2 922.9	2 617.3	5 540.2	55.6	202.5	334.0	5.7	5 874.2	58.9
October	2 937.4	2 601.6	5 539.1	55.5	205.7	333.1	5.7	5 872.2	58.8
November	2 957.8	2 609.4	5 567.2	55.7	212.0	345.1	5.8	5 912.2	59.2
December	2 962.4	2 614.4	5 576.8	55.7	221.0	340.8	5.8	5 917.5	59.2
2017									
January	2 918.7	2 668.8	5 587.6	55.8	214.9	349.9	5.9	5 937.5	59.2
February	2 943.8	2 634.8	5 578.6	55.6	221.2	352.7	5.9	5 931.3	59.1
March	2 985.9	2 621.7	5 607.6	55.7	223.3	359.1	6.0	5 966.7	59.3
April	2 970.5	2 650.0	5 620.5	55.8	221.1	356.7	6.0	5 977.2	59.4
May	3 002.0	2 659.3	5 661.3	56.2	204.9	335.4	5.6	5 996.7	59.5
June	3 026.3	2 656.5	5 682.8	56.3	201.3	342.8	5.7	6 025.6	59.7
July	3 032.9	2 651.9	5 684.8	56.2	196.8	339.9	5.6	6 024.6	59.6
August	3 064.5	2 659.0	5 723.5	56.6	209.6	346.2	5.7	6 069.7	60.0

LABOUR FORCE STATUS (AGED 15 YEARS AND OVER), Australia: **Original**

	EMPLOYED				UNEMPLOYED			LABOUR FORCE			
	Full-time	Part-time	Total	Employment to	Looked for full-time work	Total	Unemployment rate	Total	Participation rate	Not in the labour force	Civilian population aged 15 and over
				population ratio							
'000	'000	'000	%	'000	'000	%	'000	%	'000	'000	
PERSONS											
August 2014	7 960.2	3 605.2	11 565.4	60.8	516.9	733.1	6.0	12 298.5	64.7	6 721.7	19 020.2
August 2015	8 044.2	3 643.3	11 687.4	60.6	541.6	761.1	6.1	12 448.6	64.5	6 848.5	19 297.0
2016											
August	8 077.7	3 792.6	11 870.3	60.6	494.3	707.9	5.6	12 578.2	64.2	7 010.3	19 588.5
September	8 048.9	3 861.5	11 910.4	60.7	484.6	696.5	5.5	12 606.9	64.3	7 009.0	19 615.9
October	8 097.9	3 854.2	11 952.1	60.9	475.3	676.4	5.4	12 628.6	64.3	7 010.7	19 639.3
November	8 197.2	3 819.9	12 017.1	61.1	488.3	684.0	5.4	12 701.1	64.6	6 961.5	19 662.6
December	8 310.7	3 796.2	12 106.9	61.5	516.6	722.7	5.6	12 829.6	65.2	6 856.4	19 686.0
2017											
January	8 075.4	3 768.6	11 844.0	60.1	562.3	776.3	6.2	12 620.3	64.0	7 101.8	19 722.0
February	8 259.7	3 800.9	12 060.6	61.0	566.7	818.9	6.4	12 879.5	65.2	6 878.6	19 758.1
March	8 225.2	3 854.7	12 079.9	61.0	545.1	802.0	6.2	12 881.9	65.1	6 912.2	19 794.2
April	8 219.9	3 927.8	12 147.7	61.3	509.0	729.7	5.7	12 877.4	65.0	6 939.8	19 817.2
May	8 304.0	3 910.8	12 214.8	61.6	483.5	704.0	5.4	12 918.8	65.1	6 921.5	19 840.3
June	8 351.7	3 859.0	12 210.6	61.5	490.0	705.6	5.5	12 916.2	65.0	6 947.1	19 863.3
July	8 374.6	3 838.9	12 213.5	61.4	485.5	712.0	5.5	12 925.5	65.0	6 963.1	19 888.7
August	8 327.2	3 867.9	12 195.2	61.2	490.8	714.2	5.5	12 909.4	64.8	7 004.6	19 914.0
MALES											
August 2014	5 123.8	1 104.9	6 228.7	66.5	312.8	396.9	6.0	6 625.6	70.7	2 741.1	9 366.7
August 2015	5 167.9	1 109.8	6 277.7	66.1	335.6	417.5	6.2	6 695.2	70.5	2 800.1	9 495.3
2016											
August	5 159.3	1 201.4	6 360.6	66.0	293.0	380.7	5.6	6 741.3	70.0	2 892.7	9 634.1
September	5 128.6	1 237.2	6 365.8	66.0	291.4	377.6	5.6	6 743.4	69.9	2 904.1	9 647.5
October	5 177.4	1 223.1	6 400.5	66.3	283.3	364.3	5.4	6 764.8	70.0	2 894.1	9 658.9
November	5 230.4	1 190.4	6 420.8	66.4	290.9	365.7	5.4	6 786.5	70.2	2 883.8	9 670.3
December	5 301.1	1 177.3	6 478.4	66.9	295.7	392.4	5.7	6 870.8	71.0	2 811.0	9 681.8
2017											
January	5 187.3	1 161.1	6 348.4	65.4	326.4	408.4	6.0	6 756.8	69.7	2 942.8	9 699.7
February	5 292.8	1 179.1	6 471.9	66.6	318.2	423.8	6.1	6 895.7	71.0	2 821.8	9 717.6
March	5 258.0	1 211.6	6 469.7	66.5	308.8	409.9	6.0	6 879.5	70.7	2 856.0	9 735.5
April	5 268.6	1 259.3	6 527.9	67.0	284.9	364.6	5.3	6 892.5	70.7	2 854.2	9 746.7
May	5 299.6	1 231.0	6 530.6	66.9	277.8	368.2	5.3	6 898.7	70.7	2 859.1	9 757.9
June	5 326.9	1 187.4	6 514.3	66.7	293.6	371.5	5.4	6 885.8	70.5	2 883.3	9 769.0
July	5 327.1	1 202.6	6 529.6	66.8	297.7	385.0	5.6	6 914.6	70.7	2 866.6	9 781.2
August	5 292.9	1 209.4	6 502.3	66.4	293.9	381.9	5.5	6 884.2	70.3	2 909.2	9 793.4
FEMALES											
August 2014	2 836.4	2 500.3	5 336.7	55.3	204.2	336.2	5.9	5 672.9	58.8	3 980.5	9 653.4
August 2015	2 876.3	2 533.4	5 409.7	55.2	206.0	343.6	6.0	5 753.3	58.7	4 048.4	9 801.7
2016											
August	2 918.4	2 591.2	5 509.7	55.3	201.3	327.2	5.6	5 836.9	58.6	4 117.6	9 954.5
September	2 920.2	2 624.3	5 544.6	55.6	193.1	318.9	5.4	5 863.4	58.8	4 105.0	9 968.4
October	2 920.5	2 631.1	5 551.6	55.6	192.0	312.1	5.3	5 863.7	58.8	4 116.6	9 980.3
November	2 966.8	2 629.5	5 596.3	56.0	197.4	318.3	5.4	5 914.6	59.2	4 077.7	9 992.3
December	3 009.6	2 618.9	5 628.5	56.3	220.9	330.3	5.5	5 958.8	59.6	4 045.4	10 004.2
2017											
January	2 888.1	2 607.5	5 495.5	54.8	235.9	367.9	6.3	5 863.4	58.5	4 158.9	10 022.4
February	2 966.8	2 621.9	5 588.7	55.7	248.4	395.1	6.6	5 983.8	59.6	4 056.8	10 040.5
March	2 967.1	2 643.1	5 610.3	55.8	236.3	392.2	6.5	6 002.4	59.7	4 056.3	10 058.7
April	2 951.3	2 668.5	5 619.8	55.8	224.2	365.1	6.1	5 984.9	59.4	4 085.7	10 070.5
May	3 004.4	2 679.8	5 684.2	56.4	205.7	335.9	5.6	6 020.0	59.7	4 062.4	10 082.4
June	3 024.7	2 671.6	5 696.3	56.4	196.3	334.1	5.5	6 030.4	59.7	4 063.8	10 094.3
July	3 047.5	2 636.3	5 683.9	56.2	187.9	327.0	5.4	6 010.9	59.5	4 096.5	10 107.4
August	3 034.3	2 658.5	5 692.9	56.3	196.9	332.3	5.5	6 025.2	59.5	4 095.4	10 120.6

	EMPLOYED		Employment to population ratio	UNEMPLOYED		LABOUR FORCE	
	Full-time	Total		Total	Unemployment rate	Labour force	Participation rate
	'000	'000		'000	%	'000	%

TREND

New South Wales	2 711.9	3 875.0	60.6	198.9	4.9	4 073.8	63.7
Victoria	2 134.2	3 160.2	62.2	203.7	6.1	3 364.0	66.2
Queensland	1 650.5	2 429.7	61.5	154.9	6.0	2 584.6	65.5
South Australia	536.4	827.0	58.5	53.7	6.1	880.6	62.3
Western Australia	941.2	1 366.6	64.2	80.1	5.5	1 446.7	68.0
Tasmania	155.1	246.5	57.6	15.9	6.1	262.4	61.3
Northern Territory	103.9	132.2	70.7	5.0	3.6	137.2	73.3
Australian Capital Territory	158.0	217.1	67.5	10.7	4.7	227.7	70.8
Australia	8 388.3	12 249.5	61.5	723.2	5.6	12 972.7	65.2

SEASONALLY ADJUSTED

New South Wales	2 719.8	3 874.2	60.6	202.2	5.0	4 076.4	63.7
Victoria	2 133.3	3 165.9	62.3	206.2	6.1	3 372.1	66.3
Queensland	1 655.4	2 440.4	61.8	147.9	5.7	2 588.4	65.5
South Australia	534.9	828.6	58.6	50.4	5.7	878.9	62.1
Western Australia	936.2	1 363.4	64.0	85.1	5.9	1 448.5	68.0
Tasmania	154.4	245.8	57.4	15.8	6.0	261.6	61.1
Australia	8 392.3	12 269.0	61.6	727.5	5.6	12 996.4	65.3

ORIGINAL

New South Wales	2 692.6	3 847.0	60.1	200.9	5.0	4 047.8	63.3
Victoria	2 113.5	3 144.8	61.8	205.9	6.1	3 350.6	65.9
Queensland	1 650.9	2 433.5	61.6	145.3	5.6	2 578.8	65.3
South Australia	530.1	823.5	58.2	47.7	5.5	871.2	61.6
Western Australia	925.9	1 352.3	63.5	83.0	5.8	1 435.3	67.4
Tasmania	152.2	244.1	57.0	16.1	6.2	260.2	60.8
Northern Territory	104.8	132.9	71.0	6.1	4.4	138.9	74.2
Australian Capital Territory	157.3	217.2	67.5	9.3	4.1	226.5	70.4
Australia	8 327.2	12 195.2	61.2	714.2	5.5	12 909.4	64.8

	EMPLOYED FULL-TIME		EMPLOYED TOTAL		UNEMPLOYED TOTAL		UNEMPLOYMENT RATE		PARTICIPATION RATE		CIVILIAN POPULATION AGED 15 YEARS AND OVER

	<i>Trend</i>	<i>Seasonally adjusted</i>	<i>Trend</i>	<i>Seasonally adjusted</i>	<i>Trend</i>	<i>Seasonally adjusted</i>	<i>Trend</i>	<i>Seasonally adjusted</i>	<i>Trend</i>	<i>Seasonally adjusted</i>	<i>Original</i>
	'000	'000	'000	'000	'000	'000	%	%	%	%	'000
PERSONS											
August 2014	2 535.2	2 539.5	3 614.8	3 620.1	224.2	220.8	5.8	5.7	62.9	63.0	6 099.0
August 2015	2 631.9	2 627.6	3 734.3	3 734.5	229.3	234.8	5.8	5.9	64.0	64.1	6 191.7
2016											
August	2 611.4	2 602.5	3 812.2	3 802.6	201.5	199.8	5.0	5.0	63.8	63.6	6 289.2
September	2 610.9	2 601.4	3 809.1	3 811.5	199.3	195.1	5.0	4.9	63.7	63.6	6 298.9
October	2 613.2	2 632.9	3 805.0	3 804.6	199.0	195.7	5.0	4.9	63.5	63.4	6 306.9
November	2 616.4	2 615.9	3 800.9	3 807.6	200.5	198.1	5.0	4.9	63.4	63.4	6 314.9
December	2 618.9	2 622.1	3 798.1	3 805.5	202.4	207.9	5.1	5.2	63.2	63.5	6 323.0
2017											
January	2 621.4	2 614.7	3 798.4	3 788.2	203.4	201.9	5.1	5.1	63.2	63.0	6 335.1
February	2 625.8	2 629.3	3 803.7	3 791.4	202.5	210.0	5.1	5.2	63.1	63.0	6 347.1
March	2 635.0	2 635.4	3 814.3	3 814.3	200.3	203.3	5.0	5.1	63.2	63.2	6 359.2
April	2 649.2	2 626.2	3 828.5	3 825.3	198.1	188.9	4.9	4.7	63.3	63.1	6 366.3
May	2 666.1	2 676.4	3 843.2	3 856.6	196.9	193.5	4.9	4.8	63.4	63.5	6 373.3
June	2 683.1	2 692.4	3 856.2	3 861.4	197.0	196.8	4.9	4.9	63.5	63.6	6 380.4
July	2 698.9	2 696.7	3 867.0	3 861.4	198.0	202.2	4.9	5.0	63.6	63.6	6 389.3
August	2 711.9	2 719.8	3 875.0	3 874.2	198.9	202.2	4.9	5.0	63.7	63.7	6 398.2
MALES											
August 2014	1 632.7	1 632.1	1 961.0	1 962.0	117.4	114.6	5.6	5.5	69.5	69.4	2 992.7
August 2015	1 659.2	1 661.1	2 007.6	2 005.3	114.0	117.6	5.4	5.5	69.9	69.9	3 037.0
2016											
August	1 642.4	1 641.1	2 039.1	2 038.1	102.5	103.1	4.8	4.8	69.4	69.4	3 085.4
September	1 642.0	1 633.0	2 039.0	2 040.2	101.0	99.9	4.7	4.7	69.3	69.3	3 090.3
October	1 643.5	1 650.7	2 037.6	2 040.2	101.2	98.2	4.7	4.6	69.1	69.1	3 094.3
November	1 647.1	1 648.9	2 036.0	2 038.9	102.8	100.0	4.8	4.7	69.0	69.0	3 098.3
December	1 652.0	1 650.0	2 035.8	2 036.1	104.8	108.6	4.9	5.1	69.0	69.1	3 102.4
2017											
January	1 657.4	1 655.4	2 037.2	2 027.8	106.1	103.6	5.0	4.9	68.9	68.6	3 108.5
February	1 663.3	1 665.4	2 040.8	2 037.4	106.6	115.3	5.0	5.4	69.0	69.1	3 114.6
March	1 670.0	1 671.5	2 046.1	2 047.7	106.3	108.4	4.9	5.0	69.0	69.1	3 120.7
April	1 676.9	1 671.9	2 052.1	2 059.2	106.1	97.3	4.9	4.5	69.1	69.0	3 124.3
May	1 683.6	1 683.8	2 057.5	2 062.0	106.6	103.3	4.9	4.8	69.2	69.2	3 127.8
June	1 689.3	1 695.6	2 061.7	2 052.3	108.1	108.2	5.0	5.0	69.3	69.0	3 131.4
July	1 694.1	1 696.1	2 065.0	2 069.0	110.0	116.1	5.1	5.3	69.4	69.7	3 135.8
August	1 697.4	1 693.6	2 067.1	2 066.6	111.6	112.8	5.1	5.2	69.4	69.4	3 140.2
FEMALES											
August 2014	902.5	907.4	1 653.8	1 658.1	106.9	106.2	6.1	6.0	56.7	56.8	3 106.3
August 2015	972.7	966.5	1 726.7	1 729.2	115.4	117.1	6.3	6.3	58.4	58.5	3 154.6
2016											
August	969.0	961.4	1 773.1	1 764.6	99.0	96.7	5.3	5.2	58.4	58.1	3 203.8
September	969.0	968.4	1 770.1	1 771.3	98.3	95.2	5.3	5.1	58.2	58.2	3 208.6
October	969.7	982.2	1 767.4	1 764.4	97.8	97.6	5.2	5.2	58.1	58.0	3 212.6
November	969.2	967.0	1 764.8	1 768.7	97.7	98.2	5.2	5.3	57.9	58.0	3 216.6
December	966.9	972.1	1 762.2	1 769.4	97.6	99.4	5.2	5.3	57.7	58.0	3 220.6
2017											
January	964.1	959.3	1 761.2	1 760.3	97.2	98.4	5.2	5.3	57.6	57.6	3 226.6
February	962.5	963.9	1 762.9	1 754.0	96.0	94.7	5.2	5.1	57.5	57.2	3 232.6
March	965.0	963.9	1 768.2	1 766.7	94.0	94.9	5.1	5.1	57.5	57.5	3 238.5
April	972.3	954.4	1 776.4	1 766.1	92.0	91.5	4.9	4.9	57.6	57.3	3 242.0
May	982.5	992.7	1 785.7	1 794.6	90.3	90.2	4.8	4.8	57.8	58.1	3 245.5
June	993.8	996.8	1 794.5	1 809.1	89.0	88.6	4.7	4.7	58.0	58.4	3 249.0
July	1 004.8	1 000.6	1 802.0	1 792.4	87.9	86.1	4.7	4.6	58.1	57.7	3 253.5
August	1 014.5	1 026.2	1 807.8	1 807.7	87.3	89.3	4.6	4.7	58.2	58.2	3 258.0

LABOUR FORCE STATUS (AGED 15 YEARS AND OVER)—Victoria

	EMPLOYED FULL-TIME		EMPLOYED TOTAL		UNEMPLOYED TOTAL		UNEMPLOYMENT RATE		PARTICIPATION RATE		CIVILIAN POPULATION AGED 15 YEARS AND OVER

	<i>Trend</i>	<i>Seasonally adjusted</i>	<i>Trend</i>	<i>Seasonally adjusted</i>	<i>Trend</i>	<i>Seasonally adjusted</i>	<i>Trend</i>	<i>Seasonally adjusted</i>	<i>Trend</i>	<i>Seasonally adjusted</i>	<i>Original</i>
	'000	'000	'000	'000	'000	'000	%	%	%	%	'000
PERSONS											
August 2014	1 955.1	1 958.4	2 879.8	2 878.8	210.0	210.6	6.8	6.8	64.7	64.7	4 776.1
August 2015	1 964.4	1 954.5	2 953.5	2 941.3	191.0	186.6	6.1	6.0	64.6	64.3	4 866.0
2016											
August	2 061.0	2 066.4	3 063.4	3 070.4	186.4	180.1	5.7	5.5	65.4	65.4	4 968.7
September	2 061.6	2 046.1	3 072.4	3 061.4	188.5	187.2	5.8	5.8	65.5	65.3	4 977.9
October	2 062.6	2 051.8	3 079.5	3 084.5	190.6	187.9	5.8	5.7	65.6	65.6	4 986.8
November	2 065.1	2 069.5	3 085.5	3 085.5	193.1	199.4	5.9	6.1	65.6	65.8	4 995.7
December	2 069.6	2 084.5	3 092.2	3 100.3	195.8	200.0	6.0	6.1	65.7	65.9	5 004.5
2017											
January	2 075.7	2 069.3	3 100.6	3 088.0	198.0	189.6	6.0	5.8	65.7	65.3	5 017.6
February	2 082.8	2 080.1	3 110.4	3 108.7	199.6	199.3	6.0	6.0	65.8	65.8	5 030.7
March	2 090.8	2 093.0	3 120.7	3 119.7	200.5	204.2	6.0	6.1	65.9	65.9	5 043.8
April	2 099.9	2 087.5	3 130.9	3 137.5	201.2	204.1	6.0	6.1	66.0	66.1	5 051.7
May	2 110.0	2 113.3	3 140.5	3 144.8	202.0	200.6	6.0	6.0	66.1	66.1	5 059.5
June	2 119.7	2 134.5	3 148.7	3 148.9	202.8	198.5	6.1	5.9	66.1	66.1	5 067.4
July	2 128.2	2 123.0	3 155.6	3 147.3	203.5	204.4	6.1	6.1	66.2	66.0	5 076.2
August	2 134.2	2 133.3	3 160.2	3 165.9	203.7	206.2	6.1	6.1	66.2	66.3	5 084.9
MALES											
August 2014	1 255.3	1 258.6	1 553.3	1 554.8	112.2	112.0	6.7	6.7	71.2	71.3	2 338.7
August 2015	1 286.3	1 281.3	1 596.5	1 591.8	96.0	91.0	5.7	5.4	71.1	70.7	2 381.7
2016											
August	1 334.2	1 336.7	1 656.3	1 657.7	97.1	99.2	5.5	5.6	72.1	72.2	2 431.8
September	1 335.7	1 324.1	1 657.8	1 650.1	99.7	97.9	5.7	5.6	72.1	71.7	2 436.5
October	1 337.3	1 339.4	1 658.6	1 664.5	101.5	102.4	5.8	5.8	72.1	72.4	2 440.9
November	1 339.1	1 342.2	1 659.3	1 660.8	102.3	101.3	5.8	5.7	72.0	72.1	2 445.4
December	1 340.9	1 343.6	1 660.6	1 664.2	102.5	108.8	5.8	6.1	71.9	72.4	2 449.9
2017											
January	1 343.3	1 341.5	1 663.4	1 652.4	102.1	97.4	5.8	5.6	71.9	71.2	2 456.4
February	1 346.6	1 348.1	1 667.6	1 669.6	101.6	100.2	5.7	5.7	71.8	71.9	2 463.0
March	1 351.0	1 348.4	1 673.1	1 671.5	101.2	102.4	5.7	5.8	71.9	71.8	2 469.6
April	1 356.5	1 346.9	1 679.2	1 682.6	101.1	100.4	5.7	5.6	72.0	72.1	2 473.3
May	1 362.4	1 365.7	1 685.0	1 686.2	101.2	101.7	5.7	5.7	72.1	72.2	2 477.1
June	1 367.6	1 382.3	1 689.8	1 692.0	101.3	101.8	5.7	5.7	72.2	72.3	2 480.9
July	1 371.8	1 367.3	1 693.7	1 691.6	101.4	101.0	5.7	5.6	72.2	72.1	2 485.1
August	1 374.6	1 370.1	1 695.9	1 695.9	101.2	101.0	5.6	5.6	72.2	72.2	2 489.4
FEMALES											
August 2014	699.9	699.9	1 326.6	1 323.9	97.8	98.6	6.9	6.9	58.4	58.4	2 437.4
August 2015	678.0	673.1	1 357.0	1 349.5	95.0	95.6	6.5	6.6	58.5	58.2	2 484.3
2016											
August	726.8	729.7	1 407.1	1 412.7	89.3	80.9	6.0	5.4	59.0	58.9	2 536.8
September	725.9	722.0	1 414.6	1 411.2	88.8	89.3	5.9	6.0	59.2	59.0	2 541.4
October	725.2	712.5	1 420.9	1 420.0	89.2	85.5	5.9	5.7	59.3	59.1	2 545.8
November	726.0	727.3	1 426.3	1 424.7	90.8	98.1	6.0	6.4	59.5	59.7	2 550.3
December	728.7	740.9	1 431.6	1 436.1	93.3	91.1	6.1	6.0	59.7	59.8	2 554.7
2017											
January	732.3	727.8	1 437.3	1 435.6	96.0	92.2	6.3	6.0	59.9	59.7	2 561.2
February	736.2	732.0	1 442.7	1 439.1	98.0	99.1	6.4	6.4	60.0	59.9	2 567.7
March	739.8	744.6	1 447.6	1 448.2	99.3	101.8	6.4	6.6	60.1	60.2	2 574.2
April	743.4	740.6	1 451.7	1 454.9	100.2	103.6	6.5	6.6	60.2	60.4	2 578.3
May	747.6	747.6	1 455.5	1 458.6	100.9	98.9	6.5	6.3	60.3	60.3	2 582.4
June	752.1	752.2	1 458.9	1 456.8	101.5	96.7	6.5	6.2	60.3	60.1	2 586.6
July	756.4	755.7	1 461.9	1 455.7	102.1	103.4	6.5	6.6	60.4	60.2	2 591.1
August	759.7	763.1	1 464.3	1 470.0	102.5	105.2	6.5	6.7	60.4	60.7	2 595.6

	EMPLOYED FULL-TIME		EMPLOYED TOTAL		UNEMPLOYED TOTAL		UNEMPLOYMENT RATE		PARTICIPATION RATE		CIVILIAN POPULATION AGED 15 YEARS AND OVER

	<i>Trend</i>	<i>Seasonally adjusted</i>	<i>Trend</i>	<i>Seasonally adjusted</i>	<i>Trend</i>	<i>Seasonally adjusted</i>	<i>Trend</i>	<i>Seasonally adjusted</i>	<i>Trend</i>	<i>Seasonally adjusted</i>	<i>Original</i>
	'000	'000	'000	'000	'000	'000	%	%	%	%	'000
PERSONS											
August 2014	1 619.2	1 616.9	2 322.8	2 326.8	164.4	165.1	6.6	6.6	65.9	66.0	3 777.2
August 2015	1 639.1	1 629.3	2 346.5	2 341.5	156.4	158.9	6.2	6.4	65.4	65.3	3 826.9
2016											
August	1 624.9	1 636.8	2 342.5	2 345.0	153.7	155.0	6.2	6.2	64.3	64.4	3 883.3
September	1 623.0	1 603.6	2 340.9	2 336.6	151.9	155.6	6.1	6.2	64.1	64.1	3 888.6
October	1 619.7	1 608.5	2 340.4	2 320.6	151.8	145.8	6.1	5.9	64.0	63.3	3 893.4
November	1 617.3	1 638.1	2 342.0	2 359.6	153.3	151.7	6.1	6.0	64.0	64.4	3 898.3
December	1 617.0	1 631.3	2 346.6	2 348.3	155.6	155.6	6.2	6.2	64.1	64.2	3 903.1
2017											
January	1 619.4	1 597.3	2 353.6	2 355.6	158.0	158.3	6.3	6.3	64.2	64.3	3 909.9
February	1 623.7	1 608.8	2 361.9	2 345.9	160.1	166.9	6.3	6.6	64.4	64.2	3 916.7
March	1 628.9	1 640.1	2 371.5	2 378.4	161.3	158.9	6.4	6.3	64.6	64.7	3 923.5
April	1 634.6	1 648.1	2 382.4	2 388.3	161.1	160.5	6.3	6.3	64.7	64.9	3 929.0
May	1 640.6	1 636.5	2 394.9	2 395.2	160.0	155.9	6.3	6.1	64.9	64.8	3 934.5
June	1 645.2	1 644.9	2 407.5	2 395.2	158.6	165.3	6.2	6.5	65.1	65.0	3 940.0
July	1 648.8	1 640.7	2 419.2	2 423.7	156.9	159.3	6.1	6.2	65.3	65.5	3 944.7
August	1 650.5	1 655.4	2 429.7	2 440.4	154.9	147.9	6.0	5.7	65.5	65.5	3 949.4
MALES											
August 2014	1 028.9	1 027.6	1 235.1	1 236.5	86.7	89.1	6.6	6.7	71.1	71.3	1 859.9
August 2015	1 032.8	1 029.6	1 242.3	1 240.8	90.8	93.6	6.8	7.0	70.9	70.9	1 881.5
2016											
August	1 022.0	1 026.2	1 242.5	1 244.1	81.0	79.0	6.1	6.0	69.4	69.4	1 906.8
September	1 021.8	1 011.7	1 241.4	1 240.6	80.4	81.0	6.1	6.1	69.2	69.2	1 909.2
October	1 020.7	1 012.3	1 239.7	1 226.4	81.1	79.2	6.1	6.1	69.1	68.3	1 911.5
November	1 019.4	1 027.6	1 238.5	1 246.0	82.5	83.2	6.2	6.3	69.0	69.5	1 913.7
December	1 018.7	1 032.3	1 239.2	1 243.2	84.1	85.9	6.4	6.5	69.0	69.4	1 916.0
2017											
January	1 019.3	1 012.2	1 241.8	1 243.8	85.3	83.5	6.4	6.3	69.1	69.2	1 919.3
February	1 020.7	1 011.7	1 245.9	1 236.7	86.3	89.2	6.5	6.7	69.3	69.0	1 922.6
March	1 023.2	1 018.6	1 251.2	1 248.4	86.8	85.0	6.5	6.4	69.5	69.2	1 926.0
April	1 026.9	1 034.8	1 257.4	1 263.2	86.7	85.6	6.4	6.3	69.7	69.9	1 928.6
May	1 031.7	1 034.8	1 264.4	1 268.6	85.9	86.3	6.4	6.4	69.9	70.2	1 931.2
June	1 036.1	1 036.7	1 271.3	1 266.5	84.7	88.4	6.2	6.5	70.1	70.1	1 933.8
July	1 039.9	1 033.5	1 277.5	1 275.7	83.2	85.2	6.1	6.3	70.3	70.3	1 935.9
August	1 042.6	1 045.9	1 283.0	1 288.4	81.2	74.4	6.0	5.5	70.4	70.3	1 938.0
FEMALES											
August 2014	590.3	589.3	1 087.8	1 090.3	77.8	76.0	6.7	6.5	60.8	60.8	1 917.3
August 2015	606.3	599.7	1 104.3	1 100.7	65.6	65.3	5.6	5.6	60.1	59.9	1 945.5
2016											
August	602.9	610.6	1 100.0	1 101.0	72.7	76.0	6.2	6.5	59.3	59.5	1 976.6
September	601.1	591.9	1 099.6	1 096.1	71.5	74.6	6.1	6.4	59.2	59.1	1 979.4
October	599.0	596.3	1 100.7	1 094.2	70.7	66.6	6.0	5.7	59.1	58.6	1 982.0
November	597.9	610.5	1 103.5	1 113.5	70.8	68.5	6.0	5.8	59.2	59.6	1 984.5
December	598.3	599.0	1 107.4	1 105.1	71.6	69.7	6.1	5.9	59.3	59.1	1 987.1
2017											
January	600.2	585.1	1 111.8	1 111.8	72.7	74.7	6.1	6.3	59.5	59.6	1 990.6
February	603.0	597.1	1 116.0	1 109.2	73.8	77.6	6.2	6.5	59.7	59.5	1 994.0
March	605.7	621.5	1 120.3	1 130.0	74.5	73.9	6.2	6.1	59.8	60.3	1 997.5
April	607.7	613.2	1 125.0	1 125.2	74.5	75.0	6.2	6.2	60.0	60.0	2 000.4
May	608.9	601.7	1 130.5	1 126.6	74.1	69.6	6.2	5.8	60.1	59.7	2 003.3
June	609.1	608.2	1 136.2	1 128.7	73.9	76.8	6.1	6.4	60.3	60.1	2 006.3
July	608.9	607.1	1 141.7	1 148.0	73.7	74.0	6.1	6.1	60.5	60.8	2 008.9
August	607.9	609.5	1 146.8	1 152.0	73.6	73.5	6.0	6.0	60.7	60.9	2 011.4

	EMPLOYED FULL-TIME		EMPLOYED TOTAL		UNEMPLOYED TOTAL		UNEMPLOYMENT RATE		PARTICIPATION RATE		CIVILIAN POPULATION AGED 15 YEARS AND OVER
	Trend		Trend		Trend		Trend		Trend		Original
	Seasonally adjusted		Seasonally adjusted		Seasonally adjusted		Seasonally adjusted		Seasonally adjusted		
	'000	'000	'000	'000	'000	'000	%	%	%	%	
PERSONS											
August 2014	538.2	538.1	804.4	808.0	56.9	51.2	6.6	6.0	62.1	62.0	1 386.1
August 2015	523.2	526.0	803.5	806.3	68.9	68.8	7.9	7.9	62.4	62.6	1 397.8
2016											
August	523.0	524.9	812.2	812.1	58.9	60.8	6.8	7.0	62.0	62.1	1 406.1
September	524.4	522.9	813.0	811.9	58.7	58.9	6.7	6.8	62.0	61.9	1 406.9
October	526.0	522.9	814.4	814.7	58.1	56.1	6.7	6.4	62.0	61.9	1 407.3
November	527.2	530.1	816.0	815.3	57.7	60.7	6.6	6.9	62.1	62.2	1 407.7
December	527.8	528.3	817.2	815.0	57.8	57.2	6.6	6.6	62.1	61.9	1 408.1
2017											
January	528.0	532.3	818.0	821.5	58.4	55.7	6.7	6.3	62.2	62.2	1 409.3
February	528.4	523.7	818.4	821.0	59.4	57.7	6.8	6.6	62.2	62.3	1 410.5
March	528.9	528.1	818.8	818.9	60.3	61.6	6.9	7.0	62.3	62.4	1 411.7
April	529.9	530.5	819.6	813.9	60.3	63.9	6.8	7.3	62.3	62.2	1 412.3
May	531.6	528.7	821.0	820.1	59.4	60.2	6.7	6.8	62.3	62.3	1 412.9
June	533.3	537.4	822.9	824.8	57.7	57.8	6.6	6.5	62.3	62.4	1 413.5
July	534.8	535.6	824.9	826.4	55.8	54.6	6.3	6.2	62.3	62.3	1 414.1
August	536.4	534.9	827.0	828.6	53.7	50.4	6.1	5.7	62.3	62.1	1 414.8
MALES											
August 2014	355.8	357.3	433.5	434.2	31.7	27.3	6.8	5.9	68.4	67.9	679.8
August 2015	340.7	340.9	423.9	423.7	40.0	40.1	8.6	8.6	67.7	67.7	685.4
2016											
August	336.3	337.6	427.9	429.0	32.3	31.4	7.0	6.8	66.8	66.8	689.3
September	337.1	336.0	427.7	425.8	32.3	32.9	7.0	7.2	66.7	66.5	689.7
October	337.9	336.4	427.6	428.6	32.4	29.9	7.0	6.5	66.7	66.4	689.9
November	338.6	341.0	427.8	427.4	32.7	34.4	7.1	7.4	66.7	66.9	690.1
December	339.4	340.9	428.3	427.3	32.9	35.0	7.1	7.6	66.8	67.0	690.3
2017											
January	340.5	339.5	429.5	429.6	32.9	31.2	7.1	6.8	66.9	66.7	690.9
February	342.1	339.1	431.0	431.3	32.5	31.5	7.0	6.8	67.0	66.9	691.5
March	344.0	344.4	432.5	432.6	31.8	33.5	6.8	7.2	67.1	67.4	692.1
April	346.0	347.2	434.1	434.6	30.8	29.4	6.6	6.3	67.1	67.0	692.4
May	348.0	348.1	435.7	435.9	29.5	31.8	6.3	6.8	67.2	67.5	692.7
June	349.5	351.6	437.2	436.6	28.2	27.2	6.1	5.9	67.2	66.9	693.0
July	350.7	349.5	438.7	437.5	26.9	26.8	5.8	5.8	67.2	67.0	693.3
August	351.5	350.7	439.9	442.2	25.6	24.3	5.5	5.2	67.1	67.3	693.6
FEMALES											
August 2014	182.4	180.7	370.9	373.8	25.3	23.8	6.4	6.0	56.1	56.3	706.3
August 2015	182.5	185.1	379.6	382.6	28.8	28.7	7.1	7.0	57.3	57.7	712.4
2016											
August	186.7	187.3	384.3	383.1	26.7	29.4	6.5	7.1	57.3	57.5	716.9
September	187.4	186.9	385.3	386.1	26.4	26.0	6.4	6.3	57.4	57.5	717.2
October	188.1	186.5	386.8	386.2	25.7	26.3	6.2	6.4	57.5	57.5	717.4
November	188.6	189.2	388.2	388.0	25.0	26.3	6.0	6.4	57.6	57.7	717.6
December	188.4	187.5	388.8	387.7	24.9	22.2	6.0	5.4	57.6	57.1	717.8
2017											
January	187.5	192.8	388.5	391.9	25.6	24.5	6.2	5.9	57.6	58.0	718.4
February	186.2	184.5	387.5	389.7	26.9	26.2	6.5	6.3	57.6	57.8	719.0
March	184.9	183.7	386.3	386.3	28.4	28.0	6.9	6.8	57.6	57.6	719.6
April	183.9	183.3	385.5	379.3	29.5	34.5	7.1	8.3	57.6	57.5	719.9
May	183.6	180.6	385.3	384.2	29.8	28.3	7.2	6.9	57.6	57.3	720.2
June	183.8	185.8	385.7	388.2	29.5	30.6	7.1	7.3	57.6	58.1	720.5
July	184.1	186.1	386.3	388.9	28.9	27.8	7.0	6.7	57.6	57.8	720.9
August	184.8	184.2	387.0	386.3	28.0	26.1	6.8	6.3	57.6	57.2	721.2

	EMPLOYED FULL-TIME		EMPLOYED TOTAL		UNEMPLOYED TOTAL		UNEMPLOYMENT RATE		PARTICIPATION RATE		CIVILIAN POPULATION AGED 15 YEARS AND OVER
	Trend	Seasonally adjusted	Trend	Seasonally adjusted	Trend	Seasonally adjusted	Trend	Seasonally adjusted	Trend	Seasonally adjusted	Original
	'000	'000	'000	'000	'000	'000	%	%	%	%	'000
PERSONS											
August 2014	949.6	946.9	1 339.6	1 335.4	70.6	70.2	5.0	5.0	68.2	68.0	2 067.7
August 2015	949.7	955.0	1 350.1	1 353.6	88.0	86.3	6.1	6.0	68.7	68.8	2 092.6
2016											
August	898.1	899.7	1 332.3	1 330.6	89.2	89.1	6.3	6.3	67.3	67.2	2 112.4
September	896.7	890.1	1 330.5	1 323.7	90.8	85.2	6.4	6.0	67.3	66.6	2 114.0
October	897.4	895.7	1 330.8	1 331.4	91.8	91.5	6.4	6.4	67.3	67.3	2 114.8
November	900.0	907.0	1 332.5	1 337.8	92.4	97.7	6.5	6.8	67.3	67.9	2 115.5
December	904.6	905.5	1 335.0	1 330.3	92.4	92.7	6.5	6.5	67.4	67.2	2 116.3
2017											
January	910.6	902.9	1 338.1	1 345.2	91.5	90.9	6.4	6.3	67.5	67.8	2 118.4
February	917.3	917.7	1 342.0	1 339.8	89.4	85.5	6.2	6.0	67.5	67.2	2 120.4
March	924.0	926.4	1 346.4	1 339.0	86.7	92.4	6.0	6.5	67.5	67.4	2 122.5
April	929.8	933.2	1 351.3	1 353.7	84.1	84.0	5.9	5.8	67.6	67.7	2 123.8
May	934.6	933.5	1 356.2	1 358.0	82.3	78.4	5.7	5.5	67.7	67.6	2 125.1
June	938.0	940.5	1 360.4	1 364.8	81.1	80.7	5.6	5.6	67.8	68.0	2 126.5
July	940.4	941.9	1 363.7	1 363.5	80.3	77.7	5.6	5.4	67.9	67.7	2 128.0
August	941.2	936.2	1 366.6	1 363.4	80.1	85.1	5.5	5.9	68.0	68.0	2 129.6
MALES											
August 2014	635.8	636.8	747.6	747.6	39.5	37.7	5.0	4.8	75.6	75.5	1 040.5
August 2015	635.2	632.6	753.4	753.0	50.8	51.9	6.3	6.5	76.5	76.6	1 050.9
2016											
August	599.0	600.2	728.4	729.3	47.7	45.5	6.1	5.9	73.3	73.2	1 059.2
September	597.7	595.0	727.6	722.8	48.7	50.6	6.3	6.5	73.3	73.0	1 059.9
October	597.7	596.9	728.4	729.1	49.3	48.1	6.3	6.2	73.4	73.3	1 060.2
November	599.2	601.6	730.5	731.8	49.3	52.5	6.3	6.7	73.5	74.0	1 060.4
December	602.2	601.8	733.4	734.5	48.7	48.4	6.2	6.2	73.7	73.8	1 060.7
2017											
January	605.9	601.3	736.8	735.2	47.6	46.1	6.1	5.9	73.9	73.6	1 061.7
February	610.0	612.0	740.3	740.6	46.3	44.6	5.9	5.7	74.0	73.9	1 062.6
March	613.4	615.0	743.3	742.6	45.1	48.5	5.7	6.1	74.1	74.4	1 063.5
April	615.8	619.7	745.7	748.5	44.3	43.9	5.6	5.5	74.2	74.5	1 064.1
May	617.1	614.9	747.3	745.7	44.0	41.3	5.6	5.2	74.3	73.9	1 064.7
June	617.6	617.8	748.3	751.6	43.9	44.2	5.5	5.6	74.4	74.7	1 065.3
July	617.7	619.2	748.7	748.8	44.0	43.5	5.6	5.5	74.4	74.3	1 066.0
August	617.0	613.8	748.6	745.0	44.3	46.6	5.6	5.9	74.4	74.2	1 066.7
FEMALES											
August 2014	313.8	310.2	592.0	587.8	31.1	32.5	5.0	5.2	60.7	60.4	1 027.2
August 2015	314.6	322.4	596.6	600.6	37.2	34.4	5.9	5.4	60.9	61.0	1 041.7
2016											
August	299.1	299.5	603.8	601.3	41.6	43.5	6.4	6.8	61.3	61.2	1 053.2
September	299.1	295.2	602.9	600.9	42.0	34.6	6.5	5.4	61.2	60.3	1 054.1
October	299.7	298.8	602.4	602.3	42.5	43.3	6.6	6.7	61.2	61.2	1 054.6
November	300.8	305.3	602.0	606.0	43.1	45.2	6.7	6.9	61.1	61.7	1 055.1
December	302.4	303.7	601.5	595.8	43.7	44.3	6.8	6.9	61.1	60.6	1 055.6
2017											
January	304.6	301.6	601.3	610.0	43.8	44.8	6.8	6.8	61.1	62.0	1 056.7
February	307.3	305.6	601.7	599.2	43.1	40.9	6.7	6.4	61.0	60.5	1 057.8
March	310.5	311.4	603.1	596.4	41.6	43.9	6.4	6.9	60.9	60.5	1 059.0
April	314.0	313.5	605.6	605.2	39.8	40.1	6.2	6.2	60.9	60.9	1 059.7
May	317.5	318.6	608.8	612.3	38.3	37.0	5.9	5.7	61.0	61.2	1 060.4
June	320.4	322.7	612.1	613.3	37.2	36.5	5.7	5.6	61.2	61.2	1 061.2
July	322.7	322.7	615.0	614.7	36.3	34.2	5.6	5.3	61.3	61.1	1 062.0
August	324.2	322.4	618.0	618.4	35.8	38.6	5.5	5.9	61.5	61.8	1 062.9

	EMPLOYED FULL-TIME		EMPLOYED TOTAL		UNEMPLOYED TOTAL		UNEMPLOYMENT RATE		PARTICIPATION RATE		CIVILIAN POPULATION AGED 15 YEARS AND OVER
	Trend	Seasonally adjusted	Trend	Seasonally adjusted	Trend	Seasonally adjusted	Trend	Seasonally adjusted	Trend	Seasonally adjusted	Original
	'000	'000	'000	'000	'000	'000	%	%	%	%	'000
PERSONS											
August 2014	151.2	149.9	237.9	237.5	18.4	18.0	7.2	7.1	61.0	60.8	420.1
August 2015	155.8	157.5	241.3	242.4	16.3	16.2	6.3	6.3	60.9	61.2	422.7
2016											
August	153.0	153.7	236.9	236.8	16.7	18.3	6.6	7.2	59.7	60.0	425.2
September	152.2	153.9	237.5	239.9	16.6	16.5	6.5	6.4	59.7	60.3	425.4
October	151.5	150.4	238.0	236.3	16.4	16.2	6.4	6.4	59.8	59.3	425.7
November	151.0	149.2	238.6	239.0	16.0	16.1	6.3	6.3	59.8	59.9	425.9
December	150.7	152.1	239.0	238.9	15.6	16.1	6.1	6.3	59.7	59.8	426.2
2017											
January	150.9	150.5	239.6	240.4	15.2	14.3	6.0	5.6	59.7	59.7	426.5
February	151.6	151.5	240.5	239.5	15.1	14.8	5.9	5.8	59.9	59.6	426.9
March	152.5	152.4	241.7	241.3	15.1	15.3	5.9	6.0	60.1	60.1	427.2
April	153.4	152.4	243.0	242.4	15.2	15.2	5.9	5.9	60.4	60.3	427.4
May	154.1	155.6	244.2	245.1	15.4	15.9	6.0	6.1	60.7	61.0	427.6
June	154.6	156.0	245.2	247.0	15.6	14.8	6.0	5.6	61.0	61.2	427.8
July	155.0	153.9	245.9	244.9	15.8	16.5	6.0	6.3	61.2	61.1	428.0
August	155.1	154.4	246.5	245.8	15.9	15.8	6.1	6.0	61.3	61.1	428.2
MALES											
August 2014	100.2	98.6	126.2	125.9	10.8	10.6	7.9	7.7	66.1	65.8	207.4
August 2015	102.5	105.2	129.1	129.9	8.6	8.3	6.2	6.0	66.0	66.3	208.6
2016											
August	102.0	102.6	126.3	126.3	9.2	9.5	6.8	7.0	64.6	64.8	209.8
September	101.9	102.7	126.7	127.6	9.3	8.9	6.9	6.5	64.8	65.0	209.9
October	101.6	100.9	127.2	126.2	9.3	10.3	6.8	7.5	65.0	65.0	210.0
November	101.3	100.3	127.5	128.0	9.0	8.7	6.6	6.3	64.9	65.0	210.2
December	101.2	101.6	127.6	127.8	8.6	9.2	6.3	6.7	64.8	65.1	210.3
2017											
January	101.3	102.0	127.7	128.3	8.2	7.7	6.0	5.6	64.6	64.6	210.5
February	101.6	101.1	127.9	127.4	7.9	7.6	5.8	5.6	64.4	64.1	210.6
March	102.0	101.0	128.1	127.4	7.8	7.5	5.7	5.6	64.5	64.0	210.8
April	102.3	103.0	128.4	128.5	7.9	7.8	5.8	5.7	64.6	64.6	210.9
May	102.4	103.0	128.7	129.0	8.1	8.5	5.9	6.2	64.8	65.2	211.0
June	102.4	102.8	128.9	129.5	8.4	8.1	6.1	5.9	65.1	65.2	211.1
July	102.2	102.5	129.1	129.0	8.6	9.0	6.3	6.5	65.2	65.3	211.2
August	102.0	100.6	129.3	128.8	8.9	8.9	6.4	6.4	65.4	65.1	211.3
FEMALES											
August 2014	51.0	51.3	111.7	111.6	7.5	7.5	6.3	6.3	56.1	56.0	212.7
August 2015	53.3	52.3	112.2	112.4	7.7	7.9	6.4	6.6	56.0	56.2	214.1
2016											
August	51.0	51.2	110.6	110.4	7.5	8.8	6.3	7.4	54.8	55.4	215.4
September	50.3	51.2	110.7	112.3	7.3	7.6	6.2	6.3	54.8	55.6	215.5
October	49.9	49.5	110.9	110.0	7.1	5.9	6.0	5.1	54.7	53.8	215.6
November	49.6	48.8	111.1	111.0	7.0	7.4	5.9	6.2	54.7	54.9	215.8
December	49.5	50.5	111.4	111.2	7.0	6.9	5.9	5.9	54.8	54.7	215.9
2017											
January	49.6	48.4	111.9	112.1	7.0	6.7	5.9	5.6	55.0	55.0	216.1
February	50.0	50.3	112.7	112.2	7.2	7.3	6.0	6.1	55.4	55.2	216.3
March	50.5	51.4	113.6	113.9	7.3	7.8	6.1	6.4	55.9	56.2	216.4
April	51.1	49.4	114.6	113.9	7.4	7.4	6.0	6.1	56.3	56.0	216.5
May	51.7	52.6	115.5	116.1	7.3	7.5	6.0	6.0	56.7	57.0	216.6
June	52.3	53.2	116.2	117.5	7.3	6.7	5.9	5.4	57.0	57.3	216.7
July	52.8	51.5	116.8	115.9	7.2	7.5	5.8	6.1	57.2	56.9	216.8
August	53.1	53.8	117.2	117.0	7.1	6.9	5.7	5.6	57.3	57.1	217.0

	EMPLOYED FULL-TIME	EMPLOYED TOTAL	UNEMPLOYED TOTAL	UNEMPLOYMENT RATE	PARTICIPATION RATE	CIVILIAN POPULATION AGED 15 YEARS AND OVER
	<i>Trend</i>	<i>Trend</i>	<i>Trend</i>	<i>Trend</i>	<i>Trend</i>	<i>Original</i>
	'000	'000	'000	%	%	'000
PERSONS						
August 2014	106.1	128.9	5.8	4.3	72.9	184.9
August 2015	109.2	134.4	6.4	4.5	75.8	185.9
2016						
August	107.5	134.5	4.9	3.5	74.6	186.7
September	107.4	134.6	4.9	3.5	74.8	186.8
October	107.8	135.2	5.0	3.6	75.2	186.5
November	108.7	136.4	5.1	3.6	76.0	186.2
December	109.6	137.9	5.2	3.6	76.9	186.0
2017						
January	110.2	139.2	5.2	3.6	77.6	186.0
February	110.1	139.9	5.1	3.5	77.9	186.0
March	109.2	139.5	4.9	3.4	77.6	186.1
April	107.9	138.4	4.8	3.3	76.8	186.3
May	106.6	136.7	4.7	3.3	75.8	186.6
June	105.4	135.0	4.7	3.4	74.8	186.9
July	104.5	133.5	4.8	3.5	74.0	187.0
August	103.9	132.2	5.0	3.6	73.3	187.1
MALES						
August 2014	64.4	71.1	3.4	4.6	77.0	96.9
August 2015	65.5	74.1	3.4	4.4	79.6	97.4
2016						
August	63.8	73.5	3.1	4.1	78.6	97.5
September	64.0	73.8	3.1	4.0	78.9	97.5
October	64.3	74.2	3.1	4.0	79.4	97.3
November	65.0	74.9	3.0	3.8	80.1	97.2
December	65.7	75.8	2.9	3.7	81.0	97.0
2017						
January	66.1	76.6	2.7	3.4	81.8	96.9
February	66.1	77.0	2.6	3.2	82.1	96.9
March	65.6	76.8	2.4	3.1	81.7	96.9
April	64.9	76.0	2.4	3.0	80.8	97.1
May	64.0	75.0	2.4	3.2	79.6	97.2
June	63.2	73.8	2.6	3.4	78.5	97.4
July	62.5	72.9	2.7	3.6	77.6	97.5
August	61.9	72.0	2.9	3.9	76.8	97.6
FEMALES						
August 2014	41.7	57.8	2.3	3.9	68.4	88.0
August 2015	43.7	60.4	3.0	4.7	71.6	88.5
2016						
August	43.6	61.0	1.7	2.8	70.3	89.2
September	43.4	60.9	1.8	2.9	70.3	89.2
October	43.4	61.1	2.0	3.1	70.7	89.1
November	43.7	61.5	2.1	3.4	71.5	89.1
December	43.9	62.1	2.3	3.6	72.4	89.0
2017						
January	44.1	62.6	2.5	3.8	73.1	89.1
February	43.9	62.9	2.5	3.9	73.4	89.1
March	43.6	62.7	2.5	3.8	73.2	89.1
April	43.1	62.4	2.4	3.6	72.5	89.3
May	42.6	61.8	2.3	3.5	71.7	89.4
June	42.3	61.2	2.2	3.4	70.8	89.5
July	42.1	60.6	2.1	3.3	70.1	89.5
August	41.9	60.2	2.1	3.3	69.5	89.6

	EMPLOYED FULL-TIME	EMPLOYED TOTAL	UNEMPLOYED TOTAL	UNEMPLOYMENT RATE	PARTICIPATION RATE	CIVILIAN POPULATION AGED 15 YEARS AND OVER
	<i>Trend</i>	<i>Trend</i>	<i>Trend</i>	<i>Trend</i>	<i>Trend</i>	<i>Original</i>
	'000	'000	'000	%	%	'000
PERSONS						
August 2014	155.6	208.7	10.3	4.7	70.9	309.2
August 2015	153.4	209.7	10.8	4.9	70.3	313.4
2016						
August	158.1	215.0	7.9	3.6	70.3	317.0
September	158.2	215.3	8.0	3.6	70.4	317.5
October	158.0	215.6	8.1	3.6	70.4	317.9
November	157.7	215.8	8.2	3.7	70.4	318.3
December	157.4	215.9	8.2	3.7	70.3	318.7
2017						
January	156.9	216.0	8.1	3.6	70.2	319.2
February	156.4	216.0	8.2	3.6	70.1	319.7
March	156.1	216.0	8.4	3.7	70.1	320.2
April	156.2	216.0	8.8	3.9	70.2	320.4
May	156.6	216.1	9.4	4.2	70.3	320.7
June	157.1	216.4	10.0	4.4	70.5	320.9
July	157.6	216.8	10.4	4.6	70.7	321.4
August	158.0	217.1	10.7	4.7	70.8	321.8
MALES						
August 2014	89.7	107.7	4.6	4.1	74.5	150.8
August 2015	87.5	106.4	5.6	5.0	73.3	152.8
2016						
August	90.5	110.0	4.2	3.7	74.0	154.3
September	90.9	110.1	4.3	3.8	74.1	154.6
October	91.2	110.2	4.4	3.8	74.1	154.8
November	91.5	110.3	4.5	3.9	74.0	155.0
December	91.5	110.3	4.4	3.8	73.8	155.2
2017						
January	91.2	110.2	4.2	3.7	73.6	155.5
February	90.8	110.2	4.1	3.6	73.4	155.7
March	90.6	110.1	4.2	3.7	73.3	155.9
April	90.7	110.1	4.5	3.9	73.4	156.1
May	91.0	110.1	4.8	4.2	73.6	156.2
June	91.6	110.3	5.2	4.5	73.9	156.3
July	92.2	110.5	5.5	4.8	74.1	156.5
August	92.8	110.8	5.7	4.9	74.4	156.8
FEMALES						
August 2014	65.9	101.0	5.7	5.4	67.4	158.3
August 2015	65.9	103.2	5.2	4.8	67.5	160.6
2016						
August	67.7	105.0	3.7	3.4	66.9	162.7
September	67.3	105.2	3.7	3.4	66.9	162.9
October	66.8	105.4	3.7	3.4	66.9	163.1
November	66.3	105.5	3.8	3.4	66.9	163.3
December	65.9	105.6	3.8	3.5	66.9	163.5
2017						
January	65.7	105.8	3.9	3.5	67.0	163.7
February	65.6	105.9	4.0	3.6	67.0	164.0
March	65.5	105.9	4.2	3.8	67.0	164.3
April	65.5	105.9	4.4	4.0	67.1	164.4
May	65.6	106.0	4.6	4.1	67.2	164.5
June	65.5	106.1	4.7	4.3	67.3	164.6
July	65.4	106.2	4.9	4.4	67.4	164.8
August	65.3	106.3	4.9	4.5	67.4	165.1

	EMPLOYED			UNEMPLOYED				LABOUR FORCE	
	Full-time	Part-time	Total	Employment to population ratio	Looked for full-time work	Looked for part-time work only	Total	Unemployment rate	Participation rate
	'000	'000	'000	%	'000	'000	'000	%	%
PERSONS									
August 2014	875.2	917.1	1 792.1	57.5	162.7	121.4	286.7	13.8	66.6
August 2015	872.7	964.1	1 837.8	58.7	158.4	116.7	276.6	13.1	67.4
2016									
August	836.1	1 006.0	1 844.1	58.3	156.4	118.1	275.8	13.0	67.0
September	827.2	1 009.2	1 837.2	58.1	157.8	116.6	275.3	13.0	66.7
October	821.0	1 011.6	1 831.7	57.9	158.5	115.5	274.4	13.0	66.5
November	818.7	1 013.1	1 829.2	57.7	159.1	115.3	274.1	13.0	66.5
December	820.3	1 014.2	1 830.3	57.7	159.4	115.7	274.5	13.0	66.5
2017									
January	824.8	1 014.4	1 834.3	57.8	159.5	116.4	274.9	13.0	66.6
February	831.0	1 012.9	1 839.7	57.8	158.7	117.1	275.0	13.0	66.6
March	837.8	1 010.1	1 846.0	57.9	157.0	118.0	274.8	12.9	66.6
April	843.8	1 007.7	1 852.3	58.1	154.6	119.5	274.7	12.9	66.6
May	848.5	1 007.2	1 858.6	58.2	152.3	121.8	275.2	12.9	66.7
June	852.4	1 009.5	1 865.7	58.4	150.1	124.2	275.7	12.9	66.9
July	855.5	1 013.5	1 872.8	58.6	148.3	126.4	276.2	12.9	67.1
August	858.0	1 019.2	1 880.4	58.8	146.5	128.0	275.8	12.8	67.3
MALES									
August 2014	527.8	383.4	911.2	57.1	100.0	58.5	158.5	14.8	67.0
August 2015	524.0	409.6	933.5	58.2	96.2	57.5	153.7	14.1	67.8
2016									
August	492.0	445.4	937.4	57.9	96.2	56.1	152.3	14.0	67.4
September	486.9	446.3	933.2	57.7	97.7	55.8	153.5	14.1	67.1
October	483.4	446.1	929.4	57.4	98.7	55.8	154.5	14.3	66.9
November	483.3	444.9	928.1	57.3	99.0	56.4	155.4	14.3	66.9
December	487.2	443.5	930.8	57.4	98.2	57.6	155.8	14.3	67.0
2017									
January	494.3	442.1	936.4	57.6	96.2	59.1	155.4	14.2	67.2
February	502.8	440.4	943.2	58.0	93.8	60.5	154.3	14.1	67.5
March	510.1	438.6	948.7	58.2	91.6	61.3	152.8	13.9	67.6
April	514.3	437.5	951.8	58.4	90.2	61.5	151.7	13.8	67.7
May	515.4	438.1	953.5	58.4	89.7	61.6	151.4	13.7	67.7
June	514.9	440.0	954.9	58.5	89.7	61.9	151.5	13.7	67.8
July	513.6	443.1	956.6	58.6	89.8	62.3	152.1	13.7	67.9
August	511.6	446.9	958.5	58.7	90.0	62.3	152.3	13.7	68.0
FEMALES									
August 2014	347.4	533.7	881.1	57.9	62.7	62.9	125.6	12.5	66.2
August 2015	348.7	554.5	903.2	59.1	62.3	59.2	121.5	11.9	67.0
2016									
August	344.1	560.6	904.7	58.6	60.2	62.0	122.2	11.9	66.5
September	340.3	563.0	903.3	58.5	60.1	60.8	120.9	11.8	66.3
October	337.7	565.5	903.2	58.4	59.8	59.7	119.5	11.7	66.1
November	335.5	568.3	903.7	58.4	60.1	58.9	119.0	11.6	66.1
December	333.1	570.7	903.8	58.3	61.3	58.1	119.4	11.7	66.0
2017									
January	330.5	572.2	902.7	58.2	63.3	57.2	120.5	11.8	65.9
February	328.2	572.4	900.7	58.0	64.9	56.6	121.5	11.9	65.8
March	327.7	571.6	899.3	57.8	65.4	56.7	122.1	12.0	65.6
April	329.5	570.2	899.7	57.7	64.4	58.0	122.4	12.0	65.6
May	333.1	569.2	902.3	57.8	62.6	60.2	122.8	12.0	65.7
June	337.5	569.5	906.9	58.1	60.4	62.3	122.8	11.9	66.0
July	342.0	570.4	912.4	58.4	58.5	64.1	122.6	11.8	66.3
August	346.4	572.3	918.7	58.8	56.5	65.6	122.1	11.7	66.6

	EMPLOYED			Employment to population ratio %	UNEMPLOYED			LABOUR FORCE	
	Full-time	Part-time	Total		Looked for full-time work	Looked for part-time work only	Total	Unemployment rate	Participation rate
	'000	'000	'000		'000	'000	'000	'000	%
PERSONS									
August 2014	873.2	919.1	1 790.6	57.4	162.1	118.5	283.7	13.7	66.5
August 2015	866.0	961.9	1 827.9	58.3	156.8	119.6	277.0	13.2	67.1
2016									
August	841.2	1 007.7	1 849.3	58.5	157.5	115.8	273.5	12.9	67.1
September	822.8	1 022.1	1 841.8	58.1	156.3	112.7	271.3	12.8	66.7
October	824.9	999.8	1 828.9	57.7	155.4	108.4	263.3	12.6	65.9
November	810.6	1 002.5	1 820.3	57.5	162.5	123.7	288.1	13.7	66.3
December	818.6	1 018.3	1 823.8	57.6	165.7	114.5	278.0	13.1	66.9
2017									
January	827.2	1 029.3	1 847.6	58.2	150.3	113.6	261.7	12.3	66.8
February	826.4	1 010.8	1 832.8	57.6	158.4	120.5	278.3	13.1	66.5
March	852.7	997.8	1 849.6	58.0	157.9	122.8	281.5	13.2	66.8
April	831.2	1 024.1	1 856.5	58.2	167.0	108.8	273.4	12.8	66.8
May	856.4	998.5	1 857.6	58.2	142.2	120.6	269.1	12.7	66.4
June	848.6	996.2	1 857.0	58.2	149.3	129.7	278.6	13.1	66.6
July	860.1	1 010.7	1 869.2	58.5	145.3	130.1	276.7	12.9	67.2
August	855.2	1 040.5	1 896.0	59.3	150.7	125.4	276.8	12.7	67.9
MALES									
August 2014	527.1	386.2	913.2	57.2	98.5	55.7	154.2	14.4	66.9
August 2015	521.3	408.5	929.8	57.9	98.2	53.8	152.0	14.1	67.4
2016									
August	498.3	447.8	946.2	58.5	94.1	60.1	154.1	14.0	68.0
September	489.2	448.5	937.8	57.9	97.6	53.7	151.3	13.9	67.2
October	481.1	440.0	921.0	56.8	98.6	53.4	152.0	14.2	66.2
November	473.5	446.8	920.2	56.8	102.2	54.1	156.4	14.5	66.5
December	484.6	446.6	931.2	57.5	99.8	61.0	160.8	14.7	67.5
2017									
January	496.0	442.6	938.6	57.8	93.3	56.1	149.4	13.7	67.0
February	502.4	436.0	938.4	57.6	94.7	63.5	158.2	14.4	67.4
March	519.9	433.1	953.0	58.4	91.1	64.5	155.5	14.0	67.9
April	513.2	454.7	967.9	59.3	92.8	56.5	149.3	13.4	68.5
May	514.9	435.7	950.6	58.3	80.1	64.4	144.4	13.2	67.1
June	518.5	419.1	937.6	57.5	95.8	59.0	154.8	14.2	67.0
July	513.6	444.7	958.3	58.7	90.5	64.3	154.8	13.9	68.2
August	504.0	463.5	967.5	59.2	90.0	62.7	152.8	13.6	68.5
FEMALES									
August 2014	346.1	532.9	879.0	57.8	63.6	62.8	126.4	12.6	66.1
August 2015	344.7	553.4	898.1	58.7	58.6	65.8	124.4	12.2	66.9
2016									
August	342.9	559.9	902.8	58.5	63.5	55.7	119.2	11.7	66.2
September	333.6	573.5	907.1	58.6	58.7	58.9	117.6	11.5	66.2
October	343.8	559.8	903.7	58.4	56.7	55.0	111.7	11.0	65.6
November	337.2	555.8	892.9	57.7	60.2	69.6	129.8	12.7	66.1
December	334.1	571.7	905.8	58.6	65.9	53.5	119.4	11.6	66.3
2017									
January	331.2	586.7	917.9	59.2	57.0	57.5	114.5	11.1	66.6
February	324.0	574.8	898.8	57.8	63.7	57.0	120.7	11.8	65.6
March	332.8	564.7	897.5	57.6	66.8	58.4	125.2	12.2	65.6
April	317.9	569.4	887.4	56.9	74.2	52.3	126.5	12.5	65.0
May	341.5	562.9	904.3	58.0	62.1	56.2	118.4	11.6	65.6
June	330.1	577.1	907.2	58.2	53.4	70.8	124.2	12.0	66.2
July	346.5	566.0	912.5	58.4	54.7	65.8	120.5	11.7	66.2
August	351.2	577.0	928.2	59.3	60.6	62.7	123.3	11.7	67.2

	EMPLOYED				UNEMPLOYED				LABOUR FORCE		Not in the labour force (NILF)	Civ. pop. aged 15-24
	Full-time	Part-time	Total	Emp. to pop. ratio	Looked for full-time	Looked for part-time only	Total	Unemp. rate	Total	Part. rate		
	'000	'000	'000	%	'000	'000	'000	%	'000	%	'000	'000
ATTENDING FULL-TIME EDUCATION												
Persons												
August 2014	32.5	610.0	642.5	39.0	26.1	101.3	127.4	16.5	769.9	46.8	875.8	1 645.6
August 2015	44.9	617.7	662.6	39.5	19.5	98.1	117.6	15.1	780.2	46.5	897.6	1 677.8
August 2016	27.6	666.5	694.1	40.6	24.5	93.8	118.4	14.6	812.5	47.5	897.1	1 709.5
August 2017	51.5	672.5	724.0	41.5	24.9	103.9	128.8	15.1	852.8	48.9	891.6	1 744.3
Males												
August 2014	15.7	253.3	268.9	33.4	17.1	50.6	67.7	20.1	336.7	41.8	469.4	806.1
August 2015	24.7	255.9	280.6	34.2	9.0	42.9	52.0	15.6	332.6	40.6	487.0	819.6
August 2016	13.7	277.5	291.3	35.4	12.6	48.4	60.9	17.3	352.2	42.8	470.7	822.9
August 2017	25.7	302.4	328.1	38.0	15.1	51.0	66.1	16.8	394.2	45.7	469.0	863.3
Females												
August 2014	16.9	356.7	373.6	44.5	8.9	50.7	59.6	13.8	433.2	51.6	406.3	839.5
August 2015	20.2	361.8	382.0	44.5	10.5	55.2	65.7	14.7	447.6	52.2	410.6	858.2
August 2016	13.9	389.0	402.9	45.4	12.0	45.5	57.4	12.5	460.3	51.9	426.4	886.6
August 2017	25.8	370.1	395.9	44.9	9.7	52.9	62.6	13.7	458.6	52.0	422.5	881.1
NOT ATTENDING FULL-TIME EDUCATION												
Persons												
August 2014	804.0	318.1	1 122.0	76.2	113.8	19.1	132.9	10.6	1 255.0	85.3	216.6	1 471.5
August 2015	776.2	330.9	1 107.2	76.0	128.7	16.5	145.2	11.6	1 252.4	86.0	204.4	1 456.8
August 2016	769.4	327.4	1 096.8	75.5	124.6	17.1	141.7	11.4	1 238.5	85.2	214.9	1 453.4
August 2017	758.4	354.3	1 112.7	76.5	118.0	16.7	134.7	10.8	1 247.4	85.8	206.8	1 454.2
Males												
August 2014	484.8	134.9	619.7	78.5	71.1	8.3	79.4	11.4	699.1	88.5	90.4	789.5
August 2015	473.3	142.9	616.3	78.4	83.9	6.9	90.9	12.8	707.1	90.0	78.5	785.6
August 2016	461.7	160.2	621.9	78.2	76.5	7.5	84.0	11.9	705.9	88.7	89.8	795.7
August 2017	455.1	151.1	606.2	78.6	69.9	7.4	77.3	11.3	683.5	88.6	87.7	771.2
Females												
August 2014	319.1	183.2	502.3	73.7	42.7	10.8	53.5	9.6	555.8	81.5	126.2	682.0
August 2015	302.9	188.0	490.9	73.1	44.7	9.6	54.3	10.0	545.2	81.2	125.9	671.2
August 2016	307.6	167.2	474.9	72.2	48.1	9.6	57.7	10.8	532.6	81.0	125.0	657.7
August 2017	303.3	203.3	506.6	74.2	48.0	9.3	57.4	10.2	563.9	82.6	119.1	683.0
TOTAL												
Persons												
August 2014	836.5	928.0	1 764.5	56.6	139.9	120.4	260.3	12.9	2 024.8	65.0	1 092.4	3 117.2
August 2015	821.1	948.6	1 769.8	56.5	148.2	114.6	262.8	12.9	2 032.6	64.8	1 102.0	3 134.6
August 2016	797.0	994.0	1 790.9	56.6	149.2	110.9	260.1	12.7	2 051.0	64.8	1 111.9	3 162.9
August 2017	809.9	1 026.9	1 836.7	57.4	142.8	120.6	263.4	12.5	2 100.2	65.7	1 098.4	3 198.5
Males												
August 2014	500.5	388.2	888.7	55.7	88.2	58.9	147.1	14.2	1 035.8	64.9	559.9	1 595.6
August 2015	498.0	398.8	896.9	55.9	93.0	49.8	142.8	13.7	1 039.7	64.8	565.5	1 605.2
August 2016	475.5	437.7	913.2	56.4	89.0	55.8	144.9	13.7	1 058.0	65.4	560.5	1 618.6
August 2017	480.7	453.5	934.3	57.2	85.1	58.4	143.4	13.3	1 077.7	65.9	556.7	1 634.4
Females												
August 2014	336.0	539.9	875.9	57.6	51.7	61.5	113.2	11.4	989.0	65.0	532.5	1 521.5
August 2015	323.1	549.8	872.9	57.1	55.2	64.8	120.0	12.1	992.9	64.9	536.5	1 529.4
August 2016	321.5	556.3	877.8	56.8	60.1	55.0	115.2	11.6	992.9	64.3	551.4	1 544.3
August 2017	329.1	573.4	902.5	57.7	57.7	62.3	120.0	11.7	1 022.5	65.4	541.6	1 564.1

	EMPLOYED				UNEMPLOYED				LABOUR FORCE		Not in the labour force (NILF)	Civ. pop. aged 15-24
	Full- time	Part- time	Total	Emp. to pop. ratio	Looked for full- time	Looked for part- time only	Total	Unemp. rate	Total	Part. rate		
ATTENDING FULL-TIME EDUCATION												
New South Wales	20.9	218.6	239.5	41.7	12.9	27.4	40.2	14.4	279.7	48.7	294.4	574.1
Victoria	13.3	187.6	200.9	40.7	*2.8	29.9	32.7	14.0	233.7	47.4	259.6	493.3
Queensland	10.4	134.9	145.3	46.9	*3.7	24.5	28.2	16.2	173.4	56.0	136.3	309.7
South Australia	*1.2	42.2	43.4	36.2	*2.1	7.5	9.6	18.1	53.0	44.2	66.9	120.0
Western Australia	*3.3	59.4	62.7	37.1	*1.7	10.9	12.6	16.8	75.3	44.6	93.7	169.0
Tasmania	*0.4	11.0	11.3	37.0	*1.3	1.7	3.0	21.1	14.3	46.9	16.3	30.6
Northern Territory	0.7	4.7	5.4	41.8	*0.1	0.4	0.4	7.4	5.8	45.1	7.1	12.9
Australian Capital Territory	*1.3	14.1	15.5	44.5	*0.3	1.7	2.0	11.2	17.4	50.1	17.4	34.8
Australia	51.5	672.5	724.0	41.5	24.9	103.9	128.8	15.1	852.8	48.9	891.6	1 744.3
NOT ATTENDING FULL-TIME EDUCATION												
New South Wales	251.9	98.5	350.5	78.4	25.5	*4.3	29.8	7.8	380.3	85.1	66.5	446.8
Victoria	165.5	77.4	242.9	74.1	31.0	5.4	36.3	13.0	279.2	85.2	48.6	327.9
Queensland	170.2	91.7	261.9	76.2	29.1	*3.2	32.3	11.0	294.2	85.6	49.5	343.7
South Australia	43.4	28.9	72.3	75.1	10.1	*1.9	12.0	14.3	84.3	87.6	11.9	96.3
Western Australia	87.8	42.9	130.7	78.2	16.4	*1.1	17.5	11.8	148.2	88.7	18.8	167.1
Tasmania	18.8	7.7	26.5	75.8	3.6	*0.1	3.7	12.3	30.2	86.4	4.8	35.0
Northern Territory	10.9	3.4	14.3	71.8	1.3	0.4	1.7	10.5	16.0	80.2	3.9	20.0
Australian Capital Territory	9.9	3.8	13.7	77.8	*0.9	*0.3	*1.2	*8.3	14.9	84.8	2.7	17.6
Australia	758.4	354.3	1 112.7	76.5	118.0	16.7	134.7	10.8	1 247.4	85.8	206.8	1 454.2
TOTAL												
New South Wales	272.8	317.1	589.9	57.8	38.4	31.6	70.0	10.6	659.9	64.6	360.9	1 020.8
Victoria	178.8	265.1	443.8	54.1	33.8	35.3	69.1	13.5	512.9	62.5	308.2	821.1
Queensland	180.5	226.6	407.2	62.3	32.8	27.7	60.5	12.9	467.7	71.6	185.8	653.4
South Australia	44.7	71.0	115.7	53.5	12.2	9.4	21.7	15.8	137.4	63.5	78.9	216.3
Western Australia	91.1	102.3	193.4	57.5	18.2	12.0	30.2	13.5	223.6	66.5	112.5	336.1
Tasmania	19.2	18.6	37.8	57.7	4.9	1.8	6.7	15.1	44.5	67.9	21.0	65.6
Northern Territory	11.6	8.1	19.7	60.0	1.3	0.8	2.1	9.7	21.8	66.4	11.0	32.9
Australian Capital Territory	11.2	17.9	29.1	55.7	*1.2	2.0	3.2	9.9	32.3	61.8	20.0	52.4
Australia	809.9	1 026.9	1 836.7	57.4	142.8	120.6	263.4	12.5	2 100.2	65.7	1 098.4	3 198.5

* estimate is subject to sampling variability too high for most practical purposes

LABOUR FORCE STATUS IN AUGUST 2017

	<i>Employed full-time</i>	<i>Employed part-time</i>	<i>Employed total</i>	<i>Unemployed</i>	<i>Labour force</i>	<i>Not in the labour force (NILF)</i>	<i>Total</i>
<i>Labour force status in July 2017</i>	'000	'000	'000	'000	'000	'000	'000
PERSONS							
Matched sample							
Employed full-time	6 278.3	346.9	6 625.1	40.4	6 665.5	88.9	6 754.4
Employed part-time	352.0	2 568.5	2 920.5	49.1	2 969.6	167.3	3 136.9
Employed total	6 630.3	2 915.3	9 545.7	89.5	9 635.1	256.2	9 891.3
Unemployed	46.2	67.3	113.4	328.3	441.7	127.9	569.7
Labour force	6 676.5	2 982.6	9 659.1	417.8	10 076.9	384.1	10 461.0
Not in the labour force (NILF)	70.1	155.8	225.9	132.5	358.4	5 017.8	5 376.2
Total	6 746.5	3 138.4	9 885.0	550.3	10 435.3	5 401.9	15 837.2
Unmatched sample							
Unmatched in common sample	568.8	234.4	803.2	53.6	856.8	730.5	1 587.3
Incoming rotation group	1 011.9	495.1	1 507.0	110.3	1 617.3	872.2	2 489.6
Total	1 580.7	729.5	2 310.2	163.9	2 474.1	1 602.7	4 076.9
Civilian population aged 15 years and over	8 327.2	3 867.9	12 195.2	714.2	12 909.4	7 004.6	19 914.0
MALES							
Matched sample							
Employed full-time	4 101.8	134.8	4 236.5	26.3	4 262.8	48.4	4 311.2
Employed part-time	142.3	743.5	885.8	19.5	905.3	69.0	974.3
Employed total	4 244.1	878.3	5 122.3	45.8	5 168.1	117.4	5 285.6
Unemployed	28.6	31.8	60.4	188.0	248.4	64.5	312.9
Labour force	4 272.7	910.0	5 182.8	233.8	5 416.6	181.9	5 598.5
Not in the labour force (NILF)	36.0	57.9	93.9	61.0	154.9	2 064.8	2 219.7
Total	4 308.7	968.0	5 276.7	294.8	5 571.5	2 246.7	7 818.2
Unmatched sample							
Unmatched in common sample	346.8	84.3	431.1	28.8	459.9	305.9	765.8
Incoming rotation group	637.4	157.1	794.5	58.3	852.9	356.6	1 209.5
Total	984.2	241.5	1 225.6	87.1	1 312.8	662.5	1 975.3
Civilian population aged 15 years and over	5 292.9	1 209.4	6 502.3	381.9	6 884.2	2 909.2	9 793.4
FEMALES							
Matched sample							
Employed full-time	2 176.5	212.1	2 388.6	14.1	2 402.7	40.4	2 443.2
Employed part-time	209.7	1 825.0	2 034.7	29.6	2 064.3	98.3	2 162.5
Employed total	2 386.2	2 037.1	4 423.3	43.7	4 467.0	138.7	4 605.7
Unemployed	17.5	35.5	53.0	140.3	193.3	63.5	256.8
Labour force	2 403.8	2 072.6	4 476.3	184.0	4 660.3	202.2	4 862.5
Not in the labour force (NILF)	34.1	97.9	132.0	71.5	203.5	2 953.0	3 156.5
Total	2 437.8	2 170.5	4 608.3	255.5	4 863.8	3 155.2	8 019.0
Unmatched sample							
Unmatched in common sample	222.0	150.0	372.1	24.8	396.9	424.6	821.5
Incoming rotation group	374.5	338.0	712.5	52.0	764.5	515.6	1 280.1
Total	596.5	488.0	1 084.6	76.8	1 161.4	940.2	2 101.6
Civilian population aged 15 years and over	3 034.3	2 658.5	5 692.9	332.3	6 025.2	4 095.4	10 120.6

	EMPLOYED TOTAL		EMPLOYED FULL-TIME		EMPLOYED PART-TIME	
	<i>Trend</i>	<i>Seasonally adjusted</i>	<i>Trend</i>	<i>Seasonally adjusted</i>	<i>Trend</i>	<i>Seasonally adjusted</i>
	millions	millions	millions	millions	millions	millions
PERSONS						
August 2014	1 619.3	1 621.4	1 365.7	1 365.5	253.6	255.9
August 2015	1 648.8	1 642.7	1 382.8	1 377.0	265.9	265.7
2016						
August	1 663.2	1 663.0	1 385.1	1 386.6	278.1	276.4
September	1 666.9	1 664.1	1 387.6	1 381.8	279.3	282.3
October	1 670.0	1 673.3	1 389.7	1 394.8	280.3	278.4
November	1 672.0	1 670.1	1 391.1	1 389.2	280.9	280.9
December	1 673.2	1 676.5	1 391.8	1 395.6	281.4	280.9
2017						
January	1 674.6	1 681.8	1 392.7	1 398.7	282.0	283.1
February	1 677.4	1 668.0	1 394.8	1 385.2	282.6	282.8
March	1 681.9	1 678.4	1 398.7	1 396.8	283.2	281.6
April	1 687.8	1 679.7	1 404.3	1 396.0	283.6	283.7
May	1 694.2	1 705.6	1 410.4	1 420.6	283.8	285.0
June	1 700.0	1 707.8	1 416.1	1 423.3	283.8	284.4
July	1 704.6	1 699.3	1 420.8	1 416.2	283.8	283.1
August	1 708.6	1 705.4	1 424.8	1 422.3	283.8	283.1
MALES						
August 2014	986.9	986.7	910.9	909.3	75.9	77.4
August 2015	997.5	993.2	917.6	914.0	79.8	79.3
2016						
August	1 001.0	1 002.6	914.1	915.6	86.9	87.0
September	1 003.5	1 002.4	916.3	913.4	87.2	89.0
October	1 005.4	1 007.9	918.2	920.7	87.2	87.2
November	1 006.6	1 003.9	919.6	917.2	87.0	86.7
December	1 007.3	1 009.0	920.7	922.7	86.6	86.3
2017						
January	1 008.0	1 014.7	921.6	929.2	86.4	85.5
February	1 009.3	1 001.9	922.9	915.3	86.4	86.5
March	1 011.4	1 006.6	925.1	920.6	86.4	86.0
April	1 014.3	1 015.9	928.0	928.3	86.3	87.6
May	1 017.3	1 022.6	931.2	935.5	86.0	87.1
June	1 020.0	1 020.2	934.4	936.4	85.6	83.8
July	1 022.1	1 021.2	936.9	935.7	85.1	85.5
August	1 024.2	1 022.3	939.5	938.0	84.7	84.3
FEMALES						
August 2014	632.4	634.6	454.7	456.1	177.7	178.5
August 2015	651.3	649.5	465.2	463.0	186.1	186.5
2016						
August	662.3	660.4	471.0	471.0	191.2	189.4
September	663.5	661.7	471.3	468.4	192.2	193.2
October	664.6	665.4	471.5	474.1	193.1	191.3
November	665.4	666.2	471.5	472.0	194.0	194.1
December	665.9	667.6	471.1	472.9	194.8	194.6
2017						
January	666.7	667.1	471.1	469.5	195.6	197.6
February	668.1	666.1	471.8	469.8	196.3	196.3
March	670.4	671.9	473.6	476.2	196.8	195.7
April	673.5	663.8	476.3	467.6	197.2	196.2
May	676.9	683.0	479.2	485.1	197.7	197.9
June	680.0	687.6	481.8	486.9	198.3	200.6
July	682.5	678.1	483.9	480.5	198.7	197.6
August	684.4	683.1	485.3	484.4	199.1	198.8

MONTHLY HOURS WORKED IN ALL JOBS

	New South Wales	Victoria	Queensland	South Australia	Western Australia	Tasmania	Northern Territory	Australian Capital Territory	Australia
	millions	millions	millions	millions	millions	millions	millions	millions	millions
TREND									
August 2014	506.7	395.0	330.5	111.9	195.0	31.5	19.8	28.9	1 619.3
August 2015	525.6	405.9	334.6	107.9	193.9	31.9	20.4	28.5	1 648.8
2016									
August	531.0	420.4	334.6	109.3	186.3	31.6	20.6	29.4	1 663.2
September	531.8	422.3	334.6	109.7	186.8	31.7	20.6	29.4	1 666.9
October	532.3	423.9	334.4	110.2	187.6	31.7	20.6	29.4	1 670.0
November	532.0	425.2	334.1	110.5	188.5	31.8	20.6	29.4	1 672.0
December	531.2	426.1	334.1	110.6	189.3	31.9	20.7	29.3	1 673.2
2017									
January	530.7	426.8	334.5	110.7	189.9	32.0	20.8	29.3	1 674.6
February	530.9	427.6	335.4	110.9	190.3	32.2	20.7	29.2	1 677.4
March	532.4	428.7	336.9	111.2	190.7	32.3	20.6	29.2	1 681.9
April	534.7	429.9	338.5	111.5	191.2	32.4	20.3	29.3	1 687.8
May	537.0	431.4	340.1	112.0	191.8	32.5	20.0	29.3	1 694.2
June	539.0	432.9	341.3	112.5	192.5	32.6	19.7	29.4	1 700.0
July	540.5	434.0	342.4	112.9	193.3	32.7	19.5	29.4	1 704.6
August	541.6	434.8	343.3	113.3	194.0	32.8	19.3	29.4	1 708.6

SEASONALLY ADJUSTED

August 2014	508.1	392.8	332.6	113.0	195.1	31.3	np	np	1 621.4
August 2015	524.8	404.7	333.3	107.7	192.2	31.8	np	np	1 642.7
2016									
August	527.2	423.5	335.1	109.5	186.3	31.9	np	np	1 663.0
September	532.6	421.5	333.1	109.3	185.7	32.0	np	np	1 664.1
October	536.4	419.3	336.9	111.0	188.4	31.4	np	np	1 673.3
November	531.0	425.6	333.7	109.5	188.4	31.3	np	np	1 670.1
December	532.9	428.5	333.3	110.9	188.9	31.7	np	np	1 676.5
2017									
January	530.2	429.9	336.0	112.7	191.3	33.2	np	np	1 681.8
February	528.6	426.7	332.0	108.9	189.4	32.0	np	np	1 668.0
March	530.2	426.3	337.2	110.8	192.0	31.6	np	np	1 678.4
April	531.4	424.6	339.0	112.3	190.0	32.5	np	np	1 679.7
May	544.1	434.0	342.9	111.7	190.9	32.8	np	np	1 705.6
June	540.8	439.8	340.2	112.7	192.9	32.9	np	np	1 707.8
July	537.7	431.8	341.1	113.4	194.0	32.7	np	np	1 699.3
August	540.4	432.0	344.0	112.8	194.5	32.5	np	np	1 705.4

np not available for publication but included in totals where applicable, unless otherwise indicated

	UNDEREMPLOYED TOTAL			UNDEREMPLOYMENT RATE			UNDERUTILISATION RATE		
	<i>Trend</i>	<i>Seasonally adjusted</i>	<i>Original</i>	<i>Trend</i>	<i>Seasonally adjusted</i>	<i>Original</i>	<i>Trend</i>	<i>Seasonally adjusted</i>	<i>Original</i>
	'000	'000	'000	%	%	%	%	%	%
PERSONS									
August 2013	932.0	951.0	917.3	7.7	7.8	7.6	13.5	13.8	13.3
August 2014	1 008.0	1 015.4	1 041.3	8.2	8.3	8.5	14.4	14.4	14.4
August 2015	1 049.9	1 042.7	1 021.9	8.4	8.3	8.2	14.3	14.4	14.3
2016									
February	1 056.4	1 041.3	1 041.3	8.4	8.2	8.2	14.1	13.9	14.4
May	1 065.2	1 063.2	1 043.7	8.4	8.4	8.2	14.1	14.2	13.9
August	1 077.6	1 103.1	1 082.4	8.5	8.7	8.6	14.2	14.3	14.2
November	1 096.8	1 059.1	1 090.0	8.6	8.3	8.6	14.4	14.1	14.0
2017									
February	1 112.7	1 136.4	1 135.4	8.7	8.9	8.8	14.4	14.7	15.2
May	1 124.3	1 129.4	1 107.4	8.7	8.8	8.6	14.4	14.3	14.0
August	1 129.8	1 115.3	1 091.0	8.7	8.6	8.5	14.2	14.1	14.0
MALES									
August 2013	385.3	391.5	383.3	5.9	6.0	5.9	11.7	11.9	11.6
August 2014	423.9	429.3	440.1	6.4	6.5	6.6	12.5	12.5	12.6
August 2015	435.7	431.9	416.3	6.5	6.4	6.2	12.4	12.5	12.5
2016									
February	452.3	446.2	444.6	6.7	6.6	6.5	12.3	12.2	12.5
May	462.3	460.2	450.7	6.8	6.8	6.6	12.4	12.5	12.2
August	467.2	484.2	467.4	6.9	7.1	6.9	12.5	12.6	12.6
November	469.2	449.9	456.6	6.9	6.6	6.7	12.6	12.3	12.1
2017									
February	470.3	478.6	475.9	6.9	7.0	6.9	12.5	12.7	13.0
May	473.9	474.7	463.8	6.9	6.9	6.7	12.4	12.4	12.1
August	478.7	475.1	459.2	6.9	6.8	6.7	12.3	12.3	12.2
FEMALES									
August 2013	546.6	559.5	533.9	9.8	10.0	9.7	15.6	15.9	15.2
August 2014	584.1	586.2	601.2	10.4	10.4	10.6	16.6	16.6	16.5
August 2015	614.1	610.8	605.5	10.6	10.5	10.5	16.6	16.7	16.5
2016									
February	604.0	595.1	596.7	10.3	10.1	10.1	16.2	16.0	16.5
May	602.9	603.0	593.0	10.2	10.3	10.1	16.1	16.1	15.8
August	610.3	619.0	615.0	10.4	10.5	10.5	16.2	16.3	16.1
November	627.7	609.2	633.5	10.6	10.3	10.7	16.5	16.2	16.1
2017									
February	642.5	657.9	659.5	10.8	11.1	11.0	16.6	17.1	17.6
May	650.4	654.8	643.6	10.8	10.9	10.7	16.6	16.6	16.3
August	651.0	640.2	631.8	10.8	10.5	10.5	16.4	16.2	16.0

	UNDEREMPLOYED TOTAL			UNDEREMPLOYMENT RATE			UNDERUTILISATION RATE		
	<i>Trend</i>	<i>Seasonally Adjusted</i>	<i>Original</i>	<i>Trend</i>	<i>Seasonally Adjusted</i>	<i>Original</i>	<i>Trend</i>	<i>Seasonally Adjusted</i>	<i>Original</i>
	'000	'000	'000	%	%	%	%	%	%
PERSONS									
New South Wales	315.2	309.3	312.7	7.7	7.6	7.7	12.6	12.4	12.7
Victoria	290.2	292.0	286.6	8.6	8.6	8.6	14.8	14.9	14.7
Queensland	233.3	228.7	227.4	9.1	8.8	8.8	14.9	14.4	14.5
South Australia	87.2	86.4	84.1	9.9	9.9	9.7	16.0	15.5	15.1
Western Australia	145.7	139.9	131.5	10.1	9.6	9.2	15.4	15.2	14.9
Tasmania	28.4	30.0	28.9	10.9	11.5	11.1	17.0	17.6	17.3
Northern Territory	6.4	np	5.7	4.6	np	4.1	7.8	np	8.4
Australian Capital Territory	14.4	np	14.2	6.3	np	6.3	10.2	np	10.4
Australia	1 129.8	1 115.3	1 091.0	8.7	8.6	8.5	14.2	14.1	14.0
MALES									
New South Wales	129.3	126.3	127.8	5.9	5.8	5.9	11.0	10.9	11.2
Victoria	130.0	132.7	125.8	7.2	7.4	7.0	13.0	13.1	12.8
Queensland	96.1	96.5	93.4	7.1	7.1	6.9	12.8	12.4	12.4
South Australia	35.8	36.1	33.6	7.7	7.8	7.2	13.2	12.6	12.5
Western Australia	64.7	60.8	59.7	8.2	7.7	7.6	13.3	13.1	13.5
Tasmania	11.6	12.6	10.8	8.5	9.1	7.9	15.1	16.0	14.7
Northern Territory	3.6	np	2.8	4.6	np	3.7	8.1	np	8.9
Australian Capital Territory	5.9	np	5.3	5.1	np	4.6	9.5	np	9.3
<i>Australia</i>	<i>478.7</i>	<i>475.1</i>	<i>459.2</i>	<i>6.9</i>	<i>6.8</i>	<i>6.7</i>	<i>12.3</i>	<i>12.3</i>	<i>12.2</i>
FEMALES									
New South Wales	185.9	183.1	184.9	9.8	9.7	9.8	14.5	14.2	14.4
Victoria	160.2	159.3	160.8	10.2	10.1	10.3	16.9	17.0	16.8
Queensland	137.2	132.2	133.9	11.2	10.7	11.0	17.2	16.6	16.7
South Australia	51.4	50.3	50.5	12.5	12.2	12.4	19.1	18.7	18.1
Western Australia	81.1	79.1	71.8	12.3	11.9	11.0	18.0	17.7	16.6
Tasmania	16.8	17.4	18.1	13.6	14.2	14.7	19.2	19.4	20.2
Northern Territory	2.8	np	2.8	4.5	np	4.5	7.5	np	7.9
Australian Capital Territory	8.4	np	8.9	7.5	np	8.0	10.9	np	11.5
<i>Australia</i>	<i>651.0</i>	<i>640.2</i>	<i>631.8</i>	<i>10.8</i>	<i>10.5</i>	<i>10.5</i>	<i>16.4</i>	<i>16.2</i>	<i>16.0</i>

np not available for publication but included in totals where applicable, unless otherwise indicated

WHAT IF...? REVISIONS TO TREND ESTIMATES

EFFECT OF NEW SEASONALLY ADJUSTED ESTIMATES ON TREND ESTIMATES

TREND REVISIONS

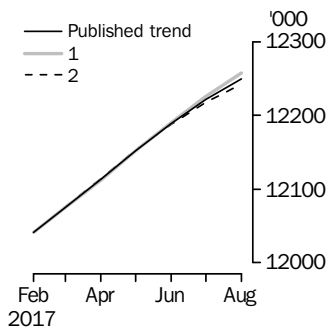
Each time new seasonally adjusted estimates become available, trend estimates are revised. This revision is a combined result of the concurrent seasonal adjustment process and the application of surrogates of the Henderson average to the seasonally adjusted series (see paragraphs 28 to 37 of the Explanatory Notes).

The examples in the tables below show two illustrative scenarios and the consequent revisions to previous trend estimates of employment and the unemployment rate. The revisions in the scenarios are due to the use of surrogates of the Henderson average, as the impact of revision of seasonally adjusted estimates can not be estimated in advance.

- (1) The September seasonally adjusted estimate is *higher* than August by:
 - 0.22% for employment
 - 2.26% for the unemployment rate
- (2) The September seasonally adjusted estimate is *lower* than August by:
 - 0.22% for employment
 - 2.26% for the unemployment rate

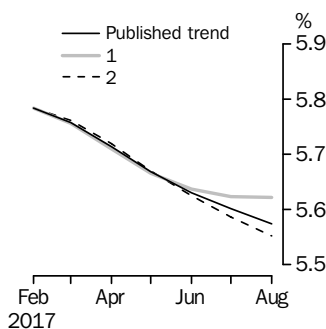
The percentage changes of 0.22% and 2.26% represent the average absolute monthly percentage changes in employment and the unemployment rate respectively. Estimates in the graphs have been calculated using unrounded estimates, and may be different from, but more accurate than, rounded estimates depicted in the corresponding table.

EMPLOYMENT



	Trend as published	WHAT IF NEXT MONTH'S SEASONALLY ADJUSTED ESTIMATE IS:	
		(1) 12 296.0 i.e. rises by 0.22%	(2) 12 242.0 i.e. falls by 0.22%
2017			
May	12 152.3	12 151.8	12 152.7
June	12 189.4	12 190.6	12 188.2
July	12 222.4	12 226.1	12 218.1
August	12 249.5	12 257.8	12 242.7

UNEMPLOYMENT RATE



	Trend as published	WHAT IF NEXT MONTH'S SEASONALLY ADJUSTED ESTIMATE IS:	
		(1) 5.7 i.e. rises by 2.26%	(2) 5.5 i.e. falls by 2.26%
2017			
May	5.7	5.7	5.7
June	5.6	5.6	5.6
July	5.6	5.6	5.6
August	5.6	5.6	5.6

EXPLANATORY NOTES

INTRODUCTION

1 This publication contains estimates of the civilian labour force derived from the Labour Force Survey component of the Monthly Population Survey. The full time series for estimates from this publication are also available electronically. More detailed estimates are released one week after this publication in various electronic formats – see *Labour Force, Australia, Detailed – Electronic Delivery* (cat. no. 6291.0.55.001) and *Labour Force, Australia, Detailed, Quarterly* (cat. no. 6291.0.55.003).

CONCEPTS, SOURCES AND METHODS

2 The conceptual framework used in Australia's Labour Force Survey aligns closely with the standards and guidelines set out in Resolutions of International Conferences of Labour Statisticians. Descriptions of the underlying concepts and structure of Australia's labour force statistics, and the sources and methods used in compiling the estimates, are presented in *Labour Statistics: Concepts, Sources and Methods* (cat. no. 6102.0.55.001) which is available on the ABS website <<http://www.abs.gov.au>>.

LABOUR FORCE SURVEY

3 The Labour Force Survey is based on a multi-stage area sample of private dwellings (currently approximately 26,000 houses, flats, etc.), a list sample of non-private dwellings (hotels, motels, etc.), and covers approximately 0.32% of the civilian population of Australia aged 15 years and over.

4 Information is obtained from the occupants of selected dwellings by specially trained interviewers using computer-assisted interviewing, or self-completion online.

5 Households selected for the Labour Force Survey are interviewed each month for eight months, with one-eighth of the sample being replaced each month. The first interview is generally conducted face-to-face. Subsequent interviews are conducted by telephone (if acceptable to the respondent).

6 From December 2012 to April 2013, the ABS conducted a trial of online electronic data collection. Respondents in a single rotation group (i.e. one-eighth of the survey sample) were offered the option of self completing their labour force survey questionnaire online instead of via a face-to-face or telephone interview. From May 2013, the ABS expanded the offer of online electronic collection to 50% of each new incoming rotation group. For more information see the article in the April 2013 issue of this publication. From September 2013, online electronic collection has been offered to 100% of private dwellings in each incoming rotation group. From April 2014, 100% of private dwellings are being offered online electronic collection.

7 The interviews are generally conducted during the two weeks beginning on the Sunday between the 5th and 11th of each month. The information obtained relates to the week before the interview (i.e. the reference week). Each year, to deal with the operational difficulties involved with collecting and processing the Labour Force Survey around the Christmas and New Year holiday period, interviews for December start four weeks after November interviews start (i.e. between the 3rd and 9th December), and January interviews start five weeks after December interviews start. As a result, January interviewing may commence as early as the 7th or as late as the 13th, depending on the year. Occasionally, circumstances that present significant operational difficulties for survey collection can result in a change to the normal pattern for the start of interviewing.

8 Estimates from the Labour Force Survey are usually published first in this publication 39 days after the commencement of interviews for that month, with the exception of estimates for each December which are usually published 46 days after the commencement of interviews.

EXPLANATORY NOTES *continued*

SCOPE OF SURVEY

9 The Labour Force Survey includes all persons aged 15 years and over except members of the permanent defence forces, certain diplomatic personnel of overseas governments customarily excluded from census and estimated population counts, overseas residents in Australia, and members of non-Australian defence forces (and their dependants) stationed in Australia.

COVERAGE

10 In the Labour Force Survey, coverage rules are applied which aim to ensure that each person is associated with only one dwelling, and hence has only one chance of selection. The coverage rules are necessarily a balance between theoretical and operational considerations. Nevertheless, the chance of a person being enumerated at two separate dwellings in the survey is considered to be negligible.

POPULATION BENCHMARKS

11 The Labour Force Survey estimates are calculated in such a way as to add to independent estimates of the civilian population aged 15 years and over (population benchmarks). These population benchmarks are based on the most recently released estimates of Final, Revised and Preliminary quarterly Estimated Resident Population (ERP). For information on the methodology used to produce the ERP see *Australian Demographic Statistics* (cat. no. 3101.0). Since the most recently released ERP estimates lag the current time period for Labour Force estimates by nine months, the Labour Force population benchmarks are created by projecting forward three quarters past the most recently released quarterly ERP estimates. The projection is based on the historical pattern of each population component – births, deaths, interstate migration and net overseas migration (NOM). Projected estimates of NOM are supplemented with other data sources to better forecast population changes in the short-term. The main data source is the forecasts published by the Department of Immigration & Border Protection in the publication *The Outlook for Net Overseas Migration*.

12 Commencing in March 2010, the ERP series has been revised twice-yearly, in the March and September quarter issues of *Australian Demographic Statistics* (cat. no. 3101.0). This biannual revision cycle incorporates more up to date information available for NOM. This updated information is included in the population benchmarks used in creating the Labour Force estimates when they are rebenchmarked quarterly.

13 Every five years, the ERP series are revised to incorporate additional information available from the latest Census of Population and Housing (Census). Labour Force Survey population benchmarks, and the estimates, are revised following this five-yearly revision in the ERP. The process of incorporating the revised population benchmarks is referred to as 'rebasings'. From the January 2014 issue of this publication, labour force estimates have been compiled using population benchmarks based on the results of the 2011 Census. Revisions were made to historical Labour Force estimates from June 2006 to December 2013. In addition, estimates from July 1991 to May 2006 were revised to reflect population benchmarks based on ERP revised following the 2011 Census. The next rebasing based on the Census will be following the release of the 2016 Census-based ERP estimates, which will incorporate revisions back five years. For more information on revised ERP estimates, refer to the June 2012 issue of *Australian Demographic Statistics* (cat. no. 3101.0) released in December 2012.

14 In between Censuses, the ABS revises the Labour Force population benchmarks using the latest ERP according to the paragraphs above. These were introduced in the July 2010, November 2012 and April 2013 issues. The revisions planned for the October 2013, April 2014 and November 2014 issues were not implemented (see What's New in the Labour Force in the September 2013 issue and Changes in this Issue in the October 2014 issue of this publication). From the February 2015 issue, rebenchmarking will be undertaken quarterly in the February, May, August and November issues, apart

EXPLANATORY NOTES *continued*

POPULATION BENCHMARKS

continued

from May 2015. For more information, refer to the article Rebenchmarking of Labour Force Series in the February 2015 issue of this publication.

ESTIMATION METHOD

15 The estimation method used in the Labour Force Survey is Composite Estimation, which was introduced in May 2007. In January 2014 composite estimation was applied to all estimates from July 1991 as part of the 2011 Census rebenchmarking. Composite Estimation combines data collected in the previous six months with current month's data to produce the current month's estimates, thereby exploiting the high correlation between overlapping samples across months in the Labour Force Survey. The Composite Estimator combines the previous and current months' data by applying different factors according to length of time in the survey. After these factors are applied, the seven months of data are weighted to align with current month population benchmarks. For details see *Information Paper: Forthcoming Changes to Labour Force Statistics, 2007* (cat. no. 6292.0).

COMPARABILITY OF SERIES

16 From April 1986, the definition of employed persons was changed to include persons who worked without pay between 1 and 14 hours per week in a family business or on a farm (i.e. contributing family workers). For further information, see paragraphs 22 and 23 of the Explanatory Notes in the February 2003 issue of *Labour Force, Australia* (cat. no. 6203.0).

17 The ABS introduced telephone interviewing into the Labour Force Survey in August 1996. Implementation was phased in for each new sample group from August 1996 to February 1997. During the period of implementation, the new method produced different estimates than would have been obtained under the old methodology. The effect dissipated over the final months of implementation and was no longer discernible from February 1997. The estimates for February 1997 and onwards are directly comparable to estimates for periods prior to August 1996. For further details, see the feature article in the June 1997 issue of *Labour Force, Australia* (cat. no. 6203.0).

18 From April 2001 the Labour Force Survey was conducted using a redesigned questionnaire containing additional data items and some minor definitional changes. The definition of unemployed persons was changed to include all persons who were waiting to start work and were available to start in the reference week. This change was introduced in February 2004, when historical unit record data were revised from April 2001 to January 2004. This revision created a small trend break at April 2001 in unemployed persons and unemployment rate series. For further details, see *Information Paper: Forthcoming Changes to Labour Force Statistics, 2003* (cat. no. 6292.0), released in December 2003. From July 2014 the Labour Force Survey questionnaire was further redesigned and definitional changes made to active job search steps and duration of job search. For further details, see the Glossary and *Information Paper: Forthcoming Changes to Labour Force Statistics, June 2014* (cat. no. 6292.0), released in October 2014.

19 Core labour force series were revised in April 2001 for the period April 1986 to March 2001 for the remaining definitional changes introduced with the redesigned questionnaire, to reduce the impact of the changes on labour force series. For further details, see *Information Paper: Implementing the Redesigned Labour Force Survey Questionnaire* (cat. no. 6295.0) and the 2004 issue of *Information Paper: Questionnaires Used in the Labour Force Survey* (cat. no. 6232.0).

20 In May 2007, an improved method of estimation, known as composite estimation, was introduced into the Labour Force Survey. In introducing this change, the ABS revised unit record data from April 2001 to April 2007 based on the new estimation method. No change was identified in the trend breaks in the unemployed persons and unemployment rate series which arose with the introduction of a redesigned survey form in April 2001 (as noted above in paragraph 18). In January 2014 composite estimation

EXPLANATORY NOTES *continued*

COMPARABILITY OF SERIES

continued

was applied to all estimates from July 1991 as part of the 2011 Census rebenchmarking. For further details, see *Information Paper: Forthcoming Changes to Labour Force Statistics, 2007* (cat. no. 6292.0).

21 As one of a range of ABS savings initiatives for the 2008–09 financial year, there was a 24% reduction in the LFS sample size for the period July 2008 to August 2009, relative to the June 2008 sample size. The sample reduction was reversed from September 2009 to December 2009, with December 2009 estimates being the first produced under the fully reinstated sample.

LABOUR FORCE SURVEY SAMPLE

22 The current Labour Force Survey sample has been selected using information collected in the 2011 Census of Population and Housing.

23 The sample was introduced over four months – May 2013 to August 2013. Two rotation groups (i.e. one-quarter of the survey sample) were introduced each month. During the sample phase-in, the increased sample rotation had an impact on the quality of estimates. Movement standard errors increased by approximately 10%, representing, for example, an increase on the standard error on the Australian monthly change in employment for May 2013 from 27,000 to approximately 29,700.

24 Due to the use of composite estimation, there was a marginal impact on the quality of level estimates. Gross Flows analysis were impacted by the sample phase-in with between 60% to 70% of the sample available for matching between the current and previous months instead of the usual 80%. After full transition to the new sample, the quality of level and movement estimates is at the level designed for under the 2011 sample design and are of similar quality as the 2006 sample design. For further details, see *Information Paper: Labour Force Survey Sample Design* (cat. no. 6269.0) released on 30 May 2013.

RELIABILITY OF ESTIMATES

25 Two types of error are possible in an estimate based on a sample survey: sampling error and non-sampling error.

26 Sampling error occurs because a sample, rather than the entire population, is surveyed. One measure of the likely difference resulting from not including all dwellings in the survey is given by the standard error. There are about two chances in three that a sample estimate will differ by less than one standard error from the figure that would have been obtained if all dwellings had been included in the survey, and about nineteen chances in twenty that the difference will be less than two standard errors. Standard errors of key estimates for the latest month and of movements since the previous month of these estimates are shown in the standard errors section of this publication. Standard errors for other estimates and other movements may be calculated by using the spreadsheet contained in *Labour Force Survey Standard Errors, Data Cube* (cat. no. 6298.0.55.001) which is available free of charge on the ABS website <<http://www.abs.gov.au>>.

27 Non-sampling error arises from inaccuracies in collecting, recording and processing the data. Every effort is made to minimise reporting error by the careful design of questionnaires, intensive training and supervision of interviewers, and efficient data processing procedures. Non-sampling error also arises because information cannot be obtained from all persons selected in the survey. The Australian Labour Force Survey receives a higher level of co-operation from individuals in selected dwellings compared to other countries, with the average response rate over the past 3 years being 93 per cent, and the average rate over the past year being 92.5 per cent (to the nearest quarter of a per cent, in rounded terms). See Glossary for definition of response rate.

EXPLANATORY NOTES *continued*

SEASONAL ADJUSTMENT AND TREND ESTIMATION

28 Any original time series can be thought of as a combination of three broad and distinctly different types of behaviour, each representing the impact of certain types of real world events on the information being collected: systematic calendar related events, short-term irregular fluctuations and long-term cyclical behaviour. A multiplicative decomposition model is applied in the seasonal adjustment of Labour Force Time Series, where the original time series (O) is considered as the product of the underlying trend (T), a systematic calendar related or seasonal component (S) and an irregular component (I). This can be expressed as $O = T * S * I$. The contributions of each of these behaviours varies from series to series, as well as throughout time for a given series, depending on the nature of the interactions of real world events and the data of interest.

29 Seasonal adjustment is a statistical technique that attempts to measure and remove the effects of systematic calendar related patterns including seasonal variation to reveal how a series changes from period to period. Seasonal adjustment does not aim to remove the irregular or non-seasonal influences which may be present in any particular month. This means that month-to-month movements of the seasonally adjusted estimates may not be reliable indicators of trend behaviour.

30 The Labour Force Survey uses the concurrent seasonal adjustment method to derive seasonal factors. Concurrent seasonal adjustment uses data up to the current month to estimate seasonal factors for the current and all previous months. This process can result in revisions each month to estimates for earlier periods. However, in most instances, the only noticeable revisions will be to the seasonally adjusted estimates for the previous month and one year prior to the current month. From the March 2015 issue of this publication, the effects of supplementary surveys are removed prior to the estimation of seasonal factors for key Labour Force series from February 1978 onwards. While this methodology has addressed short term volatility in the seasonally adjusted series arising from changes to the timing and content of the supplementary survey program, in general prior corrections and resulting changed seasonal patterns can be identified and measured to a more reliable degree of certainty after three successive observations (in this case after three years). For further details refer to the October and December 2014 issues of this publication.

31 The revision properties of the seasonally adjusted and trend estimates can be improved by the use of Autoregressive Integrated Moving Average (ARIMA) modelling. ARIMA modelling relies on the characteristics of the series being analysed to project future period data. The projected values are temporary, intermediate values, that are only used internally to improve the estimation of the seasonal factors. The projected data do not affect the original estimates and are discarded at the end of the seasonal adjustment process. The Labour Force Survey uses an ARIMA model for the majority of the individual time series. The ARIMA model is assessed as part of the annual reanalysis. For further details, see the feature article in the October 2004 issue of *Australian Economic Indicators* (cat. no. 1350.0).

32 Seasonal adjustment is able to remove the effect of events which occur at the same time in the survey every year. However, there are some events, like holidays, which are not always at the same time in the survey cycle or which are not at the same time across Australia. The effects of these types of events on Labour Force Survey estimates cannot in all cases be removed, because the pattern of their effects cannot be determined. However, two events for which adjustment is made in the seasonally adjusted series are the January interview start date and the timing of Easter. For further details, see *Information Paper: Forthcoming Changes to Labour Force Statistics* (cat. no. 6292.0) released in December 2003.

EXPLANATORY NOTES *continued*

SEASONAL ADJUSTMENT AND TREND ESTIMATION *continued*

33 While seasonal factors for the complete time series are estimated each month, they will continue to be reviewed annually at a more detailed level to take into account each additional year's original data. This annual review will not normally result in significant changes to published estimates. The review is usually conducted early each year with the results released in this publication shortly thereafter.

34 The smoothing of seasonally adjusted series to produce 'trend' series reduces the impact of the irregular component of the seasonally adjusted series. These trend estimates are derived by applying a 13-term Henderson-weighted moving average to all months except the last six. The last six monthly trend estimates are obtained by applying surrogates of the Henderson average to the seasonally adjusted series. Trend estimates are used to analyse the underlying behaviour of a series over time.

35 While this smoothing technique enables estimates to be produced for the latest month, it does result in revisions in addition to those caused by the revision of seasonally adjusted estimates. Generally, revisions due to the use of surrogates of the Henderson average become smaller, and after three months have a negligible impact on the series.

36 Trend estimates are published for the Northern Territory in table 10 and for the Australian Capital Territory in table 11. Unadjusted series for the two Territories have shown, historically, a high degree of variability, which can lead to considerable revisions to the seasonally adjusted estimates each month when seasonal factors are estimated. For this reason, seasonally adjusted estimates are not currently published for the two Territories. In addition, caution should be exercised in the interpretation of trend estimates for the two Territories, particularly for the three most recent months, where revisions may be relatively large.

37 For further information, see *A Guide to Interpreting Time Series – Monitoring Trends* (cat. no. 1349.0).

RELATED PUBLICATIONS

38 Users may also wish to refer to the following publications and other data products that are available free of charge from the ABS website:

- *Labour Force Survey Standard Products and Data Item Guide* (cat. no. 6103.0)
- *Labour Force, Australia, Detailed* (cat. no. 6291.0.55.001)
- *Labour Force, Australia, Detailed Quarterly* (cat. no. 6291.0.55.003)
- *Labour Force Survey Standard Errors, Data Cube* (cat. no. 6298.0.55.001)
- *Labour force, Australia - Rebenchmarked Estimates* (cat. no. 6202.0.55.003)
- *Labour Statistics: Concepts, Sources and Methods* (cat. no. 6102.0.55.001)
- *Australian Demographic Statistics* (cat. no. 3101.0)
- *Australian Labour Market Statistics* (cat. no. 6105.0)
- *Labour Force, Australia* (cat. no. 6203.0)
- *Information Paper: Outcomes of the Labour Household Surveys Content Review* (cat. no. 6107.0)
- *Information Paper: Questionnaires Used in the Labour Force Survey* (cat. no. 6232.0)
- *Information Paper: Regional Labour Force Statistics* (cat. no. 6262.0)
- *Information Paper: Labour Force Sample Design* (cat. no. 6269.0)
- *Information Paper: Forthcoming Changes to Labour Force Statistics* (cat. no. 6292.0)
- *Information Paper: Expansion of Hours Worked Estimates from the Labour Force Survey* (cat. no. 6290.0.55.001)

39 Current publications and other products released by the ABS are listed on the ABS website <<http://www.abs.gov.au>>. The ABS also issues a daily Release Advice on the website which details products to be released in the week ahead.

EXPLANATORY NOTES *continued*

DATA AVAILABLE ON REQUEST

40 As well as the statistics included in this and related publications, the ABS may have other relevant data available. Inquiries should be made to the Labour Force contact officer on (02) 6252 6525, email <labourforce@abs.gov.au> or to any ABS office.

EFFECTS OF ROUNDING

41 Estimates have been rounded and discrepancies may occur between sums of the component items and totals. Estimates of movement shown in this publication are obtained by taking the difference of unrounded estimates. The movement estimate is then rounded. Where a discrepancy occurs between the reported movement and the difference of the rounded estimates, the reported movement will be more accurate.

EXPLANATORY NOTES *continued*

SYMBOLS AND ABBREVIATIONS

42 SYMBOLS AND ABBREVIATIONS

<i>Symbol</i>	<i>Definition</i>
'000	thousands
%	percentage
ABS	Australian Bureau of Statistics
CAI	computer assisted interviewing
cat. no.	catalogue number
Civ. pop.	civilian population
ERP	estimated resident population
Emp. to pop. ratio	employment to population ratio
f/t	full time
LFS	Labour Force Survey
NILF	not in the Labour Force
Part. rate	participation rate
p/t	part time
pts	percentage points
Seas adj.	seasonally adjusted
TAFE	Technical and Further Education
Unemp. rate	unemployment rate

STANDARD ERRORS

STANDARD ERRORS

The estimates in this publication are based on information gained from the occupants of a sample survey of dwellings. Because the entire population is not surveyed, the published original, seasonally adjusted and trend estimates are subject to sampling error. The most common way of quantifying such sampling error is to calculate the standard error for the published estimate or statistic. For more information, see paragraphs 25 to 27 of the Explanatory Notes.

LEVEL ESTIMATES

To illustrate, let us say the published level estimate for employed persons aged 15–19 years is 700,000 and the associated standard error is 9,000. The standard error is then used to interpret the level estimate of 700,000. For instance, the standard error of 9,000 indicates that:

- There are approximately two chances in three that the real value falls within the range 691,000 to 709,000 (700,000 + or – 9,000)
- There are approximately nineteen chances in twenty that the real value falls within the range 682,000 to 718,000 (700,000 + or – 18,000).

The real value in this case is the result we would obtain if we could enumerate the total population.

The following table shows the standard errors for this month's level estimates.

										AUSTRALIA										
										Males	Females	Persons								
										NSW	Vic.	Qld	SA	WA	Tas.	NT	ACT	Males	Females	Persons
Aged 15 years and over																				
Employed																				
Full time																				
'000	25.8	18.9	17.3	7.4	11.2	2.9	2.3	2.8	32.0	23.7	38.9									
Part time																				
'000	18.7	12.7	12.3	5.7	8.4	2.3	0.8	2.0	14.2	21.9	27.2									
Total																				
'000	28.4	23.3	20.1	8.7	12.4	3.4	2.8	3.0	35.2	33.1	44.3									
Unemployed																				
Looking for f/t work																				
'000	8.6	8.3	7.6	2.9	4.8	1.2	0.7	0.9	11.8	9.6	15.3									
Looking for p/t work																				
'000	5.8	5.5	5.6	2.0	2.8	0.6	0.3	0.8	6.3	7.9	10.2									
Total																				
'000	10.5	10.0	9.0	3.4	5.7	1.4	0.9	1.2	13.5	12.5	18.6									
Labour force																				
'000	28.7	24.1	20.5	8.8	12.5	3.5	2.9	3.0	36.0	34.0	45.0									
Not in labour force																				
'000	24.6	21.2	22.7	8.3	12.1	3.5	3.1	3.1	31.6	36.0	42.6									
Unemployment rate																				
Looking for f/t work																				
pts	0.3	0.4	0.4	0.5	0.5	0.7	0.7	0.5	0.2	0.3	0.2									
Looking for p/t work																				
pts	0.5	0.5	0.7	0.6	0.6	0.7	1.1	1.2	0.5	0.3	0.2									
Total																				
pts	0.3	0.3	0.3	0.4	0.4	0.5	0.6	0.5	0.2	0.2	0.1									
Participation rate																				
pts	0.4	0.5	0.5	0.6	0.6	0.8	1.5	0.9	0.4	0.3	0.2									
Aged 15–19 years																				
Employed																				
Full time																				
'000	3.9	1.9	2.5	0.9	1.5	0.5	0.2	0.4	4.5	3.6	5.2									
Part time																				
'000	5.8	3.5	4.3	1.7	2.4	0.7	0.2	0.7	6.2	7.1	9.1									
Total																				
'000	6.6	3.9	4.9	1.9	2.7	0.8	0.3	0.8	7.3	7.6	10.2									
Unemployed																				
Looking for f/t work																				
'000	2.7	2.1	2.8	1.0	1.5	0.5	0.2	0.2	3.8	3.2	5.0									
Looking for p/t work																				
'000	2.8	3.2	3.4	1.3	1.9	0.4	0.2	0.5	4.3	4.2	6.0									
Total																				
'000	3.9	3.9	4.6	1.7	2.4	0.7	0.3	0.5	5.7	5.3	7.9									
Labour force																				
'000	7.2	4.3	5.5	2.1	3.1	0.9	0.3	0.9	8.0	8.2	11.3									
Not in labour force																				
'000	9.8	6.1	7.7	3.0	4.5	1.1	0.7	1.3	10.9	10.1	15.3									
Unemployment rate																				
Looking for f/t work																				
pts	3.8	5.9	5.6	8.4	7.5	8.0	6.9	13.0	2.9	4.3	2.5									
Looking for p/t work																				
pts	1.6	2.2	2.4	3.2	3.0	3.0	3.8	4.4	1.7	1.2	1.0									
Total																				
pts	1.7	2.1	2.4	3.2	3.0	3.3	3.6	4.2	1.5	1.3	1.0									
Participation rate																				
pts	1.5	1.2	1.7	2.1	1.9	2.9	2.0	3.7	1.0	1.1	0.8									
Unemployment to population ratio – looking for f/t work																				
pts	0.6	0.6	0.9	1.0	1.0	1.6	1.4	1.0	0.5	0.4	0.3									

STANDARD ERRORS *continued*

MOVEMENT ESTIMATES

The following example illustrates how to use the standard error to interpret a movement estimate. Let us say that one month the published level estimate for females employed part-time in Australia is 1,890,000; the next month the published level estimate is 1,900,000 and the associated standard error for the movement estimate is 11,900. The standard error is then used to interpret the published movement estimate of 10,000. For instance, the standard error of 11,900 indicates that:

- There are approximately two chances in three that the real movement between the two months falls within the range – 1,900 to 21,900 (10,000 + or – 11,900)
- There are approximately nineteen chances in twenty that the real movement falls within the range – 13,800 to 33,800 (10,000 + or – 23,800).

The following table shows the standard errors for this month's movement estimates.

										AUSTRALIA										
										Males	Females	Persons								
										NSW	Vic.	Qld	SA	WA	Tas.	NT	ACT			
Aged 15 years and over																				
Employed																				
Full time	'000	15.2	12.5	9.3	3.9	6.6	1.7	1.8	1.8	18.7	13.9	23.9								
Part time	'000	9.9	8.6	6.1	2.9	4.4	1.3	0.9	1.2	8.9	13.0	15.8								
Total	'000	18.4	15.4	13.1	5.6	8.7	2.2	2.0	2.2	20.8	19.3	29.6								
Unemployed																				
Looking for f/t work	'000	8.8	8.2	7.7	3.1	5.0	1.2	0.7	1.2	11.8	9.5	15.2								
Looking for p/t work	'000	6.2	5.5	4.9	2.0	3.3	0.7	0.4	0.9	6.3	8.0	10.2								
Total	'000	10.7	10.0	9.0	3.7	5.9	1.3	0.8	1.4	13.4	12.4	18.5								
Labour force	'000	18.9	15.9	13.9	6.0	9.1	2.3	2.1	2.2	21.5	19.9	30.6								
Not in labour force	'000	18.5	15.2	14.0	5.9	9.1	2.2	2.1	2.3	18.4	22.1	29.9								
Unemployment rate																				
Looking for f/t work	pts	0.3	0.4	0.5	0.5	0.5	0.8	0.7	0.6	0.2	0.3	0.2								
Looking for p/t work	pts	0.5	0.5	0.7	0.7	0.7	0.7	1.2	1.3	0.5	0.3	0.3								
Total	pts	0.3	0.3	0.4	0.4	0.4	0.5	0.6	0.6	0.2	0.2	0.2								
Participation rate	pts	0.3	0.3	0.4	0.4	0.4	0.5	1.1	0.7	0.2	0.2	0.2								
Aged 15–19 years																				
Employed																				
Full time	'000	2.7	2.0	1.8	0.6	1.0	0.3	0.3	0.3	3.4	2.8	3.9								
Part time	'000	3.9	3.3	2.7	1.2	1.8	0.5	0.4	0.5	4.3	4.9	6.0								
Total	'000	4.4	3.6	3.0	1.3	2.0	0.6	0.5	0.6	5.0	5.2	6.8								
Unemployed																				
Looking for f/t work	'000	2.8	2.2	2.7	1.1	1.6	0.5	0.2	0.2	3.8	3.3	5.0								
Looking for p/t work	'000	3.4	3.2	3.0	1.4	2.1	0.4	0.2	0.6	4.3	4.4	6.2								
Total	'000	4.1	4.0	4.0	1.7	2.7	0.7	0.4	0.6	5.8	5.3	7.8								
Labour force	'000	4.7	3.9	3.3	1.4	2.2	0.7	0.5	0.6	5.4	5.5	7.3								
Not in labour force	'000	6.0	5.0	3.8	1.8	2.9	0.7	0.8	0.7	7.1	6.6	9.3								
Unemployment rate																				
Looking for f/t work	pts	3.8	5.7	5.6	9.6	8.2	9.9	6.9	14.2	3.0	4.5	2.5								
Looking for p/t work	pts	1.9	2.2	2.5	3.4	3.3	3.3	3.6	4.8	1.8	1.4	1.1								
Total	pts	1.8	2.2	2.5	3.5	3.2	3.7	3.6	4.5	1.6	1.4	1.0								
Participation rate	pts	1.0	1.1	1.0	1.4	1.4	2.0	3.3	2.6	0.7	0.8	0.5								
Unemployment to population ratio – looking for f/t work	pts	0.6	0.6	0.9	1.0	1.0	1.6	1.4	1.1	0.5	0.4	0.3								

GLOSSARY

Actively looked for work	<p>Actively looked for work includes:</p> <ul style="list-style-type: none">■ written, telephoned or applied to an employer for work;■ had an interview with an employer for work;■ answered an advertisement for a job;■ checked or registered with an employment agency;■ taken steps to purchase or start your own business;■ advertised or tendered for work; and■ contacted friends or relatives in order to obtain work.
Actual hours of work	<p>Actual hours of work refers to a specified reference period (e.g. a week) and includes:</p> <ul style="list-style-type: none">■ hours actually worked during normal periods of work;■ time spent in addition to hours worked during normal periods of work (including overtime);■ time spent at the place of work on activities such as the preparation of the workplace, repairs and maintenance, preparation and cleaning of tools, and the preparation of receipts, time sheets and reports;■ time spent at the place of work waiting or standing by due to machinery or process breakdown, accident, lack of supplies, power or internet access, etc;■ time corresponding to short rest periods (resting time) including tea and coffee breaks or prayer breaks;■ travel time connected to work (excluding commuting time); and■ training and skills enhancement related to the job or employer. <p>Excluded are:</p> <ul style="list-style-type: none">■ hours paid for but not worked, such as paid annual leave, public holidays or paid sick leave;■ meal breaks (e.g. lunch breaks);■ paid and unpaid time 'on call';■ time spent on travel to and from work when no productive activity for the job is performed (e.g. commuting time); and■ time off during working hours to attend outside educational activities, even if it is authorised, e.g. those not connected to the job or employer. <p>For multiple job holders the LFS collects a separate measure of actual hours worked in main job and in all jobs.</p>
Attending full time education	<p>Persons aged 15-24 years enrolled at secondary or high school or enrolled as a full time student at a Technical and Further Education (TAFE) college, university, or other educational institution in the reference week.</p>
Attending school	<p>Persons aged 15-19 years enrolled at secondary or high school in the reference week.</p>
Attending tertiary educational institution full time	<p>Persons aged 15-24 years enrolled full time at a TAFE college, university, or other educational institution in the reference week, except those persons aged 15-19 years who were still attending school.</p>
Civilian population aged 15 years and over	<p>All usual residents of Australia aged 15 years and over except members of the permanent defence forces, certain diplomatic personnel of overseas governments customarily excluded from census and estimated population counts, overseas residents in Australia, and members of non-Australian defence forces (and their dependants) stationed in Australia.</p>
Composite Estimation	<p>The estimation methodology used in the Labour Force Survey. Composite Estimation uses sample responses from nearby months as well as from the reference month to derive estimates for the reference month. This approach achieves gains in efficiency by exploiting the high similarity between the responses provided by the same respondent in previous months. For details see Information Paper: Forthcoming Changes to Labour Force Statistics, 2007 (cat. no. 6292.0).</p>
Employed	<p>All persons aged 15 years and over who met one of the following criteria during the</p>

GLOSSARY *continued*

Employed <i>continued</i>	<p>reference week:</p> <ul style="list-style-type: none">■ Worked for one hour or more for pay, profit, commission or payment in kind, in a job or business or on a farm (employees and owner managers of incorporated or unincorporated enterprises).■ Worked for one hour or more without pay in a family business or on a farm (contributing family workers).■ Were employees who had a job but were not at work and were:<ul style="list-style-type: none">■ away from work for less than four weeks up to the end of the reference week; or■ away from work for more than four weeks up to the end of the reference week and received pay for some or all of the four week period to the end of the reference week; or■ away from work as a standard work or shift arrangement; or■ on strike or locked out; or■ on workers' compensation and expected to return to their job.■ Were owner managers who had a job, business or farm, but were not at work.
Employed full-time	Includes employed persons who usually worked 35 hours or more a week (in all jobs) and those who, although usually working less than 35 hours a week, worked 35 hours or more during the reference week.
Employed part-time	Includes employed persons who usually worked less than 35 hours a week (in all jobs) and either did so during the reference week, or were not at work in the reference week.
Employment to population ratio	For any group, the number of employed persons expressed as a percentage of the civilian population in the same group.
Estimated resident population (ERP)	Estimated resident population (ERP), is Australia's official measure of the population of Australia and is based on the concept of usual residence. It refers to all people, regardless of nationality, citizenship or legal status, who usually live in Australia, with the exception of foreign diplomatic personnel and their families. It includes usual residents who are overseas for fewer than 12 months. It excludes overseas visitors who are in Australia for fewer than 12 months. Refer to Australian Demographic Statistics (cat. no. 3101.0).
Flow estimates	Flow estimates are a measure of activity over a given period. For example, monthly hours worked in all jobs is a measure of the total number of hours worked in a calendar month.
Gross flows	<p>The matching of respondents who report in consecutive months enables analysis of the transition of individuals between the different labour force status classifications, referred to as the matched sample. The transition counts between the different labour force status classifications from one point in time to the next are commonly referred to as gross flows.</p> <p>The figures presented in gross flows are presented in original terms only and do not align with published labour force estimates. The gross flows figures are derived from the matched sample between consecutive months, which after taking account of the sample rotation and varying non-response in each month is approximately 80 percent of the sample.</p> <p>Caution should be exercised when analysing these gross flows data due to:</p> <ul style="list-style-type: none">■ the figures presented sum to approximately 80 percent of the population values as the gross flows data are based on the matched sample only;■ there is no adjustment applied to account for changes due to seasonal patterns (referred to commonly as seasonal adjustment); and■ the estimates of relative sizes of each transition class are subject to bias due to the matched sample being a non-representative sample.
Labour force	For any group, persons who were employed or unemployed, as defined.

GLOSSARY *continued*

Labour force status	A classification of the civilian population aged 15 years and over into employed, unemployed or not in the labour force, as defined. The definitions conform closely to the international standard definitions adopted by the International Conferences of Labour Statisticians.
Long-term unemployed	The number of persons unemployed for 52 weeks or over.
Long-term unemployment ratio	The number of long-term unemployed persons, expressed as a percentage of the total unemployed population.
Market sector	The market sector is an industry grouping comprising the following industries: Agriculture, forestry and fishing; Mining; Manufacturing; Electricity, gas, water and waste services; Construction; Wholesale trade; Retail trade; Accommodation and food services; Transport, postal and warehousing; Information media and telecommunications; Finance and insurance services; Rental, hiring and real estate services; Professional, scientific and technical services; Administrative and support services; Arts and recreation services; and Other services. Refer to Australian National Accounts: Concepts, Sources and Methods (cat. no. 5216.0).
Non-market Sector	The non-market sector is an industry grouping comprising the following industries: Education and training; Public administration & safety; and Health care and social assistance. Refer to Australian National Accounts: Concepts, Sources and Methods (cat. no. 5216.0).
Monthly hours worked in all jobs	<p>Monthly hours worked in all jobs measures the total number of actual hours worked by employed persons in a calendar month. It differs from the actual hours worked estimates (and the usual hours worked estimates) since these refer only to the hours worked in the reference week.</p> <p>The methodology used to produce monthly hours worked in all jobs means that these are synthetic estimates. Seasonally adjusted and trend estimates of monthly hours worked in all jobs are available for the period July 1978 onwards.</p> <p>Further information on the methodology used to produce the monthly hours worked in all jobs estimates is available on the ABS website in Information Paper: Expansion of Hours Worked Estimates from the Labour Force Survey (cat. no. 6290.0.55.001).</p> <p>Actual and usual hours worked cannot be aggregated across time to produce either quarterly or annual estimates as they relate to only a single week in the month. In contrast, monthly hours worked in all jobs estimates are a true monthly measure, and may be aggregated across time to produce both quarterly and annual estimates.</p>
Not in labour force	Persons who were not in the categories employed or unemployed, as defined. They include people who undertook unpaid household duties or other voluntary work only, were retired, voluntarily inactive and those permanently unable to work.
Participation rate	For any group, the labour force expressed as a percentage of the civilian population aged 15 years and over in the same group.
Response rate	The number of fully responding dwellings expressed as a percentage of the total number of dwellings excluding sample loss. Examples of sample loss include: dwellings where all persons are out of scope and/or coverage; vacant dwellings; dwellings under construction; dwellings converted to non-dwellings; derelict dwellings; and demolished dwellings.
Seasonally adjusted series	A time series of estimates with the estimated effects of normal seasonal variation removed. See Explanatory Notes for more detail.
Stock estimates	Stock estimates are a measure of certain attributes at a point in time and can be thought of as stocktakes. For example, the total number of employed persons is an account of the number of people who were considered employed in the Labour Force Survey reference week.

GLOSSARY *continued*

Trend series	A smoothed seasonally adjusted series of estimates. See Explanatory Notes for more detail.
Underemployment rate (proportion of labour force)	The number of underemployed workers expressed as a percentage of the labour force.
Underemployment ratio (proportion of employed)	The number of underemployed workers expressed as a percentage of total employed persons.
Underemployed workers	Employed persons aged 15 years and over who want, and are available for, more hours of work than they currently have. They comprise: <ul style="list-style-type: none">■ persons employed part time who want to work more hours and are available to start work with more hours, either in the reference week or in the four weeks subsequent to the survey; or■ persons employed full time who worked part time hours in the reference week for economic reasons (such as being stood down or insufficient work being available). It is assumed that these people wanted to work full time in the reference week and would have been available to do so.
Underutilisation rate	The sum of the number of persons unemployed and the number of persons in underemployment, expressed as a proportion of the labour force.
Unemployed	Persons aged 15 years and over who were not employed during the reference week, and: <ul style="list-style-type: none">■ had actively looked for full time or part time work at any time in the four weeks up to the end of the reference week and were available for work in the reference week; or■ were waiting to start a new job within four weeks from the end of the reference week and could have started in the reference week if the job had been available then.
Unemployed looked for full time work	Unemployed persons who: <ul style="list-style-type: none">■ actively looked for full time work; or■ were waiting to start a new full time job.
Unemployed looked for only part time work	Unemployed persons who: <ul style="list-style-type: none">■ actively looked for part time work only; or■ were waiting to start a new part time job.
Unemployment rate	For any group, the number of unemployed persons expressed as a percentage of the labour force in the same group.
Usual hours of work	Usual hours of work refers to a typical period rather than the hours worked in a specified reference period. The concept of usual hours applies both to persons at work and to persons temporarily absent from work, and is defined as the hours worked during a typical week or day. Actual hours worked (for a specific reference period) may differ from usual hours worked due to illness, vacation, strike, overtime work, a change of job, or similar reasons.

FOR MORE INFORMATION . . .

INTERNET **www.abs.gov.au** the ABS website is the best place for data from our publications and information about the ABS.

INFORMATION AND REFERRAL SERVICE

Our consultants can help you access the full range of information published by the ABS that is available free of charge from our website. Information tailored to your needs can also be requested as a 'user pays' service. Specialists are on hand to help you with analytical or methodological advice.

PHONE 1300 135 070

EMAIL client.services@abs.gov.au

FAX 1300 135 211

POST Client Services, ABS, GPO Box 796, Sydney NSW 2001

FREE ACCESS TO STATISTICS

All statistics on the ABS website can be downloaded free of charge.

WEB ADDRESS www.abs.gov.au