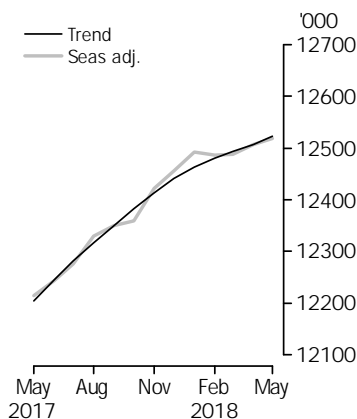


LABOUR FORCE

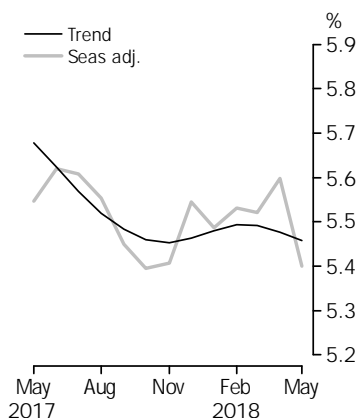
AUSTRALIA

EMBARGO: 11.30AM (CANBERRA TIME) THURS 14 JUN 2018

Employed Persons



Unemployment Rate



INQUIRIES

For further information about these and related statistics, email <client.services@abs.gov.au> or contact the National Information and Referral Service on 1300 135 070.

KEY FIGURES

	Apr 2018	May 2018	Apr 18 to May 18	May 17 to May 18
Trend				
Employed persons ('000)	12 506.4	12 522.3	15.9	2.6 %
Unemployed persons ('000)	725.1	723.7	-1.5	-1.5 %
Unemployment rate (%)	5.5	5.5	0.0 pts	-0.2 pts
Participation rate (%)	65.6	65.5	0.0 pts	0.5 pts
Seasonally Adjusted				
Employed persons ('000)	12 506.3	12 518.3	12.0	2.5 %
Unemployed persons ('000)	741.5	714.6	-26.8	-0.4 %
Unemployment rate (%)	5.6	5.4	-0.2 pts	-0.1 pts
Participation rate (%)	65.6	65.5	-0.2 pts	0.5 pts

KEY POINTS

TREND ESTIMATES (MONTHLY CHANGE)

- Employment increased 15,900 to 12,522,300.
- Unemployment decreased 1,500 to 723,700.
- Unemployment rate remained steady at 5.5%.
- Participation rate decreased by less than 0.1 pts to 65.5%.
- Monthly hours worked in all jobs increased 2.8 million hours (0.2%) to 1,747.1 million hours.

SEASONALLY ADJUSTED ESTIMATES (MONTHLY CHANGE)

- Employment increased 12,000 to 12,518,300. Full-time employment decreased 20,600 to 8,521,400 and part-time employment increased 32,600 to 3,996,900.
- Unemployment decreased 26,800 to 714,600. The number of unemployed persons looking for full-time work decreased 11,200 to 494,300 and the number of unemployed persons only looking for part-time work decreased 15,600 to 220,300.
- Unemployment rate decreased by 0.2 pts to 5.4%.
- Participation rate decreased by 0.2 pts to 65.5%.
- Monthly hours worked in all jobs decreased 24.2 million hours (1.4%) to 1,738.8 million hours.

LABOUR UNDERUTILISATION (QUARTERLY CHANGE)

- Trend estimates: the labour force underemployment rate increased by less than 0.1 pts to 8.5%. The underutilisation rate remained steady at 13.9%.
- Seasonally adjusted estimates: the labour force underemployment rate increased by 0.1 pts to 8.5%. The underutilisation rate remained steady at 13.9%.

NOTES

FORTHCOMING ISSUES

<i>ISSUE</i>	<i>RELEASE DATE</i>
June 2018	19 July 2018
July 2018	16 August 2018
August 2018	13 September 2018
September 2018	18 October 2018
October 2018	15 November 2018
November 2018	20 December 2018

UPDATE ON MONTHLY UNDEREMPLOYMENT ESTIMATES

As previously advised, the ABS intends to release monthly trend and seasonally adjusted underemployment and underutilisation measures in the September issue of Labour Force, Australia (cat. no. 6202.0) on 18 October 2018. Further information on the new monthly series, including changes that will be made to the suite of time series spreadsheets, will be included ahead of the release of the new series.

ROUNDING

Estimates of changes shown on the front cover and used in the commentary have been calculated using unrounded estimates, and may be different from, but are more accurate than, movement obtained from the rounded estimates. The graphs on the front cover also depict unrounded estimates.

SAMPLING ERROR

The estimates in this publication are based on a sample survey. Published estimates and movements are subject to sampling variability. Standard errors give a measure of sampling variability. The interval bounded by two standard errors is the 95% confidence interval, which provides a way of looking at the variability inherent in estimates. There is a 95% chance that the true value of the estimate lies within that interval.

MOVEMENTS IN SEASONALLY ADJUSTED SERIES BETWEEN APRIL 2018 AND MAY 2018

	<u>Monthly change</u>	<u>95% Confidence interval</u>	
Total Employment	12 000	-48 200	to 72 200
Total Unemployment	-26 800	-64 600	to 11 000
Unemployment rate	-0.2 pts	-0.4 pts	to 0.0 pts
Participation rate	-0.2 pts	-0.6 pts	to 0.2 pts

David W. Kalisch
Australian Statistician

LABOUR FORCE COMMENTARY MAY 2018

NATIONAL ESTIMATES

TREND ESTIMATES

Australia's trend estimate of employment increased by 15,900 persons in May 2018, with:

- the number of unemployed persons decreasing by 1,500 persons;
- the unemployment rate remaining steady at 5.5 per cent;
- the participation rate decreasing by less than 0.1 percentage points to 65.5 per cent; and
- the employment to population ratio decreased by less than 0.1 percentage points to 61.9 per cent.

Over the past year, trend employment increased by 317,700 persons (or 2.6 per cent), which was above the average annual growth rate over the past 20 years of 2.0 per cent. Over the same 12 month period the trend employment to population ratio, which is a measure of how employed the population (aged 15 years and over) is, increased by 0.6 percentage points to 61.9 per cent.

In monthly terms, trend employment increased by 15,900 persons between April and May 2018. This represents an increase of 0.13 per cent, which was below the monthly average growth rate over the past 20 years of 0.16 per cent.

Underpinning these net changes in employment is extensive dynamic change, which occurs each month in the labour market. In recent months there has generally been considerably more than 300,000 people entering employment, and more than 300,000 leaving employment. There is also further dynamic change in the hours that people work, which results in changes in the full-time and part-time composition of employment.

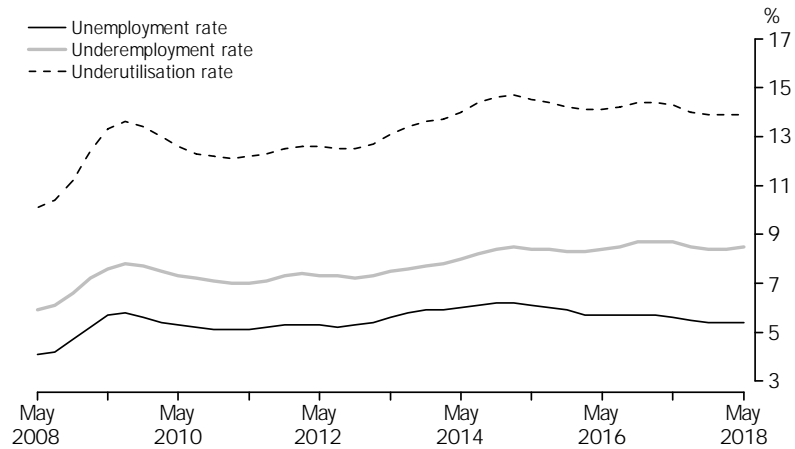
The trend estimate of monthly hours worked in all jobs increased by 2.8 million hours (or 0.2 per cent) in May 2018, to 1,747.1 million hours. Monthly hours worked increased by 2.7 per cent over the past year, slightly above the increase in employed persons (2.6 per cent). As a result, the average hours worked per employed person increased slightly to 139.5 hours per month, or around 32.2 hours per week.

The trend unemployment rate remained steady at 5.5 per cent in May 2018 for the tenth consecutive month. The number of unemployed persons decreased by 1,500 to 723,700 persons. Over the past year the trend unemployment rate decreased by 0.2 percentage points, with the number of unemployed decreasing by 11,400 persons.

The quarterly trend underemployment rate increased by less than 0.1 percentage points to 8.5 per cent over the quarter to May 2018. Over the past year this rate decreased by 0.2 percentage points from the record high of 8.7 per cent in May 2017. The quarterly underutilisation rate, which is a combined measure of unemployment and underemployment in the labour force, was 13.9 per cent in May 2018, down 0.4 percentage points from 14.3 per cent in May 2017.

TREND ESTIMATES
continued

GRAPH 1, UNEMPLOYMENT, UNDEREMPLOYMENT AND UNDERUTILISATION RATES, May 2008 to May 2018



The trend participation rate decreased by less than 0.1 percentage points to 65.5 per cent in May 2018, and was 0.5 percentage points higher than in May 2017. Both male and female participation rates dropped slightly to 70.7% and 60.5% respectively.

The labour force includes the total number of employed and unemployed persons. Over the past year, the labour force has increased by 306,300 persons (2.4 per cent). This rate of increase was above the rate of increase for the total Civilian Population aged 15 years and over (315,800 persons, or 1.6 per cent).

The trend participation rate for 15-64 year olds, which controls (in part) for the effects of an ageing population, remained steady at 78.0 per cent for the fifth consecutive month. The gap between male and female participation rates in this age range is less than 10 percentage points, at 82.8 and 73.3 per cent respectively, continuing the long term convergence of male and female participation.

The trend participation rate for 15-24 year olds (who are often referred to as the “youth” group in the labour market) remained steady at 67.6 per cent for the fifth consecutive month in May 2018. The youth unemployment rate decreased by 0.1 percentage points to 12.2 per cent in May 2018 and decreased by 0.7 percentage points over the year. The youth underemployment rate was 17.6 per cent, down 0.9 percentage points over the year, and the youth underutilisation rate was 29.6 per cent, down 1.4 percentage points over the same period.

The trend series smooths the more volatile seasonally adjusted estimates and provide the best measure of the underlying behaviour of the labour market.

SEASONALLY ADJUSTED
ESTIMATES

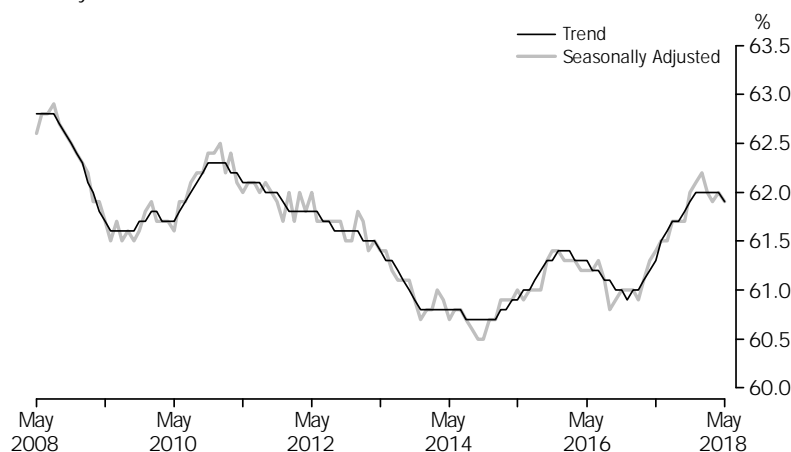
Seasonally adjusted employment increased by 12,000 persons from April to May 2018 (0.1 per cent increase). The underlying composition of the net change was a decrease of 20,600 persons in full-time employment and an increase of 32,600 persons in part-time employment. Since May 2017, full-time employment has increased by 178,800 persons, while part-time employment has increased by 125,100 persons.

Seasonally adjusted monthly hours worked in all jobs decreased by 24.2 million hours (or 1.4 per cent) in May 2018 to 1,738,800 million hours.

SEASONALLY ADJUSTED
ESTIMATES *continued*

The seasonally adjusted employment to population ratio decreased by less than 0.1 percentage points to 61.9 per cent in May 2018, and increased by 0.5 percentage points from the same time last year.

GRAPH 2, EMPLOYMENT TO POPULATION RATIO, PERSONS, May 2008 to May 2018



The seasonally adjusted unemployment rate decreased by 0.2 percentage points to 5.4 per cent in May 2018. The participation rate decreased by 0.2 percentage points to 65.5 per cent.

The quarterly seasonally adjusted underemployment rate increased by 0.1 percentage points to 8.5 per cent. The quarterly underutilisation rate remained steady at 13.9 per cent.

STATE AND TERRITORY
ESTIMATES
TREND ESTIMATES

In May 2018, increases in trend employment were observed in all states and territories except for Tasmania and the Australian Capital Territory where employment decreased by 100 and 500 people respectively. The largest increases were in New South Wales (up 9,100 persons), followed by Victoria (up 7,500 persons) and Western Australia (up 2,500 persons).

Over the past year, increases in employment were also observed in all states and territories. The largest increases were in New South Wales (up 137,200 persons), Queensland (up 70,400 persons), Victoria (up 69,900 persons) and Western Australia (up 20,400 persons). The highest annual employment growth rates were in New South Wales at 3.6 per cent, followed by Queensland at 2.9 per cent, South Australia at 2.4 per cent and both Victoria and the Australian Capital Territory at 2.2 per cent.

The monthly trend unemployment rate increased in Western Australia and Tasmania by 0.1 percentage points to 6.4 per cent and 6.3 per cent respectively. Victoria, South Australia and the Australian Capital Territory experienced 0.1 percentage point decreases in trend unemployment rates to 5.1, 5.7 and 3.7 per cent respectively. The monthly trend unemployment rate remained unchanged in New South Wales (4.9 per cent), Queensland (6.2 per cent) and the Northern Territory (4.0 per cent).

TREND ESTIMATES

continued

The quarterly trend underemployment rate increased in Queensland and South Australia by 0.3 and 0.2 percentage points to 9.2 and 9.6 per cent respectively. In Victoria and the Australian Capital Territory it fell 0.2 percentage points to 7.9 per cent and 5.4 per cent respectively, and in the Northern Territory it fell 0.1 percentage points to 3.8 per cent.

The monthly trend participation rate increased by 0.1 percentage points in New South Wales (64.8 per cent), Western Australia (68.6 per cent), Tasmania (61.4 per cent) and the Northern Territory (76.4 per cent) and remained steady in South Australia at 62.9 per cent. The largest decrease was in the Australian Capital Territory which was down 0.5 percentage points to 70.5 per cent, followed by Victoria and Queensland both down 0.1 percentage points to 65.4 and 65.8 per cent respectively.

SEASONALLY ADJUSTED ESTIMATES

In seasonally adjusted terms, the largest increase in employment was in Victoria (up 22,100 persons), followed by Queensland (up 5,000 persons), and New South Wales (up 2,800 persons). The largest decrease was in Western Australia (down 1,900 persons).

The only increase in the seasonally adjusted unemployment rate was in Tasmania (up 0.5 percentage points). In New South Wales the unemployment rate remained steady at 4.9 per cent. In both Queensland and South Australia the unemployment rate fell 0.3 percentage points to 6.2 and 5.6 per cent respectively. Victoria was down 0.2 percentage points to 5.1 per cent and Western Australia was down 0.1 percentage points to 6.4 per cent.

Queensland recorded the largest increase in the quarterly seasonally adjusted underemployment rate increasing 1.3 percentage points to 9.7 per cent, this was followed by Western Australia which increased by 0.6 percentage points to 9.3 per cent and South Australia which increased by 0.2 percentage points to 9.8 per cent. Tasmania recorded the largest decrease in the quarterly seasonally adjusted underemployment rate (down 1.0 percentage points to 9.9 per cent), this was followed by New South Wales (down 0.4 percentage points to 7.8 per cent), and Victoria (down 0.1 percentage points to 7.9 per cent).

The largest increase in the seasonally adjusted participation rate was in Tasmania (up 0.4 percentage points to 61.2 per cent) followed by Victoria (up 0.2 percentage points to 65.6 per cent). Queensland and Western Australia both dropped 0.2 percentage points to 65.7 and 68.6 per cent respectively whilst New South Wales dropped 0.1 percentage points to 64.8 per cent.

Seasonally adjusted estimates are not published for the two territories.

LABOUR FORCE COMMENTARY MAY 2018 *continued*

SEASONALLY ADJUSTED
ESTIMATES *continued*

TABLE 1, UNEMPLOYMENT RATE, STATES AND TERRITORIES

	TREND		SEASONALLY ADJUSTED	
	April	May	April	May
	%	%	%	%
New South Wales	4.9	4.9	5.0	4.9
Victoria	5.2	5.1	5.2	5.1
Queensland	6.2	6.2	6.5	6.2
South Australia	5.8	5.7	5.9	5.6
Western Australia	6.3	6.4	6.5	6.4
Tasmania	6.2	6.3	6.1	6.6
Northern Territory	4.0	4.0	np	np
Australian Capital Territory	3.8	3.7	np	np
Australia	5.5	5.5	5.6	5.4

np not available for publication but included in totals where applicable, unless otherwise indicated

INSIGHTS FROM THE ORIGINAL DATA

SAMPLE COMPOSITION

The Labour Force Survey sample can be thought of as comprising eight sub-samples (or rotation groups), with each sub-sample remaining in the survey for eight months, and one rotation group "rotating out" each month and being replaced by a new group "rotating in". This sample rotation is important in ensuring that seven-eighths of the sample are common from one month to the next, to ensure that changes in the estimates reflect real changes in the labour market, rather than the sample. In addition, the replacement sample is generally selected from the same geographic areas as the outgoing one, as part of a representative sampling approach.

When considering movements in the original estimates, it is possible to decompose the sample into three components:

- the matched common sample (survey respondents who responded in both April and May);
- the unmatched common sample (survey respondents who responded in May but who did not respond in April, or vice versa); and
- the incoming rotation group (survey respondents who replaced respondents who rotated out in April).

The detailed decomposition of each of these movements is included in the data cube 'Insights From the Original Data'.

In considering the three components of the sample, it is important to remember that the matched common sample describes the change observed for the same respondents in April and May, while the other two components reflect differences between the aggregate labour force status of different groups of people.

While the rotation groups are designed to be representative of the population, the outgoing and incoming rotation groups will almost always have somewhat different characteristics, as a result of the groups representing a sample of different households and people. The design of the survey, including the weighting and estimation processes, ensures that these differences are generally relatively minor and seeks to ensure that differences in characteristics of rotation groups do not affect the representativeness of the survey and its estimates. Monthly estimates are always designed to be representative of their respective months, regardless of the relative contribution of the three components of the sample.

INCOMING ROTATION GROUP

In original terms, the incoming rotation group in May 2018 had a higher employment to population ratio than the group it replaced (62.5 per cent in April, up to 63.4 per cent in May 2018), and was higher than the ratio for the entire sample (62.2 per cent).

The full-time employment to population ratio of the incoming rotation group was lower than the group it replaced (42.7 per cent in April 2018 and down to 42.1 per cent in May 2018), but the same as the entire sample (42.1 per cent).

The unemployment rate of the incoming rotation group was 0.6 percentage points lower than the whole sample (4.7 per cent, compared to 5.3 per cent), and it replaced a group with a higher rate (5.0 per cent in April). Its participation rate was above that of the sample as a whole (66.6 per cent, compared to 65.7 per cent), and also above the group it replaced (65.9 per cent in April).

OUTGOING ROTATION GROUP

In looking ahead to the June 2018 estimates, the outgoing rotation group in May 2018, which will be replaced by a new incoming rotation group in June 2018, has a higher employment to population ratio (63.8 per cent in May 2018) compared to the sample as a whole (62.2 per cent) in original terms. The full-time employment to population ratio (43.2 per cent) is higher than the ratio for the entire sample (42.1 per cent).

The unemployment rate for the outgoing rotation group in May 2018 is the same as the sample as a whole (5.3 per cent). The participation rate for the outgoing rotation group in May 2018 is 67.4 per cent, which is higher than the rate for the whole sample (65.7 per cent).

THE IMPORTANCE OF TREND DATA

As the gross flows and rotation group data are presented in original terms they are not directly comparable to the seasonally adjusted and trend data discussed elsewhere in the commentary, and are included to provide additional information for the original data. Since the original data are unadjusted, they have a considerable level of inherent sampling variability, which is specifically adjusted for in the trend series. The trend data provide the best measure of the underlying behaviour of the labour market and are the focus of the commentary in this publication.

LABOUR FORCE STATUS (AGED 15 YEARS AND OVER), Australia: Trend

	EMPLOYED				UNEMPLOYED				LABOUR FORCE	
	Full-time	Part-time	Total	Employment to	Looked for	Total	Unemployment rate	Total	Participation rate	
				population ratio						full-time work
	'000	'000	'000	%	'000	'000	%	'000	%	
PERSONS										
May 2015	8 114.0	3 625.0	11 739.0	60.9	538.2	764.9	6.1	12 504.0	64.9	
May 2016	8 195.9	3 785.0	11 980.9	61.3	502.9	722.0	5.7	12 702.9	64.9	
2017										
May	8 332.0	3 872.7	12 204.6	61.3	506.9	735.1	5.7	12 939.7	65.0	
June	8 369.5	3 875.5	12 245.0	61.5	502.2	730.4	5.6	12 975.3	65.1	
July	8 404.0	3 878.2	12 282.1	61.6	497.8	725.1	5.6	13 007.3	65.2	
August	8 434.4	3 882.2	12 316.6	61.7	494.2	720.2	5.5	13 036.8	65.3	
September	8 461.7	3 888.2	12 349.9	61.7	492.2	716.8	5.5	13 066.7	65.3	
October	8 485.4	3 897.1	12 382.5	61.8	491.7	715.0	5.5	13 097.4	65.4	
November	8 504.8	3 908.5	12 413.2	61.9	492.8	715.2	5.5	13 128.4	65.5	
December	8 519.0	3 921.8	12 440.8	62.0	495.7	717.7	5.5	13 158.5	65.5	
2018										
January	8 526.9	3 936.2	12 463.1	62.0	499.7	721.6	5.5	13 184.6	65.6	
February	8 529.5	3 950.5	12 480.0	62.0	503.1	724.7	5.5	13 204.7	65.6	
March	8 529.6	3 963.9	12 493.6	62.0	504.7	725.9	5.5	13 219.4	65.6	
April	8 530.2	3 976.2	12 506.4	62.0	504.6	725.1	5.5	13 231.6	65.6	
May	8 534.2	3 988.1	12 522.3	61.9	503.3	723.7	5.5	13 246.0	65.5	
MALES										
May 2015	5 200.1	1 116.1	6 316.3	66.7	318.7	408.6	6.1	6 724.9	71.0	
May 2016	5 207.5	1 199.3	6 406.9	66.7	294.8	379.6	5.6	6 786.4	70.7	
2017										
May	5 303.8	1 206.6	6 510.4	66.6	296.1	386.4	5.6	6 896.8	70.6	
June	5 320.7	1 207.1	6 527.8	66.7	295.3	385.1	5.6	6 912.9	70.7	
July	5 336.0	1 207.4	6 543.4	66.8	293.8	383.1	5.5	6 926.5	70.7	
August	5 349.4	1 207.9	6 557.3	66.9	291.6	380.3	5.5	6 937.6	70.7	
September	5 361.1	1 209.1	6 570.2	66.9	289.2	377.6	5.4	6 947.8	70.8	
October	5 370.6	1 211.8	6 582.4	67.0	287.3	375.5	5.4	6 957.9	70.8	
November	5 377.7	1 216.1	6 593.7	67.0	286.5	374.8	5.4	6 968.5	70.8	
December	5 382.3	1 221.3	6 603.6	67.0	287.4	376.0	5.4	6 979.6	70.8	
2018										
January	5 385.3	1 226.4	6 611.6	67.0	289.6	378.3	5.4	6 990.0	70.8	
February	5 387.8	1 230.0	6 617.9	67.0	291.7	380.7	5.5	6 998.5	70.8	
March	5 391.4	1 231.8	6 623.2	66.9	292.8	381.8	5.5	7 005.0	70.8	
April	5 396.3	1 232.6	6 629.0	66.9	292.8	381.6	5.4	7 010.5	70.8	
May	5 402.6	1 234.0	6 636.6	66.8	291.8	380.7	5.4	7 017.3	70.7	
FEMALES										
May 2015	2 913.9	2 508.9	5 422.8	55.3	219.5	356.3	6.2	5 779.1	59.0	
May 2016	2 988.3	2 585.6	5 574.0	56.0	208.1	342.5	5.8	5 916.4	59.4	
2017										
May	3 028.1	2 666.1	5 694.2	56.2	210.8	348.6	5.8	6 042.9	59.7	
June	3 048.8	2 668.4	5 717.2	56.4	206.9	345.3	5.7	6 062.5	59.8	
July	3 067.9	2 670.8	5 738.7	56.5	204.0	342.1	5.6	6 080.8	59.9	
August	3 084.9	2 674.4	5 759.3	56.6	202.7	339.9	5.6	6 099.2	60.0	
September	3 100.6	2 679.1	5 779.7	56.8	203.0	339.2	5.5	6 118.9	60.1	
October	3 114.8	2 685.2	5 800.0	56.9	204.4	339.5	5.5	6 139.5	60.2	
November	3 127.1	2 692.4	5 819.5	57.0	206.3	340.4	5.5	6 159.9	60.3	
December	3 136.7	2 700.5	5 837.1	57.1	208.3	341.8	5.5	6 178.9	60.5	
2018										
January	3 141.6	2 709.8	5 851.4	57.2	210.1	343.2	5.5	6 194.6	60.5	
February	3 141.7	2 720.5	5 862.1	57.2	211.4	344.1	5.5	6 206.2	60.5	
March	3 138.3	2 732.1	5 870.4	57.2	211.9	344.1	5.5	6 214.4	60.6	
April	3 133.9	2 743.6	5 877.4	57.2	211.8	343.6	5.5	6 221.0	60.6	
May	3 131.6	2 754.1	5 885.7	57.2	211.5	343.0	5.5	6 228.7	60.5	

	EMPLOYED				UNEMPLOYED			LABOUR FORCE	
	Full-time	Part-time	Total	Employment to	Looked for	Total	Unemployment rate	Total	Participation rate
				population ratio					
	'000	'000	'000	%	'000	'000	%	'000	%
PERSONS									
May 2015	8 122.7	3 635.4	11 758.1	61.0	511.3	741.6	5.9	12 499.7	64.9
May 2016	8 182.4	3 782.2	11 964.6	61.2	506.7	726.7	5.7	12 691.2	64.9
2017									
May	8 342.6	3 871.8	12 214.4	61.4	492.1	717.4	5.5	12 931.8	65.0
June	8 412.7	3 830.3	12 242.9	61.5	500.9	729.0	5.6	12 971.9	65.1
July	8 397.0	3 878.2	12 275.2	61.5	495.2	729.2	5.6	13 004.4	65.2
August	8 435.3	3 894.0	12 329.4	61.7	498.3	724.9	5.6	13 054.3	65.3
September	8 441.4	3 908.7	12 350.1	61.7	487.2	711.8	5.4	13 062.0	65.3
October	8 470.4	3 889.2	12 359.6	61.7	488.1	704.9	5.4	13 064.5	65.2
November	8 512.6	3 909.8	12 422.4	62.0	492.0	710.0	5.4	13 132.4	65.5
December	8 525.2	3 931.0	12 456.2	62.1	502.1	731.1	5.5	13 187.4	65.7
2018									
January	8 516.9	3 975.3	12 492.3	62.2	498.9	725.1	5.5	13 217.4	65.8
February	8 536.4	3 949.4	12 485.8	62.0	510.6	731.1	5.5	13 216.9	65.7
March	8 514.0	3 973.9	12 487.9	61.9	522.1	729.7	5.5	13 217.7	65.6
April	8 542.0	3 964.2	12 506.3	62.0	505.6	741.5	5.6	13 247.7	65.6
May	8 521.4	3 996.9	12 518.3	61.9	494.3	714.6	5.4	13 232.9	65.5
MALES									
May 2015	5 206.5	1 119.2	6 325.6	66.8	309.0	400.8	6.0	6 726.4	71.0
May 2016	5 201.6	1 197.1	6 398.8	66.6	301.2	385.7	5.7	6 784.5	70.6
2017									
May	5 309.7	1 205.5	6 515.2	66.7	285.9	380.2	5.5	6 895.4	70.6
June	5 355.9	1 160.6	6 516.5	66.6	299.1	385.9	5.6	6 902.4	70.6
July	5 332.6	1 212.9	6 545.4	66.8	297.9	388.5	5.6	6 934.0	70.6
August	5 342.1	1 219.4	6 561.4	66.9	291.6	382.4	5.5	6 943.8	70.8
September	5 370.3	1 201.1	6 571.4	66.9	286.6	376.7	5.4	6 948.0	70.7
October	5 366.7	1 205.3	6 572.1	66.8	282.1	364.6	5.3	6 936.6	70.6
November	5 385.4	1 220.9	6 606.3	67.1	288.2	374.7	5.4	6 981.0	70.9
December	5 382.1	1 218.9	6 600.9	67.0	303.1	396.2	5.7	6 997.2	71.0
2018									
January	5 366.1	1 274.7	6 640.8	67.3	286.2	377.4	5.4	7 018.2	71.1
February	5 391.2	1 233.0	6 624.1	67.0	296.6	383.9	5.5	7 008.1	70.9
March	5 389.0	1 235.5	6 624.5	66.9	304.0	386.4	5.5	7 010.9	70.8
April	5 398.3	1 228.7	6 627.0	66.9	294.3	397.4	5.7	7 024.5	70.9
May	5 401.6	1 233.9	6 635.6	66.9	290.2	378.1	5.4	7 013.7	70.7
FEMALES									
May 2015	2 916.3	2 516.2	5 432.5	55.4	202.3	340.8	5.9	5 773.3	58.9
May 2016	2 980.7	2 585.0	5 565.8	55.9	205.5	341.0	5.8	5 906.8	59.4
2017									
May	3 032.9	2 666.3	5 699.2	56.3	206.2	337.2	5.6	6 036.4	59.6
June	3 056.7	2 669.7	5 726.4	56.5	201.8	343.1	5.7	6 069.5	59.9
July	3 064.4	2 665.3	5 729.8	56.4	197.3	340.7	5.6	6 070.4	59.8
August	3 093.3	2 674.7	5 768.0	56.7	206.7	342.5	5.6	6 110.5	60.1
September	3 071.1	2 707.6	5 778.8	56.7	200.6	335.2	5.5	6 114.0	60.0
October	3 103.7	2 683.9	5 787.6	56.8	206.0	340.3	5.6	6 127.9	60.1
November	3 127.1	2 688.9	5 816.1	57.0	203.8	335.3	5.5	6 151.4	60.3
December	3 143.1	2 712.2	5 855.3	57.3	199.0	334.9	5.4	6 190.2	60.6
2018									
January	3 150.9	2 700.6	5 851.5	57.2	212.7	347.8	5.6	6 199.2	60.6
February	3 145.2	2 716.5	5 861.7	57.2	214.0	347.1	5.6	6 208.8	60.6
March	3 125.0	2 738.4	5 863.4	57.1	218.2	343.4	5.5	6 206.8	60.5
April	3 143.7	2 735.5	5 879.2	57.2	211.3	344.0	5.5	6 223.3	60.6
May	3 119.8	2 762.9	5 882.7	57.2	204.1	336.5	5.4	6 219.2	60.4

LABOUR FORCE STATUS (AGED 15 YEARS AND OVER), Australia: Original

	EMPLOYED				UNEMPLOYED			LABOUR FORCE			
	Full-time	Part-time	Total	Employment to	Looked for full-time work	Total	Unemployment rate	Total	Participation rate	Not in the labour force	Civilian population aged 15 and over
				population ratio							
'000	'000	'000	%	'000	'000	%	'000	%	'000	'000	
PERSONS											
May 2015	8 123.0	3 679.8	11 802.9	61.3	504.6	731.8	5.8	12 534.6	65.1	6 734.1	19 268.7
May 2016	8 181.5	3 833.8	12 015.3	61.4	499.5	716.2	5.6	12 731.4	65.1	6 824.2	19 555.7
2017											
May	8 340.3	3 928.1	12 268.4	61.7	484.1	705.3	5.4	12 973.8	65.2	6 922.8	19 896.5
June	8 389.7	3 877.5	12 267.2	61.6	491.7	707.3	5.5	12 974.6	65.1	6 945.1	19 919.7
July	8 416.9	3 855.3	12 272.2	61.5	485.7	713.6	5.5	12 985.8	65.1	6 962.9	19 948.7
August	8 371.8	3 884.6	12 256.4	61.4	490.7	715.3	5.5	12 971.8	64.9	7 006.0	19 977.7
September	8 406.5	3 938.0	12 344.5	61.7	471.3	693.7	5.3	13 038.2	65.2	6 968.6	20 006.8
October	8 433.7	3 927.7	12 361.4	61.7	464.6	668.0	5.1	13 029.4	65.1	6 998.1	20 027.5
November	8 549.3	3 914.9	12 464.1	62.2	465.5	662.4	5.0	13 126.5	65.5	6 921.6	20 048.1
December	8 667.5	3 913.5	12 581.1	62.7	494.6	718.0	5.4	13 299.0	66.3	6 769.8	20 068.8
2018											
January	8 448.7	3 866.2	12 315.0	61.3	549.0	781.1	6.0	13 096.1	65.2	7 004.0	20 100.1
February	8 626.1	3 907.8	12 533.9	62.3	560.4	806.5	6.0	13 340.4	66.3	6 791.0	20 131.4
March	8 485.0	4 011.6	12 496.5	62.0	546.4	778.9	5.9	13 275.4	65.8	6 887.3	20 162.6
April	8 516.3	4 011.5	12 527.8	62.1	503.8	740.7	5.6	13 268.4	65.7	6 919.0	20 187.5
May	8 517.2	4 057.2	12 574.4	62.2	485.4	701.7	5.3	13 276.1	65.7	6 936.1	20 212.3
MALES											
May 2015	5 204.7	1 147.2	6 351.8	67.1	300.9	389.1	5.8	6 740.9	71.2	2 729.1	9 470.0
May 2016	5 200.2	1 227.7	6 427.9	66.9	292.8	373.7	5.5	6 801.6	70.8	2 801.8	9 603.4
2017											
May	5 308.3	1 235.9	6 544.2	67.0	277.4	367.7	5.3	6 912.0	70.8	2 856.4	9 768.3
June	5 336.6	1 192.3	6 528.9	66.8	294.5	371.7	5.4	6 900.6	70.6	2 879.1	9 779.7
July	5 338.8	1 206.1	6 544.9	66.8	297.1	384.8	5.6	6 929.7	70.8	2 864.0	9 793.7
August	5 305.5	1 212.9	6 518.3	66.5	294.0	382.2	5.5	6 900.6	70.4	2 907.1	9 807.7
September	5 345.4	1 212.7	6 558.1	66.8	281.3	375.2	5.4	6 933.3	70.6	2 888.4	9 821.7
October	5 350.9	1 218.3	6 569.2	66.8	273.6	350.9	5.1	6 920.1	70.4	2 911.6	9 831.7
November	5 403.7	1 210.2	6 613.9	67.2	276.5	354.0	5.1	6 967.9	70.8	2 873.7	9 841.6
December	5 464.8	1 195.9	6 660.7	67.6	295.8	395.6	5.6	7 056.3	71.6	2 795.3	9 851.6
2018											
January	5 329.6	1 232.6	6 562.1	66.5	312.7	411.2	5.9	6 973.4	70.7	2 893.7	9 867.1
February	5 452.7	1 210.4	6 663.1	67.4	317.7	415.7	5.9	7 078.7	71.6	2 803.9	9 882.7
March	5 384.0	1 247.4	6 631.4	67.0	312.3	403.5	5.7	7 034.9	71.1	2 863.3	9 898.2
April	5 391.2	1 261.7	6 652.8	67.1	288.2	387.0	5.5	7 039.9	71.0	2 870.5	9 910.3
May	5 399.9	1 264.9	6 664.8	67.2	281.3	365.5	5.2	7 030.3	70.9	2 892.2	9 922.5
FEMALES											
May 2015	2 918.4	2 532.7	5 451.0	55.6	203.7	342.7	5.9	5 793.8	59.1	4 005.0	9 798.8
May 2016	2 981.2	2 606.1	5 587.4	56.1	206.7	342.5	5.8	5 929.8	59.6	4 022.5	9 952.3
2017											
May	3 032.0	2 692.2	5 724.2	56.5	206.7	337.6	5.6	6 061.8	59.9	4 066.4	10 128.2
June	3 053.2	2 685.2	5 738.4	56.6	197.2	335.6	5.5	6 074.0	59.9	4 065.9	10 140.0
July	3 078.0	2 649.2	5 727.3	56.4	188.6	328.8	5.4	6 056.1	59.6	4 098.9	10 155.0
August	3 066.3	2 671.8	5 738.1	56.4	196.7	333.1	5.5	6 071.2	59.7	4 098.9	10 170.1
September	3 061.1	2 725.3	5 786.4	56.8	190.0	318.4	5.2	6 104.9	59.9	4 080.2	10 185.1
October	3 082.8	2 709.5	5 792.3	56.8	191.1	317.0	5.2	6 109.3	59.9	4 086.5	10 195.8
November	3 145.5	2 704.7	5 850.2	57.3	189.0	308.4	5.0	6 158.6	60.3	4 047.9	10 206.5
December	3 202.8	2 717.6	5 920.4	57.9	198.8	322.3	5.2	6 242.7	61.1	3 974.5	10 217.2
2018											
January	3 119.1	2 633.7	5 752.8	56.2	236.4	369.9	6.0	6 122.7	59.8	4 110.3	10 233.0
February	3 173.4	2 697.4	5 870.8	57.3	242.7	390.8	6.2	6 261.6	61.1	3 987.1	10 248.7
March	3 100.9	2 764.1	5 865.1	57.1	234.1	375.4	6.0	6 240.5	60.8	4 024.0	10 264.4
April	3 125.1	2 749.8	5 874.9	57.2	215.6	353.6	5.7	6 228.6	60.6	4 048.6	10 277.1
May	3 117.4	2 792.2	5 909.6	57.4	204.1	336.3	5.4	6 245.8	60.7	4 044.0	10 289.8

	EMPLOYED		<i>Employment to population ratio</i>	UNEMPLOYED		LABOUR FORCE	
	<i>Full-time</i>	<i>Total</i>		<i>Total</i>	<i>Unemployment rate</i>	<i>Labour force</i>	<i>Participation rate</i>
	'000	'000					

TREND

New South Wales	2 768.7	3 991.5	61.6	205.3	4.9	4 196.8	64.8
Victoria	2 193.6	3 269.8	62.1	177.4	5.1	3 447.1	65.4
Queensland	1 694.1	2 476.1	61.7	163.9	6.2	2 640.0	65.8
South Australia	543.8	842.6	59.3	51.2	5.7	893.8	62.9
Western Australia	900.9	1 341.2	64.2	91.8	6.4	1 433.0	68.6
Tasmania	158.0	248.5	57.5	16.5	6.3	265.0	61.4
Northern Territory	110.5	139.3	73.4	5.9	4.0	145.2	76.4
Australian Capital Territory	166.7	227.1	68.0	8.8	3.7	235.9	70.5
Australia	8 534.2	12 522.3	61.9	723.7	5.5	13 246.0	65.5

SEASONALLY ADJUSTED

New South Wales	2 766.6	3 991.1	61.6	206.2	4.9	4 197.2	64.8
Victoria	2 189.6	3 274.2	62.2	174.5	5.1	3 448.7	65.6
Queensland	1 682.6	2 471.3	61.6	163.9	6.2	2 635.2	65.7
South Australia	542.8	843.6	59.3	50.2	5.6	893.8	62.8
Western Australia	906.3	1 340.0	64.2	91.3	6.4	1 431.2	68.6
Tasmania	158.7	247.6	57.2	17.4	6.6	265.0	61.2
Australia	8 521.4	12 518.3	61.9	714.6	5.4	13 232.9	65.5

ORIGINAL

New South Wales	2 760.5	4 000.0	61.8	202.4	4.8	4 202.4	64.9
Victoria	2 190.1	3 289.6	62.5	168.6	4.9	3 458.2	65.7
Queensland	1 677.1	2 474.4	61.7	164.5	6.2	2 638.9	65.8
South Australia	543.0	844.8	59.4	50.1	5.6	894.8	62.9
Western Australia	909.6	1 351.5	64.8	86.3	6.0	1 437.8	68.9
Tasmania	160.4	249.0	57.5	17.2	6.5	266.2	61.5
Northern Territory	111.3	139.4	73.6	5.3	3.6	144.7	76.3
Australian Capital Territory	165.2	225.7	67.6	7.5	3.2	233.2	69.9
Australia	8 517.2	12 574.4	62.2	701.7	5.3	13 276.1	65.7

	EMPLOYED FULL-TIME		EMPLOYED TOTAL		UNEMPLOYED TOTAL		UNEMPLOYMENT RATE		PARTICIPATION RATE		CIVILIAN POPULATION AGED 15 YEARS AND OVER
	<i>Trend</i>	<i>Seasonally adjusted</i>	<i>Trend</i>	<i>Seasonally adjusted</i>	<i>Trend</i>	<i>Seasonally adjusted</i>	<i>Trend</i>	<i>Seasonally adjusted</i>	<i>Trend</i>	<i>Seasonally adjusted</i>	<i>Original</i>
	'000	'000	'000	'000	'000	'000	%	%	%	%	'000
PERSONS											
May 2015	2 595.1	2 589.0	3 696.3	3 691.8	228.6	224.7	5.8	5.7	63.6	63.5	6 170.2
May 2016	2 637.7	2 646.1	3 814.0	3 832.7	206.6	206.9	5.1	5.1	64.2	64.5	6 262.2
2017											
May	2 687.0	2 692.9	3 854.3	3 869.0	196.7	192.8	4.9	4.7	63.5	63.7	6 376.6
June	2 701.7	2 708.9	3 867.5	3 877.2	195.7	195.9	4.8	4.8	63.6	63.8	6 383.6
July	2 715.4	2 714.9	3 880.4	3 878.8	194.9	202.3	4.8	5.0	63.7	63.8	6 393.4
August	2 727.9	2 739.2	3 893.0	3 892.1	194.0	201.2	4.7	4.9	63.8	63.9	6 403.3
September	2 738.9	2 740.8	3 906.4	3 911.0	193.5	190.4	4.7	4.6	64.0	64.0	6 413.1
October	2 747.4	2 750.4	3 920.0	3 913.2	193.6	186.9	4.7	4.6	64.1	63.9	6 419.3
November	2 753.6	2 757.6	3 932.8	3 938.3	194.6	192.5	4.7	4.7	64.2	64.3	6 425.5
December	2 758.0	2 764.8	3 944.3	3 959.6	196.6	199.8	4.7	4.8	64.4	64.7	6 431.8
2018											
January	2 760.3	2 756.7	3 954.5	3 941.6	199.6	210.1	4.8	5.1	64.5	64.4	6 441.9
February	2 761.3	2 754.8	3 964.1	3 967.9	202.8	200.8	4.9	4.8	64.6	64.6	6 451.9
March	2 762.5	2 759.0	3 973.3	3 961.0	205.0	207.8	4.9	5.0	64.7	64.5	6 462.0
April	2 764.9	2 776.9	3 982.4	3 988.3	205.7	207.8	4.9	5.0	64.8	64.9	6 469.6
May	2 768.7	2 766.6	3 991.5	3 991.1	205.3	206.2	4.9	4.9	64.8	64.8	6 477.2
MALES											
May 2015	1 647.6	1 645.2	1 998.9	1 999.5	115.9	113.6	5.5	5.4	69.9	69.9	3 024.9
May 2016	1 653.7	1 663.9	2 029.3	2 046.6	107.4	111.4	5.0	5.2	69.6	70.3	3 069.9
2017											
May	1 690.5	1 689.8	2 063.9	2 067.8	106.9	103.1	4.9	4.7	69.4	69.4	3 127.1
June	1 696.9	1 702.4	2 068.7	2 059.2	107.3	107.7	4.9	5.0	69.5	69.2	3 130.8
July	1 703.0	1 704.7	2 072.9	2 076.9	107.4	116.5	4.9	5.3	69.5	69.9	3 135.9
August	1 708.4	1 701.8	2 076.8	2 073.7	106.9	112.6	4.9	5.2	69.5	69.6	3 141.0
September	1 713.1	1 722.7	2 081.4	2 086.7	106.4	103.3	4.9	4.7	69.6	69.6	3 146.1
October	1 716.7	1 715.1	2 086.5	2 082.1	105.9	99.7	4.8	4.6	69.6	69.3	3 149.5
November	1 719.5	1 723.8	2 091.9	2 092.2	106.0	104.2	4.8	4.7	69.7	69.7	3 152.8
December	1 721.9	1 722.6	2 096.8	2 095.5	106.9	118.0	4.8	5.3	69.8	70.1	3 156.2
2018											
January	1 723.9	1 719.2	2 101.4	2 103.0	108.4	110.2	4.9	5.0	69.9	70.0	3 161.4
February	1 725.6	1 726.7	2 105.6	2 110.5	109.9	109.7	5.0	4.9	70.0	70.1	3 166.5
March	1 727.3	1 725.9	2 109.1	2 104.2	110.8	109.1	5.0	4.9	70.0	69.8	3 171.6
April	1 729.5	1 731.5	2 112.2	2 113.1	110.6	115.2	5.0	5.2	70.0	70.2	3 175.5
May	1 731.8	1 732.8	2 115.3	2 114.2	110.0	107.6	4.9	4.8	70.0	69.9	3 179.5
FEMALES											
May 2015	947.5	943.8	1 697.4	1 692.3	112.8	111.1	6.2	6.2	57.5	57.3	3 145.3
May 2016	984.0	982.2	1 784.7	1 786.1	99.2	95.5	5.3	5.1	59.0	58.9	3 192.3
2017											
May	996.5	1 003.1	1 790.3	1 801.2	89.8	89.7	4.8	4.7	57.9	58.2	3 249.5
June	1 004.7	1 006.5	1 798.8	1 818.0	88.4	88.3	4.7	4.6	58.0	58.6	3 252.8
July	1 012.4	1 010.2	1 807.5	1 802.0	87.5	85.8	4.6	4.5	58.2	58.0	3 257.6
August	1 019.5	1 037.4	1 816.2	1 818.4	87.1	88.6	4.6	4.6	58.4	58.5	3 262.3
September	1 025.8	1 018.2	1 825.0	1 824.3	87.1	87.1	4.6	4.6	58.6	58.5	3 267.0
October	1 030.7	1 035.3	1 833.4	1 831.0	87.7	87.2	4.6	4.5	58.8	58.7	3 269.9
November	1 034.1	1 033.8	1 840.9	1 846.1	88.6	88.3	4.6	4.6	59.0	59.1	3 272.7
December	1 036.1	1 042.2	1 847.5	1 864.1	89.8	81.8	4.6	4.2	59.1	59.4	3 275.6
2018											
January	1 036.4	1 037.4	1 853.0	1 838.6	91.3	99.9	4.7	5.2	59.2	59.1	3 280.5
February	1 035.8	1 028.1	1 858.5	1 857.3	92.9	91.1	4.8	4.7	59.4	59.3	3 285.4
March	1 035.1	1 033.1	1 864.2	1 856.8	94.2	98.6	4.8	5.0	59.5	59.4	3 290.4
April	1 035.4	1 045.4	1 870.2	1 875.2	95.1	92.6	4.8	4.7	59.7	59.7	3 294.0
May	1 037.0	1 033.8	1 876.2	1 876.9	95.3	98.5	4.8	5.0	59.8	59.9	3 297.8

	EMPLOYED FULL-TIME		EMPLOYED TOTAL		UNEMPLOYED TOTAL		UNEMPLOYMENT RATE		PARTICIPATION RATE		CIVILIAN POPULATION AGED 15 YEARS AND OVER

	<i>Trend</i>	<i>Seasonally adjusted</i>	<i>Trend</i>	<i>Seasonally adjusted</i>	<i>Trend</i>	<i>Seasonally adjusted</i>	<i>Trend</i>	<i>Seasonally adjusted</i>	<i>Trend</i>	<i>Seasonally adjusted</i>	<i>Original</i>
	'000	'000	'000	'000	'000	'000	%	%	%	%	'000
PERSONS											
May 2015	1 989.1	1 985.5	2 989.8	2 995.4	193.2	190.6	6.1	6.0	64.8	64.9	4 911.4
May 2016	2 085.0	2 082.0	3 085.9	3 074.8	187.8	191.5	5.7	5.9	65.1	65.0	5 024.9
2017											
May	2 147.7	2 153.6	3 199.8	3 202.1	208.5	206.9	6.1	6.1	66.2	66.2	5 147.7
June	2 156.0	2 174.3	3 207.1	3 206.6	208.6	203.4	6.1	6.0	66.2	66.1	5 155.4
July	2 163.0	2 163.0	3 213.7	3 204.6	207.4	208.6	6.1	6.1	66.2	66.1	5 165.4
August	2 168.7	2 172.7	3 220.3	3 224.1	205.4	209.4	6.0	6.1	66.2	66.3	5 175.5
September	2 173.3	2 168.1	3 227.0	3 235.0	203.2	204.3	5.9	5.9	66.2	66.3	5 185.5
October	2 177.1	2 173.4	3 234.0	3 221.0	200.8	195.1	5.8	5.7	66.1	65.8	5 193.5
November	2 180.5	2 186.3	3 240.3	3 250.1	198.1	188.2	5.8	5.5	66.1	66.1	5 201.4
December	2 183.6	2 185.3	3 245.1	3 246.3	195.0	210.8	5.7	6.1	66.0	66.4	5 209.3
2018											
January	2 186.1	2 192.5	3 248.9	3 252.4	191.6	192.2	5.6	5.6	65.9	66.0	5 221.2
February	2 187.9	2 188.8	3 252.4	3 235.2	187.9	193.6	5.5	5.6	65.8	65.5	5 233.0
March	2 189.4	2 175.8	3 256.7	3 262.1	184.0	180.4	5.3	5.2	65.6	65.6	5 244.8
April	2 191.0	2 193.7	3 262.3	3 252.1	180.2	180.1	5.2	5.2	65.5	65.3	5 252.9
May	2 193.6	2 189.6	3 269.8	3 274.2	177.4	174.5	5.1	5.1	65.4	65.6	5 261.1
MALES											
May 2015	1 299.4	1 298.0	1 613.6	1 615.9	98.3	95.9	5.7	5.6	71.2	71.2	2 405.5
May 2016	1 346.1	1 343.1	1 676.5	1 674.0	94.1	94.8	5.3	5.4	71.9	71.9	2 461.1
2017											
May	1 384.6	1 389.2	1 716.2	1 716.1	104.4	105.2	5.7	5.8	72.2	72.2	2 522.9
June	1 388.2	1 406.2	1 719.9	1 722.2	104.7	104.5	5.7	5.7	72.2	72.3	2 526.7
July	1 390.8	1 391.3	1 722.7	1 722.0	104.4	103.5	5.7	5.7	72.2	72.1	2 531.7
August	1 392.3	1 394.0	1 724.9	1 726.3	103.2	103.6	5.6	5.7	72.1	72.1	2 536.8
September	1 392.9	1 389.9	1 727.1	1 725.0	101.4	105.2	5.5	5.7	72.0	72.0	2 541.9
October	1 393.0	1 391.2	1 729.7	1 722.7	99.3	96.5	5.4	5.3	71.8	71.5	2 546.0
November	1 393.3	1 398.8	1 732.7	1 740.4	97.2	86.9	5.3	4.8	71.8	71.7	2 550.1
December	1 394.1	1 393.2	1 735.8	1 732.0	95.3	110.1	5.2	6.0	71.7	72.1	2 554.2
2018											
January	1 395.5	1 385.1	1 738.7	1 742.5	93.9	90.6	5.1	4.9	71.6	71.6	2 560.2
February	1 397.7	1 398.1	1 741.4	1 729.8	92.7	98.1	5.1	5.4	71.5	71.2	2 566.2
March	1 400.5	1 401.2	1 744.1	1 745.9	91.7	91.1	5.0	5.0	71.4	71.4	2 572.3
April	1 403.8	1 404.3	1 747.3	1 741.8	90.7	90.8	4.9	5.0	71.3	71.1	2 576.4
May	1 407.2	1 407.2	1 751.4	1 754.4	89.8	88.8	4.9	4.8	71.3	71.4	2 580.4
FEMALES											
May 2015	689.8	687.5	1 376.2	1 379.4	94.8	94.7	6.4	6.4	58.7	58.8	2 505.9
May 2016	738.9	738.9	1 409.4	1 400.8	93.8	96.7	6.2	6.5	58.6	58.4	2 563.7
2017											
May	763.1	764.4	1 483.6	1 486.1	104.0	101.7	6.6	6.4	60.5	60.5	2 624.9
June	767.9	768.1	1 487.2	1 484.5	103.8	98.8	6.5	6.2	60.5	60.2	2 628.7
July	772.2	771.7	1 491.0	1 482.6	103.0	105.1	6.5	6.6	60.5	60.3	2 633.7
August	776.4	778.8	1 495.4	1 497.8	102.2	105.8	6.4	6.6	60.6	60.8	2 638.6
September	780.3	778.2	1 500.0	1 510.0	101.8	99.1	6.4	6.2	60.6	60.9	2 643.6
October	784.0	782.2	1 504.3	1 498.3	101.5	98.7	6.3	6.2	60.7	60.3	2 647.4
November	787.2	787.5	1 507.5	1 509.7	100.9	101.3	6.3	6.3	60.7	60.8	2 651.3
December	789.5	792.1	1 509.3	1 514.3	99.6	100.7	6.2	6.2	60.6	60.8	2 655.2
2018											
January	790.6	807.4	1 510.2	1 509.9	97.7	101.6	6.1	6.3	60.4	60.6	2 661.0
February	790.3	790.7	1 511.0	1 505.5	95.2	95.5	5.9	6.0	60.3	60.0	2 666.7
March	788.9	774.6	1 512.5	1 516.2	92.3	89.3	5.7	5.6	60.1	60.1	2 672.5
April	787.2	789.4	1 514.9	1 510.2	89.5	89.3	5.6	5.6	59.9	59.8	2 676.6
May	786.4	782.4	1 518.4	1 519.8	87.6	85.7	5.5	5.3	59.8	59.9	2 680.7

	EMPLOYED FULL-TIME		EMPLOYED TOTAL		UNEMPLOYED TOTAL		UNEMPLOYMENT RATE		PARTICIPATION RATE		CIVILIAN POPULATION AGED 15 YEARS AND OVER
	<i>Trend</i>	<i>Seasonally adjusted</i>	<i>Trend</i>	<i>Seasonally adjusted</i>	<i>Trend</i>	<i>Seasonally adjusted</i>	<i>Trend</i>	<i>Seasonally adjusted</i>	<i>Trend</i>	<i>Seasonally adjusted</i>	<i>Original</i>
	'000	'000	'000	'000	'000	'000	%	%	%	%	'000
PERSONS											
May 2015	1 648.5	1 662.4	2 335.5	2 346.1	158.0	155.5	6.3	6.2	65.3	65.5	3 818.3
May 2016	1 642.4	1 635.6	2 361.0	2 357.4	156.9	158.2	6.2	6.3	65.0	65.0	3 872.8
2017											
May	1 644.3	1 646.5	2 405.7	2 406.4	160.1	153.9	6.2	6.0	65.1	64.9	3 942.3
June	1 651.0	1 652.7	2 418.7	2 406.0	159.2	164.1	6.2	6.4	65.3	65.1	3 948.3
July	1 656.8	1 648.9	2 430.6	2 434.2	157.9	159.0	6.1	6.1	65.5	65.6	3 953.9
August	1 662.8	1 663.8	2 440.9	2 452.0	156.5	148.2	6.0	5.7	65.6	65.7	3 959.6
September	1 670.5	1 668.9	2 450.1	2 446.9	155.4	151.8	6.0	5.8	65.7	65.5	3 965.2
October	1 680.3	1 678.2	2 458.3	2 459.9	155.0	155.4	5.9	5.9	65.8	65.9	3 969.7
November	1 690.7	1 690.0	2 465.0	2 464.6	155.7	154.2	5.9	5.9	65.9	65.9	3 974.2
December	1 699.2	1 703.0	2 469.7	2 460.8	157.4	157.6	6.0	6.0	66.0	65.8	3 978.8
2018											
January	1 704.1	1 703.6	2 472.5	2 482.3	159.5	161.2	6.1	6.1	66.0	66.3	3 984.7
February	1 704.8	1 712.6	2 474.0	2 479.0	161.4	162.5	6.1	6.2	66.0	66.2	3 990.7
March	1 702.0	1 704.7	2 474.3	2 474.7	162.8	159.6	6.2	6.1	66.0	65.9	3 996.7
April	1 697.6	1 697.6	2 474.6	2 466.4	163.5	172.0	6.2	6.5	65.9	65.9	4 002.9
May	1 694.1	1 682.6	2 476.1	2 471.3	163.9	163.9	6.2	6.2	65.8	65.7	4 009.2
MALES											
May 2015	1 034.5	1 046.6	1 235.8	1 240.1	90.8	90.7	6.8	6.8	70.8	71.0	1 873.8
May 2016	1 030.0	1 019.6	1 245.9	1 241.7	84.4	84.4	6.3	6.4	70.1	69.9	1 897.3
2017											
May	1 033.4	1 038.0	1 265.5	1 269.5	85.6	85.1	6.3	6.3	70.0	70.2	1 929.8
June	1 038.1	1 038.3	1 271.3	1 267.1	85.3	87.9	6.3	6.5	70.2	70.1	1 932.6
July	1 041.8	1 035.5	1 276.2	1 275.8	84.7	85.6	6.2	6.3	70.3	70.4	1 934.9
August	1 045.1	1 048.0	1 280.1	1 289.3	84.2	75.3	6.2	5.5	70.4	70.4	1 937.2
September	1 048.7	1 047.5	1 283.4	1 282.0	84.0	82.5	6.1	6.0	70.5	70.4	1 939.5
October	1 052.8	1 050.5	1 286.5	1 283.6	84.1	81.9	6.1	6.0	70.6	70.3	1 941.4
November	1 056.8	1 058.3	1 289.5	1 292.3	84.4	85.0	6.1	6.2	70.7	70.9	1 943.2
December	1 059.6	1 061.8	1 291.6	1 288.1	84.9	87.2	6.2	6.3	70.8	70.7	1 945.0
2018											
January	1 060.7	1 060.6	1 293.0	1 296.6	85.1	86.5	6.2	6.3	70.7	71.0	1 947.9
February	1 060.3	1 062.5	1 294.0	1 296.1	84.8	82.9	6.2	6.0	70.7	70.7	1 950.7
March	1 058.9	1 058.1	1 294.8	1 293.8	84.1	83.2	6.1	6.0	70.6	70.5	1 953.6
April	1 057.2	1 058.1	1 295.6	1 293.0	83.3	89.5	6.0	6.5	70.5	70.7	1 956.6
May	1 056.3	1 051.6	1 297.1	1 293.8	82.8	82.9	6.0	6.0	70.3	70.3	1 959.5
FEMALES											
May 2015	614.0	615.8	1 099.6	1 106.0	67.3	64.8	5.8	5.5	60.0	60.2	1 944.5
May 2016	612.4	616.0	1 115.1	1 115.7	72.6	73.8	6.1	6.2	60.1	60.2	1 975.5
2017											
May	611.0	608.5	1 140.2	1 136.9	74.5	68.8	6.1	5.7	60.4	59.9	2 012.5
June	612.9	614.4	1 147.4	1 138.9	73.9	76.2	6.1	6.3	60.6	60.3	2 015.7
July	615.0	613.3	1 154.4	1 158.4	73.2	73.4	6.0	6.0	60.8	61.0	2 019.0
August	617.8	615.8	1 160.9	1 162.8	72.3	72.9	5.9	5.9	61.0	61.1	2 022.4
September	621.9	621.3	1 166.7	1 164.9	71.4	69.3	5.8	5.6	61.1	60.9	2 025.7
October	627.5	627.8	1 171.7	1 176.3	71.0	73.5	5.7	5.9	61.3	61.6	2 028.4
November	633.9	631.8	1 175.6	1 172.3	71.3	69.2	5.7	5.6	61.4	61.1	2 031.1
December	639.6	641.2	1 178.1	1 172.7	72.5	70.4	5.8	5.7	61.5	61.1	2 033.8
2018											
January	643.4	643.0	1 179.5	1 185.7	74.5	74.6	5.9	5.9	61.5	61.9	2 036.9
February	644.5	650.0	1 180.0	1 182.8	76.6	79.6	6.1	6.3	61.6	61.9	2 040.0
March	643.1	646.6	1 179.5	1 180.9	78.6	76.4	6.2	6.1	61.6	61.5	2 043.1
April	640.3	639.5	1 179.0	1 173.4	80.2	82.5	6.4	6.6	61.6	61.4	2 046.4
May	637.7	631.0	1 179.1	1 177.5	81.1	81.0	6.4	6.4	61.5	61.4	2 049.7

	EMPLOYED FULL-TIME		EMPLOYED TOTAL		UNEMPLOYED TOTAL		UNEMPLOYMENT RATE		PARTICIPATION RATE		CIVILIAN POPULATION AGED 15 YEARS AND OVER
	Trend	Seasonally adjusted	Trend	Seasonally adjusted	Trend	Seasonally adjusted	Trend	Seasonally adjusted	Trend	Seasonally adjusted	Original
	'000	'000	'000	'000	'000	'000	%	%	%	%	'000
PERSONS											
May 2015	528.7	527.2	804.2	809.8	64.4	67.2	7.4	7.7	62.2	62.8	1 395.9
May 2016	524.2	521.7	809.0	805.7	59.8	59.5	6.9	6.9	61.9	61.6	1 404.4
2017											
May	532.0	529.0	823.2	820.2	57.9	60.7	6.6	6.9	62.3	62.3	1 413.7
June	533.9	537.9	824.7	825.7	56.4	58.0	6.4	6.6	62.3	62.5	1 414.3
July	535.3	535.8	826.0	828.2	54.5	54.4	6.2	6.2	62.2	62.4	1 415.1
August	536.2	535.0	826.8	829.5	52.7	50.0	6.0	5.7	62.1	62.1	1 416.0
September	536.8	529.6	827.6	827.4	51.7	51.1	5.9	5.8	62.1	62.0	1 416.8
October	537.6	538.2	828.5	826.3	51.7	50.8	5.9	5.8	62.1	61.9	1 417.3
November	538.7	546.3	830.1	828.7	52.2	54.0	5.9	6.1	62.2	62.3	1 417.8
December	540.1	537.1	832.4	830.4	52.8	52.4	6.0	5.9	62.4	62.2	1 418.3
2018											
January	541.5	542.2	835.1	837.0	53.2	53.2	6.0	6.0	62.6	62.7	1 419.2
February	542.6	549.4	837.8	843.3	53.0	55.8	6.0	6.2	62.7	63.3	1 420.1
March	543.3	543.6	840.0	837.6	52.4	49.7	5.9	5.6	62.8	62.4	1 421.0
April	543.6	543.3	841.5	841.0	51.7	52.8	5.8	5.9	62.9	62.9	1 421.7
May	543.8	542.8	842.6	843.6	51.2	50.2	5.7	5.6	62.9	62.8	1 422.4
MALES											
May 2015	348.4	347.5	426.4	432.2	36.4	35.5	7.9	7.6	67.7	68.4	683.9
May 2016	336.9	335.6	426.9	424.4	33.2	34.3	7.2	7.5	66.9	66.7	687.8
2017											
May	347.9	348.0	435.2	435.3	28.9	31.6	6.2	6.8	67.1	67.5	691.8
June	349.4	351.5	437.0	436.2	27.7	27.2	6.0	5.9	67.1	67.0	692.0
July	350.8	349.1	438.7	437.8	26.5	26.9	5.7	5.8	67.2	67.1	692.5
August	351.9	350.3	440.0	441.7	25.6	24.4	5.5	5.2	67.2	67.3	692.9
September	353.0	352.4	441.0	441.7	25.3	24.8	5.4	5.3	67.3	67.3	693.3
October	353.8	356.7	441.5	441.3	25.8	25.7	5.5	5.5	67.4	67.3	693.5
November	354.1	354.7	441.8	441.9	26.6	27.2	5.7	5.8	67.5	67.6	693.6
December	353.9	352.4	441.9	440.2	27.5	26.3	5.9	5.6	67.6	67.2	693.8
2018											
January	353.1	353.6	441.8	442.0	28.3	29.5	6.0	6.3	67.7	67.9	694.2
February	352.1	353.3	441.8	443.6	28.6	30.2	6.1	6.4	67.7	68.2	694.6
March	351.3	349.6	441.8	440.9	28.6	27.5	6.1	5.9	67.7	67.4	694.9
April	350.9	351.0	441.8	442.4	28.3	28.0	6.0	5.9	67.6	67.7	695.2
May	351.0	350.4	442.0	440.4	28.0	28.2	6.0	6.0	67.6	67.4	695.5
FEMALES											
May 2015	180.3	179.7	377.8	377.6	28.0	31.8	6.9	7.8	57.0	57.5	711.9
May 2016	187.3	186.1	382.1	381.2	26.6	25.2	6.5	6.2	57.0	56.7	716.6
2017											
May	184.1	181.0	388.0	384.9	29.1	29.1	7.0	7.0	57.8	57.3	721.9
June	184.5	186.5	387.6	389.5	28.8	30.8	6.9	7.3	57.6	58.2	722.3
July	184.6	186.6	387.3	390.4	28.0	27.4	6.7	6.6	57.5	57.8	722.7
August	184.3	184.7	386.8	387.8	27.1	25.6	6.5	6.2	57.2	57.2	723.1
September	183.8	177.2	386.6	385.7	26.4	26.4	6.4	6.4	57.1	56.9	723.5
October	183.8	181.6	387.0	385.1	25.9	25.1	6.3	6.1	57.0	56.7	723.8
November	184.6	191.6	388.3	386.8	25.6	26.8	6.2	6.5	57.2	57.1	724.2
December	186.2	184.7	390.5	390.2	25.3	26.1	6.1	6.3	57.4	57.5	724.5
2018											
January	188.4	188.7	393.3	395.0	24.9	23.7	6.0	5.7	57.7	57.8	725.0
February	190.5	196.1	396.0	399.7	24.4	25.6	5.8	6.0	57.9	58.6	725.6
March	192.0	194.0	398.2	396.7	23.8	22.3	5.6	5.3	58.1	57.7	726.1
April	192.7	192.2	399.7	398.5	23.3	24.9	5.5	5.9	58.3	58.3	726.5
May	192.9	192.4	400.7	403.2	23.2	22.0	5.5	5.2	58.4	58.5	726.9

	EMPLOYED FULL-TIME		EMPLOYED TOTAL		UNEMPLOYED TOTAL		UNEMPLOYMENT RATE		PARTICIPATION RATE		CIVILIAN POPULATION AGED 15 YEARS AND OVER
	<i>Trend</i>	<i>Seasonally adjusted</i>	<i>Trend</i>	<i>Seasonally adjusted</i>	<i>Trend</i>	<i>Seasonally adjusted</i>	<i>Trend</i>	<i>Seasonally adjusted</i>	<i>Trend</i>	<i>Seasonally adjusted</i>	<i>Original</i>
	'000	'000	'000	'000	'000	'000	%	%	%	%	'000
PERSONS											
May 2015	929.9	942.9	1 324.8	1 336.2	82.6	72.9	5.9	5.2	68.7	68.8	2 047.9
May 2016	884.6	878.9	1 310.9	1 313.3	81.8	83.1	5.9	6.0	67.6	67.8	2 058.7
2017											
May	907.5	902.5	1 320.9	1 320.2	79.6	77.1	5.7	5.5	67.6	67.4	2 071.6
June	909.7	910.8	1 325.5	1 328.7	78.9	78.4	5.6	5.6	67.7	67.9	2 072.5
July	910.4	913.5	1 329.1	1 327.6	79.2	74.8	5.6	5.3	67.9	67.6	2 074.2
August	910.0	906.5	1 332.1	1 325.5	80.2	82.7	5.7	5.9	68.0	67.8	2 075.8
September	909.1	910.0	1 334.5	1 333.1	81.4	80.7	5.7	5.7	68.2	68.1	2 077.5
October	907.4	896.7	1 336.1	1 326.7	82.4	84.1	5.8	6.0	68.3	67.9	2 078.3
November	904.8	906.9	1 337.1	1 336.0	83.2	94.3	5.9	6.6	68.3	68.8	2 079.0
December	901.7	906.4	1 337.3	1 342.5	84.0	82.2	5.9	5.8	68.3	68.5	2 079.8
2018											
January	899.0	896.2	1 337.2	1 335.8	85.4	82.0	6.0	5.8	68.3	68.1	2 081.4
February	897.1	898.5	1 336.9	1 333.1	87.2	85.6	6.1	6.0	68.4	68.1	2 082.9
March	896.7	890.1	1 337.3	1 333.7	89.1	98.1	6.2	6.8	68.4	68.7	2 084.4
April	898.2	892.8	1 338.7	1 341.9	90.7	92.7	6.3	6.5	68.5	68.8	2 085.4
May	900.9	906.3	1 341.2	1 340.0	91.8	91.3	6.4	6.4	68.6	68.6	2 086.5
MALES											
May 2015	618.0	618.7	737.1	738.4	47.8	46.0	6.1	5.9	76.6	76.5	1 025.0
May 2016	587.2	589.7	713.8	714.5	43.8	44.3	5.8	5.8	73.7	73.8	1 028.0
2017											
May	595.4	590.4	722.8	718.5	42.0	39.8	5.5	5.2	74.1	73.5	1 032.2
June	595.6	594.8	724.2	726.4	42.0	42.3	5.5	5.5	74.2	74.4	1 032.5
July	595.6	597.2	725.2	724.1	42.4	41.6	5.5	5.4	74.3	74.1	1 033.1
August	595.4	592.1	725.9	718.0	43.0	44.9	5.6	5.9	74.4	73.8	1 033.7
September	595.0	599.0	726.2	727.0	43.7	43.1	5.7	5.6	74.5	74.5	1 034.4
October	593.8	593.8	725.7	726.3	44.3	44.7	5.7	5.8	74.4	74.5	1 034.6
November	591.9	591.3	724.5	724.2	44.7	54.8	5.8	7.0	74.3	75.3	1 034.8
December	589.9	595.0	722.8	726.0	45.3	43.8	5.9	5.7	74.2	74.4	1 035.0
2018											
January	588.8	584.8	721.2	716.6	46.4	46.3	6.0	6.1	74.1	73.7	1 035.7
February	588.9	588.4	720.3	719.1	47.8	46.6	6.2	6.1	74.2	73.9	1 036.3
March	590.5	586.3	720.6	718.3	49.4	56.3	6.4	7.3	74.3	74.7	1 037.0
April	593.2	594.7	721.9	722.2	50.8	51.2	6.6	6.6	74.4	74.6	1 037.3
May	596.3	599.2	724.0	724.9	51.9	53.3	6.7	6.9	74.6	75.0	1 037.6
FEMALES											
May 2015	311.9	324.2	587.6	597.8	34.7	26.9	5.6	4.3	60.8	61.1	1 022.9
May 2016	297.4	289.2	597.1	598.8	38.0	38.8	6.0	6.1	61.6	61.9	1 030.7
2017											
May	312.1	312.2	598.0	601.7	37.6	37.3	5.9	5.8	61.1	61.5	1 039.4
June	314.1	316.0	601.4	602.3	36.8	36.1	5.8	5.7	61.3	61.4	1 040.0
July	314.8	316.3	604.0	603.5	36.8	33.1	5.7	5.2	61.5	61.1	1 041.1
August	314.6	314.4	606.2	607.5	37.2	37.8	5.8	5.9	61.7	61.9	1 042.1
September	314.1	311.0	608.3	606.1	37.7	37.6	5.8	5.8	61.9	61.7	1 043.1
October	313.6	303.0	610.4	600.4	38.2	39.3	5.9	6.1	62.1	61.3	1 043.7
November	312.9	315.6	612.6	611.8	38.5	39.6	5.9	6.1	62.3	62.4	1 044.3
December	311.8	311.4	614.6	616.6	38.7	38.4	5.9	5.9	62.5	62.7	1 044.8
2018											
January	310.2	311.3	615.9	619.2	39.0	35.7	6.0	5.5	62.6	62.6	1 045.7
February	308.2	310.1	616.6	614.0	39.4	39.0	6.0	6.0	62.7	62.4	1 046.6
March	306.3	303.8	616.7	615.4	39.7	41.8	6.1	6.4	62.7	62.7	1 047.5
April	304.9	298.1	616.8	619.7	39.9	41.6	6.1	6.3	62.7	63.1	1 048.2
May	304.6	307.1	617.2	615.1	39.9	37.9	6.1	5.8	62.7	62.3	1 048.9

	EMPLOYED FULL-TIME		EMPLOYED TOTAL		UNEMPLOYED TOTAL		UNEMPLOYMENT RATE		PARTICIPATION RATE		CIVILIAN POPULATION AGED 15 YEARS AND OVER
	Seasonally adjusted		Seasonally adjusted		Seasonally adjusted		Seasonally adjusted		Seasonally adjusted		Original
	Trend		Trend		Trend		Trend		Trend		
	'000	'000	'000	'000	'000	'000	%	%	%	%	
PERSONS											
May 2015	153.4	151.5	239.7	238.5	16.8	17.5	6.6	6.8	60.9	60.7	421.6
May 2016	155.1	153.6	236.5	236.2	16.6	16.0	6.5	6.4	59.6	59.5	423.9
2017											
May	155.4	155.8	245.6	246.4	15.1	15.5	5.8	5.9	60.9	61.2	428.2
June	155.6	156.6	246.7	248.4	15.1	14.6	5.8	5.5	61.1	61.4	428.5
July	155.2	154.7	247.3	246.3	15.2	16.7	5.9	6.3	61.2	61.3	428.9
August	154.5	155.0	247.6	247.4	15.3	15.6	5.9	5.9	61.3	61.3	429.3
September	153.8	153.0	247.6	248.8	15.4	14.6	5.9	5.6	61.2	61.3	429.8
October	153.4	152.4	247.6	245.3	15.5	15.8	5.9	6.1	61.2	60.7	430.1
November	153.4	155.7	247.7	247.8	15.6	15.1	5.9	5.8	61.1	61.1	430.5
December	153.8	154.9	248.0	248.5	15.7	16.2	5.9	6.1	61.2	61.4	430.9
2018											
January	154.6	153.9	248.2	248.4	15.9	13.9	6.0	5.3	61.2	60.8	431.3
February	155.5	155.4	248.4	247.8	16.0	15.8	6.0	6.0	61.2	61.1	431.7
March	156.4	157.1	248.5	248.6	16.2	16.3	6.1	6.1	61.3	61.3	432.0
April	157.3	156.6	248.5	247.2	16.4	15.9	6.2	6.1	61.3	60.9	432.4
May	158.0	158.7	248.5	247.6	16.5	17.4	6.3	6.6	61.4	61.2	432.7
MALES											
May 2015	100.4	99.3	126.9	126.0	9.4	10.4	7.0	7.6	66.0	66.0	206.7
May 2016	101.3	99.5	125.1	124.7	9.1	8.7	6.7	6.5	64.6	64.3	207.5
2017											
May	102.5	102.5	128.5	128.7	8.1	8.3	5.9	6.0	65.2	65.4	209.6
June	102.2	102.7	128.7	129.3	8.2	8.0	6.0	5.8	65.3	65.4	209.7
July	101.5	102.3	128.6	128.8	8.3	8.8	6.2	6.4	65.3	65.6	209.9
August	100.7	100.3	128.3	128.5	8.5	8.8	6.3	6.4	65.2	65.3	210.1
September	99.8	99.2	127.9	127.6	8.6	8.1	6.4	6.0	65.0	64.6	210.3
October	99.1	98.7	127.6	125.9	8.7	9.3	6.5	6.9	64.8	64.2	210.5
November	98.9	98.7	127.4	127.2	8.8	9.0	6.5	6.6	64.7	64.6	210.7
December	98.9	99.6	127.4	127.6	8.9	8.6	6.5	6.3	64.6	64.6	210.9
2018											
January	99.2	98.8	127.5	128.1	9.0	7.2	6.5	5.3	64.6	64.1	211.1
February	99.7	99.5	127.6	127.2	9.1	8.5	6.6	6.3	64.6	64.2	211.3
March	100.2	100.9	127.8	127.6	9.2	9.4	6.6	6.9	64.7	64.8	211.5
April	100.8	99.9	128.0	126.0	9.2	9.0	6.8	6.6	64.8	63.8	211.7
May	101.2	101.9	128.1	128.8	9.3	9.8	6.9	7.0	64.9	65.4	211.8
FEMALES											
May 2015	53.0	52.3	112.7	112.5	7.4	7.1	6.1	5.9	55.9	55.6	214.9
May 2016	53.8	54.1	111.4	111.5	7.4	7.3	6.2	6.2	54.9	54.9	216.4
2017											
May	53.0	53.3	117.1	117.7	7.0	7.2	5.8	5.8	56.8	57.1	218.6
June	53.4	54.0	118.0	119.2	6.9	6.6	5.6	5.3	57.1	57.5	218.8
July	53.7	52.3	118.7	117.5	6.9	7.8	5.5	6.2	57.4	57.2	219.0
August	53.9	54.6	119.3	118.9	6.8	6.8	5.4	5.4	57.5	57.4	219.2
September	54.0	53.8	119.7	121.2	6.8	6.5	5.3	5.1	57.6	58.2	219.4
October	54.3	53.7	120.0	119.5	6.8	6.6	5.3	5.2	57.7	57.4	219.6
November	54.6	57.0	120.3	120.6	6.8	6.1	5.3	4.8	57.8	57.7	219.8
December	55.0	55.2	120.6	120.9	6.8	7.5	5.3	5.9	57.9	58.4	220.0
2018											
January	55.4	55.1	120.7	120.3	6.9	6.7	5.4	5.3	57.9	57.7	220.1
February	55.8	55.9	120.8	120.5	6.9	7.3	5.5	5.7	58.0	58.0	220.3
March	56.2	56.2	120.7	121.0	7.0	6.8	5.5	5.4	58.0	58.0	220.5
April	56.5	56.7	120.6	121.2	7.1	7.0	5.6	5.4	58.0	58.1	220.7
May	56.8	56.8	120.4	118.8	7.2	7.6	5.6	6.0	58.0	57.2	220.9

	EMPLOYED FULL-TIME	EMPLOYED TOTAL	UNEMPLOYED TOTAL	UNEMPLOYMENT RATE	PARTICIPATION RATE	CIVILIAN POPULATION AGED 15 YEARS AND OVER
	<i>Trend</i>	<i>Trend</i>	<i>Trend</i>	<i>Trend</i>	<i>Trend</i>	<i>Original</i>
	'000	'000	'000	%	%	'000
PERSONS						
May 2015	110.1	136.2	6.2	4.4	76.4	186.4
May 2016	109.6	134.6	5.3	3.8	74.8	187.1
2017						
May	108.6	138.7	4.9	3.3	76.1	188.4
June	107.5	137.1	5.1	3.4	75.2	188.7
July	106.8	135.8	5.3	3.6	74.7	188.8
August	106.6	135.2	5.5	3.9	74.5	188.8
September	106.7	135.2	5.7	4.2	74.7	188.9
October	107.1	135.6	5.9	4.4	75.1	188.7
November	107.3	136.2	6.1	4.5	75.6	188.6
December	107.5	136.7	6.1	4.5	75.9	188.4
2018						
January	107.7	137.2	6.2	4.4	76.1	188.5
February	108.2	137.6	6.1	4.2	76.2	188.6
March	108.8	138.1	6.1	4.1	76.3	188.7
April	109.7	138.7	6.0	4.0	76.4	189.1
May	110.5	139.3	5.9	4.0	76.4	189.5
MALES						
May 2015	64.6	72.8	3.5	4.6	80.1	95.4
May 2016	63.1	70.9	3.2	4.3	78.1	94.9
2017						
May	63.6	74.4	2.5	3.1	80.6	95.4
June	62.9	73.4	2.7	3.3	79.6	95.6
July	62.5	72.6	2.8	3.7	78.9	95.6
August	62.5	72.2	2.9	4.0	78.6	95.6
September	62.8	72.1	3.1	4.3	78.8	95.6
October	63.0	72.4	3.2	4.5	79.3	95.5
November	63.3	72.8	3.3	4.5	79.9	95.3
December	63.5	73.2	3.4	4.5	80.4	95.2
2018						
January	63.7	73.4	3.4	4.4	80.6	95.3
February	63.9	73.6	3.4	4.4	80.7	95.3
March	64.1	73.6	3.3	4.3	80.6	95.3
April	64.3	73.7	3.3	4.2	80.5	95.7
May	64.5	73.8	3.2	4.1	80.2	96.0
FEMALES						
May 2015	45.5	63.3	2.7	4.1	72.6	91.0
May 2016	46.5	63.7	2.1	3.3	71.4	92.1
2017						
May	45.0	64.2	2.4	3.5	71.6	93.0
June	44.6	63.6	2.4	3.5	70.8	93.1
July	44.2	63.2	2.5	3.5	70.3	93.2
August	44.1	63.1	2.6	3.8	70.3	93.2
September	44.0	63.1	2.6	4.1	70.5	93.3
October	44.0	63.2	2.7	4.3	70.8	93.3
November	44.0	63.4	2.7	4.4	71.1	93.2
December	44.0	63.5	2.8	4.4	71.3	93.2
2018						
January	44.0	63.7	2.8	4.3	71.4	93.2
February	44.3	64.1	2.8	4.1	71.6	93.3
March	44.8	64.5	2.7	3.9	71.9	93.3
April	45.4	65.0	2.7	3.9	72.2	93.4
May	46.0	65.5	2.7	3.9	72.5	93.5

	EMPLOYED FULL-TIME	EMPLOYED TOTAL	UNEMPLOYED TOTAL	UNEMPLOYMENT RATE	PARTICIPATION RATE	CIVILIAN POPULATION AGED 15 YEARS AND OVER
	<i>Trend</i>	<i>Trend</i>	<i>Trend</i>	<i>Trend</i>	<i>Trend</i>	<i>Original</i>
	'000	'000	'000	%	%	'000
PERSONS						
May 2015	155.3	213.1	10.3	4.5	70.4	317.1
May 2016	159.8	217.9	9.0	3.9	70.4	321.8
2017						
May	159.5	222.3	9.1	4.0	70.5	328.0
June	160.3	223.2	9.2	4.0	70.8	328.3
July	161.4	224.4	9.3	4.0	71.1	328.9
August	162.7	226.0	9.5	4.0	71.4	329.5
September	164.3	227.6	9.5	4.0	71.9	330.0
October	166.0	229.2	9.6	4.0	72.2	330.5
November	167.6	230.4	9.6	4.0	72.5	331.0
December	168.7	230.8	9.5	4.0	72.5	331.5
2018						
January	169.0	230.6	9.4	4.0	72.3	332.0
February	168.8	229.8	9.3	3.9	71.9	332.5
March	168.1	228.6	9.1	3.9	71.5	333.0
April	167.3	227.6	9.0	3.8	71.0	333.4
May	166.7	227.1	8.8	3.7	70.5	333.7
MALES						
May 2015	89.9	109.3	5.2	4.5	74.0	154.6
May 2016	91.0	110.4	5.0	4.3	73.5	156.8
2017						
May	92.4	112.8	4.9	4.2	73.7	159.6
June	93.1	113.1	5.0	4.3	73.9	159.7
July	93.9	113.6	5.2	4.4	74.2	160.0
August	94.8	114.3	5.3	4.4	74.6	160.3
September	95.7	115.2	5.4	4.5	75.1	160.6
October	96.5	116.0	5.4	4.5	75.5	160.8
November	97.2	116.8	5.4	4.5	75.9	161.0
December	97.6	117.3	5.3	4.4	76.1	161.3
2018						
January	97.8	117.4	5.2	4.4	76.0	161.5
February	97.8	117.1	5.1	4.2	75.6	161.7
March	97.7	116.6	4.9	4.0	75.1	161.9
April	97.5	116.1	4.7	3.8	74.6	162.0
May	97.3	115.9	4.6	3.7	74.1	162.2
FEMALES						
May 2015	65.4	103.7	5.1	4.6	66.9	162.4
May 2016	68.9	107.5	4.0	3.5	67.5	165.0
2017						
May	67.1	109.5	4.2	3.7	67.6	168.4
June	67.3	110.1	4.2	3.7	67.8	168.6
July	67.5	110.8	4.2	3.6	68.1	168.9
August	67.9	111.6	4.2	3.6	68.4	169.1
September	68.6	112.5	4.2	3.5	68.8	169.4
October	69.5	113.2	4.2	3.5	69.1	169.7
November	70.4	113.6	4.2	3.5	69.2	170.0
December	71.0	113.6	4.2	3.6	69.2	170.2
2018						
January	71.2	113.2	4.2	3.6	68.9	170.5
February	71.0	112.6	4.2	3.7	68.4	170.8
March	70.4	112.0	4.2	3.7	68.0	171.1
April	69.8	111.5	4.2	3.7	67.6	171.3
May	69.4	111.2	4.2	3.6	67.1	171.5

	EMPLOYED				UNEMPLOYED				LABOUR FORCE
	Full-time	Part-time	Total	Employment to	Looked for full-time work	Looked for part-time work only	Total	Unemployment rate	Participation rate
				population ratio					
	'000	'000	'000	%	'000	'000	'000	%	%
PERSONS									
May 2015	869.8	959.4	1 832.5	58.3	160.9	120.7	281.8	13.3	67.1
May 2016	857.8	999.4	1 858.5	58.8	149.3	113.5	265.8	12.5	67.1
2017									
May	843.1	1 006.9	1 855.5	58.1	152.6	121.1	273.3	12.9	66.5
June	846.5	1 009.9	1 861.2	58.2	151.6	121.7	273.1	12.8	66.7
July	847.4	1 015.8	1 868.1	58.4	150.7	122.0	272.0	12.7	66.8
August	847.2	1 022.9	1 875.3	58.6	149.9	121.9	270.0	12.6	66.9
September	847.4	1 029.2	1 881.5	58.8	149.3	121.5	267.9	12.5	67.1
October	849.7	1 032.8	1 886.3	58.9	148.7	120.9	266.2	12.4	67.2
November	854.5	1 033.8	1 889.5	59.0	148.2	120.0	265.6	12.3	67.3
December	860.6	1 033.5	1 892.0	59.1	147.6	119.1	266.6	12.3	67.5
2018									
January	865.9	1 033.7	1 895.7	59.2	147.0	118.1	268.2	12.4	67.6
February	868.9	1 035.4	1 901.3	59.3	146.4	117.2	269.0	12.4	67.6
March	868.8	1 039.5	1 908.5	59.4	145.8	116.5	267.8	12.3	67.6
April	866.5	1 045.6	1 916.0	59.6	145.2	116.0	264.7	12.3	67.6
May	862.5	1 052.9	1 923.5	59.7	144.7	115.8	260.6	12.2	67.6
MALES									
May 2015	516.2	411.6	927.8	57.8	96.7	60.0	156.7	14.5	67.6
May 2016	497.9	445.7	943.5	58.5	91.4	55.4	146.9	13.4	67.6
2017									
May	507.9	438.0	946.0	58.0	90.2	62.3	152.5	13.9	67.4
June	508.4	440.0	948.4	58.1	89.5	62.5	152.1	13.8	67.4
July	507.1	442.6	949.8	58.2	89.1	62.5	151.6	13.8	67.5
August	505.2	445.1	950.4	58.2	88.9	62.2	151.2	13.7	67.4
September	503.8	446.9	950.8	58.2	88.9	61.7	150.7	13.6	67.4
October	504.0	447.6	951.6	58.2	89.0	61.1	150.1	13.6	67.4
November	506.4	447.0	953.4	58.3	89.1	60.4	149.5	13.6	67.5
December	510.6	445.7	956.3	58.5	89.1	59.6	148.7	13.5	67.6
2018									
January	515.5	444.1	959.7	58.6	89.1	58.8	147.9	13.5	67.8
February	519.8	442.7	962.5	58.7	88.9	58.2	147.1	13.3	67.8
March	522.8	441.6	964.3	58.8	88.6	57.6	146.2	13.2	67.8
April	524.2	441.3	965.5	58.9	88.2	57.2	145.5	13.0	67.7
May	524.5	442.1	966.6	58.9	87.8	57.1	144.9	12.9	67.6
FEMALES									
May 2015	353.6	547.8	901.4	58.6	64.2	60.7	124.9	12.1	66.6
May 2016	359.9	553.7	913.6	59.0	57.8	58.0	115.9	11.4	66.6
2017									
May	335.2	568.9	904.1	57.8	62.4	58.8	121.1	11.9	65.6
June	338.0	570.0	908.0	58.0	62.1	59.1	121.2	11.9	65.8
July	340.3	573.2	913.5	58.3	61.6	59.4	121.0	11.8	66.2
August	342.0	577.8	919.8	58.7	61.0	59.7	120.6	11.7	66.4
September	343.6	582.2	925.8	59.1	60.3	59.8	120.1	11.5	66.7
October	345.7	585.2	930.9	59.4	59.7	59.8	119.4	11.3	66.9
November	348.2	586.8	935.0	59.6	59.0	59.7	118.7	11.2	67.1
December	350.0	587.8	937.9	59.8	58.4	59.5	117.9	11.1	67.3
2018									
January	350.4	589.5	939.9	59.9	57.9	59.3	117.2	11.1	67.4
February	349.1	592.7	941.8	60.0	57.5	59.1	116.6	11.1	67.5
March	346.1	598.0	944.0	60.1	57.2	58.9	116.1	11.0	67.5
April	342.2	604.4	946.6	60.1	57.0	58.8	115.8	11.0	67.5
May	338.0	610.8	948.8	60.2	56.9	58.7	115.6	10.9	67.5

	EMPLOYED			Employment to population ratio %	UNEMPLOYED			LABOUR FORCE		
	Full-time	Part-time	Total		Looked for full-time work	Looked for part-time work only	Total	Unemployment rate	Participation rate	
	'000	'000	'000		'000	'000	'000	'000	%	%
PERSONS										
May 2015	862.3	966.6	1 830.5	58.2	157.9	120.8	283.8	13.5	67.1	
May 2016	862.6	997.3	1 863.0	58.9	145.4	117.3	266.9	12.6	67.2	
2017										
May	850.4	997.1	1 850.9	58.0	141.8	123.4	269.1	12.7	66.1	
June	841.9	997.4	1 853.3	58.1	148.1	128.9	276.9	13.1	66.3	
July	855.3	1 011.4	1 866.6	58.4	140.9	130.4	272.5	12.7	66.9	
August	847.0	1 041.2	1 885.5	58.9	148.4	125.4	272.8	12.6	67.5	
September	846.1	1 046.8	1 901.0	59.3	149.0	119.7	270.6	12.5	67.4	
October	843.4	1 031.9	1 877.2	58.6	150.0	106.8	258.0	12.1	66.6	
November	847.8	1 042.3	1 894.1	59.2	146.6	117.8	266.5	12.4	67.3	
December	862.2	1 033.5	1 890.4	59.1	147.1	119.3	264.7	12.2	67.6	
2018										
January	872.3	1 030.3	1 893.2	59.1	143.5	125.4	267.8	12.3	67.8	
February	891.0	1 009.0	1 901.2	59.2	165.4	121.4	286.4	13.1	68.1	
March	872.4	1 034.2	1 906.3	59.3	165.5	108.2	269.5	12.4	67.8	
April	863.4	1 051.7	1 912.4	59.5	145.5	132.4	274.7	12.5	68.2	
May	856.0	1 070.3	1 931.0	60.1	142.5	107.7	253.3	11.6	67.7	
MALES										
May 2015	514.2	416.2	930.5	58.0	96.7	61.3	158.0	14.5	67.9	
May 2016	500.2	444.6	944.8	58.6	90.0	57.1	147.1	13.5	67.7	
2017										
May	508.9	435.0	943.9	57.9	79.2	66.2	145.3	13.3	66.8	
June	512.3	420.7	933.0	57.2	95.8	58.5	154.4	14.2	66.7	
July	509.7	444.7	954.4	58.5	89.0	64.5	153.5	13.9	67.9	
August	500.5	462.9	963.3	59.0	87.4	62.0	149.3	13.4	68.1	
September	504.5	447.3	951.8	58.2	86.8	64.1	150.9	13.7	67.4	
October	500.6	445.1	945.7	57.9	87.8	52.1	140.0	12.9	66.4	
November	505.2	452.2	957.4	58.6	91.0	56.3	147.4	13.3	67.6	
December	510.8	441.4	952.2	58.3	91.3	63.1	154.4	14.0	67.8	
2018										
January	515.8	448.6	964.4	59.0	84.9	61.9	146.8	13.2	67.9	
February	537.5	427.5	965.0	58.9	93.7	58.4	152.1	13.6	68.2	
March	523.6	438.5	962.1	58.6	99.0	54.6	153.6	13.8	67.9	
April	528.6	443.0	971.6	59.2	89.2	69.4	158.6	14.0	68.8	
May	522.6	444.6	967.2	58.9	85.8	51.8	137.6	12.5	67.3	
FEMALES										
May 2015	348.1	550.4	898.4	58.4	61.2	59.5	120.8	11.8	66.2	
May 2016	362.4	552.7	915.1	59.1	55.5	60.1	115.6	11.2	66.5	
2017										
May	341.4	562.1	903.6	57.8	62.6	57.2	119.8	11.7	65.5	
June	329.7	576.6	906.3	58.0	52.2	70.4	122.6	11.9	65.8	
July	345.6	566.7	912.3	58.3	51.9	66.0	117.9	11.4	65.8	
August	346.5	578.4	924.9	59.0	61.0	63.4	124.5	11.9	66.9	
September	341.6	599.5	941.1	59.9	62.2	55.7	117.8	11.1	67.4	
October	342.8	586.8	929.6	59.3	62.2	54.7	116.9	11.2	66.7	
November	342.6	590.1	932.7	59.5	55.5	61.5	117.0	11.1	67.0	
December	351.4	592.1	943.5	60.3	55.8	56.2	112.0	10.6	67.4	
2018										
January	356.4	581.8	938.2	59.8	58.6	63.5	122.1	11.5	67.6	
February	353.5	581.4	934.9	59.5	71.8	63.0	134.7	12.6	68.1	
March	348.8	595.8	944.5	60.0	66.5	53.6	120.1	11.3	67.7	
April	334.8	608.7	943.5	60.0	56.3	62.9	119.2	11.2	67.6	
May	333.4	625.7	959.1	61.0	56.7	55.8	112.5	10.5	68.2	

	EMPLOYED				UNEMPLOYED				LABOUR FORCE		Not in the labour force (NILF)	Civ. pop. aged 15-24
	Full-time	Part-time	Total	Emp. to pop. ratio	Looked for full-time	Looked for part-time only	Total	Unemp. rate	Total	Part. rate		
	'000	'000	'000	%	'000	'000	'000	%	'000	%	'000	'000
ATTENDING FULL-TIME EDUCATION												
Persons												
May 2015	46.6	650.1	696.6	42.0	30.3	101.1	131.4	15.9	828.0	49.9	829.8	1 657.8
May 2016	37.3	689.3	726.7	42.8	22.7	100.2	122.8	14.5	849.5	50.0	848.6	1 698.1
May 2017	48.0	670.9	719.0	42.0	22.0	97.1	119.1	14.2	838.1	48.9	875.6	1 713.7
May 2018	46.8	718.8	765.6	44.8	22.8	84.6	107.4	12.3	873.0	51.1	836.3	1 709.3
Males												
May 2015	20.8	285.7	306.5	37.9	17.1	50.3	67.5	18.0	374.0	46.3	434.1	808.1
May 2016	19.9	308.9	328.7	39.3	13.3	49.5	62.8	16.0	391.5	46.8	444.5	836.0
May 2017	23.4	296.5	319.8	38.6	8.8	51.3	60.1	15.8	379.9	45.8	449.6	829.5
May 2018	26.9	297.2	324.0	39.1	11.2	41.9	53.1	14.1	377.1	45.5	451.4	828.6
Females												
May 2015	25.8	364.3	390.1	45.9	13.2	50.7	63.9	14.1	454.0	53.4	395.7	849.6
May 2016	17.5	380.5	397.9	46.2	9.4	50.7	60.1	13.1	458.0	53.1	404.1	862.1
May 2017	24.7	374.5	399.1	45.1	13.2	45.8	59.0	12.9	458.1	51.8	426.0	884.2
May 2018	19.9	421.6	441.5	50.1	11.6	42.7	54.3	11.0	495.9	56.3	384.9	880.8
NOT ATTENDING FULL-TIME EDUCATION												
Persons												
May 2015	793.9	343.0	1 136.9	76.5	122.0	16.8	138.8	10.9	1 275.7	85.9	209.6	1 485.2
May 2016	804.7	335.3	1 140.0	77.9	116.9	13.9	130.8	10.3	1 270.8	86.9	191.9	1 462.7
May 2017	783.2	352.5	1 135.7	76.7	113.6	22.4	136.0	10.7	1 271.8	85.9	208.4	1 480.2
May 2018	790.8	378.9	1 169.8	77.8	112.8	19.3	132.1	10.1	1 301.9	86.5	202.5	1 504.4
Males												
May 2015	481.7	145.6	627.3	78.8	76.3	9.0	85.3	12.0	712.5	89.5	83.4	795.9
May 2016	469.8	152.1	621.8	80.1	73.2	5.8	78.9	11.3	700.8	90.3	75.1	775.9
May 2017	475.4	154.3	629.7	78.6	67.1	12.7	79.8	11.2	709.5	88.6	91.2	800.7
May 2018	485.9	163.7	649.5	79.9	70.8	8.2	78.9	10.8	728.5	89.6	84.8	813.3
Females												
May 2015	312.2	197.4	509.6	73.9	45.7	7.8	53.6	9.5	563.2	81.7	126.2	689.3
May 2016	334.9	183.2	518.2	75.4	43.8	8.1	51.9	9.1	570.0	83.0	116.8	686.8
May 2017	307.8	198.3	506.1	74.5	46.5	9.7	56.2	10.0	562.3	82.8	117.2	679.4
May 2018	305.0	215.3	520.2	75.3	42.1	11.1	53.2	9.3	573.4	83.0	117.7	691.1
TOTAL												
Persons												
May 2015	840.4	993.1	1 833.5	58.3	152.3	117.9	270.2	12.8	2 103.7	66.9	1 039.3	3 143.0
May 2016	842.0	1 024.7	1 866.7	59.1	139.6	114.0	253.6	12.0	2 120.3	67.1	1 040.5	3 160.8
May 2017	831.2	1 023.5	1 854.7	58.1	135.6	119.5	255.1	12.1	2 109.8	66.1	1 084.0	3 193.9
May 2018	837.6	1 097.8	1 935.3	60.2	135.7	103.9	239.5	11.0	2 174.9	67.7	1 038.8	3 213.7
Males												
May 2015	502.5	431.3	933.8	58.2	93.4	59.3	152.7	14.1	1 086.5	67.7	517.5	1 604.0
May 2016	489.6	461.0	950.6	59.0	86.4	55.3	141.7	13.0	1 092.3	67.8	519.6	1 611.9
May 2017	498.8	450.7	949.5	58.2	75.9	64.0	139.9	12.8	1 089.4	66.8	540.8	1 630.3
May 2018	512.7	460.9	973.6	59.3	82.0	50.0	132.0	11.9	1 105.6	67.3	536.2	1 641.8
Females												
May 2015	338.0	561.7	899.7	58.5	58.9	58.6	117.5	11.5	1 017.2	66.1	521.8	1 539.0
May 2016	352.4	563.7	916.1	59.1	53.2	58.8	111.9	10.9	1 028.0	66.4	520.9	1 548.9
May 2017	332.5	572.7	905.2	57.9	59.7	55.5	115.2	11.3	1 020.4	65.3	543.2	1 563.6
May 2018	324.9	636.9	961.8	61.2	53.7	53.8	107.5	10.1	1 069.3	68.0	502.6	1 571.9

	EMPLOYED				UNEMPLOYED				LABOUR FORCE		Not in the labour force (NILF)	Civ. pop. aged 15-24
	Full- time	Part- time	Total	Emp. to pop. ratio	Looked for full- time	Looked for part- time only	Total	Unemp. rate	Total	Part. rate		
	'000	'000	'000	%	'000	'000	'000	%	'000	%		
ATTENDING FULL-TIME EDUCATION												
New South Wales	17.4	225.9	243.3	45.1	*5.9	21.3	27.2	10.0	270.5	50.2	268.5	539.0
Victoria	11.4	202.2	213.5	43.4	6.4	20.2	26.7	11.1	240.2	48.9	251.4	491.6
Queensland	9.0	133.5	142.5	45.9	*3.6	17.4	21.0	12.8	163.5	52.7	146.7	310.2
South Australia	3.5	51.0	54.6	43.8	4.1	8.1	12.3	18.3	66.8	53.6	57.9	124.7
Western Australia	*2.8	75.0	77.8	47.8	*1.7	12.4	14.1	15.3	91.9	56.4	70.9	162.8
Tasmania	*0.7	11.8	12.5	39.9	*1.0	3.1	4.0	24.4	16.5	52.7	14.8	31.3
Northern Territory	0.4	4.6	5.0	44.2	*0.1	*0.3	0.4	7.6	5.4	47.8	5.9	11.3
Australian Capital Territory	*1.5	14.9	16.4	42.7	*—	1.9	1.9	10.2	18.2	47.5	20.1	38.4
Australia	46.8	718.8	765.6	44.8	22.8	84.6	107.4	12.3	873.0	51.1	836.3	1 709.3
NOT ATTENDING FULL-TIME EDUCATION												
New South Wales	269.1	119.2	388.3	81.3	27.7	*6.8	34.5	8.2	422.9	88.5	54.9	477.8
Victoria	192.7	85.0	277.8	77.1	22.2	5.4	27.6	9.0	305.4	84.7	55.1	360.5
Queensland	167.3	91.5	258.8	75.5	34.3	*3.9	38.3	12.9	297.1	86.7	45.6	342.6
South Australia	50.0	24.7	74.7	80.8	4.9	*0.7	5.6	6.9	80.3	86.9	12.1	92.4
Western Australia	72.9	43.4	116.3	73.1	18.4	*2.0	20.3	14.9	136.6	85.9	22.4	159.0
Tasmania	16.2	7.9	24.1	74.9	3.1	*0.1	3.2	11.9	27.4	85.0	4.8	32.2
Northern Territory	9.3	3.4	12.7	63.6	1.5	*0.2	1.7	11.9	14.4	72.1	5.6	20.0
Australian Capital Territory	13.2	3.9	17.0	85.7	*0.7	*0.1	*0.9	*4.8	17.9	90.0	2.0	19.9
Australia	790.8	378.9	1 169.8	77.8	112.8	19.3	132.1	10.1	1 301.9	86.5	202.5	1 504.4
TOTAL												
New South Wales	286.5	345.1	631.7	62.1	33.6	28.1	61.7	8.9	693.4	68.2	323.4	1 016.8
Victoria	204.1	287.2	491.3	57.7	28.6	25.7	54.2	9.9	545.6	64.0	306.6	852.1
Queensland	176.4	224.9	401.3	61.5	37.9	21.3	59.2	12.9	460.6	70.5	192.3	652.9
South Australia	53.5	75.7	129.3	59.5	9.1	8.8	17.8	12.1	147.1	67.8	70.0	217.1
Western Australia	75.7	118.3	194.1	60.3	20.0	14.4	34.4	15.1	228.5	71.0	93.3	321.8
Tasmania	17.0	19.6	36.6	57.6	4.1	3.2	7.3	16.6	43.9	69.1	19.7	63.5
Northern Territory	9.8	7.9	17.7	56.6	1.7	0.4	2.1	10.7	19.8	63.4	11.5	31.3
Australian Capital Territory	14.6	18.8	33.4	57.4	*0.7	2.0	2.7	7.5	36.1	62.0	22.1	58.2
Australia	837.6	1 097.8	1 935.3	60.2	135.7	103.9	239.5	11.0	2 174.9	67.7	1 038.8	3 213.7

* estimate is subject to sampling variability too high for most practical purposes

— nil or rounded to zero (including null cells)

LABOUR FORCE STATUS IN MAY 2018

	<i>Employed full-time</i>	<i>Employed part-time</i>	<i>Employed total</i>	<i>Unemployed</i>	<i>Labour force</i>	<i>Not in the labour force (NILF)</i>	<i>Total</i>
<i>Labour force status in April 2018</i>	'000	'000	'000	'000	'000	'000	'000
PERSONS							
Matched sample							
Employed full-time	6 449.9	338.7	6 788.6	30.1	6 818.7	87.8	6 906.4
Employed part-time	359.4	2 721.2	3 080.5	46.6	3 127.2	156.8	3 283.9
Employed total	6 809.2	3 059.9	9 869.1	76.7	9 945.8	244.5	10 190.4
Unemployed	42.1	69.2	111.3	364.4	475.7	125.6	601.3
Labour force	6 851.3	3 129.1	9 980.5	441.1	10 421.5	370.2	10 791.7
Not in the labour force (NILF)	75.6	159.0	234.7	124.2	358.9	5 060.2	5 419.1
Total	6 927.0	3 288.2	10 215.1	565.3	10 780.4	5 430.4	16 210.8
Unmatched sample							
Unmatched in common sample	604.7	270.2	874.9	63.2	938.2	723.9	1 662.0
Incoming rotation group	985.5	498.8	1 484.3	73.2	1 557.6	781.9	2 339.5
Total	1 590.3	769.0	2 359.3	136.5	2 495.7	1 505.8	4 001.5
Civilian population aged 15 years and over	8 517.2	4 057.2	12 574.4	701.7	13 276.1	6 936.1	20 212.3
MALES							
Matched sample							
Employed full-time	4 167.0	141.3	4 308.3	20.3	4 328.5	47.9	4 376.4
Employed part-time	148.9	794.7	943.6	24.6	968.2	52.9	1 021.1
Employed total	4 315.9	936.0	5 251.9	44.9	5 296.8	100.8	5 397.5
Unemployed	27.4	29.6	57.0	195.5	252.5	60.7	313.1
Labour force	4 343.3	965.6	5 308.9	240.4	5 549.2	161.4	5 710.7
Not in the labour force (NILF)	40.1	58.7	98.8	61.8	160.6	2 090.2	2 250.9
Total	4 383.4	1 024.3	5 407.7	302.2	5 709.9	2 251.7	7 961.5
Unmatched sample							
Unmatched in common sample	385.3	91.3	476.6	26.4	503.0	318.7	821.7
Incoming rotation group	631.1	149.4	780.5	36.9	817.4	321.7	1 139.2
Total	1 016.4	240.7	1 257.1	63.3	1 320.4	640.5	1 960.9
Civilian population aged 15 years and over	5 399.9	1 264.9	6 664.8	365.5	7 030.3	2 892.2	9 922.5
FEMALES							
Matched sample							
Employed full-time	2 282.8	197.5	2 480.3	9.8	2 490.1	39.9	2 530.0
Employed part-time	210.5	1 926.4	2 136.9	22.0	2 158.9	103.9	2 262.8
Employed total	2 493.3	2 123.9	4 617.2	31.8	4 649.0	143.8	4 792.8
Unemployed	14.7	39.7	54.4	168.9	223.2	64.9	288.2
Labour force	2 508.0	2 163.6	4 671.6	200.7	4 872.3	208.7	5 081.0
Not in the labour force (NILF)	35.5	100.3	135.9	62.4	198.3	2 970.0	3 168.2
Total	2 543.5	2 263.9	4 807.4	263.1	5 070.5	3 178.7	8 249.2
Unmatched sample							
Unmatched in common sample	219.4	178.9	398.3	36.9	435.2	405.1	840.3
Incoming rotation group	354.4	349.4	703.8	36.3	740.1	460.2	1 200.3
Total	573.8	528.3	1 102.1	73.2	1 175.3	865.3	2 040.6
Civilian population aged 15 years and over	3 117.4	2 792.2	5 909.6	336.3	6 245.8	4 044.0	10 289.8

	EMPLOYED TOTAL		EMPLOYED FULL-TIME		EMPLOYED PART-TIME	
	<i>Trend</i>	<i>Seasonally adjusted</i>	<i>Trend</i>	<i>Seasonally adjusted</i>	<i>Trend</i>	<i>Seasonally adjusted</i>
	millions	millions	millions	millions	millions	millions
PERSONS						
May 2015	1 648.6	1 647.0	1 384.9	1 382.3	263.7	264.6
May 2016	1 662.8	1 670.3	1 388.3	1 398.5	274.4	271.7
2017						
May	1 700.4	1 716.9	1 415.9	1 430.9	284.6	286.0
June	1 707.9	1 716.1	1 423.2	1 430.3	284.7	285.8
July	1 716.0	1 710.4	1 431.0	1 426.2	285.0	284.3
August	1 723.0	1 716.3	1 437.5	1 432.0	285.5	284.4
September	1 727.6	1 728.2	1 441.5	1 442.0	286.1	286.2
October	1 730.0	1 731.8	1 443.1	1 445.0	286.9	286.8
November	1 731.5	1 743.5	1 443.5	1 454.8	288.0	288.6
December	1 733.2	1 736.7	1 443.9	1 446.5	289.3	290.2
2018						
January	1 734.8	1 714.1	1 444.2	1 425.3	290.6	288.8
February	1 737.2	1 736.9	1 445.5	1 445.3	291.8	291.6
March	1 740.7	1 741.3	1 447.7	1 446.9	293.0	294.4
April	1 744.3	1 763.0	1 450.2	1 468.9	294.1	294.1
May	1 747.1	1 738.8	1 452.2	1 443.9	294.9	294.9
MALES						
May 2015	997.6	994.8	918.8	915.7	78.8	79.1
May 2016	998.5	1 006.0	913.1	921.1	85.4	84.9
2017						
May	1 018.6	1 026.7	932.4	939.1	86.2	87.6
June	1 022.2	1 022.3	936.4	938.2	85.8	84.1
July	1 026.6	1 025.3	941.1	939.5	85.5	85.9
August	1 030.3	1 026.0	944.9	941.2	85.4	84.8
September	1 032.2	1 034.4	946.5	948.9	85.6	85.5
October	1 032.6	1 033.4	946.4	947.1	86.3	86.3
November	1 032.5	1 040.6	945.3	953.1	87.1	87.5
December	1 032.3	1 034.0	944.3	946.3	87.9	87.8
2018						
January	1 032.5	1 016.3	944.0	927.8	88.5	88.5
February	1 033.8	1 034.4	944.9	944.7	88.9	89.8
March	1 035.8	1 038.3	946.7	949.0	89.0	89.2
April	1 037.9	1 049.6	948.8	961.0	89.1	88.6
May	1 039.5	1 033.3	950.5	944.8	89.0	88.5
FEMALES						
May 2015	651.0	652.2	466.1	466.7	184.9	185.5
May 2016	664.3	664.2	475.3	477.4	189.0	186.8
2017						
May	681.9	690.2	483.5	491.8	198.4	198.3
June	685.6	693.9	486.8	492.1	198.9	201.7
July	689.4	685.1	489.9	486.7	199.5	198.4
August	692.7	690.3	492.6	490.7	200.1	199.6
September	695.4	693.7	495.0	493.0	200.4	200.7
October	697.4	698.4	496.8	497.9	200.6	200.5
November	699.1	702.9	498.2	501.7	200.8	201.2
December	700.9	702.6	499.6	500.2	201.3	202.4
2018						
January	702.2	697.8	500.2	497.6	202.0	200.2
February	703.5	702.5	500.6	500.7	202.9	201.8
March	705.0	703.0	501.0	497.8	204.0	205.2
April	706.4	713.4	501.4	507.9	205.0	205.5
May	707.6	705.5	501.7	499.0	205.9	206.4

MONTHLY HOURS WORKED IN ALL JOBS

	<i>New South Wales</i>	<i>Victoria</i>	<i>Queensland</i>	<i>South Australia</i>	<i>Western Australia</i>	<i>Tasmania</i>	<i>Northern Territory</i>	<i>Australian Capital Territory</i>	<i>Australia</i>
	millions	millions	millions	millions	millions	millions	millions	millions	millions
TREND									
May 2015	518.8	412.8	335.0	108.9	191.7	31.7	20.8	29.0	1 648.6
May 2016	533.2	421.2	336.5	108.6	181.4	31.5	20.6	29.8	1 662.8
2017									
May	539.1	439.2	341.3	111.9	185.9	32.7	20.2	30.0	1 700.4
June	541.9	440.6	343.3	112.4	186.7	32.8	20.0	30.2	1 707.9
July	545.0	442.0	345.2	112.8	187.8	32.9	19.9	30.5	1 716.0
August	547.5	443.1	347.0	112.9	188.9	33.0	19.9	30.7	1 723.0
September	549.1	443.8	348.6	112.8	189.3	33.0	20.0	31.0	1 727.6
October	549.7	444.5	350.0	112.6	189.0	32.9	20.1	31.3	1 730.0
November	549.7	445.7	351.0	112.5	188.0	32.9	20.2	31.5	1 731.5
December	550.0	447.3	351.5	112.5	186.9	32.9	20.3	31.7	1 733.2
2018									
January	550.8	448.7	351.2	112.7	186.2	33.0	20.4	31.7	1 734.8
February	552.6	449.7	350.7	113.0	186.0	33.1	20.6	31.5	1 737.2
March	555.1	450.6	350.1	113.3	186.3	33.3	20.7	31.4	1 740.7
April	557.8	451.2	349.3	113.7	186.8	33.4	20.9	31.1	1 744.3
May	560.5	451.4	348.5	114.0	187.3	33.5	21.1	30.9	1 747.1

SEASONALLY ADJUSTED

May 2015	517.3	409.1	337.0	109.1	193.3	31.2	np	np	1 647.0
May 2016	534.0	422.6	342.1	108.4	181.2	31.5	np	np	1 670.3
2017									
May	546.9	443.4	346.6	111.5	185.1	33.1	np	np	1 716.9
June	543.5	447.9	342.1	112.7	187.1	33.0	np	np	1 716.1
July	541.6	440.7	343.4	113.6	188.4	32.9	np	np	1 710.4
August	545.1	440.4	346.1	112.9	188.7	32.7	np	np	1 716.3
September	549.1	443.5	348.0	112.5	190.8	32.9	np	np	1 728.2
October	554.6	441.1	352.3	112.6	186.9	33.1	np	np	1 731.8
November	552.0	449.7	352.2	112.8	191.4	33.1	np	np	1 743.5
December	551.3	449.5	350.9	112.3	188.3	33.1	np	np	1 736.7
2018									
January	541.0	445.1	350.3	111.8	181.3	32.6	np	np	1 714.1
February	552.1	450.2	350.2	113.5	185.4	32.8	np	np	1 736.9
March	555.7	449.5	349.8	114.0	186.7	33.0	np	np	1 741.3
April	565.3	456.1	354.6	112.7	188.3	35.0	np	np	1 763.0
May	559.1	448.4	343.3	114.8	188.5	32.7	np	np	1 738.8

np not available for publication but included in totals where applicable, unless otherwise indicated

	UNDEREMPLOYED TOTAL			UNDEREMPLOYMENT RATE			UNDERUTILISATION RATE		
	<i>Trend</i>	<i>Seasonally adjusted</i>	<i>Original</i>	<i>Trend</i>	<i>Seasonally adjusted</i>	<i>Original</i>	<i>Trend</i>	<i>Seasonally adjusted</i>	<i>Original</i>
	'000	'000	'000	%	%	%	%	%	%
PERSONS									
May 2014	975.7	959.6	940.8	8.0	7.8	7.7	14.0	13.8	13.5
May 2015	1 054.3	1 056.7	1 035.6	8.4	8.4	8.3	14.5	14.4	14.1
May 2016	1 064.5	1 063.2	1 044.1	8.4	8.4	8.2	14.1	14.1	13.8
2016									
November	1 105.2	1 065.1	1 091.8	8.7	8.3	8.6	14.4	14.1	13.9
2017									
February	1 120.0	1 138.7	1 137.0	8.7	8.9	8.8	14.4	14.7	15.1
May	1 121.0	1 130.3	1 109.4	8.7	8.7	8.6	14.3	14.3	14.0
August	1 112.5	1 112.0	1 090.5	8.5	8.5	8.4	14.0	14.0	13.9
November	1 105.8	1 095.6	1 122.1	8.4	8.3	8.5	13.9	13.8	13.6
2018									
February	1 113.4	1 104.7	1 103.2	8.4	8.4	8.3	13.9	13.9	14.3
May	1 127.2	1 123.9	1 102.7	8.5	8.5	8.3	13.9	13.9	13.6
MALES									
May 2014	404.5	395.0	387.6	6.1	6.0	5.9	12.0	11.8	11.5
May 2015	437.7	435.8	425.8	6.5	6.5	6.3	12.6	12.4	12.1
May 2016	459.0	460.9	450.0	6.8	6.8	6.6	12.3	12.4	12.1
2016									
November	475.4	451.3	455.7	7.0	6.6	6.7	12.6	12.3	12.1
2017									
February	478.7	479.0	476.3	7.0	7.0	6.9	12.6	12.7	13.0
May	477.0	477.6	464.5	6.9	6.9	6.7	12.4	12.4	12.0
August	472.5	473.4	458.0	6.8	6.8	6.6	12.2	12.2	12.2
November	468.3	463.0	468.8	6.7	6.6	6.7	12.1	12.0	11.8
2018									
February	469.5	470.8	467.6	6.7	6.7	6.6	12.1	12.2	12.5
May	474.3	461.7	448.7	6.7	6.6	6.4	12.0	11.9	11.6
FEMALES									
May 2014	571.2	564.5	553.2	10.1	10.0	9.7	16.2	16.1	15.8
May 2015	616.6	620.8	609.8	10.7	10.7	10.5	16.8	16.7	16.4
May 2016	605.5	602.3	594.1	10.2	10.2	10.0	16.0	16.0	15.8
2016									
November	629.8	613.7	636.0	10.6	10.3	10.7	16.4	16.2	16.0
2017									
February	641.3	659.7	660.7	10.7	11.0	11.0	16.5	17.0	17.6
May	644.0	652.8	644.9	10.7	10.8	10.6	16.3	16.4	16.2
August	640.0	638.6	632.5	10.5	10.4	10.4	16.1	16.1	15.9
November	637.5	632.5	653.3	10.4	10.3	10.6	15.9	15.8	15.6
2018									
February	643.9	633.9	635.6	10.4	10.2	10.2	15.9	15.9	16.4
May	652.9	662.2	654.0	10.5	10.6	10.5	16.0	16.1	15.9

	UNDEREMPLOYED TOTAL			UNDEREMPLOYMENT RATE			UNDERUTILISATION RATE		
	<i>Trend</i>	<i>Seasonally Adjusted</i>	<i>Original</i>	<i>Trend</i>	<i>Seasonally Adjusted</i>	<i>Original</i>	<i>Trend</i>	<i>Seasonally Adjusted</i>	<i>Original</i>
	'000	'000	'000	%	%	%	%	%	%
PERSONS									
New South Wales	333.9	328.8	325.4	8.0	7.8	7.7	12.8	12.8	12.6
Victoria	272.9	272.9	258.5	7.9	7.9	7.5	13.1	13.0	12.3
Queensland	244.3	256.8	254.0	9.2	9.7	9.6	15.4	15.9	15.9
South Australia	86.4	87.5	88.7	9.6	9.8	9.9	15.6	15.5	15.5
Western Australia	134.2	134.1	133.3	9.2	9.3	9.3	15.4	15.6	15.3
Tasmania	26.8	26.4	25.5	10.1	9.9	9.6	16.7	16.7	16.0
Northern Territory	5.7	np	5.3	3.8	np	3.7	7.9	np	7.3
Australian Capital Territory	13.2	np	11.9	5.4	np	5.1	9.0	np	8.3
Australia	1 127.2	1 123.9	1 102.7	8.5	8.5	8.3	13.9	13.9	13.6
MALES									
New South Wales	135.4	132.6	128.3	6.1	6.0	5.8	10.9	10.9	10.5
Victoria	119.8	120.7	112.2	6.5	6.6	6.1	11.2	11.3	10.6
Queensland	101.9	103.6	101.1	7.4	7.5	7.3	13.4	13.6	13.3
South Australia	36.7	35.7	34.6	7.8	7.6	7.4	14.0	13.7	13.4
Western Australia	56.2	55.1	55.2	7.2	7.1	7.1	13.8	13.8	13.4
Tasmania	10.3	10.4	10.3	7.4	7.5	7.4	14.4	14.7	14.3
Northern Territory	2.3	np	2.4	3.0	np	3.1	7.5	np	6.9
Australian Capital Territory	5.7	np	4.7	4.5	np	4.0	8.3	np	7.3
<i>Australia</i>	<i>474.3</i>	<i>461.7</i>	<i>448.7</i>	<i>6.7</i>	<i>6.6</i>	<i>6.4</i>	<i>12.0</i>	<i>11.9</i>	<i>11.6</i>
FEMALES									
New South Wales	198.5	196.1	197.1	10.1	9.9	10.0	14.9	15.0	14.8
Victoria	153.1	152.2	146.3	9.6	9.5	9.1	15.2	14.9	14.4
Queensland	142.4	153.2	153.0	11.3	12.1	12.1	17.6	18.5	18.6
South Australia	49.7	51.8	54.1	11.7	12.2	12.8	17.5	17.6	17.9
Western Australia	78.0	79.1	78.1	11.7	12.0	11.9	17.4	17.8	17.5
Tasmania	16.5	16.1	15.2	13.0	12.6	11.9	19.1	18.9	17.9
Northern Territory	3.3	np	3.0	4.9	np	4.4	8.5	np	7.8
Australian Capital Territory	7.5	np	7.2	6.4	np	6.3	9.9	np	9.4
<i>Australia</i>	<i>652.9</i>	<i>662.2</i>	<i>654.0</i>	<i>10.5</i>	<i>10.6</i>	<i>10.5</i>	<i>16.0</i>	<i>16.1</i>	<i>15.9</i>

np not available for publication but included in totals where applicable, unless otherwise indicated

WHAT IF...? REVISIONS TO TREND ESTIMATES

EFFECT OF NEW SEASONALLY ADJUSTED ESTIMATES ON TREND ESTIMATES

TREND REVISIONS

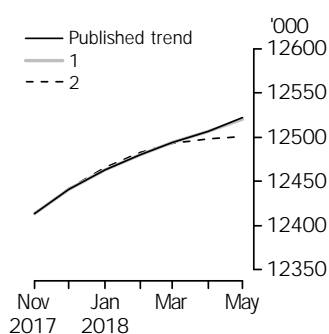
Each time new seasonally adjusted estimates become available, trend estimates are revised. This revision is a combined result of the concurrent seasonal adjustment process and the application of surrogates of the Henderson average to the seasonally adjusted series (see paragraphs 28 to 37 of the Explanatory Notes).

The examples in the tables below show two illustrative scenarios and the consequent revisions to previous trend estimates of employment and the unemployment rate. The revisions in the scenarios are due to the use of surrogates of the Henderson average, as the impact of revision of seasonally adjusted estimates can not be estimated in advance.

- (1) The June seasonally adjusted estimate is *higher* than May by:
 - 0.21% for employment
 - 2.10% for the unemployment rate
- (2) The June seasonally adjusted estimate is *lower* than May by:
 - 0.21% for employment
 - 2.10% for the unemployment rate

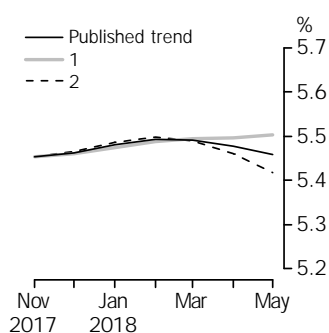
The percentage changes of 0.21% and 2.10% represent the average absolute monthly percentage changes in employment and the unemployment rate respectively. Estimates in the graphs have been calculated using unrounded estimates, and may be different from, but more accurate than, rounded estimates depicted in the corresponding table.

EMPLOYMENT



	Trend as published	WHAT IF NEXT MONTH'S SEASONALLY ADJUSTED ESTIMATE IS:	
		(1) 12 538.1 i.e. rises by 0.21%	(2) 12 485.5 i.e. falls by 0.21%
2018			
February	12 480.0	12 480.5	12 483.0
March	12 493.6	12 494.2	12 493.2
April	12 506.4	12 506.5	12 497.9
May	12 522.3	12 520.4	12 500.7

UNEMPLOYMENT RATE



	Trend as published	WHAT IF NEXT MONTH'S SEASONALLY ADJUSTED ESTIMATE IS:	
		(1) 5.5 i.e. rises by 2.10%	(2) 5.3 i.e. falls by 2.10%
2018			
February	5.5	5.5	5.5
March	5.5	5.5	5.5
April	5.5	5.5	5.5
May	5.5	5.5	5.4

EXPLANATORY NOTES

INTRODUCTION

1 This publication contains estimates of the civilian labour force derived from the Labour Force Survey component of the Monthly Population Survey. The full time series for estimates from this publication are also available electronically. More detailed estimates are released one week after this publication in various electronic formats – see *Labour Force, Australia, Detailed – Electronic Delivery* (cat. no. 6291.0.55.001) and *Labour Force, Australia, Detailed, Quarterly* (cat. no. 6291.0.55.003).

CONCEPTS, SOURCES AND METHODS

2 The conceptual framework used in Australia's Labour Force Survey aligns closely with the standards and guidelines set out in Resolutions of International Conferences of Labour Statisticians. Descriptions of the underlying concepts and structure of Australia's labour force statistics, and the sources and methods used in compiling the estimates, are presented in *Labour Statistics: Concepts, Sources and Methods* (cat. no. 6102.0.55.001) which is available on the ABS website <<http://www.abs.gov.au>>.

LABOUR FORCE SURVEY

3 The Labour Force Survey is based on a multi-stage area sample of private dwellings (currently approximately 26,000 houses, flats, etc.), a list sample of non-private dwellings (hotels, motels, etc.), and covers approximately 0.32% of the civilian population of Australia aged 15 years and over.

4 Information is obtained from the occupants of selected dwellings by specially trained interviewers using computer-assisted interviewing, or self-completion online.

5 Households selected for the Labour Force Survey are interviewed each month for eight months, with one-eighth of the sample being replaced each month. The first interview is generally conducted face-to-face. Subsequent interviews are conducted by telephone (if acceptable to the respondent).

6 From December 2012 to April 2013, the ABS conducted a trial of online electronic data collection. Respondents in a single rotation group (i.e. one-eighth of the survey sample) were offered the option of self completing their labour force survey questionnaire online instead of via a face-to-face or telephone interview. From May 2013, the ABS expanded the offer of online electronic collection to 50% of each new incoming rotation group. For more information see the article in the April 2013 issue of this publication. From September 2013, online electronic collection has been offered to 100% of private dwellings in each incoming rotation group. From April 2014, 100% of private dwellings are being offered online electronic collection.

7 The interviews are generally conducted during the two weeks beginning on the Sunday between the 5th and 11th of each month. The information obtained relates to the week before the interview (i.e. the reference week). Each year, to deal with the operational difficulties involved with collecting and processing the Labour Force Survey around the Christmas and New Year holiday period, interviews for December start four weeks after November interviews start (i.e. between the 3rd and 9th December), and January interviews start five weeks after December interviews start. As a result, January interviewing may commence as early as the 7th or as late as the 13th, depending on the year. Occasionally, circumstances that present significant operational difficulties for survey collection can result in a change to the normal pattern for the start of interviewing.

8 Estimates from the Labour Force Survey are usually published first in this publication 39 days after the commencement of interviews for that month, with the exception of estimates for each December which are usually published 46 days after the commencement of interviews.

EXPLANATORY NOTES *continued*

SCOPE OF SURVEY

9 The Labour Force Survey includes all persons aged 15 years and over except members of the permanent defence forces, certain diplomatic personnel of overseas governments customarily excluded from census and estimated population counts, overseas residents in Australia, and members of non-Australian defence forces (and their dependants) stationed in Australia.

COVERAGE

10 In the Labour Force Survey, coverage rules are applied which aim to ensure that each person is associated with only one dwelling, and hence has only one chance of selection. The coverage rules are necessarily a balance between theoretical and operational considerations. Nevertheless, the chance of a person being enumerated at two separate dwellings in the survey is considered to be negligible.

POPULATION BENCHMARKS

11 The Labour Force Survey estimates are calculated in such a way as to add to independent estimates of the civilian population aged 15 years and over (population benchmarks). These population benchmarks are based on the most recently released estimates of Final, Revised and Preliminary quarterly Estimated Resident Population (ERP). For information on the methodology used to produce the ERP see *Australian Demographic Statistics* (cat. no. 3101.0). Since the most recently released ERP estimates lag the current time period for Labour Force estimates by nine months, the Labour Force population benchmarks are created by projecting forward three quarters past the most recently released quarterly ERP estimates. The projection is based on the historical pattern of each population component - births, deaths, interstate migration and net overseas migration (NOM). Estimates of NOM are supplemented with other data sources to better reflect short-term population changes. These estimates draw on information provided by the Department of Home Affairs.

12 The revision status of quarterly ERP data changes over time from, preliminary, to revised, to final, as natural increase, overseas migration, and interstate migration component data is revised to incorporate more up to date data. These revisions flow through to the population benchmarks used to rebenchmark the Labour Force estimates on a quarterly basis.

13 Every five years, the ERP series are revised to incorporate additional information available from the latest Census of Population and Housing (Census). Labour Force Survey population benchmarks, and the estimates, are revised following this five-yearly revision in the ERP. The process of incorporating the revised population benchmarks is referred to as 'rebasings'. The rebasing process is subject to a revision going from, preliminary rebasing approximately a year after a census, to final rebasing approximately 2 years after a census. Beginning with the November 2017 issue of *Labour Force, Australia* (cat. no. 6202.0) benchmarks have been compiled using ERP preliminary rebased to the 2016 Census. At the same time revisions were made to historical Labour Force estimates from July 2011 to October 2017. In November 2018 the Labour Force series from July 2011 to November 2018 will be rebenchmarking to align with final ERP figures rebased to the 2016 Census. For more information on revised ERP estimates, refer to the December 2016 issue of *Australian Demographic Statistics* (cat. no. 3101.0) released in June 2017.

14 In between Censuses, the ABS revises the Labour Force population benchmarks using the latest ERP according to the paragraphs above. These were introduced in the July 2010, November 2012 and April 2013 issues. The revisions planned for the October 2013, April 2014 and November 2014 issues were not implemented (see What's New in the Labour Force in the September 2013 issue and Changes in this Issue in the October 2014 issue of this publication). From the February 2015 issue, rebenchmarking were undertaken quarterly in the February, May, August and November issues, apart from May 2015. For more information, refer to the article Rebenchmarking of Labour Force Series in the February 2015 issue of this publication.

EXPLANATORY NOTES *continued*

ESTIMATION METHOD

15 The estimation method used in the Labour Force Survey is Composite Estimation, which was introduced in May 2007. In January 2014 composite estimation was applied to all estimates from July 1991 as part of the 2011 Census rebenchmarking. Composite Estimation combines data collected in the previous six months with current month's data to produce the current month's estimates, thereby exploiting the high correlation between overlapping samples across months in the Labour Force Survey. The Composite Estimator combines the previous and current months' data by applying different factors according to length of time in the survey. After these factors are applied, the seven months of data are weighted to align with current month population benchmarks. For details see *Information Paper: Forthcoming Changes to Labour Force Statistics, 2007* (cat. no. 6292.0).

COMPARABILITY OF SERIES

16 From April 1986, the definition of employed persons was changed to include persons who worked without pay between 1 and 14 hours per week in a family business or on a farm (i.e. contributing family workers). For further information, see paragraphs 22 and 23 of the Explanatory Notes in the February 2003 issue of *Labour Force, Australia* (cat. no. 6203.0).

17 The ABS introduced telephone interviewing into the Labour Force Survey in August 1996. Implementation was phased in for each new sample group from August 1996 to February 1997. During the period of implementation, the new method produced different estimates than would have been obtained under the old methodology. The effect dissipated over the final months of implementation and was no longer discernible from February 1997. The estimates for February 1997 and onwards are directly comparable to estimates for periods prior to August 1996. For further details, see the feature article in the June 1997 issue of *Labour Force, Australia* (cat. no. 6203.0).

18 From April 2001 the Labour Force Survey was conducted using a redesigned questionnaire containing additional data items and some minor definitional changes. The definition of unemployed persons was changed to include all persons who were waiting to start work and were available to start in the reference week. This change was introduced in February 2004, when historical unit record data were revised from April 2001 to January 2004. This revision created a small trend break at April 2001 in unemployed persons and unemployment rate series. For further details, see *Information Paper: Forthcoming Changes to Labour Force Statistics, 2003* (cat. no. 6292.0), released in December 2003. From July 2014 the Labour Force Survey questionnaire was further redesigned and definitional changes made to active job search steps and duration of job search. For further details, see the Glossary and *Information Paper: Forthcoming Changes to Labour Force Statistics, June 2014* (cat. no. 6292.0), released in October 2014.

19 Core labour force series were revised in April 2001 for the period April 1986 to March 2001 for the remaining definitional changes introduced with the redesigned questionnaire, to reduce the impact of the changes on labour force series. For further details, see *Information Paper: Implementing the Redesigned Labour Force Survey Questionnaire* (cat. no. 6295.0) and the 2004 issue of *Information Paper: Questionnaires Used in the Labour Force Survey* (cat. no. 6232.0).

20 In May 2007, an improved method of estimation, known as composite estimation, was introduced into the Labour Force Survey. In introducing this change, the ABS revised unit record data from April 2001 to April 2007 based on the new estimation method. No change was identified in the trend breaks in the unemployed persons and unemployment rate series which arose with the introduction of a redesigned survey form in April 2001 (as noted above in paragraph 18). In January 2014 composite estimation was applied to all estimates from July 1991 as part of the 2011 Census rebenchmarking.

EXPLANATORY NOTES *continued*

COMPARABILITY OF SERIES *continued*

For further details, see *Information Paper: Forthcoming Changes to Labour Force Statistics, 2007* (cat. no. 6292.0).

21 As one of a range of ABS savings initiatives for the 2008–09 financial year, there was a 24% reduction in the LFS sample size for the period July 2008 to August 2009, relative to the June 2008 sample size. The sample reduction was reversed from September 2009 to December 2009, with December 2009 estimates being the first produced under the fully reinstated sample.

LABOUR FORCE SURVEY SAMPLE

22 The current Labour Force Survey sample has been selected using information collected in the 2011 Census of Population and Housing.

23 The sample was introduced over four months – May 2013 to August 2013. Two rotation groups (i.e. one-quarter of the survey sample) were introduced each month. During the sample phase-in, the increased sample rotation had an impact on the quality of estimates. Movement standard errors increased by approximately 10%, representing, for example, an increase on the standard error on the Australian monthly change in employment for May 2013 from 27,000 to approximately 29,700.

24 Due to the use of composite estimation, there was a marginal impact on the quality of level estimates. Gross Flows analysis were impacted by the sample phase-in with between 60% to 70% of the sample available for matching between the current and previous months instead of the usual 80%. After full transition to the new sample, the quality of level and movement estimates is at the level designed for under the 2011 sample design and are of similar quality as the 2006 sample design. For further details, see *Information Paper: Labour Force Survey Sample Design* (cat. no. 6269.0) released on 30 May 2013.

RELIABILITY OF ESTIMATES

25 Two types of error are possible in an estimate based on a sample survey: sampling error and non-sampling error.

26 Sampling error occurs because a sample, rather than the entire population, is surveyed. One measure of the likely difference resulting from not including all dwellings in the survey is given by the standard error. There are about two chances in three that a sample estimate will differ by less than one standard error from the figure that would have been obtained if all dwellings had been included in the survey, and about nineteen chances in twenty that the difference will be less than two standard errors. Standard errors of key estimates for the latest month and of movements since the previous month of these estimates are shown in the standard errors section of this publication. Standard errors for other estimates and other movements may be calculated by using the spreadsheet contained in *Labour Force Survey Standard Errors, Data Cube* (cat. no. 6298.0.55.001) which is available free of charge on the ABS website <<http://www.abs.gov.au>>.

27 Non-sampling error arises from inaccuracies in collecting, recording and processing the data. Every effort is made to minimise reporting error by the careful design of questionnaires, intensive training and supervision of interviewers, and efficient data processing procedures. Non-sampling error also arises because information cannot be obtained from all persons selected in the survey. The Australian Labour Force Survey receives a higher level of co-operation from individuals in selected dwellings compared to other countries, with the average response rate over the past 3 years being 93 per cent, and the average rate over the past year being 92.5 per cent (to the nearest quarter of a per cent, in rounded terms). See Glossary for definition of response rate.

28 Any original time series can be thought of as a combination of three broad and distinctly different types of behaviour, each representing the impact of certain types of real world events on the information being collected: systematic calendar related events, short-term irregular fluctuations and long-term cyclical behaviour. A multiplicative decomposition model is applied in the seasonal adjustment of Labour Force Time Series, where the original time series (O) is considered as the product of the underlying trend (T), a systematic calendar related or seasonal component (S) and an irregular component (I). This can be expressed as $O = T \cdot S \cdot I$. The contributions of each of these behaviours varies from series to series, as well as throughout time for a given series, depending on the nature of the interactions of real world events and the data of interest.

29 Seasonal adjustment is a statistical technique that attempts to measure and remove the effects of systematic calendar related patterns including seasonal variation to reveal how a series changes from period to period. Seasonal adjustment does not aim to remove the irregular or non-seasonal influences which may be present in any particular month. This means that month-to-month movements of the seasonally adjusted estimates may not be reliable indicators of trend behaviour.

30 The Labour Force Survey uses the concurrent seasonal adjustment method to derive seasonal factors. Concurrent seasonal adjustment uses data up to the current month to estimate seasonal factors for the current and all previous months. This process can result in revisions each month to estimates for earlier periods. However, in most instances, the only noticeable revisions will be to the seasonally adjusted estimates for the previous month and one year prior to the current month. From the March 2015 issue of this publication, the effects of supplementary surveys are removed prior to the estimation of seasonal factors for key Labour Force series from February 1978 onwards. While this methodology has addressed short term volatility in the seasonally adjusted series arising from changes to the timing and content of the supplementary survey program, in general prior corrections and resulting changed seasonal patterns can be identified and measured to a more reliable degree of certainty after three successive observations (in this case after three years). For further details refer to the October and December 2014 issues of this publication.

31 The revision properties of the seasonally adjusted and trend estimates can be improved by the use of Autoregressive Integrated Moving Average (ARIMA) modelling. ARIMA modelling relies on the characteristics of the series being analysed to project future period data. The projected values are temporary, intermediate values, that are only used internally to improve the estimation of the seasonal factors. The projected data do not affect the original estimates and are discarded at the end of the seasonal adjustment process. The Labour Force Survey uses an ARIMA model for the majority of the individual time series. The ARIMA model is assessed as part of the annual reanalysis. For further details, see the feature article in the October 2004 issue of *Australian Economic Indicators* (cat. no. 1350.0).

32 Seasonal adjustment is able to remove the effect of events which occur at the same time in the survey every year. However, there are some events, like holidays, which are not always at the same time in the survey cycle or which are not at the same time across Australia. The effects of these types of events on Labour Force Survey estimates cannot in all cases be removed, because the pattern of their effects cannot be determined. However, two events for which adjustment is made in the seasonally adjusted series are the January interview start date and the timing of Easter. For further details, see *Information Paper: Forthcoming Changes to Labour Force Statistics* (cat. no. 6292.0) released in December 2003.

EXPLANATORY NOTES *continued*

SEASONAL ADJUSTMENT AND TREND ESTIMATION *continued*

33 While seasonal factors for the complete time series are estimated each month, they will continue to be reviewed annually at a more detailed level to take into account each additional year's original data. This annual review will not normally result in significant changes to published estimates. The review is usually conducted early each year with the results released in this publication shortly thereafter.

34 The smoothing of seasonally adjusted series to produce 'trend' series reduces the impact of the irregular component of the seasonally adjusted series. These trend estimates are derived by applying a 13-term Henderson-weighted moving average to all months except the last six. The last six monthly trend estimates are obtained by applying surrogates of the Henderson average to the seasonally adjusted series. Trend estimates are used to analyse the underlying behaviour of a series over time.

35 While this smoothing technique enables estimates to be produced for the latest month, it does result in revisions in addition to those caused by the revision of seasonally adjusted estimates. Generally, revisions due to the use of surrogates of the Henderson average become smaller, and after three months have a negligible impact on the series.

36 Trend estimates are published for the Northern Territory in table 10 and for the Australian Capital Territory in table 11. Unadjusted series for the two Territories have shown, historically, a high degree of variability, which can lead to considerable revisions to the seasonally adjusted estimates each month when seasonal factors are estimated. For this reason, seasonally adjusted estimates are not currently published for the two Territories. In addition, caution should be exercised in the interpretation of trend estimates for the two Territories, particularly for the three most recent months, where revisions may be relatively large.

37 For further information, see *A Guide to Interpreting Time Series – Monitoring Trends* (cat. no. 1349.0).

RELATED PUBLICATIONS

38 Users may also wish to refer to the following publications and other data products that are available free of charge from the ABS website:

- *Labour Force Survey Standard Products and Data Item Guide* (cat. no. 6103.0)
- *Labour Force, Australia, Detailed* (cat. no. 6291.0.55.001)
- *Labour Force, Australia, Detailed Quarterly* (cat. no. 6291.0.55.003)
- *Labour Force Survey Standard Errors, Data Cube* (cat. no. 6298.0.55.001)
- *Labour force, Australia - Rebenchmarked Estimates* (cat. no. 6202.0.55.003)
- *Labour Statistics: Concepts, Sources and Methods* (cat. no. 6102.0.55.001)
- *Australian Demographic Statistics* (cat. no. 3101.0)
- *Australian Labour Market Statistics* (cat. no. 6105.0)
- *Labour Force, Australia* (cat. no. 6203.0)
- *Information Paper: Outcomes of the Labour Household Surveys Content Review* (cat. no. 6107.0)
- *Information Paper: Questionnaires Used in the Labour Force Survey* (cat. no. 6232.0)
- *Information Paper: Regional Labour Force Statistics* (cat. no. 6262.0)
- *Information Paper: Labour Force Sample Design* (cat. no. 6269.0)
- *Information Paper: Forthcoming Changes to Labour Force Statistics* (cat. no. 6292.0)
- *Information Paper: Expansion of Hours Worked Estimates from the Labour Force Survey* (cat. no. 6290.0.55.001)

39 Current publications and other products released by the ABS are listed on the ABS website <<http://www.abs.gov.au>>. The ABS also issues a daily Release Advice on the website which details products to be released in the week ahead.

EXPLANATORY NOTES *continued*

DATA AVAILABLE ON
REQUEST

40 As well as the statistics included in this and related publications, the ABS may have other relevant data available. Inquiries should be made to the Labour Force contact officer on (02) 6252 6525, email <labourforce@abs.gov.au> or to any ABS office.

EFFECTS OF ROUNDING

41 Estimates have been rounded and discrepancies may occur between sums of the component items and totals. Estimates of movement shown in this publication are obtained by taking the difference of unrounded estimates. The movement estimate is then rounded. Where a discrepancy occurs between the reported movement and the difference of the rounded estimates, the reported movement will be more accurate.

SYMBOLS AND
ABBREVIATIONS

42 SYMBOLS AND ABBREVIATIONS

<i>Symbol</i>	<i>Definition</i>
'000	thousands
%	percentage
ABS	Australian Bureau of Statistics
CAI	computer assisted interviewing
cat. no.	catalogue number
Civ. pop.	civilian population
ERP	estimated resident population
Emp. to pop. ratio	employment to population ratio
f/t	full time
LFS	Labour Force Survey
NILF	not in the Labour Force
Part. rate	participation rate
p/t	part time
pts	percentage points
Seas adj.	seasonally adjusted
TAFE	Technical and Further Education
Unemp. rate	unemployment rate

STANDARD ERRORS

STANDARD ERRORS

The estimates in this publication are based on information gained from the occupants of a sample survey of dwellings. Because the entire population is not surveyed, the published original, seasonally adjusted and trend estimates are subject to sampling error. The most common way of quantifying such sampling error is to calculate the standard error for the published estimate or statistic. For more information, see paragraphs 25 to 27 of the Explanatory Notes.

LEVEL ESTIMATES

To illustrate, let us say the published level estimate for employed persons aged 15–19 years is 700,000 and the associated standard error is 9,000. The standard error is then used to interpret the level estimate of 700,000. For instance, the standard error of 9,000 indicates that:

- There are approximately two chances in three that the real value falls within the range 691,000 to 709,000 (700,000 + or – 9,000)
- There are approximately nineteen chances in twenty that the real value falls within the range 682,000 to 718,000 (700,000 + or – 18,000).

The real value in this case is the result we would obtain if we could enumerate the total population.

The following table shows the standard errors for this month's level estimates.

											AUSTRALIA											
											Males	Females	Persons									
											NSW	Vic.	Qld	SA	WA	Tas.	NT	ACT				
Aged 15 years and over																						
Employed																						
Full time											'000	26.0	19.3	17.4	7.5	11.2	2.9	2.4	2.9	32.3	24.1	39.2
Part time											'000	19.3	13.1	12.4	5.8	8.5	2.3	0.8	2.1	14.5	22.6	28.0
Total											'000	28.6	23.9	20.2	8.7	12.4	3.5	2.9	3.0	35.5	33.7	44.7
Unemployed																						
Looking for f/t work											'000	8.8	7.2	8.5	3.0	4.7	1.1	0.6	0.8	11.5	9.7	15.2
Looking for p/t work											'000	5.6	5.4	5.0	2.0	3.2	0.8	0.3	0.7	6.2	7.8	10.0
Total											'000	10.5	9.1	9.4	3.5	5.8	1.4	0.8	1.1	13.2	12.6	18.4
Labour force											'000	28.9	24.5	20.7	8.9	12.6	3.5	3.0	3.1	36.4	34.6	45.4
Not in labour force											'000	24.4	21.7	22.7	8.2	11.8	3.5	3.0	3.1	31.5	35.9	42.4
Unemployment rate																						
Looking for f/t work											pts	0.3	0.3	0.5	0.5	0.5	0.6	0.6	0.5	0.2	0.3	0.2
Looking for p/t work											pts	0.4	0.5	0.6	0.6	0.7	0.9	1.1	1.0	0.5	0.3	0.2
Total											pts	0.2	0.3	0.4	0.4	0.4	0.5	0.5	0.5	0.2	0.2	0.1
Participation rate											pts	0.4	0.5	0.5	0.6	0.6	0.8	1.6	0.9	0.4	0.3	0.2
Aged 15–19 years																						
Employed																						
Full time											'000	4.1	2.2	2.5	1.1	1.6	0.5	0.2	0.4	5.0	3.5	5.7
Part time											'000	6.0	3.6	4.3	1.8	2.6	0.7	0.2	0.8	6.3	7.5	9.4
Total											'000	7.0	4.1	5.0	2.0	3.0	0.8	0.3	0.8	7.6	7.9	10.7
Unemployed																						
Looking for f/t work											'000	2.4	1.6	3.0	1.0	1.3	0.4	0.2	0.2	3.6	2.7	4.6
Looking for p/t work											'000	3.1	2.5	3.1	1.3	1.9	0.6	0.1	0.5	4.0	4.1	5.8
Total											'000	4.0	2.9	4.5	1.7	2.3	0.7	0.3	0.5	5.4	5.0	7.4
Labour force											'000	7.5	4.4	5.5	2.3	3.3	0.9	0.3	0.9	8.2	8.4	11.6
Not in labour force											'000	9.2	6.2	7.6	2.8	4.0	1.0	0.7	1.3	10.5	9.7	14.7
Unemployment rate																						
Looking for f/t work											pts	3.2	3.7	5.5	6.2	6.1	7.4	7.9	9.9	2.3	4.2	2.1
Looking for p/t work											pts	1.7	1.7	2.2	3.0	2.6	4.2	2.4	4.1	1.6	1.1	0.9
Total											pts	1.5	1.6	2.3	2.9	2.5	3.7	3.4	3.8	1.3	1.2	0.9
Participation rate											pts	1.6	1.2	1.8	2.2	2.2	2.9	2.0	3.6	1.1	1.2	0.8
Unemployment to population ratio – looking for f/t work											pts	0.5	0.4	1.0	1.0	0.9	1.4	1.6	0.7	0.5	0.4	0.3

STANDARD ERRORS *continued*

MOVEMENT ESTIMATES

The following example illustrates how to use the standard error to interpret a movement estimate. Let us say that one month the published level estimate for females employed part-time in Australia is 1,890,000; the next month the published level estimate is 1,900,000 and the associated standard error for the movement estimate is 11,900. The standard error is then used to interpret the published movement estimate of 10,000. For instance, the standard error of 11,900 indicates that:

- There are approximately two chances in three that the real movement between the two months falls within the range – 1,900 to 21,900 (10,000 + or – 11,900)
- There are approximately nineteen chances in twenty that the real movement falls within the range – 13,800 to 33,800 (10,000 + or – 23,800).

The following table shows the standard errors for this month's movement estimates.

											AUSTRALIA										
											Males	Females	Persons								
											NSW	Vic.	Qld	SA	WA	Tas.	NT	ACT			
Aged 15 years and over																					
Employed																					
Full time	'000	15.4	12.7	9.5	3.9	6.5	1.8	1.8	1.9	18.8	14.1	24.1									
Part time	'000	10.2	8.9	6.2	2.9	4.5	1.3	0.9	1.2	9.1	13.3	16.2									
Total	'000	18.8	15.8	13.3	5.8	8.6	2.3	2.1	2.2	21.1	19.7	30.1									
Unemployed																					
Looking for f/t work	'000	8.9	7.4	8.3	3.1	5.2	1.1	0.8	1.0	11.6	10.0	15.4									
Looking for p/t work	'000	6.4	5.6	4.5	2.0	3.5	0.8	0.5	0.8	6.7	7.9	10.5									
Total	'000	10.8	9.4	9.6	3.7	6.2	1.4	0.9	1.3	13.5	12.8	18.9									
Labour force	'000	19.3	16.2	14.3	6.2	9.0	2.3	2.1	2.2	21.7	20.3	31.1									
Not in labour force	'000	18.2	15.7	13.9	5.8	8.6	2.2	2.0	2.4	18.4	22.0	29.8									
Unemployment rate																					
Looking for f/t work	pts	0.3	0.3	0.5	0.5	0.5	0.7	0.7	0.5	0.2	0.3	0.2									
Looking for p/t work	pts	0.5	0.5	0.6	0.7	0.7	0.8	1.3	1.1	0.5	0.3	0.3									
Total	pts	0.3	0.3	0.4	0.4	0.4	0.5	0.7	0.5	0.2	0.2	0.1									
Participation rate	pts	0.3	0.3	0.4	0.4	0.4	0.5	1.1	0.7	0.2	0.2	0.2									
Aged 15–19 years																					
Employed																					
Full time	'000	2.7	2.0	1.7	0.8	1.1	0.3	0.3	0.3	3.5	2.6	3.9									
Part time	'000	4.0	3.3	2.8	1.2	1.9	0.5	0.4	0.5	4.4	5.0	6.2									
Total	'000	4.6	3.7	3.1	1.4	2.1	0.6	0.5	0.6	5.2	5.3	7.0									
Unemployed																					
Looking for f/t work	'000	2.6	2.0	2.9	1.0	1.7	0.4	0.3	0.2	3.9	3.0	4.9									
Looking for p/t work	'000	3.6	3.4	2.8	1.4	2.0	0.6	0.3	0.5	4.7	4.3	6.4									
Total	'000	4.6	3.9	4.0	1.7	2.7	0.7	0.5	0.6	6.1	5.2	8.1									
Labour force	'000	4.9	4.0	3.4	1.5	2.3	0.6	0.5	0.6	5.7	5.6	7.5									
Not in labour force	'000	5.7	5.0	3.7	1.8	2.6	0.7	0.8	0.7	6.9	6.4	9.0									
Unemployment rate																					
Looking for f/t work	pts	3.6	4.3	5.8	6.4	7.5	7.8	8.8	11.5	2.6	4.7	2.3									
Looking for p/t work	pts	1.9	2.1	2.3	3.3	2.8	4.2	4.9	4.3	1.7	1.2	1.0									
Total	pts	1.7	1.9	2.4	3.0	2.7	3.8	4.4	4.1	1.4	1.3	1.0									
Participation rate	pts	1.0	1.1	1.1	1.5	1.5	2.0	3.3	2.5	0.7	0.8	0.5									
Unemployment to population ratio – looking for f/t work	pts	0.6	0.5	0.9	1.0	1.1	1.4	1.8	0.9	0.5	0.4	0.3									

GLOSSARY

Actively looked for work	<p>Actively looked for work includes:</p> <ul style="list-style-type: none">■ written, telephoned or applied to an employer for work;■ had an interview with an employer for work;■ answered an advertisement for a job;■ checked or registered with an employment agency;■ taken steps to purchase or start your own business;■ advertised or tendered for work; and■ contacted friends or relatives in order to obtain work.
Actual hours of work	<p>Actual hours of work refers to a specified reference period (e.g. a week) and includes:</p> <ul style="list-style-type: none">■ hours actually worked during normal periods of work;■ time spent in addition to hours worked during normal periods of work (including overtime);■ time spent at the place of work on activities such as the preparation of the workplace, repairs and maintenance, preparation and cleaning of tools, and the preparation of receipts, time sheets and reports;■ time spent at the place of work waiting or standing by due to machinery or process breakdown, accident, lack of supplies, power or internet access, etc;■ time corresponding to short rest periods (resting time) including tea and coffee breaks or prayer breaks;■ travel time connected to work (excluding commuting time); and■ training and skills enhancement related to the job or employer. <p>Excluded are:</p> <ul style="list-style-type: none">■ hours paid for but not worked, such as paid annual leave, public holidays or paid sick leave;■ meal breaks (e.g. lunch breaks);■ paid and unpaid time 'on call';■ time spent on travel to and from work when no productive activity for the job is performed (e.g. commuting time); and■ time off during working hours to attend outside educational activities, even if it is authorised, e.g. those not connected to the job or employer. <p>For multiple job holders the LFS collects a separate measure of actual hours worked in main job and in all jobs.</p>
Attending full time education	<p>Persons aged 15-24 years enrolled at secondary or high school or enrolled as a full time student at a Technical and Further Education (TAFE) college, university, or other educational institution in the reference week.</p>
Attending school	<p>Persons aged 15-19 years enrolled at secondary or high school in the reference week.</p>
Attending tertiary educational institution full time	<p>Persons aged 15-24 years enrolled full time at a TAFE college, university, or other educational institution in the reference week, except those persons aged 15-19 years who were still attending school.</p>
Civilian population aged 15 years and over	<p>All usual residents of Australia aged 15 years and over except members of the permanent defence forces, certain diplomatic personnel of overseas governments customarily excluded from census and estimated population counts, overseas residents in Australia, and members of non-Australian defence forces (and their dependants) stationed in Australia.</p>
Composite Estimation	<p>The estimation methodology used in the Labour Force Survey. Composite Estimation uses sample responses from nearby months as well as from the reference month to derive estimates for the reference month. This approach achieves gains in efficiency by exploiting the high similarity between the responses provided by the same respondent in previous months. For details see <i>Information Paper: Forthcoming Changes to Labour Force Statistics, 2007</i> (cat. no. 6292.0).</p>
Employed	<p>All persons aged 15 years and over who met one of the following criteria during the</p>

GLOSSARY *continued*

Employed <i>continued</i>	<p>reference week:</p> <ul style="list-style-type: none">■ Worked for one hour or more for pay, profit, commission or payment in kind, in a job or business or on a farm (employees and owner managers of incorporated or unincorporated enterprises).■ Worked for one hour or more without pay in a family business or on a farm (contributing family workers).■ Were employees who had a job but were not at work and were:<ul style="list-style-type: none">■ away from work for less than four weeks up to the end of the reference week; or■ away from work for more than four weeks up to the end of the reference week and received pay for some or all of the four week period to the end of the reference week; or■ away from work as a standard work or shift arrangement; or■ on strike or locked out; or■ on workers' compensation and expected to return to their job.■ Were owner managers who had a job, business or farm, but were not at work.
Employed full-time	Includes employed persons who usually worked 35 hours or more a week (in all jobs) and those who, although usually working less than 35 hours a week, worked 35 hours or more during the reference week.
Employed part-time	Includes employed persons who usually worked less than 35 hours a week (in all jobs) and either did so during the reference week, or were not at work in the reference week.
Employment to population ratio	For any group, the number of employed persons expressed as a percentage of the civilian population in the same group.
Estimated resident population (ERP)	Estimated resident population (ERP), is Australia's official measure of the population of Australia and is based on the concept of usual residence. It refers to all people, regardless of nationality, citizenship or legal status, who usually live in Australia, with the exception of foreign diplomatic personnel and their families. It includes usual residents who are overseas for fewer than 12 months. It excludes overseas visitors who are in Australia for fewer than 12 months. Refer to Australian Demographic Statistics (cat. no. 3101.0).
Flow estimates	Flow estimates are a measure of activity over a given period. For example, monthly hours worked in all jobs is a measure of the total number of hours worked in a calendar month.
Gross flows	<p>The matching of respondents who report in consecutive months enables analysis of the transition of individuals between the different labour force status classifications, referred to as the matched sample. The transition counts between the different labour force status classifications from one point in time to the next are commonly referred to as gross flows.</p> <p>The figures presented in gross flows are presented in original terms only and do not align with published labour force estimates. The gross flows figures are derived from the matched sample between consecutive months, which after taking account of the sample rotation and varying non-response in each month is approximately 80 percent of the sample.</p> <p>Caution should be exercised when analysing these gross flows data due to:</p> <ul style="list-style-type: none">■ the figures presented sum to approximately 80 percent of the population values as the gross flows data are based on the matched sample only;■ there is no adjustment applied to account for changes due to seasonal patterns (referred to commonly as seasonal adjustment); and■ the estimates of relative sizes of each transition class are subject to bias due to the matched sample being a non-representative sample.
Labour force	For any group, persons who were employed or unemployed, as defined.

GLOSSARY *continued*

Labour force status	A classification of the civilian population aged 15 years and over into employed, unemployed or not in the labour force, as defined. The definitions conform closely to the international standard definitions adopted by the International Conferences of Labour Statisticians.
Long-term unemployed	The number of persons unemployed for 52 weeks or over.
Long-term unemployment ratio	The number of long-term unemployed persons, expressed as a percentage of the total unemployed population.
Market sector	The market sector is an industry grouping comprising the following industries: Agriculture, forestry and fishing; Mining; Manufacturing; Electricity, gas, water and waste services; Construction; Wholesale trade; Retail trade; Accommodation and food services; Transport, postal and warehousing; Information media and telecommunications; Finance and insurance services; Rental, hiring and real estate services; Professional, scientific and technical services; Administrative and support services; Arts and recreation services; and Other services. Refer to <i>Australian National Accounts: Concepts, Sources and Methods</i> (cat. no. 5216.0).
Non-market Sector	The non-market sector is an industry grouping comprising the following industries: Education and training; Public administration & safety; and Health care and social assistance. Refer to <i>Australian National Accounts: Concepts, Sources and Methods</i> (cat. no. 5216.0)
Monthly hours worked in all jobs	<p>Monthly hours worked in all jobs measures the total number of actual hours worked by employed persons in a calendar month. It differs from the actual hours worked estimates (and the usual hours worked estimates) since these refer only to the hours worked in the reference week.</p> <p>The methodology used to produce monthly hours worked in all jobs means that these are synthetic estimates. Seasonally adjusted and trend estimates of monthly hours worked in all jobs are available for the period July 1978 onwards.</p> <p>Further information on the methodology used to produce the monthly hours worked in all jobs estimates is available on the ABS website in <i>Information Paper: Expansion of Hours Worked Estimates from the Labour Force Survey</i> (cat. no. 6290.0.55.001).</p> <p>Actual and usual hours worked cannot be aggregated across time to produce either quarterly or annual estimates as they relate to only a single week in the month. In contrast, monthly hours worked in all jobs estimates are a true monthly measure, and may be aggregated across time to produce both quarterly and annual estimates.</p>
Not in labour force	Persons who were not in the categories employed or unemployed, as defined. They include people who undertook unpaid household duties or other voluntary work only, were retired, voluntarily inactive and those permanently unable to work.
Participation rate	For any group, the labour force expressed as a percentage of the civilian population aged 15 years and over in the same group.
Response rate	The number of fully responding dwellings expressed as a percentage of the total number of dwellings excluding sample loss. Examples of sample loss include: dwellings where all persons are out of scope and/or coverage; vacant dwellings; dwellings under construction; dwellings converted to non-dwellings; derelict dwellings; and demolished dwellings.
Seasonally adjusted series	A time series of estimates with the estimated effects of normal seasonal variation removed. See Explanatory Notes for more detail.
Stock estimates	Stock estimates are a measure of certain attributes at a point in time and can be thought of as stocktakes. For example, the total number of employed persons is an account of the number of people who were considered employed in the Labour Force Survey reference week.

GLOSSARY *continued*

Trend series	A smoothed seasonally adjusted series of estimates. See Explanatory Notes for more detail.
Underemployment rate (proportion of labour force)	The number of underemployed workers expressed as a percentage of the labour force.
Underemployment ratio (proportion of employed)	The number of underemployed workers expressed as a percentage of total employed persons.
Underemployed workers	Employed persons aged 15 years and over who want, and are available for, more hours of work than they currently have. They comprise: <ul style="list-style-type: none">■ persons employed part time who want to work more hours and are available to start work with more hours, either in the reference week or in the four weeks subsequent to the survey; or■ persons employed full time who worked part time hours in the reference week for economic reasons (such as being stood down or insufficient work being available). It is assumed that these people wanted to work full time in the reference week and would have been available to do so.
Underutilisation rate	The sum of the number of persons unemployed and the number of persons in underemployment, expressed as a proportion of the labour force.
Unemployed	Persons aged 15 years and over who were not employed during the reference week, and: <ul style="list-style-type: none">■ had actively looked for full time or part time work at any time in the four weeks up to the end of the reference week and were available for work in the reference week; or■ were waiting to start a new job within four weeks from the end of the reference week and could have started in the reference week if the job had been available then.
Unemployed looked for full time work	Unemployed persons who: <ul style="list-style-type: none">■ actively looked for full time work; or■ were waiting to start a new full time job.
Unemployed looked for only part time work	Unemployed persons who: <ul style="list-style-type: none">■ actively looked for part time work only; or■ were waiting to start a new part time job.
Unemployment rate	For any group, the number of unemployed persons expressed as a percentage of the labour force in the same group.
Usual hours of work	Usual hours of work refers to a typical period rather than the hours worked in a specified reference period. The concept of usual hours applies both to persons at work and to persons temporarily absent from work, and is defined as the hours worked during a typical week or day. Actual hours worked (for a specific reference period) may differ from usual hours worked due to illness, vacation, strike, overtime work, a change of job, or similar reasons.

FOR MORE INFORMATION . . .

INTERNET **www.abs.gov.au** the ABS website is the best place for data from our publications and information about the ABS.

INFORMATION AND REFERRAL SERVICE

Our consultants can help you access the full range of information published by the ABS that is available free of charge from our website. Information tailored to your needs can also be requested as a 'user pays' service. Specialists are on hand to help you with analytical or methodological advice.

PHONE 1300 135 070

EMAIL client.services@abs.gov.au

FAX 1300 135 211

POST Client Services, ABS, GPO Box 796, Sydney NSW 2001

FREE ACCESS TO STATISTICS

All statistics on the ABS website can be downloaded free of charge.

WEB ADDRESS www.abs.gov.au