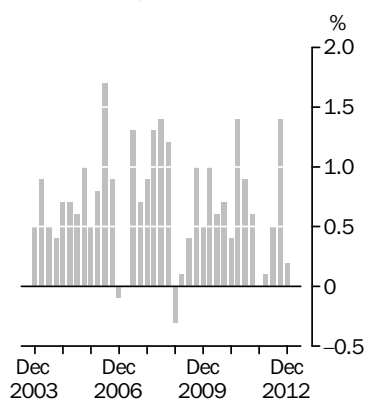


CONSUMER PRICE INDEX

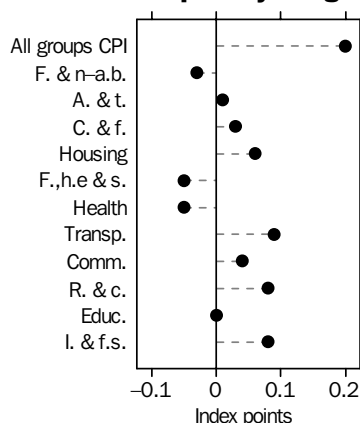
AUSTRALIA

EMBARGO: 11.30AM (CANBERRA TIME) WED 23 JAN 2013

All Groups CPI
Quarterly change



Contribution to quarterly change



KEY FIGURES

WEIGHTED AVERAGE OF EIGHT CAPITAL CITIES

	<i>Sep Qtr 2012 to Dec Qtr 2012</i> % change	<i>Dec Qtr 2011 to Dec Qtr 2012</i> % change
All groups CPI	0.2	2.2
Food and non-alcoholic beverages	-0.1	0.3
Alcohol and tobacco	0.2	3.5
Clothing and footwear	0.8	0.6
Housing	0.2	4.4
Furnishings, household equipment and services	-0.6	0.8
Health	-0.9	7.7
Transport	0.7	2.0
Communication	1.3	1.6
Recreation and culture	0.6	-1.7
Education	0.0	6.1
Insurance and financial services	1.5	3.1
CPI analytical series		
All groups CPI, seasonally adjusted	0.5	2.2
Trimmed mean	0.6	2.3
Weighted median	0.5	2.3

KEY POINTS

THE ALL GROUPS CPI

- rose 0.2% in the December quarter 2012, compared with a rise of 1.4% in the September quarter 2012.
- rose 2.2% through the year to the December quarter 2012, compared with a rise of 2.0% through the year to the September quarter 2012.

OVERVIEW OF CPI MOVEMENTS

- The most significant price rises this quarter were for domestic holiday travel and accommodation (+6.2%), automotive fuel (+2.6%) and rents (+0.8%).
- The most significant price falls this quarter were for vegetables (-5.7%), audio, visual and computing equipment (-4.3%) and pharmaceutical products (-3.5%).

INQUIRIES

For further information about these and related statistics, contact the National Information and Referral Service on 1300 135 070.

NOTES

FORTHCOMING ISSUES

<i>ISSUE (Quarter)</i>	<i>RELEASE DATE</i>
March 2013	24 April 2013
June 2013	24 July 2013
September 2013	23 October 2013
December 2013	22 January 2014

.....

CHANGES IN THIS ISSUE

The CPI Analytical series 'All Groups CPI, seasonally adjusted' and 'Underlying trend series – Trimmed mean and Weighted median' have been revised as a result of the Annual Seasonal Re-analysis (ASR). The ASR reviews the seasonal adjustment of series in more detail than is possible in the quarterly processing cycle. Appendix 1 of this issue presents the outcomes of the ASR and provides a summary of the changes implemented from the December quarter 2012.

Changes to the seasonally adjusted series do not affect the original CPI index series.

For more information about seasonal adjustment see paragraphs 14 to 17 of the Explanatory notes or refer to *Information Paper: Seasonal Adjustment of Consumer Price Indexes, 2011* (cat. no. 6401.0.55.003).

CHANGES IN FUTURE RELEASES

From the March quarter 2013, the time series spreadsheets, 'TABLE 15. CPI: Expenditure Class Index Numbers, Seasonally adjusted, Weighted Average of Eight Capital Cities' and 'TABLE 16. CPI: Expenditure Class, Combined seasonal adjustment factors, Weighted Average of Eight Capital Cities' will change. Index numbers and combined seasonal adjustment factors will be published for all CPI expenditure classes, including those series that are not seasonally adjusted. Previously, index numbers and combined seasonal adjustment factors were published for only those series that are seasonally adjusted. Mock-ups of the new time series spreadsheets are available from the 'Downloads' tab of this issue on the ABS website <<http://www.abs.gov.au>>.

ROUNDING

Any discrepancies between totals and sums of components in this publication are due to rounding.

.....

ABBREVIATIONS

ABS Australian Bureau of Statistics
CPI Consumer Price Index
n.e.c. not elsewhere classified

Brian Pink
Australian Statistician

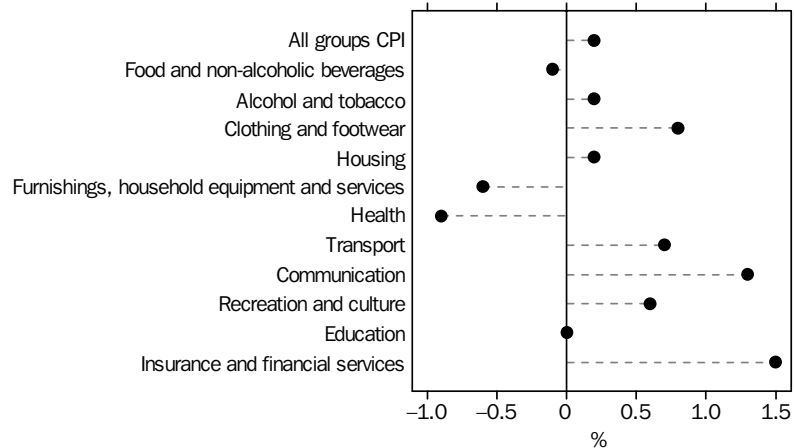
MAIN CONTRIBUTORS TO CHANGE

MAIN CONTRIBUTORS TO CHANGE

CPI GROUPS

The discussion of the CPI groups below is ordered in terms of their absolute significance to the change in All groups index points for the quarter (see tables 6 and 7).

WEIGHTED AVERAGE OF EIGHT CAPITAL CITIES, Percentage change from previous quarter

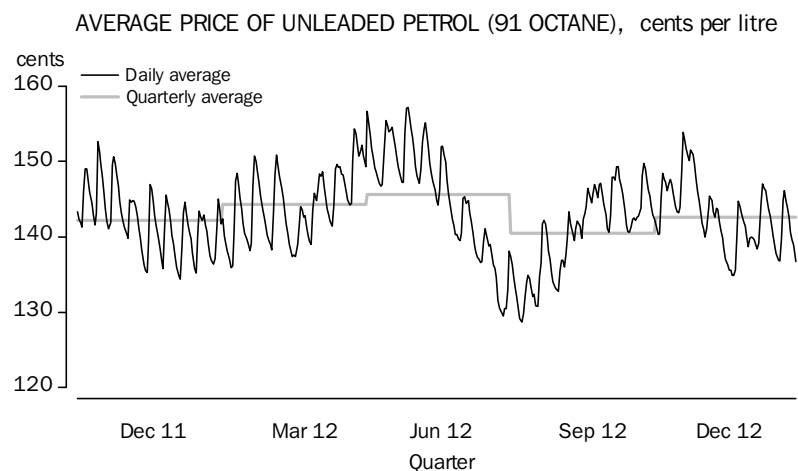


TRANSPORT GROUP (+0.7%)

The transport group rose in the December quarter 2012. The main contributor to the rise was automotive fuel (+2.6%). The rise was partially offset by a fall in motor vehicles (-0.9%).

The average monthly price of automotive fuel rose in August (+5.7%), September (+2.3%) and October (+1.5%), fell in November (-3.5%) and rose in December (+0.4%).

The following graph illustrates the movement of the average daily prices for unleaded petrol for the weighted average of eight capital cities over the last fifteen months.



Over the twelve months to the December quarter 2012, the transport group rose 2.0%. The main contributors to the rise were other services in respect of motor vehicles (+6.8%), maintenance and repair of motor vehicles (+3.7%) and automotive fuel (+1.6%). The rise was partially offset by a fall in motor vehicles (-1.2%).

MAIN CONTRIBUTORS TO CHANGE *continued*

INSURANCE AND FINANCIAL SERVICES GROUP (+1.5%)

The insurance and financial services group rose in the December quarter 2012. The main contributors to the rise were insurance (+2.9%) and other financial services (+1.1%).

Over the twelve months to the December quarter 2012, the insurance and financial services group rose 3.1%. The main contributor to the rise was insurance (+8.5%).

RECREATION AND CULTURE GROUP (+0.6%)

The recreation and culture group rose in the December quarter 2012. The main contributor to the rise was domestic holiday travel and accommodation (+6.2%). The rise was partially offset by falls in audio, visual and computing equipment (-4.3%) and international holiday travel and accommodation (-1.2%).

The rise in domestic holiday travel and accommodation was mainly due to increased accommodation prices during the Christmas and summer school holiday period.

In the CPI, airfares are collected in advance (at the time of payment), but are only used in the CPI in the quarter in which the trip is undertaken. International airfares are collected two months in advance (October for travel in December) and domestic airfares are collected one month in advance (October for travel in November).

Over the twelve months to the December quarter 2012, the recreation and culture group fell 1.7%. The main contributor to the fall was audio, visual and computing equipment (-14.2%).

HOUSING GROUP (+0.2%)

The housing group rose in the December quarter 2012. The main contributors to the rise were rents (+0.8%), maintenance and repair of the dwelling (+0.5%) and new dwelling purchase by owner-occupiers (+0.1%).

Over the twelve months to the December quarter 2012, the housing group rose 4.4% with rises in all categories.

HEALTH GROUP (-0.9%)

The health group fell in the December quarter 2012. The main contributor to the fall was pharmaceutical products (-3.5%), which fell mainly as a result of a greater proportion of consumers exceeding the Pharmaceutical Benefits Scheme safety net compared to the September quarter 2012.

Over the twelve months to the December quarter 2012, the health group rose 7.7%. The main contributors to the rise were medical and hospital services (+9.4%), pharmaceutical products (+5.4%) and dental services (+3.4%).

FURNISHINGS, HOUSEHOLD EQUIPMENT AND SERVICES GROUP (-0.6%)

The furnishings, household equipment and services group fell in the December quarter 2012. The most significant contributors to the fall were furniture (-1.6%), major household appliances (-2.8%) and glassware, tableware and household utensils (-2.8%). The fall was partially offset by a rise in child care (+1.3%).

Over the twelve months to the December quarter 2012, the furnishings, household equipment and services group rose 0.8%. The main contributors to the rise were child care (+8.6%) and other household services (+6.1%). The rise was partially offset by a fall in furniture (-1.6%).

COMMUNICATION GROUP (+1.3%)

The communication group rose in the December quarter 2012. The most significant contributor to the rise was telecommunication equipment and services (+1.3%).

MAIN CONTRIBUTORS TO CHANGE *continued*

COMMUNICATION GROUP (+1.3%) <i>continued</i>	Over the twelve months to the December quarter 2012, the communication group rose 1.6% with rises in telecommunication equipment and services (+1.6%) and postal services (+2.5%).
CLOTHING AND FOOTWEAR GROUP (+0.8%)	<p>The clothing and footwear group rose in the December quarter 2012. The main contributor to the rise was accessories (+6.7%). The rise was partially offset by a fall in garments for women (-1.8%).</p> <p>Over the twelve months to the December quarter 2012, the clothing and footwear group rose 0.6%. The main contributor to the rise was accessories (+6.3%). The rise was partially offset by a fall in garments for women (-2.7%).</p>
FOOD AND NON-ALCOHOLIC BEVERAGES GROUP (-0.1%)	<p>The food and non-alcoholic beverages group fell in the December quarter 2012. The main contributors to the fall were vegetables (-5.7%) and lamb and goat (-10.1%). The fall in vegetables was mainly due to favourable growing and weather conditions. The fall was partially offset by rises in poultry (+6.0%), fruit (+1.7%) and cakes and biscuits (+1.7%).</p> <p>Over the twelve months to the December quarter 2012, the food and non-alcoholic beverages group rose 0.3%. The main contributors to the rise were vegetables (+9.4%) and take away and fast foods (+3.0%). The rise was partially offset by a fall in fruit (-19.0%).</p>
ALCOHOL AND TOBACCO GROUP (+0.2%)	<p>The alcohol and tobacco group rose in the December quarter 2012. The main contributor to the rise was tobacco (+0.9%). The rise was partially offset by a fall in beer (-0.5%).</p> <p>Over the twelve months to the December quarter 2012, the alcohol and tobacco group rose 3.5%, with rises in tobacco (+5.8%), beer (+2.8%), spirits (+2.7%) and wine (+1.8%).</p>
EDUCATION GROUP (0.0%)	<p>The education group recorded no change in the December quarter 2012.</p> <p>Over the twelve months to the December quarter 2012, the education group rose 6.1%, with rises in secondary education (+7.7%), tertiary education (+4.7%) and preschool and primary education (+5.7%).</p>
INTERNATIONAL TRADE EXPOSURE – TRADABLES AND NON-TRADABLES	The tradables component (see Table 8) of the All Groups CPI fell 0.4% in the December quarter 2012. Prices for the goods and services in this component are largely determined on the world market. The tradables component represents approximately 40% of the weight of the CPI. The most significant contributors to the 0.4% fall in the tradeable goods component were vegetables, audio, visual and computing equipment, pharmaceutical products, lamb and goat, furniture and motor vehicles. The most significant offsetting rises in the tradable goods component were for automotive fuel, accessories, fruit, cakes and biscuits and tobacco. The fall in the tradable services component of 1.2% was driven by international holiday travel and accommodation.

MAIN CONTRIBUTORS TO CHANGE *continued*

INTERNATIONAL TRADE EXPOSURE – TRADABLES AND NON-TRADABLES *continued*

The non-tradables component of the All Groups CPI rose 0.7% in the December quarter 2012. Prices for the goods and services in this component are largely determined by domestic price pressures. The non-tradables component represents approximately 60% of the weight of the CPI. The non-tradable goods component rose 0.3% mainly due to poultry, pets and related products, newspaper, magazines and stationery, takeaway and fast foods and new dwelling purchases by owner-occupiers. The most significant offsetting falls were for gas and other household fuels and beer. The non-tradable services component rose 1.0% mainly due to increases in domestic holiday travel and accommodation, rents, insurance, telecommunication equipment and services and other financial services. The most significant offsetting fall was for medical and hospital services.

Over the twelve months to the December quarter 2012, the tradables component fell 0.4% while the non-tradables component rose 3.9%. This compares to a fall of 1.2% and a rise of 4.0% respectively through the year to the September quarter 2012.

A detailed description of which expenditure classes are classified as tradable and non-tradable in the 16th series is shown in Appendix 1 of the September quarter 2011 issue of *Consumer Price Index, Australia* (cat. no 6401.0).

SEASONALLY ADJUSTED ANALYTICAL SERIES

In the December quarter 2012, the All groups CPI, seasonally adjusted rose 0.5%, compared to the unadjusted All groups CPI which recorded a rise of 0.2%.

The trimmed mean rose 0.6% in the December quarter 2012, compared to a rise of 0.7% in the September quarter 2012. Over the twelve months to the December quarter 2012, the trimmed mean rose 2.3% compared to a revised rise of 2.3% over the twelve months to the September quarter 2012.

The weighted median rose 0.5% in the December quarter 2012, compared to a rise of 0.8% in the September quarter 2012. Over the twelve months to the December quarter 2012, the weighted median rose 2.3% compared to a revised rise of 2.4% over the twelve months to the September quarter 2012.

A detailed explanation of the seasonal adjustment of the All Groups CPI is available in Information Paper: *Seasonal Adjustment of Consumer Price Indexes, 2011* (cat. no. 6401.0.55.003) available on the ABS website. This paper includes a description of the seasonal adjustment method applied, the trimmed mean and weighted median.

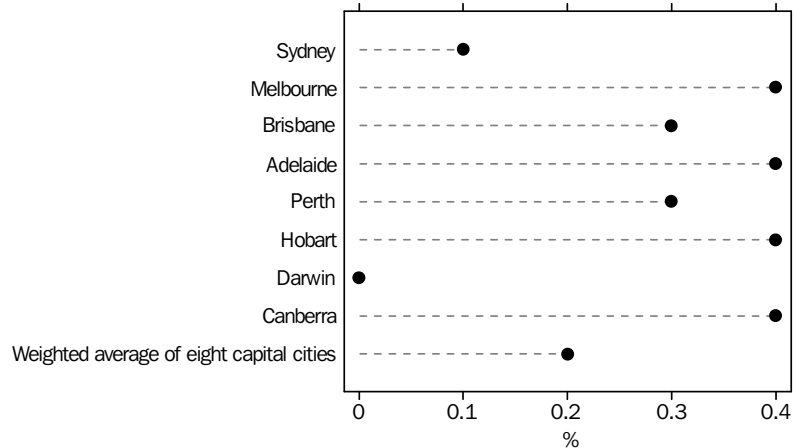
Revisions to the seasonally adjusted estimates can be the result of the application of concurrent seasonal adjustment, described in paragraph 15 of the Explanatory Notes.

CAPITAL CITIES COMPARISON

CAPITAL CITIES COMPARISON

ALL GROUPS CPI

ALL GROUPS CPI, Percentage change from previous quarter



At the all groups level, the CPI rose in seven capital cities during the December quarter 2012. Rises were recorded in Melbourne (+0.4%), Adelaide (+0.4%), Hobart (+0.4%), Canberra (+0.4%), Brisbane (+0.3%), Perth (+0.3%) and Sydney (+0.1%). Darwin recorded no change.

The transport group was the most significant positive contributor to the All groups quarterly movement, recording rises in five capital cities. The largest movement was recorded in Hobart (+2.6%), driven by increases in automotive fuel. Melbourne (+1.6%) and Perth (+1.3%) also rose largely due to increases in automotive fuel and motor vehicles respectively.

The insurance and financial services group was the second largest positive contributor to the All groups quarterly movement, recording rises in all capital cities. The largest movements were recorded in Canberra (+2.2%) and Hobart (+2.1%) mainly due to increases in insurance and other financial services.

The recreation and culture group was also a positive contributor to the All groups quarterly movement, recording rises in seven capital cities. The largest movements were recorded in Melbourne (+1.2%), Brisbane (+0.8%) and Canberra (+0.8%) driven by increases in domestic holiday travel and accommodation. Darwin (-2.1%) was the only city to record a fall in the December quarter 2012.

The health group was the most significant negative contributor to the All groups quarterly movement, recording falls in all capital cities. The fall was mainly due to a greater proportion of consumers exceeding the Pharmaceutical Benefits Scheme safety net resulting in decreases in pharmaceutical products in all cities with falls ranging from 4.5% in Perth to 2.7% in Adelaide and Darwin.

Over the twelve months to the December quarter 2012, the All groups CPI rose in all capital cities with the largest positive movements recorded in Sydney (+2.5%) and Darwin (+2.5%). Hobart (+1.0%) recorded the smallest rise over the twelve months to the December quarter 2012.

CAPITAL CITIES COMPARISON *continued*

ALL GROUPS CPI *continued*

ALL GROUPS CPI, All groups index numbers and percentage changes

	INDEX NUMBER(a)	PERCENTAGE CHANGE	
	<i>Dec Qtr 2012</i>	<i>Sep Qtr 2012 to Dec Qtr 2012</i>	<i>Dec Qtr 2011 to Dec Qtr 2012</i>
Sydney	102.3	0.1	2.5
Melbourne	102.0	0.4	2.1
Brisbane	101.9	0.3	2.2
Adelaide	102.1	0.4	2.1
Perth	101.9	0.3	2.1
Hobart	101.0	0.4	1.0
Darwin	102.0	0.0	2.5
Canberra	101.8	0.4	1.7
Weighted average of eight capital cities	102.0	0.2	2.2

(a) Index reference period: 2011–12 = 100.0.

LIST OF TABLES

page

CONSUMER PRICE INDEX

1	All groups CPI, index numbers	10
2	All groups CPI, percentage changes	11
3	CPI groups, weighted average of eight capital cities, index numbers	12
4	CPI groups, weighted average of eight capital cities, percentage changes	14
5	CPI groups, index numbers	16
6	Contribution to change in All groups CPI	19
7	CPI group, sub-group and expenditure class, weighted average of eight capital cities	22
8	Analytical series, weighted average of eight capital cities	25
9	International comparisons, All groups CPI excluding Housing and Insurance and financial services, index numbers	26
10	International comparisons, All groups CPI excluding Housing and Insurance and financial services, percentage changes	27

ADDITIONAL CPI TABLES AVAILABLE ON ABS WEBSITE

11	CPI group, sub-group and expenditure class, index numbers by capital city	
12	CPI group, sub-group and expenditure class, percentage change from corresponding quarter of previous year by capital city	
13	CPI group, sub-group and expenditure class, percentage change from previous quarter by capital city	
14	CPI group, sub-group and expenditure class, points contribution by capital city	
15	CPI expenditure class, seasonally adjusted index numbers, weighted average of eight capital cities	
16	CPI expenditure class, combined seasonal adjustment factors, weighted average of eight capital cities	

ALL GROUPS CPI, Index numbers(a)

<i>Period</i>	<i>Sydney</i>	<i>Melbourne</i>	<i>Brisbane</i>	<i>Adelaide</i>	<i>Perth</i>	<i>Hobart</i>	<i>Darwin</i>	<i>Canberra</i>	<i>Weighted average of eight capital cities</i>
2008-09	92.6	92.7	92.5	92.4	92.8	92.6	92.5	93.0	92.6
2009-10	94.8	94.6	95.0	94.4	95.2	95.0	95.4	95.0	94.8
2010-11	97.6	97.7	98.1	97.5	97.9	97.8	97.9	97.6	97.7
2011-12	100.0	100.0	100.0	100.0	100.0	100.0	100.0	100.0	100.0
2008									
December	92.4	92.3	92.2	92.2	92.6	92.3	92.1	92.6	92.4
2009									
March	92.5	92.6	92.4	92.2	92.5	92.5	92.2	92.9	92.5
June	92.9	92.9	92.9	92.7	93.3	93.0	93.2	93.5	92.9
September	93.9	93.4	94.2	93.7	94.0	94.1	95.0	94.3	93.8
December	94.4	94.0	94.5	94.1	94.5	94.7	94.9	94.7	94.3
2010									
March	95.2	95.2	95.2	94.6	95.6	95.4	95.4	95.3	95.2
June	95.6	95.8	95.9	95.3	96.5	95.8	96.2	95.6	95.8
September	96.3	96.3	96.9	96.2	96.9	96.8	97.2	96.3	96.5
December	96.7	96.9	97.4	96.5	97.0	96.9	97.1	96.7	96.9
2011									
March	98.2	98.5	98.6	98.1	98.1	98.2	98.2	98.1	98.3
June	99.2	99.2	99.6	99.0	99.4	99.1	99.2	99.2	99.2
September	99.9	99.8	99.9	100.0	99.6	99.9	99.9	99.8	99.8
December	99.8	99.9	99.7	100.0	99.8	100.0	99.5	100.1	99.8
2012									
March	99.9	99.9	99.9	99.9	100.0	100.3	99.9	99.7	99.9
June	100.5	100.4	100.5	100.2	100.5	99.9	100.7	100.3	100.4
September	102.2	101.6	101.6	101.7	101.6	100.6	102.0	101.4	101.8
December	102.3	102.0	101.9	102.1	101.9	101.0	102.0	101.8	102.0

(a) Unless otherwise specified, reference period of each index: 2011-12 = 100.0.

ALL GROUPS CPI, Percentage changes

<i>Period</i>	<i>Sydney</i>	<i>Melbourne</i>	<i>Brisbane</i>	<i>Adelaide</i>	<i>Perth</i>	<i>Hobart</i>	<i>Darwin</i>	<i>Canberra</i>	<i>Weighted average of eight capital cities</i>
PERCENTAGE CHANGE (from previous financial year)									
2008-09	3.0	2.8	3.7	3.1	3.0	2.9	3.4	3.4	3.1
2009-10	2.4	2.0	2.7	2.2	2.6	2.6	3.1	2.2	2.4
2010-11	3.0	3.3	3.3	3.3	2.8	2.9	2.6	2.7	3.1
2011-12	2.5	2.4	1.9	2.6	2.1	2.2	2.1	2.5	2.4
PERCENTAGE CHANGE (from corresponding quarter of previous year)									
2008									
December	3.7	3.1	4.3	3.7	3.7	3.2	3.7	3.8	3.7
2009									
March	2.4	2.1	3.1	2.3	2.2	2.2	2.9	2.7	2.4
June	1.3	1.2	2.0	1.5	1.4	1.6	2.5	2.1	1.4
September	1.3	0.5	1.9	1.3	1.2	1.7	2.7	1.4	1.2
December	2.2	1.8	2.5	2.1	2.1	2.6	3.0	2.3	2.1
2010									
March	2.9	2.8	3.0	2.6	3.4	3.1	3.5	2.6	2.9
June	2.9	3.1	3.2	2.8	3.4	3.0	3.2	2.2	3.1
September	2.6	3.1	2.9	2.7	3.1	2.9	2.3	2.1	2.9
December	2.4	3.1	3.1	2.6	2.6	2.3	2.3	2.1	2.8
2011									
March	3.2	3.5	3.6	3.7	2.6	2.9	2.9	2.9	3.3
June	3.8	3.5	3.9	3.9	3.0	3.4	3.1	3.8	3.5
September	3.7	3.6	3.1	4.0	2.8	3.2	2.8	3.6	3.4
December	3.2	3.1	2.4	3.6	2.9	3.2	2.5	3.5	3.0
2012									
March	1.7	1.4	1.3	1.8	1.9	2.1	1.7	1.6	1.6
June	1.3	1.2	0.9	1.2	1.1	0.8	1.5	1.1	1.2
September	2.3	1.8	1.7	1.7	2.0	0.7	2.1	1.6	2.0
December	2.5	2.1	2.2	2.1	2.1	1.0	2.5	1.7	2.2
PERCENTAGE CHANGE (from previous quarter)									
2008									
December	-0.3	-0.6	-0.2	-0.3	-0.3	-0.2	-0.4	-0.4	-0.3
2009									
March	0.1	0.3	0.2	0.0	-0.1	0.2	0.1	0.3	0.1
June	0.4	0.3	0.5	0.5	0.9	0.5	1.1	0.6	0.4
September	1.1	0.5	1.4	1.1	0.8	1.2	1.9	0.9	1.0
December	0.5	0.6	0.3	0.4	0.5	0.6	-0.1	0.4	0.5
2010									
March	0.8	1.3	0.7	0.5	1.2	0.7	0.5	0.6	1.0
June	0.4	0.6	0.7	0.7	0.9	0.4	0.8	0.3	0.6
September	0.7	0.5	1.0	0.9	0.4	1.0	1.0	0.7	0.7
December	0.4	0.6	0.5	0.3	0.1	0.1	-0.1	0.4	0.4
2011									
March	1.6	1.7	1.2	1.7	1.1	1.3	1.1	1.4	1.4
June	1.0	0.7	1.0	0.9	1.3	0.9	1.0	1.1	0.9
September	0.7	0.6	0.3	1.0	0.2	0.8	0.7	0.6	0.6
December	-0.1	0.1	-0.2	0.0	0.2	0.1	-0.4	0.3	0.0
2012									
March	0.1	0.0	0.2	-0.1	0.2	0.3	0.4	-0.4	0.1
June	0.6	0.5	0.6	0.3	0.5	-0.4	0.8	0.6	0.5
September	1.7	1.2	1.1	1.5	1.1	0.7	1.3	1.1	1.4
December	0.1	0.4	0.3	0.4	0.3	0.4	0.0	0.4	0.2

CPI GROUPS, Weighted average of eight capital cities—Index numbers(a)

<i>Period</i>	<i>Food and non-alcoholic beverages</i>	<i>Alcohol and tobacco</i>	<i>Clothing and footwear</i>	<i>Housing</i>	<i>Furnishings, household equipment and services</i>	<i>Health</i>
2008-09	94.3	84.0	100.9	86.9	97.6	87.9
2009-10	95.8	88.1	100.6	91.9	99.8	92.1
2010-11	99.3	96.7	98.6	96.4	99.7	96.4
2011-12	100.0	100.0	100.0	100.0	100.0	100.0
2008						
December	93.9	83.7	100.7	86.5	96.7	85.3
2009						
March	96.0	84.5	100.2	87.3	97.5	89.0
June	95.1	85.3	102.3	88.0	99.6	91.0
September	94.3	85.9	102.6	90.6	100.2	90.1
December	95.7	86.4	102.8	91.3	100.2	89.3
2010						
March	96.7	87.5	98.4	92.6	98.9	93.5
June	96.4	92.7	98.4	93.2	99.8	95.6
September	95.9	95.5	99.7	95.2	100.6	94.9
December	98.0	96.2	97.9	95.8	100.0	93.7
2011						
March	100.9	97.3	97.2	97.1	98.4	97.4
June	102.3	97.9	99.5	97.5	99.8	99.4
September	102.0	98.4	101.0	99.2	100.1	98.4
December	100.5	99.3	100.4	99.7	100.2	97.1
2012						
March	98.4	100.7	98.6	100.3	99.1	101.5
June	99.0	101.7	100.0	100.7	100.6	103.0
September	100.9	102.6	100.2	103.9	101.6	105.5
December	100.8	102.8	101.0	104.1	101.0	104.6

(a) Unless otherwise specified, reference period of each index: 2011-12 = 100.0.

<i>Period</i>	<i>Transport</i>	<i>Communication</i>	<i>Recreation and culture</i>	<i>Education</i>	<i>Insurance and financial services</i>	<i>All groups CPI</i>
2008–09	94.1	98.7	101.2	84.5	95.0	92.6
2009–10	94.8	99.0	101.6	89.2	93.0	94.8
2010–11	96.9	98.9	100.5	94.4	96.0	97.7
2011–12	100.0	100.0	100.0	100.0	100.0	100.0
2008						
December	92.7	98.5	101.9	82.2	98.4	92.4
2009						
March	91.3	98.9	100.7	86.7	92.2	92.5
June	92.8	99.1	100.7	86.7	90.7	92.9
September	94.6	99.1	101.4	86.8	91.5	93.8
December	93.8	99.1	102.9	86.8	92.2	94.3
2010						
March	95.0	99.0	101.9	91.6	94.1	95.2
June	95.7	98.9	100.1	91.7	94.2	95.8
September	95.1	98.7	100.8	91.8	94.7	96.5
December	95.4	98.7	101.0	91.8	94.3	96.9
2011						
March	97.9	98.8	100.4	97.0	96.7	98.3
June	99.1	99.3	99.8	97.1	98.2	99.2
September	99.2	99.2	100.7	97.1	98.9	99.8
December	99.2	100.3	101.5	97.1	99.6	99.8
2012						
March	100.3	100.4	99.5	102.9	100.5	99.9
June	101.3	100.1	98.3	102.9	101.0	100.4
September	100.5	100.6	99.2	103.0	101.2	101.8
December	101.2	101.9	99.8	103.0	102.7	102.0

(a) Unless otherwise specified, reference period of each index: 2011–12 = 100.0.

CPI GROUPS, Weighted average of eight capital cities—Percentage changes

	<i>Food and non-alcoholic beverages</i>	<i>Alcohol and tobacco</i>	<i>Clothing and footwear</i>	<i>Housing</i>	<i>Furnishings, household equipment and services</i>	<i>Health</i>
PERCENTAGE CHANGE (from previous financial year)						
2008-09	4.9	5.4	0.9	5.8	1.5	5.1
2009-10	1.6	4.9	-0.3	5.8	2.3	4.8
2010-11	3.7	9.8	-2.0	4.9	-0.1	4.7
2011-12	0.7	3.4	1.4	3.7	0.3	3.7
PERCENTAGE CHANGE (from corresponding quarter of previous year)						
2008						
December	5.6	5.8	0.2	6.4	0.4	4.9
2009						
March	5.7	5.6	2.1	5.4	2.0	5.3
June	4.9	4.8	1.3	5.1	2.5	5.1
September	2.5	4.0	2.3	5.6	3.9	4.3
December	1.9	3.2	2.1	5.5	3.6	4.7
2010						
March	0.7	3.6	-1.8	6.1	1.4	5.1
June	1.4	8.7	-3.8	5.9	0.2	5.1
September	1.7	11.2	-2.8	5.1	0.4	5.3
December	2.4	11.3	-4.8	4.9	-0.2	4.9
2011						
March	4.3	11.2	-1.2	4.9	-0.5	4.2
June	6.1	5.6	1.1	4.6	0.0	4.0
September	6.4	3.0	1.3	4.2	-0.5	3.7
December	2.6	3.2	2.6	4.1	0.2	3.6
2012						
March	-2.5	3.5	1.4	3.3	0.7	4.2
June	-3.2	3.9	0.5	3.3	0.8	3.6
September	-1.1	4.3	-0.8	4.7	1.5	7.2
December	0.3	3.5	0.6	4.4	0.8	7.7
PERCENTAGE CHANGE (from previous quarter)						
2008						
December	2.1	1.3	0.4	0.8	0.3	-1.3
2009						
March	2.2	1.0	-0.5	0.9	0.8	4.3
June	-0.9	0.9	2.1	0.8	2.2	2.2
September	-0.8	0.7	0.3	3.0	0.6	-1.0
December	1.5	0.6	0.2	0.8	0.0	-0.9
2010						
March	1.0	1.3	-4.3	1.4	-1.3	4.7
June	-0.3	5.9	0.0	0.6	0.9	2.2
September	-0.5	3.0	1.3	2.1	0.8	-0.7
December	2.2	0.7	-1.8	0.6	-0.6	-1.3
2011						
March	3.0	1.1	-0.7	1.4	-1.6	3.9
June	1.4	0.6	2.4	0.4	1.4	2.1
September	-0.3	0.5	1.5	1.7	0.3	-1.0
December	-1.5	0.9	-0.6	0.5	0.1	-1.3
2012						
March	-2.1	1.4	-1.8	0.6	-1.1	4.5
June	0.6	1.0	1.4	0.4	1.5	1.5
September	1.9	0.9	0.2	3.2	1.0	2.4
December	-0.1	0.2	0.8	0.2	-0.6	-0.9

	<i>Transport</i>	<i>Communication</i>	<i>Recreation and culture</i>	<i>Education</i>	<i>Insurance and financial services</i>	<i>All groups CPI</i>
PERCENTAGE CHANGE (from previous financial year)						
2008-09	-0.9	0.8	1.1	5.0	1.9	3.1
2009-10	0.7	0.3	0.4	5.6	-2.1	2.4
2010-11	2.2	-0.1	-1.1	5.8	3.2	3.1
2011-12	3.2	1.1	-0.5	5.9	4.2	2.4
PERCENTAGE CHANGE (from corresponding quarter of previous year)						
2008						
December	-1.3	0.6	1.3	4.7	7.0	3.7
2009						
March	-4.6	1.0	0.5	5.1	-1.4	2.4
June	-5.9	1.2	0.7	5.0	-6.5	1.4
September	-5.0	1.0	0.1	5.6	-7.3	1.2
December	1.2	0.6	1.0	5.6	-6.3	2.1
2010						
March	4.1	0.1	1.2	5.7	2.1	2.9
June	3.1	-0.2	-0.6	5.8	3.9	3.1
September	0.5	-0.4	-0.6	5.8	3.5	2.9
December	1.7	-0.4	-1.8	5.8	2.3	2.8
2011						
March	3.1	-0.2	-1.5	5.9	2.8	3.3
June	3.6	0.4	-0.3	5.9	4.2	3.5
September	4.3	0.5	-0.1	5.8	4.4	3.4
December	4.0	1.6	0.5	5.8	5.6	3.0
2012						
March	2.5	1.6	-0.9	6.1	3.9	1.6
June	2.2	0.8	-1.5	6.0	2.9	1.2
September	1.3	1.4	-1.5	6.1	2.3	2.0
December	2.0	1.6	-1.7	6.1	3.1	2.2
PERCENTAGE CHANGE (from previous quarter)						
2008						
December	-6.9	0.4	0.6	0.0	-0.3	-0.3
2009						
March	-1.5	0.4	-1.2	5.5	-6.3	0.1
June	1.6	0.2	0.0	0.0	-1.6	0.4
September	1.9	0.0	0.7	0.1	0.9	1.0
December	-0.8	0.0	1.5	0.0	0.8	0.5
2010						
March	1.3	-0.1	-1.0	5.5	2.1	1.0
June	0.7	-0.1	-1.8	0.1	0.1	0.6
September	-0.6	-0.2	0.7	0.1	0.5	0.7
December	0.3	0.0	0.2	0.0	-0.4	0.4
2011						
March	2.6	0.1	-0.6	5.7	2.5	1.4
June	1.2	0.5	-0.6	0.1	1.6	0.9
September	0.1	-0.1	0.9	0.0	0.7	0.6
December	0.0	1.1	0.8	0.0	0.7	0.0
2012						
March	1.1	0.1	-2.0	6.0	0.9	0.1
June	1.0	-0.3	-1.2	0.0	0.5	0.5
September	-0.8	0.5	0.9	0.1	0.2	1.4
December	0.7	1.3	0.6	0.0	1.5	0.2

Quarters	Sydney	Melbourne	Brisbane	Adelaide	Perth	Hobart	Darwin	Canberra	Weighted average of eight capital cities
FOOD AND NON-ALCOHOLIC BEVERAGES									
2010									
December	98.6	97.9	98.1	98.1	96.8	98.5	97.9	96.8	98.0
2011									
March	101.5	100.5	101.4	101.0	99.6	100.4	100.4	100.2	100.9
June	102.5	102.0	102.5	102.4	102.5	101.6	101.5	102.4	102.3
September	102.3	101.8	101.9	102.4	102.0	101.9	102.2	102.4	102.0
December	100.6	100.7	100.4	100.4	100.6	100.6	99.7	99.8	100.5
2012									
March	98.3	98.3	98.7	98.1	98.4	98.7	98.8	98.2	98.4
June	98.8	99.2	99.0	99.2	99.0	98.8	99.2	99.6	99.0
September	101.5	100.6	101.0	100.3	100.5	100.1	101.0	100.9	100.9
December	100.9	101.3	100.6	100.2	100.1	100.1	100.8	99.9	100.8
ALCOHOL AND TOBACCO									
2010									
December	95.8	96.4	96.5	96.6	96.5	95.6	94.3	96.5	96.2
2011									
March	97.5	96.8	97.5	97.6	97.5	96.7	95.6	97.0	97.3
June	98.3	97.6	98.2	98.3	97.4	97.1	96.6	97.2	97.9
September	98.5	98.1	98.7	98.6	98.5	98.9	97.7	97.6	98.4
December	99.1	99.2	99.5	99.5	99.4	99.1	98.8	99.7	99.3
2012									
March	100.7	100.9	100.3	100.5	100.7	100.5	101.4	100.5	100.7
June	101.7	101.8	101.5	101.4	101.4	101.5	102.2	102.2	101.7
September	102.6	102.4	102.9	102.6	102.2	103.2	103.3	103.7	102.6
December	102.5	102.6	103.5	102.8	102.5	103.7	104.1	103.5	102.8
CLOTHING AND FOOTWEAR									
2010									
December	97.9	98.0	99.2	96.1	95.9	99.9	99.6	96.6	97.9
2011									
March	97.8	96.4	98.1	95.7	95.5	97.2	100.5	97.8	97.2
June	98.5	98.3	100.5	100.0	102.8	99.9	99.5	101.7	99.5
September	100.3	101.3	102.1	102.2	100.5	98.7	99.5	100.4	101.0
December	99.0	102.6	99.5	101.7	98.2	102.0	100.9	100.6	100.4
2012									
March	99.4	98.1	98.1	97.9	98.3	99.9	99.8	98.5	98.6
June	101.2	98.0	100.3	98.2	103.1	99.4	99.8	100.5	100.0
September	101.7	97.9	102.7	97.3	101.6	97.4	99.3	98.9	100.2
December	101.0	99.9	103.8	99.6	103.2	97.8	99.9	98.4	101.0
HOUSING									
2010									
December	95.0	95.7	97.9	94.3	96.6	95.5	97.7	96.4	95.8
2011									
March	96.0	97.9	98.3	96.9	96.8	97.2	98.1	97.2	97.1
June	96.8	98.0	98.9	96.1	97.2	97.5	98.2	97.4	97.5
September	99.1	99.6	99.6	98.7	98.8	99.8	99.2	99.5	99.2
December	99.8	99.5	99.9	99.9	99.6	100.0	99.5	100.0	99.7
2012									
March	100.1	100.5	100.0	101.1	100.3	100.3	100.2	100.1	100.3
June	101.0	100.4	100.5	100.3	101.3	99.9	101.1	100.4	100.7
September	104.3	103.2	103.7	104.9	103.9	101.6	103.0	103.9	103.9
December	105.1	102.4	104.5	105.4	104.5	101.8	103.4	104.2	104.1

(a) Unless otherwise specified, reference period of each index: 2011-12 = 100.0.

Quarters	Sydney	Melbourne	Brisbane	Adelaide	Perth	Hobart	Darwin	Canberra	Weighted average of eight capital cities
FURNISHINGS, HOUSEHOLD EQUIPMENT AND SERVICES									
2010									
December	99.9	100.2	99.9	99.5	100.2	99.7	99.9	99.3	100.0
2011									
March	98.3	98.6	98.4	98.4	98.4	99.0	100.5	97.9	98.4
June	99.9	99.7	100.2	99.9	100.0	99.4	100.0	98.9	99.8
September	100.5	100.0	99.8	100.8	99.9	100.0	99.8	99.3	100.1
December	100.1	100.8	99.5	99.9	100.1	99.9	99.8	99.9	100.2
2012									
March	99.0	99.0	99.3	98.8	99.5	99.4	99.4	99.6	99.1
June	100.4	100.3	101.4	100.4	100.5	100.7	101.1	101.1	100.6
September	101.4	102.3	101.3	101.1	101.7	100.1	101.5	100.8	101.6
December	100.3	102.3	101.0	100.3	100.3	99.0	102.1	102.7	101.0
HEALTH									
2010									
December	93.4	94.0	93.5	93.9	94.2	94.2	94.7	92.8	93.7
2011									
March	96.9	97.8	98.1	96.5	97.6	97.7	97.6	97.8	97.4
June	99.3	99.4	99.6	99.5	99.5	99.7	99.0	98.6	99.4
September	98.4	98.2	98.5	98.6	98.3	98.7	99.4	98.4	98.4
December	97.1	97.1	97.1	97.6	97.1	97.4	98.4	96.8	97.1
2012									
March	101.4	101.7	101.6	100.7	101.6	100.9	100.2	101.9	101.5
June	103.1	103.0	102.8	103.1	103.0	103.0	102.0	102.9	103.0
September	105.4	105.3	105.1	106.7	106.0	106.1	102.0	104.6	105.5
December	104.5	104.6	104.3	106.2	104.7	105.1	101.5	103.1	104.6
TRANSPORT									
2010									
December	95.5	95.8	94.7	94.3	95.8	95.6	94.1	95.4	95.4
2011									
March	98.3	98.0	97.0	96.9	98.9	97.8	95.9	97.6	97.9
June	99.2	99.0	98.5	98.7	99.9	99.8	98.3	99.3	99.1
September	99.5	99.1	98.8	98.9	99.6	99.6	98.9	99.1	99.2
December	99.0	98.8	99.6	99.8	99.6	99.5	99.4	100.5	99.2
2012									
March	100.6	99.7	100.8	100.6	100.2	100.3	100.7	99.9	100.3
June	100.9	102.4	100.7	100.7	100.6	100.6	101.0	100.5	101.3
September	100.6	100.9	100.5	100.0	99.6	99.3	101.6	100.1	100.5
December	100.6	102.5	100.2	100.6	100.9	101.9	100.7	101.1	101.2
COMMUNICATION									
2010									
December	98.7	98.7	98.7	98.7	98.6	98.7	98.6	98.7	98.7
2011									
March	98.8	98.9	98.9	98.8	98.8	98.9	98.8	98.8	98.8
June	99.2	99.3	99.3	99.3	99.2	99.3	99.3	99.2	99.3
September	99.2	99.3	99.2	99.2	99.2	99.2	99.3	99.2	99.2
December	100.3	100.3	100.3	100.3	100.3	100.3	100.3	100.3	100.3
2012									
March	100.4	100.4	100.4	100.4	100.4	100.4	100.4	100.4	100.4
June	100.1	100.1	100.1	100.1	100.1	100.1	100.1	100.1	100.1
September	100.6	100.6	100.6	100.6	100.6	100.6	100.6	100.6	100.6
December	101.9	101.9	102.0	101.9	101.7	101.9	101.8	101.9	101.9

(a) Unless otherwise specified, reference period of each index: 2011-12 = 100.0.

Quarters	Sydney	Melbourne	Brisbane	Adelaide	Perth	Hobart	Darwin	Canberra	Weighted average of eight capital cities
RECREATION AND CULTURE									
2010									
December	101.2	100.5	101.8	101.3	101.2	98.9	101.0	100.3	101.0
2011									
March	100.6	100.8	100.4	99.9	99.8	98.4	99.4	99.5	100.4
June	100.0	99.5	100.0	100.1	99.9	98.1	102.1	99.6	99.8
September	100.6	100.5	101.4	101.5	100.1	99.9	103.0	100.8	100.7
December	101.6	101.6	100.9	101.3	101.6	101.1	99.9	102.1	101.5
2012									
March	99.4	99.8	99.0	98.8	100.2	101.8	97.6	98.9	99.5
June	98.4	98.0	98.7	98.4	98.1	97.2	99.5	98.3	98.3
September	99.3	98.8	99.6	99.5	98.9	97.5	102.0	99.3	99.2
December	99.8	100.0	100.4	99.9	99.1	97.9	99.9	100.1	99.8
EDUCATION									
2010									
December	92.0	91.4	91.7	91.7	91.9	93.8	93.5	92.5	91.8
2011									
March	97.4	97.1	96.3	96.9	96.7	97.4	97.2	97.3	97.0
June	97.5	97.1	96.3	96.9	96.7	97.4	97.2	97.3	97.1
September	97.5	97.1	96.3	96.9	96.7	97.6	97.2	97.5	97.1
December	97.6	97.2	96.4	96.9	96.7	97.6	97.2	97.5	97.1
2012									
March	102.4	102.8	103.6	103.1	103.3	102.4	102.8	102.5	102.9
June	102.5	102.8	103.7	103.1	103.3	102.4	102.8	102.6	102.9
September	102.6	102.9	103.8	103.1	103.3	102.5	102.8	102.6	103.0
December	102.6	102.9	103.8	103.1	103.3	102.5	102.8	102.6	103.0
INSURANCE AND FINANCIAL SERVICES									
2010									
December	94.3	95.0	94.4	93.7	93.2	95.9	92.4	93.8	94.3
2011									
March	96.9	97.4	96.6	95.9	95.6	98.1	94.7	96.2	96.7
June	98.6	98.5	97.9	97.7	97.5	99.8	96.3	97.6	98.2
September	98.6	99.4	98.5	98.9	99.2	99.6	98.3	99.4	98.9
December	99.5	99.5	99.6	99.9	99.5	99.4	99.9	100.4	99.6
2012									
March	100.6	100.3	100.6	100.7	100.4	100.1	100.5	100.6	100.5
June	101.3	100.8	101.3	100.6	100.9	100.9	101.3	99.6	101.0
September	102.9	102.5	96.1	100.6	101.6	101.9	102.0	98.8	101.2
December	104.9	103.5	97.4	102.3	103.1	104.0	103.5	101.0	102.7

(a) Unless otherwise specified, reference period of each index: 2011-12 = 100.0.

<i>Group, sub-group and expenditure class</i>	<i>Sydney</i>	<i>Melbourne</i>	<i>Brisbane</i>	<i>Adelaide</i>	<i>Perth</i>	<i>Hobart</i>	<i>Darwin</i>	<i>Canberra</i>	<i>Weighted average of eight capital cities</i>
Food and non-alcoholic beverages	-0.10	0.12	-0.07	-0.01	-0.07	0.00	-0.03	-0.16	-0.03
Bread and cereal products	0.01	0.02	0.03	0.03	0.03	0.00	0.00	0.00	0.02
Bread	-0.01	0.01	0.00	0.00	0.01	0.00	-0.03	-0.01	0.00
Cakes and biscuits	0.03	-0.01	0.02	0.01	0.00	-0.01	0.01	0.01	0.02
Breakfast cereals	0.00	0.01	0.01	0.01	0.01	0.01	0.02	-0.01	0.00
Other cereal products	0.00	0.01	0.00	0.01	0.01	0.00	0.00	0.01	0.00
Meat and seafoods	0.01	0.01	0.02	0.01	0.00	-0.02	-0.03	-0.02	0.01
Beef and veal	0.00	0.00	0.00	0.00	0.00	0.01	-0.01	0.00	0.00
Pork	0.00	0.00	0.01	0.00	0.00	0.01	-0.01	0.00	0.00
Lamb and goat	-0.03	-0.03	-0.02	-0.02	-0.02	-0.03	-0.03	-0.03	-0.03
Poultry	0.02	0.03	0.04	0.03	0.01	0.01	0.02	0.02	0.03
Other meats	0.01	0.00	-0.01	-0.01	0.00	-0.01	0.00	0.01	-0.01
Fish and other seafood	0.00	0.00	0.00	0.00	0.02	0.01	0.00	-0.02	0.01
Dairy and related products	-0.03	0.00	-0.03	0.00	-0.02	0.00	0.01	0.00	-0.02
Milk	-0.01	0.00	0.00	0.00	0.00	0.00	0.01	0.00	0.00
Cheese	-0.01	-0.01	0.00	-0.01	-0.01	-0.01	0.01	-0.01	-0.01
Ice cream and other dairy products	-0.01	0.00	-0.03	0.01	-0.01	0.01	-0.01	0.01	0.00
Fruit and vegetables	-0.12	0.03	-0.10	-0.08	-0.05	-0.01	-0.08	-0.18	-0.07
Fruit	-0.01	0.10	0.00	-0.02	-0.02	-0.02	0.00	-0.05	0.02
Vegetables	-0.11	-0.06	-0.11	-0.07	-0.02	0.01	-0.08	-0.13	-0.08
Food products n.e.c.	0.00	0.01	0.00	0.01	-0.03	0.00	0.01	0.04	0.00
Eggs	0.01	0.00	0.00	-0.01	0.00	0.00	0.00	0.00	0.00
Jams, honey and spreads	0.01	0.00	0.00	0.00	0.00	0.01	0.01	0.00	0.01
Food additives and condiments	-0.01	0.00	0.00	0.00	0.00	-0.01	0.00	-0.01	-0.01
Oils and fats	0.00	0.00	0.00	0.00	0.00	0.00	0.00	0.00	0.00
Snacks and confectionery	0.00	0.01	0.00	-0.01	-0.03	-0.01	0.01	0.03	0.00
Other food products n.e.c.	0.01	-0.01	-0.01	0.01	-0.01	0.01	0.00	0.02	0.00
Non-alcoholic beverages	0.02	0.00	-0.01	0.00	0.00	0.01	0.01	-0.01	0.00
Coffee, tea and cocoa	0.00	0.00	0.00	0.00	0.00	-0.01	0.00	0.00	0.00
Waters, soft drinks and juices	0.01	0.00	-0.01	0.00	0.00	0.03	0.01	-0.01	0.00
Meals out and take away foods	0.02	0.04	0.02	0.02	0.01	0.01	0.05	0.02	0.03
Restaurant meals	0.01	0.02	0.00	0.02	0.01	0.01	0.03	0.00	0.01
Take away and fast foods	0.01	0.03	0.01	0.02	0.00	0.00	0.04	0.02	0.01
Alcohol and tobacco	0.00	0.02	0.05	0.02	0.03	0.04	0.07	-0.01	0.01
Alcoholic beverages	-0.02	0.00	0.01	-0.01	0.00	-0.01	0.04	-0.03	-0.01
Spirits	0.01	-0.01	0.00	-0.01	0.01	-0.01	0.00	0.00	0.00
Wine	0.00	0.01	0.01	0.00	0.01	-0.01	0.00	0.01	0.00
Beer	-0.02	0.00	-0.01	0.00	0.00	0.01	0.04	-0.04	-0.01
Tobacco	0.02	0.01	0.03	0.03	0.03	0.05	0.03	0.02	0.02
Tobacco	0.02	0.01	0.03	0.03	0.03	0.05	0.03	0.02	0.02
Clothing and footwear	-0.02	0.08	0.04	0.10	0.06	0.01	0.03	-0.02	0.03
Garments	-0.06	-0.03	0.02	0.00	0.02	0.02	-0.03	0.00	-0.02
Garments for men	-0.01	0.00	0.02	0.06	0.01	0.04	0.00	0.00	0.01
Garments for women	-0.04	-0.03	-0.01	-0.06	0.00	-0.04	-0.01	0.01	-0.02
Garments for infants and children	-0.01	-0.01	0.01	0.01	0.01	0.02	0.00	-0.01	-0.01
Footwear	-0.01	0.00	0.00	0.02	0.03	0.00	0.05	0.00	0.01
Footwear for men	0.00	0.00	-0.01	0.00	0.01	0.00	0.02	0.00	0.00
Footwear for women	0.00	0.00	0.00	0.01	0.02	0.00	0.03	0.00	0.01
Footwear for infants and children	-0.01	0.00	0.00	0.00	0.00	0.00	0.00	0.00	-0.01
Accessories and clothing services	0.04	0.11	0.01	0.08	0.01	0.00	0.01	-0.02	0.05
Accessories	0.04	0.10	0.02	0.08	0.01	0.00	0.00	-0.01	0.04
Cleaning, repair and hire of clothing and footwear	0.00	0.00	0.00	0.00	0.00	0.01	0.00	0.00	0.00

<i>Group, sub-group and expenditure class</i>	<i>Sydney</i>	<i>Melbourne</i>	<i>Brisbane</i>	<i>Adelaide</i>	<i>Perth</i>	<i>Hobart</i>	<i>Darwin</i>	<i>Canberra</i>	<i>Weighted average of eight capital cities</i>
Housing	0.18	-0.17	0.17	0.10	0.13	0.05	0.10	0.06	0.06
Rents	0.09	0.02	0.04	0.03	0.09	0.02	0.09	0.05	0.05
Rents	0.09	0.02	0.04	0.03	0.09	0.02	0.09	0.05	0.05
New dwelling purchase by owner-occupiers	0.08	-0.16	0.12	0.04	0.05	0.01	0.04	0.01	0.01
New dwelling purchase by owner-occupiers	0.08	-0.16	0.12	0.04	0.05	0.01	0.04	0.01	0.01
Other housing	0.02	0.00	0.03	0.04	0.00	0.02	-0.01	-0.01	0.02
Maintenance and repair of the dwelling	0.01	0.00	0.02	0.03	0.01	0.02	-0.02	-0.01	0.01
Property rates and charges	0.00	0.00	0.00	0.00	0.00	0.00	0.00	0.00	0.00
Utilities	0.00	-0.04	0.00	0.00	-0.02	0.00	-0.01	-0.01	-0.02
Water and sewerage	0.00	0.00	0.00	0.00	0.00	0.00	0.00	0.00	0.00
Electricity	0.00	0.00	0.00	0.00	-0.03	0.00	-0.02	-0.01	0.00
Gas and other household fuels	0.00	-0.03	0.00	0.00	0.00	0.00	0.01	0.00	-0.01
Furnishings, household equipment and services	-0.10	0.00	-0.02	-0.07	-0.14	-0.10	0.06	0.20	-0.05
Furniture and furnishings	-0.04	-0.02	0.02	-0.05	-0.06	-0.05	-0.01	0.11	-0.02
Furniture	-0.05	-0.01	0.01	-0.03	-0.06	-0.05	-0.01	0.11	-0.03
Carpets and other floor coverings	0.00	0.00	0.01	-0.01	0.00	0.01	0.00	0.00	0.00
Household textiles	-0.01	0.00	-0.02	-0.01	-0.01	-0.01	0.01	0.00	-0.01
Household textiles	-0.01	0.00	-0.02	-0.01	-0.01	-0.01	0.01	0.00	-0.01
Household appliances, utensils and tools	-0.04	-0.01	-0.02	-0.02	-0.05	-0.05	0.00	0.02	-0.03
Major household appliances	-0.02	-0.01	-0.01	-0.01	-0.01	-0.02	0.00	0.01	-0.02
Small electric household appliances	-0.01	0.00	0.00	0.00	0.00	-0.02	-0.01	0.00	0.00
Glassware, tableware and household utensils	-0.02	0.00	0.00	0.00	-0.03	-0.02	0.00	0.01	-0.02
Tools and equipment for house and garden	0.00	0.00	-0.01	0.01	-0.01	-0.01	-0.01	0.01	0.00
Non-durable household products	-0.03	0.00	-0.03	-0.02	-0.02	0.00	-0.01	0.00	-0.02
Cleaning and maintenance products	0.00	-0.01	0.00	0.00	0.00	0.01	0.01	0.00	0.00
Personal care products	-0.03	-0.01	-0.03	0.00	0.00	0.00	-0.02	0.02	-0.01
Other non-durable household products	0.00	0.00	-0.01	-0.02	-0.03	0.00	0.00	-0.02	0.00
Domestic and household services	0.01	0.04	0.03	0.01	0.01	0.02	0.06	0.06	0.02
Child care	0.01	0.01	0.01	0.01	0.01	0.00	0.04	0.05	0.01
Hairdressing and personal grooming services	0.00	0.01	0.02	0.00	0.00	0.01	0.01	0.01	0.00
Other household services	0.01	0.01	0.00	0.00	0.00	0.01	0.01	0.01	0.01
Health	-0.05	-0.04	-0.04	-0.03	-0.07	-0.06	-0.02	-0.09	-0.05
Medical products, appliances and equipment	-0.04	-0.03	-0.03	-0.03	-0.06	-0.05	-0.03	-0.04	-0.04
Pharmaceutical products	-0.04	-0.03	-0.04	-0.04	-0.05	-0.05	-0.03	-0.04	-0.04
Therapeutic appliances and equipment	0.00	0.00	0.00	0.00	0.00	0.00	0.00	0.00	0.00
Medical, dental and hospital services	-0.01	-0.01	-0.01	0.01	-0.01	-0.01	0.00	-0.05	-0.01
Medical and hospital services	0.00	-0.01	-0.01	0.01	-0.02	-0.01	0.00	-0.05	-0.01
Dental services	0.00	0.00	0.00	0.00	0.00	0.00	0.00	0.00	0.00
Transport	0.00	0.20	-0.03	0.08	0.14	0.28	-0.10	0.12	0.09
Private motoring	0.00	0.20	-0.03	0.07	0.15	0.28	-0.11	0.13	0.09
Motor vehicles	-0.08	0.00	-0.04	-0.03	0.09	-0.01	-0.20	-0.07	-0.03
Spare parts and accessories for motor vehicles	0.00	0.01	0.00	0.01	0.01	0.02	0.01	0.01	0.01
Automotive fuel	0.07	0.14	0.03	0.08	0.05	0.17	0.09	0.17	0.09
Maintenance and repair of motor vehicles	0.00	0.02	-0.01	-0.02	0.00	0.00	0.00	0.00	0.01
Other services in respect of motor vehicles	0.00	0.02	0.00	0.02	0.00	0.11	0.00	0.00	0.01
Urban transport fares	0.00	0.00	0.00	0.01	0.00	0.00	0.00	0.00	0.00
Urban transport fares	0.00	0.00	0.00	0.01	0.00	0.00	0.00	0.00	0.00

<i>Group, sub-group and expenditure class</i>	<i>Sydney</i>	<i>Melbourne</i>	<i>Brisbane</i>	<i>Adelaide</i>	<i>Perth</i>	<i>Hobart</i>	<i>Darwin</i>	<i>Canberra</i>	<i>Weighted average of eight capital cities</i>
Communication	0.04	0.04	0.04	0.04	0.03	0.04	0.04	0.03	0.04
Communication	0.04	0.04	0.04	0.04	0.03	0.04	0.04	0.03	0.04
Postal services	0.00	0.00	0.00	0.00	0.00	0.00	0.00	0.00	0.00
Telecommunication equipment and services	0.03	0.04	0.04	0.04	0.03	0.04	0.04	0.03	0.04
Recreation and culture	0.05	0.16	0.10	0.04	0.03	0.07	-0.25	0.12	0.08
Audio, visual and computing equipment and services	-0.04	-0.04	-0.06	-0.07	-0.07	-0.07	-0.06	-0.05	-0.05
Audio, visual and computing equipment	-0.04	-0.05	-0.07	-0.08	-0.07	-0.09	-0.06	-0.07	-0.06
Audio, visual and computing media and services	-0.01	0.01	0.00	0.01	0.00	0.03	0.00	0.02	0.01
Newspapers, books and stationery	0.01	-0.01	0.01	0.00	0.02	0.01	-0.01	0.01	0.00
Books	0.00	-0.01	0.00	0.01	0.01	0.01	0.00	0.00	0.00
Newspapers, magazines and stationery	0.01	0.01	0.01	0.00	0.01	0.00	0.00	0.01	0.01
Holiday travel and accommodation	0.10	0.18	0.14	0.10	0.08	0.12	-0.21	0.16	0.13
Domestic holiday travel and accommodation	0.13	0.20	0.14	0.14	0.13	0.21	-0.20	0.18	0.15
International holiday travel and accommodation	-0.02	-0.02	0.00	-0.03	-0.05	-0.09	0.00	-0.02	-0.03
Other recreation, sport and culture	-0.01	0.01	0.01	0.01	0.00	-0.01	0.03	0.01	0.00
Equipment for sports, camping and open-air recreation	-0.01	-0.01	-0.03	-0.01	0.00	0.00	-0.01	0.00	-0.01
Games, toys and hobbies	-0.02	0.01	0.01	0.00	-0.02	-0.01	0.00	-0.02	-0.01
Pets and related products	0.01	0.01	0.00	0.01	0.01	0.00	0.01	-0.01	0.01
Veterinary and other services for pets	0.00	0.01	0.01	0.00	0.00	0.01	0.00	0.00	0.00
Sports participation	0.01	0.00	0.00	0.01	0.00	0.00	0.03	0.01	0.00
Other recreational, sporting and cultural services	0.00	0.01	0.00	0.01	0.01	0.01	0.00	0.03	0.01
Education	0.00	0.00	0.00	0.00	0.00	0.00	0.00	0.01	0.00
Education	0.00	0.00	0.00	0.00	0.00	0.00	0.00	0.01	0.00
Preschool and primary education	0.00	0.00	0.00	0.00	0.00	0.00	0.00	0.00	0.00
Secondary education	0.00	0.00	0.00	0.00	0.00	0.00	0.00	0.00	0.00
Tertiary education	0.00	0.00	0.00	0.00	0.00	0.00	0.00	0.00	0.00
Insurance and financial services	0.11	0.05	0.08	0.07	0.08	0.10	0.07	0.11	0.08
Insurance	0.06	0.03	0.05	0.02	0.03	0.06	0.05	0.08	0.04
Insurance	0.06	0.03	0.05	0.02	0.03	0.06	0.05	0.08	0.04
Financial services	0.05	0.02	0.03	0.05	0.05	0.05	0.01	0.03	0.03
Deposit and loan facilities (direct charges)	0.00	0.00	0.00	0.00	0.01	0.00	0.00	0.01	0.00
Other financial services	0.05	0.01	0.02	0.05	0.04	0.04	0.02	0.03	0.03
All groups CPI	0.1	0.4	0.3	0.4	0.3	0.4	0.0	0.4	0.2

Group, sub-group and expenditure class	INDEX NUMBERS(a)			PERCENTAGE CHANGE		CONTRIBUTION TO TOTAL CPI (ALL GROUPS) (INDEX POINTS)		CHANGE IN POINTS CONTRIBUTION
	Dec Qtr 2011	Sep Qtr 2012	Dec Qtr 2012	Sep Qtr 2012 to Dec Qtr 2012	Dec Qtr 2011 to Dec Qtr 2012	Sep Qtr 2012	Dec Qtr 2012	Sep Qtr 2012 to Dec Qtr 2012
Food and non-alcoholic beverages	100.5	100.9	100.8	-0.1	0.3	16.49	16.46	-0.03
Bread and cereal products	100.6	99.8	101.0	1.2	0.4	1.69	1.71	0.02
Bread	100.1	101.4	101.0	-0.4	0.9	0.58	0.58	0.00
Cakes and biscuits	101.3	99.1	100.8	1.7	-0.5	0.72	0.74	0.02
Breakfast cereals	101.3	97.8	101.4	3.7	0.1	0.18	0.18	0.00
Other cereal products	99.6	99.7	100.9	1.2	1.3	0.21	0.21	0.00
Meat and seafoods	99.9	99.7	100.0	0.3	0.1	2.23	2.24	0.01
Beef and veal	99.2	101.2	100.8	-0.4	1.6	0.39	0.39	0.00
Pork	99.2	99.2	99.9	0.7	0.7	0.35	0.35	0.00
Lamb and goat	99.4	96.9	87.1	-10.1	-12.4	0.24	0.21	-0.03
Poultry	100.7	99.5	105.5	6.0	4.8	0.46	0.49	0.03
Other meats	100.3	100.2	99.8	-0.4	-0.5	0.39	0.38	-0.01
Fish and other seafood	100.4	99.8	101.2	1.4	0.8	0.40	0.41	0.01
Dairy and related products	100.2	100.6	99.1	-1.5	-1.1	1.14	1.12	-0.02
Milk	99.9	99.5	99.1	-0.4	-0.8	0.42	0.42	0.00
Cheese	99.8	101.6	99.2	-2.4	-0.6	0.34	0.33	-0.01
Ice cream and other dairy products	100.7	100.9	98.9	-2.0	-1.8	0.38	0.38	0.00
Fruit and vegetables	104.5	101.4	98.8	-2.6	-5.5	2.52	2.45	-0.07
Fruit	111.7	89.0	90.5	1.7	-19.0	1.08	1.10	0.02
Vegetables	97.6	113.2	106.8	-5.7	9.4	1.43	1.35	-0.08
Food products n.e.c.	99.6	100.9	101.0	0.1	1.4	2.18	2.18	0.00
Eggs	99.1	101.4	103.5	2.1	4.4	0.11	0.11	0.00
Jams, honey and spreads	100.1	99.1	101.6	2.5	1.5	0.14	0.15	0.01
Food additives and condiments	98.7	101.1	98.3	-2.8	-0.4	0.31	0.30	-0.01
Oils and fats	100.6	98.6	99.2	0.6	-1.4	0.17	0.17	0.00
Snacks and confectionery	99.1	101.8	102.0	0.2	2.9	0.97	0.97	0.00
Other food products n.e.c.	101.0	100.4	100.5	0.1	-0.5	0.47	0.47	0.00
Non-alcoholic beverages	99.0	101.6	102.0	0.4	3.0	1.17	1.17	0.00
Coffee, tea and cocoa	100.2	103.6	104.4	0.8	4.2	0.30	0.30	0.00
Waters, soft drinks and juices	98.6	100.9	101.2	0.3	2.6	0.87	0.87	0.00
Meals out and take away foods	99.7	101.6	102.0	0.4	2.3	5.56	5.59	0.03
Restaurant meals	99.9	101.0	101.4	0.4	1.5	2.86	2.87	0.01
Take away and fast foods	99.6	102.1	102.6	0.5	3.0	2.71	2.72	0.01
Alcohol and tobacco	99.3	102.6	102.8	0.2	3.5	7.35	7.36	0.01
Alcoholic beverages	99.5	102.0	101.9	-0.1	2.4	4.87	4.86	-0.01
Spirits	99.6	102.4	102.3	-0.1	2.7	0.93	0.93	0.00
Wine	99.6	101.1	101.4	0.3	1.8	1.65	1.65	0.00
Beer	99.3	102.6	102.1	-0.5	2.8	2.29	2.28	-0.01
Tobacco	98.8	103.6	104.5	0.9	5.8	2.48	2.50	0.02
Tobacco	98.8	103.6	104.5	0.9	5.8	2.48	2.50	0.02
Clothing and footwear	100.4	100.2	101.0	0.8	0.6	3.98	4.01	0.03
Garments	101.3	100.8	100.0	-0.8	-1.3	2.51	2.49	-0.02
Garments for men	102.0	101.9	103.0	1.1	1.0	0.75	0.76	0.01
Garments for women	101.0	100.1	98.3	-1.8	-2.7	1.45	1.43	-0.02
Garments for infants and children	101.3	101.2	100.7	-0.5	-0.6	0.31	0.30	-0.01
Footwear	99.6	100.5	101.3	0.8	1.7	0.62	0.63	0.01
Footwear for men	101.4	100.7	99.9	-0.8	-1.5	0.14	0.14	0.00
Footwear for women	98.5	100.2	102.3	2.1	3.9	0.36	0.37	0.01
Footwear for infants and children	100.7	101.1	99.8	-1.3	-0.9	0.13	0.12	-0.01
Accessories and clothing services	98.3	98.3	104.0	5.8	5.8	0.85	0.90	0.05
Accessories	98.0	97.7	104.2	6.7	6.3	0.73	0.77	0.04
Cleaning, repair and hire of clothing and footwear	99.9	101.9	102.8	0.9	2.9	0.12	0.12	0.00

(a) Unless otherwise specified, reference period of each index: 2011-12 = 100.0.

continued

Group, sub-group and expenditure class	INDEX NUMBERS(a)			PERCENTAGE CHANGE		CONTRIBUTION TO TOTAL CPI (ALL GROUPS INDEX POINTS)		CHANGE IN POINTS CONTRIBUTION
	Dec Qtr 2011	Sep Qtr 2012	Dec Qtr 2012	Sep Qtr 2012 to Dec Qtr 2012	Dec Qtr 2011 to Dec Qtr 2012	Sep Qtr 2012	Dec Qtr 2012	Sep Qtr 2012 to Dec Qtr 2012
Housing	99.7	103.9	104.1	0.2	4.4	23.58	23.64	0.06
Rents	99.5	102.4	103.2	0.8	3.7	7.01	7.06	0.05
Rents	99.5	102.4	103.2	0.8	3.7	7.01	7.06	0.05
New dwelling purchase by owner-occupiers	100.1	101.0	101.1	0.1	1.0	8.70	8.71	0.01
New dwelling purchase by owner-occupiers	100.1	101.0	101.1	0.1	1.0	8.70	8.71	0.01
Other housing	100.0	103.0	103.3	0.3	3.3	3.46	3.48	0.02
Maintenance and repair of the dwelling	100.0	101.2	101.7	0.5	1.7	2.07	2.08	0.01
Property rates and charges	100.0	105.8	105.8	0.0	5.8	1.40	1.40	0.00
Utilities	99.1	113.4	113.1	-0.3	14.1	4.41	4.39	-0.02
Water and sewerage	99.7	103.5	103.5	0.0	3.8	1.01	1.01	0.00
Electricity	98.9	116.5	116.4	-0.1	17.7	2.52	2.52	0.00
Gas and other household fuels	98.7	117.1	115.8	-1.1	17.3	0.88	0.87	-0.01
Furnishings, household equipment and services	100.2	101.6	101.0	-0.6	0.8	9.19	9.14	-0.05
Furniture and furnishings	102.0	101.9	100.5	-1.4	-1.5	1.90	1.88	-0.02
Furniture	102.3	102.3	100.7	-1.6	-1.6	1.63	1.60	-0.03
Carpets and other floor coverings	100.2	99.4	99.7	0.3	-0.5	0.28	0.28	0.00
Household textiles	102.4	100.3	99.1	-1.2	-3.2	0.61	0.60	-0.01
Household textiles	102.4	100.3	99.1	-1.2	-3.2	0.61	0.60	-0.01
Household appliances, utensils and tools	99.6	99.6	97.4	-2.2	-2.2	1.39	1.36	-0.03
Major household appliances	99.3	99.1	96.3	-2.8	-3.0	0.48	0.46	-0.02
Small electric household appliances	99.0	99.0	97.2	-1.8	-1.8	0.23	0.23	0.00
Glassware, tableware and household utensils	100.2	100.0	97.2	-2.8	-3.0	0.43	0.41	-0.02
Tools and equipment for house and garden	100.0	100.2	99.9	-0.3	-0.1	0.26	0.26	0.00
Non-durable household products	99.6	101.0	100.4	-0.6	0.8	2.86	2.84	-0.02
Cleaning and maintenance products	100.6	101.7	101.8	0.1	1.2	0.30	0.30	0.00
Personal care products	99.3	101.7	100.5	-1.2	1.2	1.11	1.10	-0.01
Other non-durable household products	99.6	100.2	100.1	-0.1	0.5	1.45	1.45	0.00
Domestic and household services	99.2	103.8	104.8	1.0	5.6	2.44	2.46	0.02
Child care	98.4	105.5	106.9	1.3	8.6	0.77	0.78	0.01
Hairdressing and personal grooming services	99.8	102.2	102.7	0.5	2.9	0.93	0.93	0.00
Other household services	99.3	104.1	105.4	1.2	6.1	0.74	0.75	0.01
Health	97.1	105.5	104.6	-0.9	7.7	5.57	5.52	-0.05
Medical products, appliances and equipment	93.5	100.9	97.9	-3.0	4.7	1.29	1.25	-0.04
Pharmaceutical products	92.6	101.1	97.6	-3.5	5.4	1.14	1.10	-0.04
Therapeutic appliances and equipment	100.1	99.7	99.7	0.0	-0.4	0.15	0.15	0.00
Medical, dental and hospital services	98.3	107.0	106.7	-0.3	8.5	4.28	4.27	-0.01
Medical and hospital services	98.2	107.7	107.4	-0.3	9.4	3.70	3.69	-0.01
Dental services	99.2	102.4	102.6	0.2	3.4	0.58	0.58	0.00
Transport	99.2	100.5	101.2	0.7	2.0	11.62	11.71	0.09
Private motoring	99.3	100.3	101.0	0.7	1.7	10.84	10.93	0.09
Motor vehicles	99.6	99.3	98.4	-0.9	-1.2	3.14	3.11	-0.03
Spare parts and accessories for motor vehicles	100.2	100.5	101.0	0.5	0.8	0.99	1.00	0.01
Automotive fuel	98.8	97.9	100.4	2.6	1.6	3.47	3.56	0.09
Maintenance and repair of motor vehicles	99.7	103.1	103.4	0.3	3.7	1.78	1.79	0.01
Other services in respect of motor vehicles	99.0	104.9	105.7	0.8	6.8	1.46	1.47	0.01
Urban transport fares	97.8	103.4	103.4	0.0	5.7	0.78	0.78	0.00
Urban transport fares	97.8	103.4	103.4	0.0	5.7	0.78	0.78	0.00

(a) Unless otherwise specified, reference period of each index: 2011-12 = 100.0.

continued

Group, sub-group and expenditure class	INDEX NUMBERS(a)			PERCENTAGE CHANGE		CONTRIBUTION TO TOTAL CPI (ALL GROUPS INDEX POINTS)		CHANGE IN POINTS CONTRIBUTION
	Dec Qtr 2011	Sep Qtr 2012	Dec Qtr 2012	Sep Qtr 2012 to Dec Qtr 2012	Dec Qtr 2011 to Dec Qtr 2012	Sep Qtr 2012	Dec Qtr 2012	Sep Qtr 2012 to Dec Qtr 2012
Communication	100.3	100.6	101.9	1.3	1.6	3.07	3.11	0.04
Communication	100.3	100.6	101.9	1.3	1.6	3.07	3.11	0.04
Postal services	99.5	101.4	102.0	0.6	2.5	0.13	0.13	0.00
Telecommunication equipment and services	100.3	100.6	101.9	1.3	1.6	2.94	2.98	0.04
Recreation and culture	101.5	99.2	99.8	0.6	-1.7	12.39	12.47	0.08
Audio, visual and computing equipment and services	102.0	94.6	92.5	-2.2	-9.3	2.24	2.19	-0.05
Audio, visual and computing equipment	102.7	92.1	88.1	-4.3	-14.2	1.29	1.23	-0.06
Audio, visual and computing media and services	101.1	98.3	98.7	0.4	-2.4	0.95	0.96	0.01
Newspapers, books and stationery	100.0	100.9	101.4	0.5	1.4	1.08	1.08	0.00
Books	99.9	98.3	98.5	0.2	-1.4	0.38	0.38	0.00
Newspapers, magazines and stationery	100.1	102.4	103.1	0.7	3.0	0.69	0.70	0.01
Holiday travel and accommodation	103.0	99.6	102.2	2.6	-0.8	4.85	4.98	0.13
Domestic holiday travel and accommodation	103.8	96.4	102.4	6.2	-1.3	2.48	2.63	0.15
International holiday travel and accommodation	102.0	103.2	102.0	-1.2	0.0	2.37	2.34	-0.03
Other recreation, sport and culture	99.8	100.8	100.8	0.0	1.0	4.22	4.22	0.00
Equipment for sports, camping and open-air recreation	100.3	99.9	98.0	-1.9	-2.3	0.59	0.58	-0.01
Games, toys and hobbies	100.2	96.3	95.5	-0.8	-4.7	0.72	0.71	-0.01
Pets and related products	101.0	100.0	101.6	1.6	0.6	0.38	0.39	0.01
Veterinary and other services for pets	99.6	101.7	102.5	0.8	2.9	0.42	0.42	0.00
Sports participation	99.7	103.0	103.6	0.6	3.9	0.99	0.99	0.00
Other recreational, sporting and cultural services	99.0	102.2	102.6	0.4	3.6	1.12	1.13	0.01
Education	97.1	103.0	103.0	0.0	6.1	3.35	3.35	0.00
Education	97.1	103.0	103.0	0.0	6.1	3.35	3.35	0.00
Preschool and primary education	97.5	103.0	103.1	0.1	5.7	0.55	0.55	0.00
Secondary education	96.3	103.7	103.7	0.0	7.7	1.34	1.34	0.00
Tertiary education	97.7	102.3	102.3	0.0	4.7	1.46	1.46	0.00
Insurance and financial services	99.6	101.2	102.7	1.5	3.1	5.20	5.28	0.08
Insurance	99.3	104.7	107.7	2.9	8.5	1.53	1.57	0.04
Insurance	99.3	104.7	107.7	2.9	8.5	1.53	1.57	0.04
Financial services	99.6	99.8	100.8	1.0	1.2	3.67	3.70	0.03
Deposit and loan facilities (direct charges)	99.8	99.9	100.2	0.3	0.4	0.75	0.75	0.00
Other financial services	99.6	99.8	100.9	1.1	1.3	2.92	2.95	0.03
All groups CPI	99.8	101.8	102.0	0.2	2.2	101.8	102.0	0.2

(a) Unless otherwise specified, reference period of each index: 2011-12 = 100.0.

ANALYTICAL SERIES, Weighted average of eight capital cities(a)

	INDEX NUMBERS(b)			PERCENTAGE CHANGE		CONTRIBUTION TO TOTAL CPI (ALL GROUPS CPI INDEX POINTS)		CHANGE IN POINTS CONTRIBUTION
	Dec Qtr 2011	Sep Qtr 2012	Dec Qtr 2012	Sep Qtr 2012 to Dec Qtr 2012	Dec Qtr 2011 to Dec Qtr 2012	Sep Qtr 2012	Dec Qtr 2012	Sep Qtr 2012 to Dec Qtr 2012
All groups CPI	99.8	101.8	102.0	0.2	2.2	101.8	102.0	0.2
All groups CPI, seasonally adjusted	100.0	101.7	102.2	0.5	2.2
Underlying trend series								
Trimmed mean	99.8	101.5	102.1	0.6	2.3
Weighted median	r99.8	r101.6	102.1	0.5	2.3
International trade exposure series								
Tradables	100.2	100.2	99.8	-0.4	-0.4	39.02	38.85	-0.17
Non-tradables	99.6	102.8	103.5	0.7	3.9	62.76	63.20	0.44
Goods and services series								
Goods component	100.0	101.3	101.1	-0.2	1.1	58.45	58.35	-0.10
Services component	99.7	102.4	103.3	0.9	3.6	43.34	43.70	0.36
All groups CPI including								
Deposit and loan facilities (indirect charges)	99.9	101.6	101.9	0.3	2.0
Market goods and services excluding 'volatile items'								
Goods	100.1	100.6	100.4	-0.2	0.3	46.91	46.84	-0.07
Services	100.2	101.4	102.6	1.2	2.4	31.02	31.37	0.35
Total	100.1	100.9	101.3	0.4	1.2	77.93	78.21	0.28
All groups CPI excluding								
Food and non-alcoholic beverages	99.7	101.9	102.3	0.4	2.6	85.29	85.59	0.30
Alcohol and tobacco	99.9	101.7	102.0	0.3	2.1	94.43	94.69	0.26
Clothing and footwear	99.8	101.8	102.1	0.3	2.3	97.80	98.04	0.24
Housing	99.9	101.2	101.4	0.2	1.5	78.20	78.41	0.21
Furnishings, household equipment and services	99.8	101.8	102.2	0.4	2.4	92.59	92.91	0.32
Health	100.0	101.6	101.9	0.3	1.9	96.21	96.52	0.31
Transport	99.9	102.0	102.2	0.2	2.3	90.16	90.34	0.18
Communication	99.8	101.8	102.1	0.3	2.3	98.71	98.94	0.23
Recreation and culture	99.6	102.2	102.4	0.2	2.8	89.39	89.58	0.19
Education	99.9	101.7	102.0	0.3	2.1	98.43	98.69	0.26
Insurance and financial services	99.9	101.8	102.0	0.2	2.1	96.58	96.77	0.19
Housing, Insurance and financial services	99.9	101.2	101.4	0.2	1.5	73.00	73.13	0.13
Medical and hospital services	99.9	101.6	101.9	0.3	2.0	98.08	98.36	0.28
Food and energy	99.8	101.6	101.8	0.2	2.0	81.28	81.51	0.23
'Volatile items'	99.8	101.9	102.2	0.3	2.4	95.79	96.04	0.25

.. not applicable

r revised

(a) Refer to paragraphs 11 and 12 of the Explanatory Notes for a description of these series.

(b) Unless otherwise specified, reference period of each index: 2011-12 = 100.0.

INTERNATIONAL COMPARISONS, All groups CPI excluding Housing and Insurance and financial services—Index numbers(a)

<i>Period</i>	<i>Australia</i>	<i>New Zealand</i>	<i>Hong Kong</i>	<i>Indonesia</i>	<i>Japan</i>	<i>Korea, Republic of</i>	<i>Singapore</i>	<i>Taiwan</i>	<i>Canada</i>	<i>United States of America</i>	<i>Germany</i>	<i>United Kingdom</i>
2008-09	94.1	92.6	91.4	86.4	101.8	91.2	91.4	97.3	93.7	92.9	96.0	86.5
2009-10	95.9	94.3	92.7	89.6	99.9	93.5	92.5	97.3	94.9	94.2	96.7	90.0
2010-11	98.3	98.1	96.3	95.7	99.9	97.1	96.2	98.4	97.4	96.8	98.1	95.0
2011-12	100.0	100.0	100.0	100.0	100.0	100.0	100.0	100.0	100.0	100.0	100.0	100.0
2008												
December	93.4	92.1	91.3	86.5	102.3	90.5	92.5	98.9	93.0	92.0	95.8	86.2
2009												
March	94.1	92.4	90.8	86.6	100.8	91.3	91.1	95.4	92.6	91.1	95.6	85.9
June	94.7	92.9	90.6	86.5	100.8	92.3	90.1	96.0	94.2	92.3	96.0	87.3
September	95.1	94.2	91.0	88.4	100.5	92.7	91.1	97.4	94.4	93.3	96.4	88.1
December	95.5	94.1	92.3	88.8	99.9	92.8	92.1	97.5	94.5	93.8	96.6	89.2
2010												
March	96.1	94.4	93.5	89.8	99.5	93.7	92.7	96.9	95.0	94.4	96.7	90.4
June	96.7	94.5	93.9	91.3	99.8	94.6	93.9	97.2	95.5	95.1	97.1	92.3
September	97.0	95.6	94.2	94.0	99.6	95.5	94.8	97.6	95.9	95.1	97.4	92.5
December	97.5	97.9	95.3	95.7	100.1	96.3	95.5	98.7	96.6	95.5	97.7	93.8
2011												
March	98.9	98.9	97.2	96.3	99.6	98.0	97.0	98.3	97.6	97.1	98.4	95.9
June	99.9	99.8	98.4	96.6	100.2	98.6	97.5	99.1	99.3	99.4	99.0	97.9
September	100.1	100.1	98.4	98.7	99.9	100.0	98.7	99.1	99.4	99.7	99.5	98.5
December	99.9	99.6	99.5	99.5	99.7	99.6	99.5	100.3	99.5	99.3	99.6	99.7
2012												
March	99.7	100.1	100.6	100.4	100.0	100.2	100.4	99.7	100.1	100.2	100.2	100.3
June	100.3	100.2	101.4	101.3	100.2	100.2	101.3	100.9	101.0	100.9	100.8	101.4
September	101.2	100.3	101.6	103.3	99.5	100.4	102.0	102.4	100.6	102.2	101.2	101.6
December	101.4	nya	nya	104.1	nya	100.7	nya	102.2	nya	nya	101.6	103.1

nya not yet available

(a) Unless otherwise specified, reference period of each index: 2011-12 = 100.0

<i>Period</i>	<i>Australia</i>	<i>New Zealand</i>	<i>Hong Kong</i>	<i>Indonesia</i>	<i>Japan</i>	<i>Korea, Republic of</i>	<i>Singapore</i>	<i>Taiwan</i>	<i>Canada</i>	<i>United States of America</i>	<i>Germany</i>	<i>United Kingdom</i>
PERCENTAGE CHANGE (from previous year)												
2008–09	2.5	3.2	1.1	9.0	0.6	4.3	2.0	1.6	1.3	1.2	1.1	3.8
2009–10	1.9	1.8	1.4	3.7	-1.9	2.5	1.2	0.0	1.3	1.4	0.7	4.0
2010–11	2.5	4.0	3.9	6.8	0.0	3.9	4.0	1.1	2.6	2.8	1.4	5.6
2011–12	1.7	1.9	3.8	4.5	0.1	3.0	4.0	1.6	2.7	3.3	1.9	5.3

PERCENTAGE CHANGE (from corresponding quarter of previous year)

2008												
December	2.4	3.0	2.1	11.5	1.2	4.6	4.0	0.1	1.3	1.3	1.2	4.2
2009												
March	2.1	2.8	-0.5	7.7	-0.2	4.2	0.8	-3.5	0.7	-0.8	0.3	3.0
June	1.4	1.6	-1.9	3.5	-1.2	3.1	-1.5	0.6	0.2	-2.4	0.2	2.2
September	1.2	1.4	-1.9	2.8	-2.6	2.2	-0.9	1.5	-0.5	-2.8	-0.1	1.8
December	2.2	2.2	1.1	2.7	-2.3	2.5	-0.4	0.1	1.6	2.0	0.8	3.5
2010												
March	2.1	2.2	3.0	3.7	-1.3	2.6	1.8	-0.6	2.6	3.6	1.2	5.2
June	2.1	1.7	3.6	5.5	-1.0	2.5	4.2	0.3	1.4	3.0	1.1	5.7
September	2.0	1.5	3.5	6.3	-0.9	3.0	4.1	0.4	1.6	1.9	1.0	5.0
December	2.1	4.0	3.3	7.8	0.2	3.8	3.7	1.1	2.2	1.8	1.1	5.2
2011												
March	2.9	4.8	4.0	7.2	0.1	4.6	4.6	-0.4	2.7	2.9	1.8	6.1
June	3.3	5.6	4.8	5.8	0.4	4.2	3.8	0.8	4.0	4.5	2.0	6.1
September	3.2	4.7	4.5	5.0	0.3	4.7	4.1	0.0	3.6	4.8	2.2	6.5
December	2.5	1.7	4.4	4.0	-0.4	3.4	4.2	1.2	3.0	4.0	1.9	6.3
2012												
March	0.8	1.2	3.5	4.3	0.4	2.2	3.5	-0.6	2.6	3.2	1.8	4.6
June	0.4	0.4	3.0	4.9	0.0	1.6	3.9	1.2	1.7	1.5	1.8	3.6
September	1.1	0.2	3.3	4.7	-0.4	0.4	3.3	3.3	1.2	2.5	1.7	3.1
December	1.5	nya	nya	4.6	nya	1.1	nya	1.9	nya	nya	2.0	3.4

PERCENTAGE CHANGE (from previous quarter)

2008												
December	-0.6	-0.9	-1.6	0.6	-0.9	-0.2	0.7	2.0	-2.0	-4.2	-0.7	-0.3
2009												
March	0.7	0.3	-0.5	0.1	-1.5	0.9	-1.5	-0.1	-0.4	-1.0	-0.2	-0.3
June	0.6	0.5	-0.2	-0.1	0.0	1.1	-1.1	-1.0	1.7	1.3	0.4	1.6
September	0.4	1.4	0.4	2.2	-0.3	0.4	1.1	-1.4	0.2	1.1	0.4	0.9
December	0.4	-0.1	1.4	0.5	-0.6	0.1	1.1	-1.4	0.1	0.5	0.2	1.2
2010												
March	0.6	0.3	1.3	1.1	-0.4	1.0	0.7	1.6	0.5	0.6	0.1	1.3
June	0.6	0.1	0.4	1.7	0.3	1.0	1.3	1.3	0.5	0.7	0.4	2.1
September	0.3	1.2	0.3	3.0	-0.2	1.0	1.0	0.2	0.4	0.0	0.3	0.2
December	0.5	2.4	1.2	1.8	0.5	0.8	0.7	1.2	0.7	0.4	0.3	1.4
2011												
March	1.4	1.0	2.0	0.6	-0.5	1.8	1.6	1.4	1.0	1.7	0.7	2.2
June	1.0	0.9	1.2	0.3	0.6	0.6	0.5	2.0	1.7	2.4	0.6	2.1
September	0.2	0.3	0.0	2.2	-0.3	1.4	1.2	1.5	0.1	0.3	0.5	0.6
December	-0.2	-0.5	1.1	0.8	-0.2	-0.4	0.8	1.6	0.1	-0.4	0.1	1.2
2012												
March	-0.2	0.5	1.1	0.9	0.3	0.6	0.9	1.4	0.6	0.9	0.6	0.6
June	0.6	0.1	0.8	0.9	0.2	0.0	0.9	1.8	0.9	0.7	0.6	1.1
September	0.9	0.1	0.2	2.0	-0.7	0.2	0.7	1.5	-0.4	1.3	0.4	0.2
December	0.2	nya	nya	0.8	nya	0.3	nya	-0.2	nya	nya	0.4	1.5

nya not yet available

EXPLANATORY NOTES

BRIEF DESCRIPTION OF THE CPI

1 The Consumer Price Index (CPI) measures quarterly changes in the price of a 'basket' of goods and services which account for a high proportion of expenditure by the CPI population group (i.e. metropolitan households). This 'basket' covers a wide range of goods and services, arranged in the following eleven groups:

- Food and non-alcoholic beverages
- Alcohol and tobacco
- Clothing and footwear
- Housing
- Furnishings, household equipment and services
- Health
- Transport
- Communication
- Recreation and culture
- Education
- Insurance and financial services.

2 Capital city indexes used by the CPI are based on the 2006 Australian Standard Geographical Classification (ASGC) statistical divisions. The capital city indexes measure price movements over time in each city individually. They do not measure differences in retail price levels between cities.

3 Further information about the CPI is contained in *Consumer Price Index: Concepts, Sources and Methods, 2011* (cat. no. 6461.0). An updated version reflecting the changes made during the 16th series review was released on 19 December 2011.

PRICES

4 The frequency of price collection by item varies as necessary to obtain reliable price measures. Prices of some items are volatile (i.e. their prices may vary many times each quarter) and for these items frequent price observations are necessary to obtain a reliable measure of the average price for the quarter. Each month prices are collected at regular intervals for goods such as milk, bread, fresh meat and seafood, fresh fruit and vegetables, alcohol, tobacco, women's outerwear, project homes, motor vehicles, petrol and holiday travel and accommodation. For most other items, price volatility is not a problem and prices are collected once a quarter. There are a few items where prices are changed at infrequent intervals, for example education fees where prices are set once a year. In these cases, the frequency of price collection is modified accordingly.

5 In order to facilitate a more even spread of field collection workload, the number of items for which prices are collected quarterly is distributed roughly equally across each month of each quarter. In all cases, however, individual items are priced in the same month of each quarter. For example, items for which prices are collected in the first month of the September quarter, July, are also priced in the first month of subsequent quarters, namely October, January and April.

WEIGHTING PATTERN

6 There are 87 expenditure classes (that is, groupings of like items) in the 16th series CPI and each expenditure class has its own weight, or measure of relative importance. In calculating the index, price changes for the various expenditure classes are combined using these weights.

7 Changes in the weighting pattern have been made at approximately six yearly intervals to take account of changes in household spending patterns. The CPI now comprises sixteen series of price indexes which have been linked to form a continuous series. The current and historical weighting patterns for the CPI for the weighted average of the eight capital cities are published in *Consumer Price Index: Historical Weighting Patterns (1948 to 2011)* (cat. no. 6431.0). The 16th series weighting pattern for the weighted average of eight capital cities and for each of the eight capital cities, as well as each city's percentage contribution to the weighted average, are also published in the

EXPLANATORY NOTES *continued*

WEIGHTING PATTERN *continued*

Consumer Price Index: 16th Series Weighting Pattern (cat. no. 6471.0). Both publications are available on the ABS website <<http://www.abs.gov.au>>.

ANALYSIS OF CPI CHANGES

8 Movements in indexes from one period to another can be expressed either as changes in index points or as percentage changes. The following example illustrates the method of calculating changes in index points and percentage changes between any two periods:

All groups CPI: Weighted average of eight capital cities. Index numbers:

June Quarter 2012	100.4 (see Table 1)
less June Quarter 2011	99.2 (see Table 1)
Change in index points	1.2
Percentage change	$1.2/99.2 \times 100 = 1.2\%$ (see Table 2)

9 Percentage changes are calculated to illustrate three different kinds of movements in index numbers:

- movements between consecutive financial years (where the index numbers for financial years are simple averages of the quarterly index numbers)
- movements between corresponding quarters of consecutive years
- movements between consecutive quarters.

10 Table 7 provides a detailed analysis, for the weighted average of eight capital cities, of movements in the CPI since the previous quarter, including information on movements for groups, sub-groups and expenditure classes. It also shows the contribution which each makes to the total CPI. For instance, the dairy and related products sub-group contributed 1.13 index points to the total All groups index number of 100.4 for the June Quarter 2012. The final column shows contributions to the change in All Groups index points by each group, sub-group and expenditure class.

ANALYTICAL SERIES

11 Various series are presented in Table 8 in this publication to assist users analyse the CPI. Some of the analytical series are compiled by taking subsets of the CPI basket, and most are self explanatory, such as 'All groups CPI excluding Food and non-alcoholic beverages'. (A complete list of CPI groups, sub-groups and expenditure classes is contained in Tables 6 and 7). Other series and their composition are described below:

- *All groups CPI, seasonally adjusted*: Comprises all components included in the All groups CPI, seasonally adjusted where seasonality has been identified at the weighted average of eight capital cities level. Seasonal adjustment factors are calculated using the history of price changes up to the current quarter CPI and are revised each quarter.
- *Underlying trend series, 'Trimmed mean' and 'Weighted median'*: These are two analytical measures of trend inflation calculated from the June quarter 2002 using standard ABS seasonal adjustment techniques. For more information see the *Information Paper: Seasonal Adjustment of Consumer Price Indexes, 2011* (cat. no. 6401.0.55.003). The Trimmed mean and Weighted median are calculated using the distribution of expenditure classes each quarter derived as follows:
 - Where CPI expenditure classes are identified as having a seasonal pattern, quarterly price changes are estimated on a seasonally adjusted basis. In the 16th series, 62 out of the 87 expenditure classes are classified as seasonal. A description of which series are seasonal is published in Appendix 1 of the September quarter 2011 issue of *Consumer Price Index, Australia* (cat. no 6401.0).
 - The CPI expenditure classes are ranked from lowest to highest according to the seasonally adjusted percentage change from the previous quarter.
 - The seasonally adjusted relative weight of each expenditure class is calculated based on its previous quarter contribution to the All groups CPI.

EXPLANATORY NOTES *continued*

ANALYTICAL SERIES *continued*

- The 'Trimmed mean' is calculated by using a weighted average of percentage change from the previous quarter (seasonally adjusted) from the middle 70 per cent of the distribution.
- The 'Weighted median' is calculated using the percentage change from the previous quarter (seasonally adjusted) expenditure class at the 50th percentile of the distribution.
- *International trade exposure series, Tradables component*: Comprises all items whose prices are largely determined on the world market. For more information, see paragraph 12 below.
- *International trade exposure series, Non-tradables component*: Comprises all items not included in the Tradables component.
- *All groups CPI, goods component*: Comprises the Food and non-alcoholic beverages group (except Restaurant meals); Alcohol and tobacco group; Clothing and footwear group (except Cleaning, repair and hire of clothing and footwear); Furnishings, household equipment and services group (except Domestic and household services sub-group); Utilities, Audio, visual and computing equipment and services, and Newspapers, books and stationery sub-groups; and New dwelling purchase by owner-occupiers, Pharmaceutical products, Motor vehicles, Automotive fuel, Spare parts and accessories for motor vehicles, Equipment for sports, camping and open-air recreation, Games, toys and hobbies and Pets and related products expenditure classes.
- *All groups CPI, services component*: Comprises all items not included in the 'All groups CPI, goods component'. A description of which series are goods or services is published in Appendix 1 of the September quarter 2011 issue of *Consumer Price Index, Australia* (cat. no 6401.0).
- *All groups CPI including Deposit and loan facilities (indirect charges)*: One of the outcomes of the 16th series CPI Review was to remove the indirectly measured component of the Deposit and loan facilities index from the headline CPI but to include it in a new analytical series. This index includes the 16th series All groups CPI plus the indirectly measured component of the Deposit and loan facilities index.
- *Market goods and services excluding 'volatile items'*: in addition to the items excluded from the series 'All groups CPI excluding 'volatile items'', also excludes: Utilities, Property rates and charges, Child care, Health, Other services in respect of motor vehicles, Urban transport fares, Postal services, and Education.
- *All groups CPI excluding Insurance and financial services*: Reflecting the changing composition of the CPI, from the September quarter 1989 to the June quarter 1998, comprises the All groups CPI excluding house insurance, house contents insurance, vehicle insurance and mortgage interest charges and consumer credit charges; from the September quarter 1998 to the June quarter 2000 comprises the All groups CPI excluding house insurance, house contents insurance and vehicle insurance; from the September quarter 2000 to the June quarter 2005 comprises the All groups CPI excluding insurance services; from the September quarter 2005 to the June quarter 2011 comprises the All groups CPI excluding Financial and insurance services; from the September quarter 2011 comprises the All groups CPI excluding Insurance and financial services.

EXPLANATORY NOTES *continued*

ANALYTICAL SERIES *continued*

- *All groups CPI excluding Housing and Insurance and financial services*: Reflecting the changing composition of the CPI, from the September quarter 1989 to the June quarter 1998, comprises the All groups CPI excluding Housing, house contents insurance, vehicle insurance and consumer credit charges; from the September quarter 1998 to the June quarter 2000 comprises the All groups CPI excluding Housing, house insurance, house contents insurance and vehicle insurance; from the September quarter 2000 to the June quarter 2005 comprises the All groups CPI excluding Housing and insurance services; from the September quarter 2005 to the June quarter 2011 comprises the All groups CPI excluding Housing and Financial and insurance services; from the September quarter 2011 comprises the All groups CPI excluding Housing and Insurance and financial services.
- *All groups CPI excluding food and energy*: Comprises the All groups CPI excluding the Food and non-alcoholic beverages group (except Restaurant meals); Electricity, Gas and other household fuels; and Automotive fuel.
- *All groups CPI excluding 'volatile items'*: Comprises the All groups CPI excluding Fruit and vegetables and Automotive fuel.

12 The International trade exposure series was reviewed and updated for the 16th series. There were five changes of classification. 'Cakes and biscuits' and 'Jams, honey and spreads' were reclassified from non-tradable to tradable. 'Waters, soft drinks and juices', 'Newspapers, magazines and stationery' and 'Pets and related products' were reclassified from tradable to non-tradable. A description of which series are tradable or non-tradable is published in Appendix 1 of the September quarter 2011 issue of *Consumer Price Index, Australia* (cat. no 6401.0). These changes are included from the September quarter 2011. The historical tradable and non-tradable series will not be revised.

ROUNDING

13 The published index numbers have been rounded to one decimal place, and the percentage changes (also rounded to one decimal place) are calculated from the rounded index numbers. In some cases, this can result in the percentage change for the total level of a group of indexes being outside the range of the percentage changes for the component level indexes. Seasonally adjusted estimates are calculated from rounded index numbers. The underlying trend estimates, Trimmed mean and Weighted median, are calculated from unrounded component series. The percentage changes for the seasonal and underlying series (rounded to one decimal place) are calculated from the rounded index numbers.

SEASONALLY ADJUSTED INDEXES

14 Seasonally adjusted estimates are derived by estimating and removing systematic calendar related effects from the original series. In most economic data these calendar related effects are a combination of the classical seasonal influences (e.g. the effect of the weather, social traditions or administrative practices such as government charges increasing on 1 July each year) plus other kinds of calendar related variations, such as Easter or the proximity of significant days in the year (e.g. Christmas). In the seasonal adjustment process, both seasonal and other calendar related factors evolve over time to reflect changes in activity patterns. The seasonally adjusted estimates reflect the sampling and non-sampling errors to which the original estimates are subject.

15 The CPI uses a concurrent seasonal adjustment methodology to derive the adjustment factors. This method uses the original time series available at each reference period to estimate seasonal factors for the current and previous quarters. Concurrent seasonal adjustment is technically superior to the more traditional method of reanalysing seasonal patterns once each year because it uses all available data to fine tune the estimates of the seasonal component each quarter. With concurrent analysis, the seasonally adjusted series are subject to revision each quarter as the estimates of the seasonal factors are improved. In most instances, the only significant revisions will be to the combined adjustment factors for the previous quarter and for the same quarter in

EXPLANATORY NOTES *continued*

SEASONALLY ADJUSTED INDEXES *continued*

the preceding year as the reference quarter (i.e. if the latest quarter is September quarter 2011 then the most significant revisions will be to June quarter 2011 and September quarter 2010). The seasonal patterns are also reanalysed on an annual basis or when there are known changes to regular events. This can lead to additional revisions.

16 Autoregressive integrated moving average (ARIMA) modelling can improve the revision properties of the seasonally adjusted and trend estimates. ARIMA modelling relies on the characteristics of the series being analysed to project future period data. The projected values are temporary, intermediate values, that are only used internally to improve the estimation of the seasonal factors. The projected data do not affect the original estimates and are discarded at the end of the seasonal adjustment process. From the December quarter 2012, the Consumer Price Index uses ARIMA modelling where appropriate for individual time series. The ARIMA model is assessed as part of the annual reanalysis. For more information on ARIMA modelling see Feature article: Use of ARIMA modelling to reduce revisions in the October 2004 issue of *Australian Economic Indicators* (cat. no. 1350.0).

17 The ABS applies seasonal adjustment to the expenditure class components of the CPI which are found to be seasonal, and then aggregates the seasonally adjusted and non-seasonally adjusted components to calculate the All groups CPI, seasonally adjusted, Trimmed mean and Weighted median estimates. The seasonally adjusted expenditure class components are available in Table 15 – CPI expenditure class, seasonally adjusted index numbers, weighted average of eight capital cities. The seasonal factors used to derive these seasonally adjusted indexes are available in Table 16 – CPI expenditure class, combined seasonal adjustment factors, weighted average of eight capital cities. For more information about seasonal adjustment of the CPI please refer to *Information Paper: Seasonal Adjustment of Consumer Price Indexes, 2011* (cat. no. 6401.0.55.003).

INTERNATIONAL COMPARISONS

18 In analysing price movements in Australia, an important consideration is Australia's performance relative to other countries. However, a simple comparison of All groups (or headline) CPIs is often inappropriate because of the different measurement approaches used by countries for certain products, particularly housing and financial and insurance services. To provide a better basis for international comparisons, the 17th International Conference of Labour Statisticians adopted a resolution which called for countries to 'if possible, compile and provide for dissemination to the international community an index that excludes housing and financial services' in addition to the all-items index.

19 Table 9 presents indexes for selected countries on a basis consistent with the above resolution and comparable to the Australian series 'All groups excluding Housing and Insurance and financial services' (see paragraph 11). However, other than Australia and New Zealand, the countries represented in this table are yet to develop indexes on this basis, so the indexes presented here are consistent with the series previously published for All groups excluding Housing. To facilitate comparisons, all indexes in this table have been converted, where necessary, to a quarterly basis and re-referenced to an index reference period of 2011–12 = 100.0. Index numbers and percentage changes are always published to one decimal place, and the percentage changes are calculated from the rounded index numbers. Index numbers for periods longer than a single quarter (e.g. for financial years) are calculated as the simple arithmetic average of the rounded quarterly index numbers.

20 In producing Table 9, the ABS is grateful for the assistance of the relevant national statistical agencies which have either directly supplied indexes for all items excluding housing and insurance and financial services or data to enable their derivation.

EXPLANATORY NOTES *continued*

REVISIONS

21 CPI original indexes are revised only in exceptional circumstances, such as to correct a significant error. As is the case with all price indexes, the index reference period (i.e. the period in which the index is set equal to 100.0) will be changed periodically. The index number levels for all periods will be changed by this process and it may also result in differences, due to rounding, between the percentage changes published on the old base and those on the new base. Seasonally adjusted indexes (including the Trimmed mean and Weighted median) for some quarters will be revised as extra quarters are included in the series analysed for seasonal influences (see paragraphs 14 to 17).

RELATED PUBLICATIONS

22 Current publications and other products released by the ABS are listed on the ABS website <<http://www.abs.gov.au>>. The ABS also issues a daily *Release Advice* on the website which details products to be released in the week ahead.

23 Users may also wish to refer to the following publications and other data products that are available free of charge from the ABS website:

- *A Guide to the Consumer Price Index, 16th Series* (cat. no. 6440.0)
- *Consumer Price Index: Concepts, Sources and Methods, 2011* (cat. no. 6461.0)
- *Information Paper: Introduction of the 16th Series Australian Consumer Price Index, 2011* (cat. no. 6470.0)
- *Information Paper: Outcome of the 16th Series Australian Consumer Price Index Review, Australia* (cat. no. 6469.0)
- *Consumer Price Index Commodity Classification, Australia, 16th Series, 2011* (cat. no. 6401.0.55.004)
- *Consumer Price Index: 16th Series Weighting Pattern* (cat. no. 6471.0)
- *Consumer Price Index: Historical Weighting Patterns (1948–2011)* (cat. no. 6431.0)
- *Analytical Living Cost Indexes and Pensioner and Beneficiary Living Cost Index: 16th Series Weighting Patterns* (cat. no. 6472.0)
- *Consumer Price Index: Concordance with Household Expenditure Classification, Australia* (cat. no. 6446.0.55.001)
- *Information Paper: Seasonal Adjustment of Consumer Price Indexes, 2011* (cat. no. 6401.0.55.003)
- *Information Paper: Experimental Price Indexes for Financial Services* (cat. no. 6413.0)
- *Information Paper: The Introduction of Hedonic Price Indexes for Personal Computers* (cat. no. 6458.0)
- *Analytical Living Cost Indexes for Selected Australian Household Types* (cat. no. 6463.0)
- *Pensioner and Beneficiary Living Cost Index* (cat. no. 6467.0)
- *House Price Indexes: Eight Capital Cities* (cat. no. 6416.0)
- *Producer Price Indexes, Australia* (cat. no. 6427.0)
- *International Trade Price Indexes, Australia* (cat. no. 6457.0)
- *Labour Price Index, Australia* (cat. no. 6345.0)

DATA AVAILABLE

24 As well as the statistics included in this publication, there is more detailed data for each capital city available on the ABS website. Inquiries should be made to the National Information and Referral Service on 1300 135 070.

APPENDIX SEASONAL ADJUSTMENT OF THE CPI

INTRODUCTION

1 Seasonally adjusted estimates are derived by estimating and removing systematic calendar related effects from the original series. In most economic data these calendar related effects are a combination of the classical seasonal influences (e.g. the effect of the weather, social traditions or administrative practices such as government charges increasing on 1 July each year) plus other kinds of calendar related variations, such as Easter or the proximity of significant days in the year (e.g. Christmas). In the seasonal adjustment process, both seasonal and other calendar related factors evolve over time to reflect changes in activity patterns. The seasonally adjusted estimates reflect the sampling and non-sampling errors to which the original estimates are subject.

2 The CPI uses a concurrent seasonal adjustment methodology to derive the adjustment factors. This method uses the original time series available at each reference period to estimate seasonal factors for the current and previous quarters. Concurrent seasonal adjustment is technically superior to the more traditional method of reanalysing seasonal patterns once each year because it uses all available data to fine tune the estimates of the seasonal component each quarter. With concurrent analysis, the seasonally adjusted series are subject to revision each quarter as the estimates of the seasonal factors are improved. In most instances, the only significant revisions will be to the combined adjustment factors for the previous quarter and for the same quarter in the preceding year as the reference quarter (i.e. if the latest quarter is September quarter 2011 then the most significant revisions will be to June quarter 2011 and September quarter 2010). The seasonal patterns are also reanalysed on an annual basis or when there are known changes to regular events. This can lead to additional revisions.

3 Autoregressive integrated moving average (ARIMA) modelling can improve the revision properties of the seasonally adjusted and trend estimates. ARIMA modelling relies on the characteristics of the series being analysed to project future period data. The projected values are temporary, intermediate values, that are only used internally to improve the estimation of the seasonal factors. The projected data do not affect the original estimates and are discarded at the end of the seasonal adjustment process. From the December quarter 2012, the Consumer Price Index uses ARIMA modelling where appropriate for individual time series. The ARIMA model is assessed as part of the annual re-analysis. For more information on ARIMA modelling see Feature article: Use of ARIMA modelling to reduce revisions in the October 2004 issue of *Australian Economic Indicators* (cat. no. 1350.0).

4 The ABS applies seasonal adjustment to the expenditure class components of the CPI which are found to be seasonal, and then aggregates the seasonally adjusted and non-seasonally adjusted components to calculate the All groups CPI, seasonally adjusted, Trimmed mean and Weighted median estimates. The seasonally adjusted expenditure class components are available in Table 15 – CPI expenditure class, seasonally adjusted index numbers, weighted average of eight capital cities. The seasonal factors used to derive these seasonally adjusted indexes are available in Table 16 – CPI expenditure class, combined seasonal adjustment factors, weighted average of eight capital cities.

APPENDIX SEASONAL ADJUSTMENT OF THE CPI *continued*

SEASONALITY OF CPI EXPENDITURE CLASSES

5 The Annual Seasonal Re-analysis (ASR) uses a range of statistical tests to determine if seasonality was present in each expenditure class price index. This approach identifies series that show seasonal patterns over any part of the series. Using the ABS seasonal adjustment methodology, 62 of the 87 expenditure class price indexes were originally deemed to have a seasonal pattern in the 16th series review.

6 Following the 2012 ASR, 58 expenditure classes are considered seasonal and will be seasonally adjusted for the Analytical series; 'All Groups CPI, seasonally adjusted' and 'Underlying trend series – Trimmed mean and Weighted median'. Seasonally adjusted index numbers can be found in 'TABLE 15. CPI: Expenditure Class Index Numbers, Seasonally adjusted, Weighted Average of Eight Capital Cities' and combined seasonal adjustment factors can be found in 'TABLE 16. CPI: Expenditure Class, Combined seasonal adjustment factors, Weighted Average of Eight Capital Cities'. These tables can be downloaded from the 'Downloads' tab of this issue on the ABS website <<http://www.abs.gov.au>>.

7 For more details on the seasonal adjustment of the CPI please refer to *Information Paper: Seasonal Adjustment of Consumer Price Indexes, 2011* (cat. no. 6401.0.55.003).

TABLE 1 – SEASONAL ADJUSTMENT OF CPI EXPENDITURE CLASSES

<i>CPI expenditure classes</i>	<i>Seasonally adjusted prior to 2012 Annual Seasonal Reanalysis (ASR)</i>	<i>Seasonally adjusted following 2012 ASR</i>
Bread	n	n
Cakes and biscuits	y	y
Breakfast cereals	y	y
Other cereal products	y	y
Beef and veal	y	y
Pork	y	y
Lamb and goat	y	y
Poultry	y	(a)n
Other meats	y	y
Fish and other seafood	y	y
Milk	y	(a)n
Cheese	n	n
Ice cream and other dairy products	y	y
Fruit	y	y
Vegetables	y	y
Eggs	n	n
Jams, honey and spreads	n	n
Food additives and condiments	y	y
Oils and fats	n	n
Snacks and confectionery	y	y
Other food products n.e.c.	y	y
Coffee, tea and cocoa	n	n
Waters, soft drinks and juices	y	y
Restaurant meals	n	n
Take away and fast foods	y	y

(a) See paragraph 8 for dates from when seasonal adjustment ceased.

APPENDIX SEASONAL ADJUSTMENT OF THE CPI *continued*

TABLE 1 – SEASONAL ADJUSTMENT OF CPI EXPENDITURE CLASSES *continued*

<i>CPI expenditure classes</i>	<i>Seasonally adjusted prior to 2012 Annual Seasonal Reanalysis (ASR)</i>	<i>Seasonally adjusted following 2012 ASR</i>
Spirits	n	n
Wine	y	(a)n
Beer	n	n
Tobacco	y	y
Garments for men	y	y
Garments for women	y	y
Garments for infants and children	y	y
Footwear for men	y	(a)n
Footwear for women	y	y
Footwear for infants and children	y	y
Accessories	y	y
Cleaning, repair and hire of clothing and footwear	n	n
Rents	y	y
New dwelling purchase by owner-occupiers	n	n
Maintenance and repair of the dwelling	y	y
Property rates and charges	y	y
Water and sewerage	y	y
Electricity	y	y
Gas and other household fuels	y	y
Furniture	y	y
Carpets and other floor coverings	y	y
Household textiles	y	y
Major household appliances	n	n
Small electric household appliances	y	y
Glassware, tableware and household utensils	y	y
Tools and equipment for house and garden	y	y
Cleaning and maintenance products	y	y
Personal care products	y	y
Other non-durable household products	y	y
Child care	y	y
Hairdressing and personal grooming services	n	n
Other household services	n	n
Pharmaceutical products	y	y
Therapeutic appliances and equipment	n	n
Medical and hospital services	y	y
Dental services	y	y
Motor vehicles	n	n
Spare parts and accessories for motor vehicles	n	n
Automotive fuel	y	y
Maintenance and repair of motor vehicles	n	n
Other services in respect of motor vehicles	y	y
Urban transport fares	y	y
Postal services	n	n
Telecommunication equipment and services	n	n
Audio, visual and computing equipment	n	n
Audio, visual and computing media and services	n	n
Books	y	y
Newspapers, magazines and stationery	y	y
Domestic holiday travel and accommodation	y	y
International holiday travel and accommodation	y	y
Equipment for sports, camping and open-air recreation	n	n
Games, toys and hobbies	y	y
Pets and related products	y	y
Veterinary and other services for pets	y	y
Sports participation	y	y
Other recreational, sporting and cultural services	y	y
Preschool and primary education	y	y
Secondary education	y	y
Tertiary education	y	y
Insurance	y	y
Deposit and loan facilities (direct charges)	n	n
Other financial services	n	n

(a) See paragraph 8 for dates from when seasonal adjustment ceased.

APPENDIX SEASONAL ADJUSTMENT OF THE CPI *continued*

SEASONALITY OF CPI
EXPENDITURE CLASSES
continued

8 The following series have ceased being seasonally adjusted, with no clear identifiable seasonal pattern in recent years:

- Footwear for men from the March quarter 2007;
- Milk from the March quarter 2010;
- Poultry from the June quarter 2009; and
- Wine from the March quarter 2009.

9 The following series have had adjustments introduced due to changes in trend:

- Electricity from the September quarter 2012;
- Gas and other household fuels from the September quarter 2012;
- Maintenance and repair of motor vehicles from the June quarter 2012;
- Medical and hospital services from the September quarter 2012; and
- Water and sewerage from the September quarter 2012.

10 The following series has had adjustments introduced due to changes in seasonal pattern:

- Water and sewerage from the September quarter 2011.

11 Changes to the seasonally adjusted series do not affect the original CPI index series.

FOR MORE INFORMATION . . .

INTERNET **www.abs.gov.au** the ABS website is the best place for data from our publications and information about the ABS.

INFORMATION AND REFERRAL SERVICE

Our consultants can help you access the full range of information published by the ABS that is available free of charge from our website. Information tailored to your needs can also be requested as a 'user pays' service. Specialists are on hand to help you with analytical or methodological advice.

PHONE 1300 135 070

EMAIL client.services@abs.gov.au

FAX 1300 135 211

POST Client Services, ABS, GPO Box 796, Sydney NSW 2001

FREE ACCESS TO STATISTICS

All statistics on the ABS website can be downloaded free of charge.

WEB ADDRESS www.abs.gov.au